


### Anti-LAMP2B antibody - Lysosome Marker ab18529

★★★★☆ **4 Abreviews**   **26 References**   画像数 1

#### 製品の概要

製品名	Anti-LAMP2B antibody - Lysosome Marker
製品の詳細	Rabbit polyclonal to LAMP2B - Lysosome Marker
由来種	Rabbit
特異性	This product has low sequence homology with Mouse LAMP2B (67%), and high sequence homology with Mouse LAMP2C (91.7%).
アプリケーション	<b>適用あり:</b> WB
種交差性	<b>交差種:</b> Human <b>交差が予測される動物種:</b> Cow 
免疫原	Synthetic peptide corresponding to Human LAMP2B aa 350 to the C-terminus (C terminal) conjugated to keyhole limpet haemocyanin. LAMP2 has 3 distinct isoforms, LAMP2A, 2B & 2C which are expressed in different tissues and differ in sequence at the extreme C-terminus. Database link: <b>P13473</b> (Peptide available as <b>ab23321</b> )
ポジティブ・コントロール	This antibody gave a positive signal in the following whole cell lysates: HeLa, HEK293. This antibody gave a positive signal in the following Methanol fixed cell lines: HeLa. It also gave a positive signal in Human skin tissue sections.
特記事項	<p>The Life Science industry has been in the grips of a reproducibility crisis for a number of years. Abcam is leading the way in addressing this with our range of recombinant monoclonal antibodies and knockout edited cell lines for gold-standard validation. Please check that this product meets your needs before purchasing.</p> <p>If you have any questions, special requirements or concerns, please send us an inquiry and/or contact our Support team ahead of purchase. Recommended alternatives for this product can be found below, along with publications, customer reviews and Q&amp;As</p>

#### 製品の特性

製品の状態	Liquid
保存方法	Shipped at 4°C. Store at +4°C short term (1-2 weeks). Upon delivery aliquot. Store at -20°C or -80°C. Avoid freeze / thaw cycle.
バッファー	pH: 7.40 Preservative: 0.02% Sodium azide

Constituent: PBS

Batches of this product that have a concentration < 1mg/ml may have BSA added as a stabilising agent. If you would like information about the formulation of a specific lot, please contact our scientific support team who will be happy to help.

精製度 Immunogen affinity purified  
ポリモノ ポリクローナル  
アイソタイプ IgG

## アプリケーション

**The Abpromise guarantee** Abpromise保証は、次のテスト済みアプリケーションにおけるab18529の使用に適用されます  
アプリケーションノートには、推奨の開始希釈率がありますが、適切な希釈率につきましてはご検討ください。

アプリケーション	Abreviews	特記事項
WB	★★★★★ (2)	Use a concentration of 1 µg/ml. Detects a band of approximately 110 kDa (predicted molecular weight: 110 kDa).

## ターゲット情報

**機能** Implicated in tumor cell metastasis. May function in protection of the lysosomal membrane from autodigestion, maintenance of the acidic environment of the lysosome, adhesion when expressed on the cell surface (plasma membrane), and inter- and intracellular signal transduction. Protects cells from the toxic effects of methylating mutagens.

**組織特異性** Isoform LAMP-2A is highly expressed in placenta, lung and liver, less in kidney and pancreas, low in brain and skeletal muscle. Isoform LAMP-2B is highly expressed in skeletal muscle, less in brain, placenta, lung, kidney and pancreas, very low in liver.

**関連疾患** Danon disease

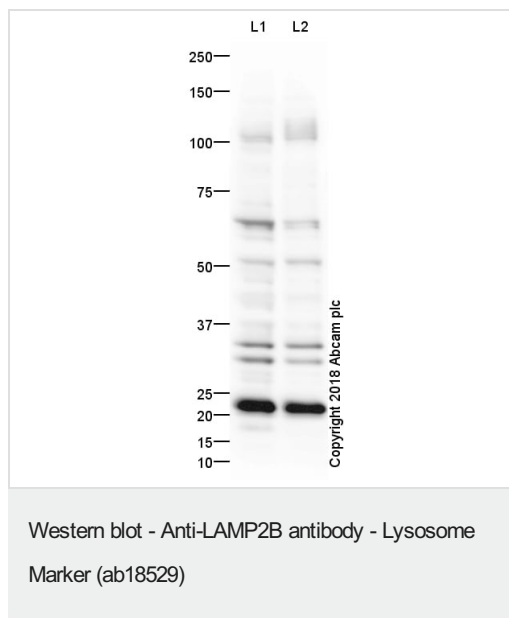
**配列類似性** Belongs to the LAMP family.

**翻訳後修飾** O- and N-glycosylated; some of the 16 N-linked glycans are polylactosaminoglycans.

**細胞内局在** Cell membrane. Endosome membrane. Lysosome membrane. This protein shuttles between lysosomes, endosomes, and the plasma membrane.

**製品の状態** Alternative splicing produces 3 isoforms.

## 画像



**All lanes :** Anti-LAMP2B antibody - Lysosome Marker (ab18529) at 1 µg/ml

**Lane 1 :** HeLa (Human epithelial carcinoma cell line) Whole Cell Lysate

**Lane 2 :** HEK293 (Human) Whole Cell Lysate

Lysates/proteins at 20 µg per lane.

### Secondary

**All lanes :** Goat Anti-Rabbit IgG H&L (HRP) preadsorbed at 1/50000 dilution

Developed using the ECL technique.

Performed under reducing conditions.

**Predicted band size:** 110 kDa

**Observed band size:** 110 kDa

**Additional bands at:** 22 kDa (possible non-specific binding), 33 kDa (possible non-specific binding), 34 kDa (possible non-specific binding), 65 kDa (possible non-specific binding)

**Exposure time:** 4 minutes

This blot was produced using a 4-12% Bis-tris gel under the MOPS buffer system. The gel was run at 200V for 50 minutes before being transferred onto a Nitrocellulose membrane at 30V for 70 minutes. The blot was incubated with ab18529 overnight at 4°C. Antibody binding was detected using an anti-rabbit antibody conjugated to HRP, and visualised using ECL development solution [ab133406](#).

LAMP2B undergoes extensive glycosylation so ab18529 detects a band of 110 kDa by Western blot.

### **Our Abpromise to you: Quality guaranteed and expert technical support**

---

- Replacement or refund for products not performing as stated on the datasheet
- Valid for 12 months from date of delivery
- Response to your inquiry within 24 hours
  
- We provide support in Chinese, English, French, German, Japanese and Spanish
- Extensive multi-media technical resources to help you
- We investigate all quality concerns to ensure our products perform to the highest standards

If the product does not perform as described on this datasheet, we will offer a refund or replacement. For full details of the Abpromise, please visit <https://www.abcam.co.jp/abpromise> or contact our technical team.

### **Terms and conditions**

---

- Guarantee only valid for products bought direct from Abcam or one of our authorized distributors