

Anti-LAMP1 antibody [EPR21026] ab208943

リコンビナント **RabMAb**

★★★★★ **2 Abreviews** **21 References** 画像数 10

製品の概要

製品名	Anti-LAMP1 antibody [EPR21026]
製品の詳細	Rabbit monoclonal [EPR21026] to LAMP1
由来種	Rabbit
特異性	In our lab we observe staining in multiple tissues (spleen, lung, kidney etc.) in IHC-P with ab208943, but a lack of staining on mouse brain. We have received feedback from other researchers, that they also do not see staining in mouse brain with this antibody. Therefore we do not recommend using this reagent, for work on mouse brain, in IHC-P. For further information on this please contact our Technical Support team who will be happy to help.
アプリケーション	適用あり: WB, IHC-P, IHC-Fr, IP, ICC/IF, Flow Cyt (Intra)
種交差性	交差種: Mouse
免疫原	Recombinant fragment. This information is proprietary to Abcam and/or its suppliers.
ポジティブ・コントロール	WB: Mouse lung, colon, kidney and liver lysates; Neuro-2a, RAW 264.7 and NIH/3T3 whole cell lysates. IHC-P: Mouse spleen and lung tissues. IHC-Fr: Mouse kidney tissue. ICC/IF: NIH/3T3 and Neuro-2a cells. Flow Cyt (intra): Neuro-2a cells. IP: NIH/3T3 whole cell lysate.
特記事項	<p>This product is a recombinant monoclonal antibody, which offers several advantages including:</p> <ul style="list-style-type: none"> - High batch-to-batch consistency and reproducibility - Improved sensitivity and specificity - Long-term security of supply - Animal-free production <p>For more information see here.</p> <p>Our RabMAb[®] technology is a patented hybridoma-based technology for making rabbit monoclonal antibodies. For details on our patents, please refer to RabMAb[®] patents.</p>

製品の特性

製品の状態	Liquid
保存方法	Shipped at 4°C. Store at +4°C short term (1-2 weeks). Upon delivery aliquot. Store at -20°C long term. Avoid freeze / thaw cycle.
バッファー	pH: 7.2 Preservative: 0.01% Sodium azide

	Constituents: 0.05% BSA, 40% Glycerol, PBS
精製度	Protein A purified
ポリ/モノ	モノクローナル
クローン名	EPR21026
アイソタイプ	IgG

アプリケーション

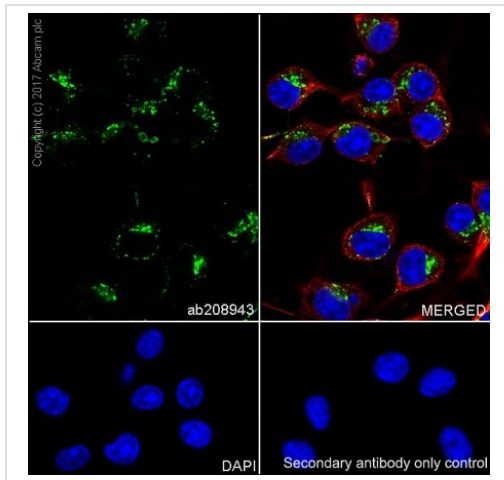
The Abpromise guarantee **Abpromise保証は、次のテスト済みアプリケーションにおけるab208943の使用に適用されます**
アプリケーションノートには、推奨の開始希釈率がありますが、適切な希釈率につきましてはご検討ください。

アプリケーション	Abreviews	特記事項
WB		1/1000. Detects a band of approximately 90-120 kDa (predicted molecular weight: 43 kDa).
IHC-P	★★★★☆ (1)	1/500. Perform heat mediated antigen retrieval with Tris/EDTA buffer pH 9.0 before commencing with IHC staining protocol. Works well in IHC-P on multiple tissues, but does not work on mouse brain, in this application.
IHC-Fr		1/100. Perform heat mediated antigen retrieval using sodium citrate buffer (pH 6.0).
IP		1/30.
ICC/IF	★★★★★ (1)	1/100.
Flow Cyt (Intra)		1/500.

ターゲット情報

機能	Presents carbohydrate ligands to selectins. Also implicated in tumor cell metastasis.
配列類似性	Belongs to the LAMP family.
翻訳後修飾	O- and N-glycosylated; some of the 18 N-linked glycans are polylactosaminoglycans.
細胞内局在	Cell membrane. Endosome membrane. Lysosome membrane. This protein shuttles between lysosomes, endosomes, and the plasma membrane.

画像

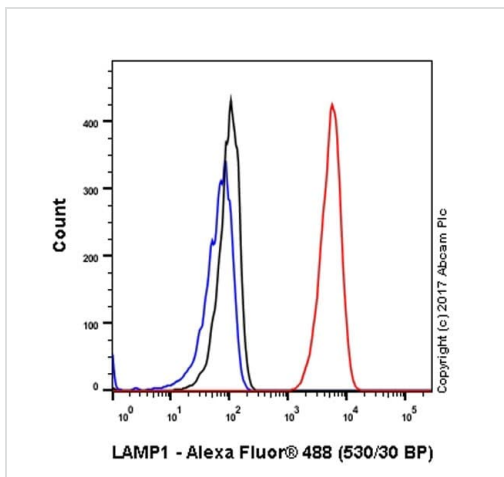


Immunocytochemistry/ Immunofluorescence - Anti-LAMP1 antibody [EPR21026] (ab208943)

Immunofluorescent analysis of 100% methanol-fixed Neuro-2a (mouse neuroblastoma cell line) cells labeling LAMP1 with ab208943 at 1/100 dilution, followed by Goat Anti-Rabbit IgG H&L (Alexa Fluor® 488) ([ab150077](#)) at 1/1000 dilution (green). Confocal image showing cytoplasmic staining on Neuro-2a cell line.

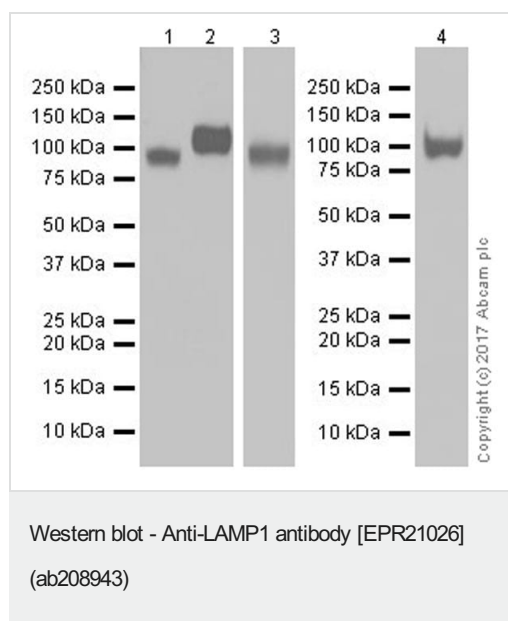
The nuclear counter stain is DAPI (blue). Tubulin is detected with Anti-alpha Tubulin antibody [DM1A] - Microtubule Marker (Alexa Fluor® 594) ([ab195889](#)), at 1/200 dilution (red).

Secondary antibody only control: Used PBS instead of primary antibody, secondary antibody is Goat Anti-Rabbit IgG H&L (Alexa Fluor® 488) ([ab150077](#)) secondary antibody at 1/1000 dilution.



Flow Cytometry (Intracellular) - Anti-LAMP1 antibody [EPR21026] (ab208943)

Intracellular flow cytometric analysis of 4% paraformaldehyde-fixed, 90% methanol-permeabilized Neuro-2a (mouse neuroblastoma cell line) cell line labeling LAMP1 with ab208943 at 1/500 dilution (red) compared with a Rabbit IgG, monoclonal [EPR25A] - Isotype Control ([ab172730](#)) (black) and an unlabeled control (cells without incubation with primary antibody and secondary antibody) (blue). Goat Anti-Rabbit IgG H&L (Alexa Fluor® 488) ([ab150077](#)), at 1/2000 dilution was used as the secondary antibody.



All lanes : Anti-LAMP1 antibody [EPR21026] (ab208943) at 1/2000 dilution

Lane 1 : Neuro-2a (mouse neuroblastoma cell line) whole cell lysate at 20 µg

Lane 2 : RAW 264.7 (mouse macrophage cell line transformed with Abelson murine leukemia virus) whole cell lysate at 20 µg

Lane 3 : Mouse kidney lysate at 20 µg

Lane 4 : NIH/3T3 (mouse embryo fibroblast cell line) whole cell lysate at 10 µg

Secondary

All lanes : Goat Anti-Rabbit IgG H&L (HRP) ([ab97051](#)) at 1/100000 dilution

Developed using the ECL technique.

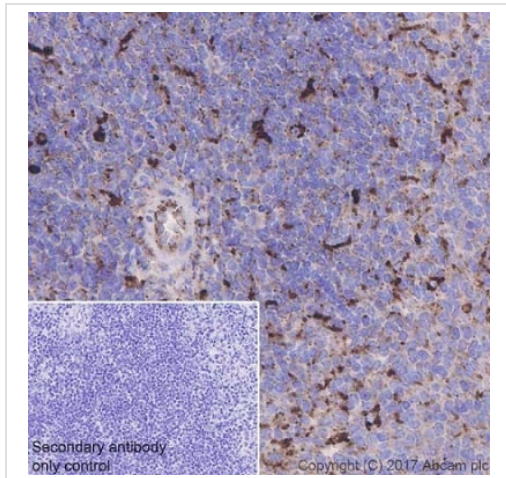
Predicted band size: 43 kDa

Observed band size: 90-120 kDa

Exposure time : Lanes 1-2: 3 minutes; Lane 3: 5 seconds; Lane 4: 10 seconds.

Blocking and dilution buffer: 5% NFDM/TBST.

The varying band sizes are due to different levels of glycosylation (PMID: 10212251, PMID: 26246576).



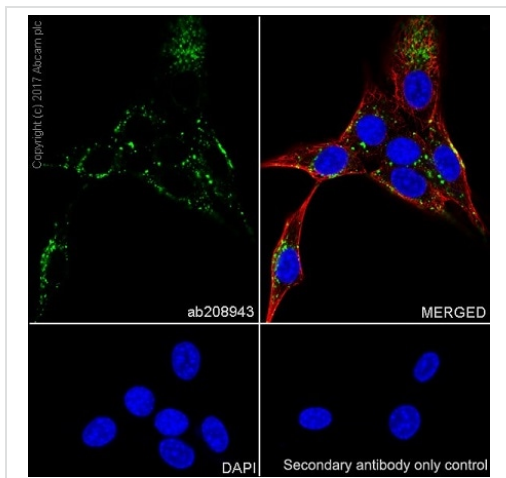
Immunohistochemistry (Formalin/PFA-fixed paraffin-embedded sections) - Anti-LAMP1 antibody [EPR21026] (ab208943)

Immunohistochemical analysis of paraffin-embedded mouse spleen tissue labeling LAMP1 with ab208943 at 1/500 dilution, followed by Goat Anti-Rabbit IgG H&L (HRP) Ready to use. Granular cytoplasmic staining on mouse spleen was observed, performed on a Leica Biosystems BOND® RX instrument (PMID: 22008915). Counter stained with hematoxylin.

Secondary antibody only control: Used PBS instead of primary antibody, secondary antibody is Goat Anti-Rabbit IgG H&L (HRP) Ready to use.

Note: BOND® is a registered trademark of Leica Biosystems Melbourne Pty Ltd.

Perform heat mediated antigen retrieval with Tris/EDTA buffer pH 9.0 before commencing with IHC staining protocol.

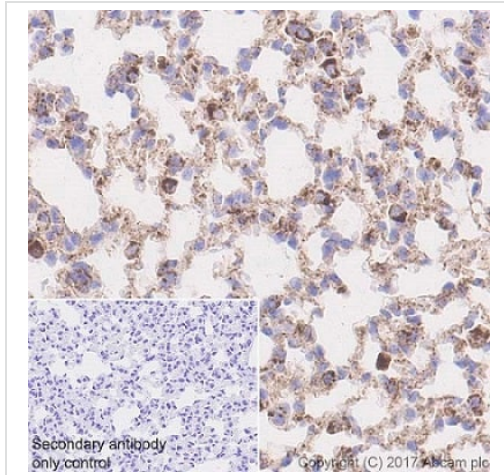


Immunohistochemistry (Formalin/PFA-fixed paraffin-embedded sections) - Anti-LAMP1 antibody [EPR21026] (ab208943)

Immunofluorescent analysis of 100% methanol-fixed NIH/3T3 (mouse embryo fibroblast cell line) cells labeling LAMP1 with ab208943 at 1/100 dilution, followed by Goat Anti-Rabbit IgG H&L (Alexa Fluor® 488) (**ab150077**) at 1/1000 dilution (green). Confocal image showing cytoplasmic staining on NIH/3T3 cell line.

The nuclear counter stain is DAPI (blue). Tubulin is detected with Anti-alpha Tubulin antibody [DM1A] - Microtubule Marker (Alexa Fluor® 594) (**ab195889**), at 1/200 dilution (red).

Secondary antibody only control: Used PBS instead of primary antibody, secondary antibody is Goat Anti-Rabbit IgG H&L (Alexa Fluor® 488) (**ab150077**) secondary antibody at 1/1000 dilution. Perform heat mediated antigen retrieval with Tris/EDTA buffer pH 9.0 before commencing with IHC staining protocol.



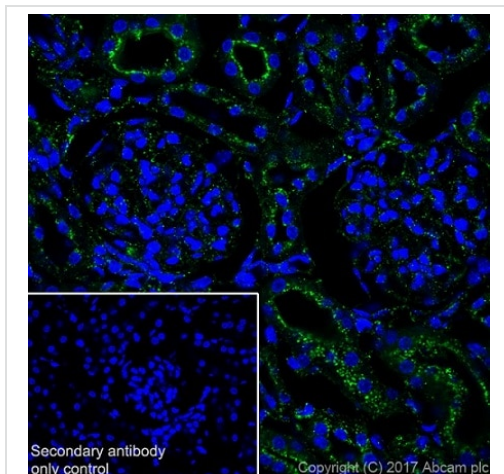
Immunohistochemistry (Formalin/PFA-fixed paraffin-embedded sections) - Anti-LAMP1 antibody [EPR21026] (ab208943)

Immunohistochemical analysis of paraffin-embedded mouse lung tissue labeling LAMP1 with ab208943 at 1/500 dilution, followed by Goat Anti-Rabbit IgG H&L (HRP) Ready to use. Granular cytoplasmic staining on mouse spleen was observed, performed on a Leica Biosystems BOND® RX instrument (PMID: 22008915). Counter stained with hematoxylin.

Secondary antibody only control: Used PBS instead of primary antibody, secondary antibody is Goat Anti-Rabbit IgG H&L (HRP) Ready to use.

Note: BOND® is a registered trademark of Leica Biosystems Melbourne Pty Ltd.

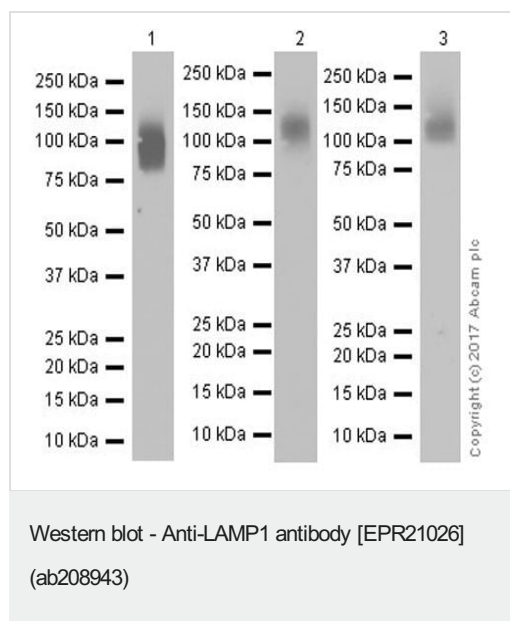
Perform heat mediated antigen retrieval with Tris/EDTA buffer pH 9.0 before commencing with IHC staining protocol.



Immunohistochemistry (Frozen sections) - Anti-LAMP1 antibody [EPR21026] (ab208943)

Immunohistochemical analysis of 4% PFA-fixed, 0.2% Triton X-100 permeabilized mouse kidney tissue labeling LAMP1 with ab208943 at 1/100 dilution, followed by Goat Anti-Rabbit IgG H&L (Alexa Fluor® 488) ([ab150077](#)) at 1/1000 dilution (green). Cytoplasmic staining in the endothelial cells of glomeruli and epithelial cells of renal tubules (PMID: 23229015; PMID:23635510). The nuclear counter stain is DAPI (blue).

Secondary antibody only control: Used PBS instead of primary antibody, secondary antibody is Goat Anti-Rabbit IgG H&L (Alexa Fluor® 488) ([ab150077](#)) at 1/1000 dilution.



All lanes : Anti-LAMP1 antibody [EPR21026] (ab208943) at 1/1000 dilution

Lane 1 : Mouse lung lysate

Lane 2 : Mouse colon lysate

Lane 3 : Mouse liver lysate

Lysates/proteins at 10 µg per lane.

Secondary

All lanes : Goat Anti-Rabbit IgG H&L (HRP) ([ab97051](#)) at 1/50000 dilution

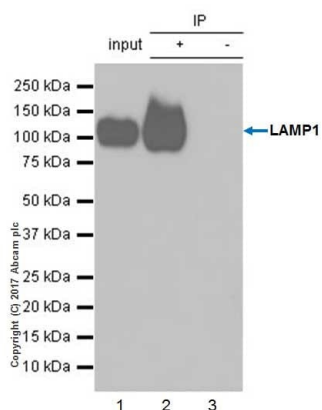
Developed using the ECL technique.

Predicted band size: 43 kDa

Observed band size: 90-120 kDa

Exposure time : Lanes 1-2: 15 seconds; Lane 3: 5 seconds.

Blocking and dilution buffer: 5% NFDM/TBST.



Immunoprecipitation - Anti-LAMP1 antibody
[EPR21026] (ab208943)

LAMP1 was immunoprecipitated from 0.35 mg of NIH/3T3 (mouse embryo fibroblast cell line) whole cell lysate with ab208943 at 1/30 dilution. Western blot was performed from the immunoprecipitate using ab208943 at 1/1000 dilution. VeriBlot for IP Detection Reagent (HRP) (**ab131366**), was used for detection at 1/10000 dilution.

Lane 1: NIH/3T3 whole cell lysate 10 µg (Input).

Lane 2: ab208943 IP in NIH/3T3 whole cell lysate.

Lane 3: Rabbit monoclonal IgG (**ab172730**) instead of ab208943 in NIH/3T3 whole cell lysate.

Blocking and dilution buffer and concentration: 5% NFDm/TBST.

Exposure time: 1 second.

Why choose a recombinant antibody?



Research with confidence
Consistent and reproducible results



Long-term and scalable supply
Recombinant technology



Success from the first experiment
Confirmed specificity



Ethical standards compliant
Animal-free production

Anti-LAMP1 antibody [EPR21026] (ab208943)

Please note: All products are "FOR RESEARCH USE ONLY. NOT FOR USE IN DIAGNOSTIC PROCEDURES"

Our Abpromise to you: Quality guaranteed and expert technical support

- Replacement or refund for products not performing as stated on the datasheet
- Valid for 12 months from date of delivery
- Response to your inquiry within 24 hours
- We provide support in Chinese, English, French, German, Japanese and Spanish
- Extensive multi-media technical resources to help you
- We investigate all quality concerns to ensure our products perform to the highest standards

If the product does not perform as described on this datasheet, we will offer a refund or replacement. For full details of the Abpromise, please visit <https://www.abcam.co.jp/abpromise> or contact our technical team.

Terms and conditions

- Guarantee only valid for products bought direct from Abcam or one of our authorized distributors