

Anti-Laminin gamma 1 antibody [EPR21200] ab233390

リコンビナント RabMAb[®]

画像数 5

製品の概要

製品名	Anti-Laminin gamma 1 antibody [EPR21200]
製品の詳細	Rabbit monoclonal [EPR21200] to Laminin gamma 1
由来種	Rabbit
アプリケーション	適用あり: WB, IHC-P
種交差性	交差種: Human
免疫原	Recombinant fragment. This information is proprietary to Abcam and/or its suppliers.
ポジティブ・コントロール	WB: Human fetal kidney and fetal heart tissue lysate. A431, OVCAR-3, JAR, MCF7 and A549 whole cell lysate. IHC-P: Human skin, meningioma and kidney tissue.
特記事項	<p>This product is a recombinant monoclonal antibody, which offers several advantages including:</p> <ul style="list-style-type: none"> - High batch-to-batch consistency and reproducibility - Improved sensitivity and specificity - Long-term security of supply - Animal-free production <p>For more information see here.</p> <p>Our RabMAb[®] technology is a patented hybridoma-based technology for making rabbit monoclonal antibodies. For details on our patents, please refer to RabMAb[®] patents.</p>

製品の特性

製品の状態	Liquid
保存方法	Shipped at 4°C. Store at +4°C short term (1-2 weeks). Upon delivery aliquot. Store at -20°C long term. Avoid freeze / thaw cycle.
バッファー	<p>pH: 7.2</p> <p>Preservative: 0.01% Sodium azide</p> <p>Constituents: PBS, 40% Glycerol (glycerin, glycerine), 0.05% BSA</p>
精製度	Protein A purified
ポリ/モノ	モノクローナル
クローン名	EPR21200
アイソタイプ	IgG

アプリケーション

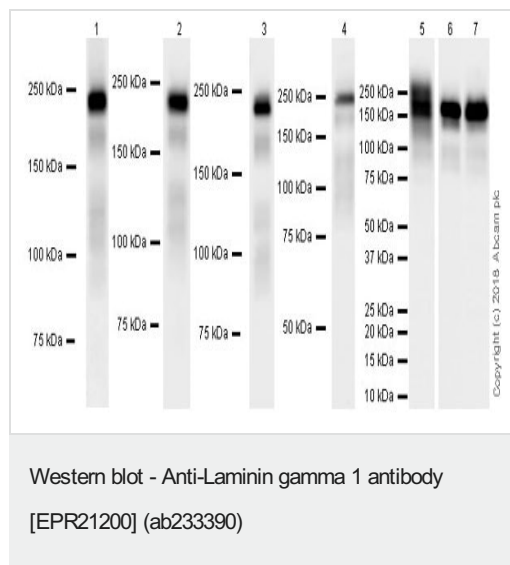
The Abpromise guarantee **Abpromise保証は、** 次のテスト済みアプリケーションにおけるab233390の使用に適用されます
アプリケーションノートには、推奨の開始希釈率がありますが、適切な希釈率につきましてはご検討ください。

アプリケーション	Abreviews	特記事項
WB		1/1000. Predicted molecular weight: 178 kDa.
IHC-P		1/2000. Perform heat mediated antigen retrieval with Tris/EDTA buffer pH 9.0 before commencing with IHC staining protocol.

ターゲット情報

機能	Binding to cells via a high affinity receptor, laminin is thought to mediate the attachment, migration and organization of cells into tissues during embryonic development by interacting with other extracellular matrix components.
組織特異性	Found in the basement membranes (major component).
配列類似性	Contains 11 laminin EGF-like domains. Contains 1 laminin IV type A domain. Contains 1 laminin N-terminal domain.
ドメイン	The alpha-helical domains I and II are thought to interact with other laminin chains to form a coiled coil structure. Domains VI and IV are globular.
細胞内局在	Secreted > extracellular space > extracellular matrix > basement membrane.

画像



All lanes : Anti-Laminin gamma 1 antibody [EPR21200]
(ab233390) at 1/5000 dilution

Lane 1 : Human fetal heart tissue lysate at 10 µg

Lane 2 : Human fetal kidney tissue lysate at 10 µg

Lane 3 : A431 (Human epidermoid carcinoma cell line) whole cell
lysate at 10 µg

Lane 4 : NIH:OVCAR-3 (Human ovary adenocarcinoma cell line)
whole cell lysate at 10 µg

Lane 5 : JAR (human placenta choriocarcinoma cell line) whole cell
lysate at 20 µg

Lane 6 : MCF7 (human breast adenocarcinoma cell line) whole cell
lysate at 20 µg

Lane 7 : A549 (human lung carcinoma cell line) whole cell lysate at
20 µg

Secondary

Lanes 1-4 : VeriBlot for IP Detection Reagent (HRP) ([ab131366](#)) at 1/4000 dilution

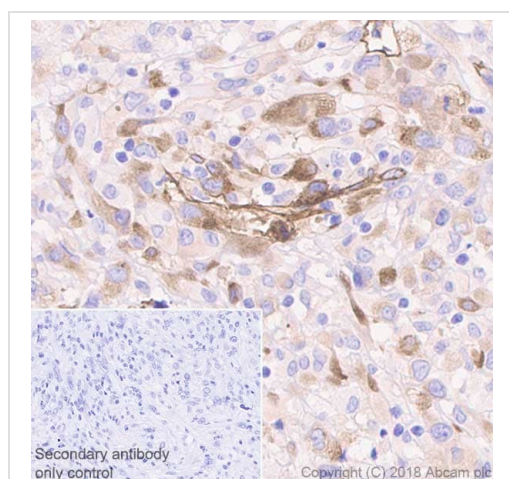
Lanes 5-7 : Goat Anti-Rabbit IgG H&L (HRP) ([ab97051](#)) at 1/100000 dilution

Predicted band size: 178 kDa

Blocking/Dilution buffer: 5% NFDM/TBST.

Exposure times: Lane 1: 10 seconds; Lanes 2-4: 15 seconds; Lane 5: 26 seconds; Lanes 6-7: 6 seconds.

The expression profile observed is consistent with what has been described in the literature (PMID: 18263645, 11067943, 23857767, 28928891).

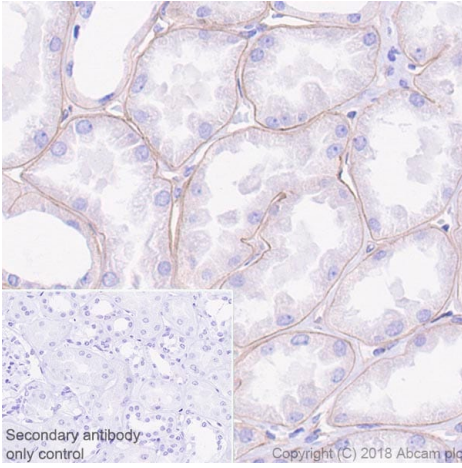


Immunohistochemical analysis of paraffin-embedded human meningioma tissue labeling Laminin gamma 1 with ab233390 at 1/2000 dilution, followed by a ready to use Goat Anti-Rabbit IgG H&L (HRP). Cytoplasmic and membranous staining in human meningioma (PMID: 23053286) is observed. Counter stained with hematoxylin.

Secondary antibody only control: Used PBS instead of primary antibody, secondary antibody is a ready to use Goat Anti-Rabbit IgG H&L (HRP).

Perform heat mediated antigen retrieval using [ab93684](#) (Tris/EDTA buffer, pH 9.0).

Immunohistochemistry (Formalin/PFA-fixed paraffin-embedded sections) - Anti-Laminin gamma 1 antibody [EPR21200] (ab233390)



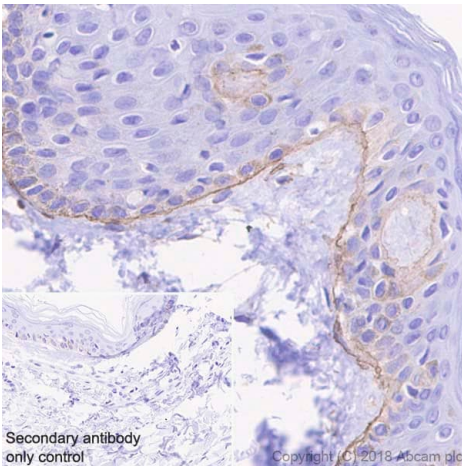
Immunohistochemistry (Formalin/PFA-fixed paraffin-embedded sections) - Anti-Laminin gamma 1 antibody [EPR21200] (ab233390)

Immunohistochemical analysis of paraffin-embedded human kidney tissue labeling Laminin gamma 1 with ab233390 at 1/2000 dilution, followed by a ready to use Goat Anti-Rabbit IgG H&L (HRP).

Positive staining in the basement membrane of human kidney (PMID: 21903675) is observed. Counter stained with hematoxylin.

Secondary antibody only control: Used PBS instead of primary antibody, secondary antibody is a ready to use Goat Anti-Rabbit IgG H&L (HRP).

Perform heat mediated antigen retrieval using [ab93684](#) (Tris/EDTA buffer, pH 9.0).



Immunohistochemistry (Formalin/PFA-fixed paraffin-embedded sections) - Anti-Laminin gamma 1 antibody [EPR21200] (ab233390)

Immunohistochemical analysis of paraffin-embedded human skin tissue labeling Laminin gamma 1 with ab233390 at 1/2000 dilution, followed by a ready to use Goat Anti-Rabbit IgG H&L (HRP).

Positive staining in the basement membrane of human skin (PMID: 15159456) is observed. Counter stained with hematoxylin.

Secondary antibody only control: Used PBS instead of primary antibody, secondary antibody is a ready to use Goat Anti-Rabbit IgG H&L (HRP).

Perform heat mediated antigen retrieval using [ab93684](#) (Tris/EDTA buffer, pH 9.0).

Why choose a recombinant antibody?



Research with confidence
Consistent and reproducible results



Long-term and scalable supply
Recombinant technology



Success from the first experiment
Confirmed specificity



Ethical standards compliant
Animal-free production

Anti-Laminin gamma 1 antibody [EPR21200]
(ab233390)

Please note: All products are "FOR RESEARCH USE ONLY. NOT FOR USE IN DIAGNOSTIC PROCEDURES"

Our Abpromise to you: Quality guaranteed and expert technical support

- Replacement or refund for products not performing as stated on the datasheet
- Valid for 12 months from date of delivery
- Response to your inquiry within 24 hours
- We provide support in Chinese, English, French, German, Japanese and Spanish
- Extensive multi-media technical resources to help you
- We investigate all quality concerns to ensure our products perform to the highest standards

If the product does not perform as described on this datasheet, we will offer a refund or replacement. For full details of the Abpromise, please visit <https://www.abcam.co.jp/abpromise> or contact our technical team.

Terms and conditions

- Guarantee only valid for products bought direct from Abcam or one of our authorized distributors