

Anti-Laminin gamma 1 antibody [EPR21199] ab233389

リコンビナント RabMAb

★★★★☆ **1 Abreviews** **4 References** **画像数 8**

製品の概要

製品名	Anti-Laminin gamma 1 antibody [EPR21199]
製品の詳細	Rabbit monoclonal [EPR21199] to Laminin gamma 1
由来種	Rabbit
アプリケーション	適用あり: WB, IHC-P, IP, Flow Cyt (Intra)
種交差性	交差種: Mouse, Rat, Human
免疫原	Recombinant fragment. This information is proprietary to Abcam and/or its suppliers.
ポジティブ・コントロール	WB: A431, NIH:OVCAR-3, HeLa, MCF7, C6, PC-12 and A549 whole cell lysates; Human fetal heart and fetal kidney tissue lysates; rat kidney, brain and spleen tissue lysates; mouse brain tissue lysate. IP: A431 whole cell lysate. IHC-P: Human pancreas tissue; mouse kidney tissue; rat stomach tissue. Flow Cyt (intra): A431 cells.
特記事項	<p>This product is a recombinant monoclonal antibody, which offers several advantages including:</p> <ul style="list-style-type: none">- High batch-to-batch consistency and reproducibility- Improved sensitivity and specificity- Long-term security of supply- Animal-free production <p>For more information see here.</p> <p>Our RabMAb[®] technology is a patented hybridoma-based technology for making rabbit monoclonal antibodies. For details on our patents, please refer to RabMAb[®] patents.</p>

製品の特性

製品の状態	Liquid
保存方法	Shipped at 4°C. Store at +4°C short term (1-2 weeks). Upon delivery aliquot. Store at -20°C long term. Avoid freeze / thaw cycle.
バッファー	pH: 7.2 Preservative: 0.01% Sodium azide Constituents: PBS, 40% Glycerol (glycerin, glycerine), 0.05% BSA
精製度	Protein A purified
ポリクローナル	モノクローナル
クローン名	EPR21199

アプリケーション

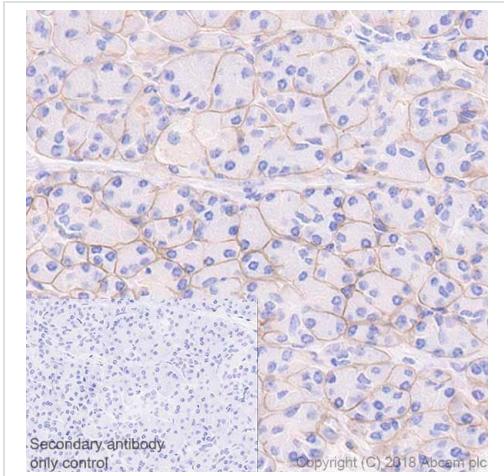
The Abpromise guarantee Abpromise保証は、次のテスト済みアプリケーションにおけるab233389の使用に適用されず
アプリケーションノートには、推奨の開始希釈率がありますが、適切な希釈率につきましてはご検討ください。

アプリケーション	Abreviews	特記事項
WB		1/1000. Detects a band of approximately 210-250 kDa (predicted molecular weight: 178 kDa).
IHC-P	★★★★★ (1)	1/2000. Perform heat mediated antigen retrieval with Tris/EDTA buffer pH 9.0 before commencing with IHC staining protocol.
IP		1/30.
Flow Cyt (Intra)		1/50.

ターゲット情報

機能	Binding to cells via a high affinity receptor, laminin is thought to mediate the attachment, migration and organization of cells into tissues during embryonic development by interacting with other extracellular matrix components.
組織特異性	Found in the basement membranes (major component).
配列類似性	Contains 11 laminin EGF-like domains. Contains 1 laminin IV type A domain. Contains 1 laminin N-terminal domain.
ドメイン	The alpha-helical domains I and II are thought to interact with other laminin chains to form a coiled coil structure. Domains VI and IV are globular.
細胞内局在	Secreted > extracellular space > extracellular matrix > basement membrane.

画像

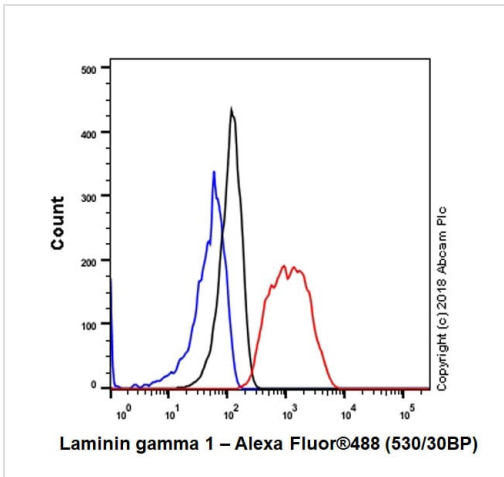


Immunohistochemistry (Formalin/PFA-fixed paraffin-embedded sections) - Anti-Laminin gamma 1 antibody [EPR21199] (ab233389)

Immunohistochemical analysis of paraffin-embedded human pancreas tissue labeling Laminin gamma 1 with ab233389 at 1/2000 dilution, followed by Goat Anti-Rabbit IgG H&L (HRP) ready to use. Positive staining in basement membrane of human pancreas (PMID: 15159456) is observed. Counter stained with Hematoxylin.

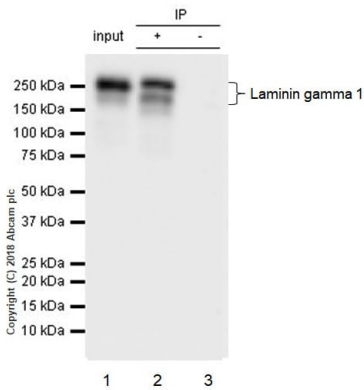
Secondary antibody only control: Used PBS instead of primary antibody, secondary antibody is Goat Anti-Rabbit IgG H&L (HRP) ready to use.

Perform heat-mediated antigen retrieval using **ab93684** (Tris/EDTA buffer, pH 9.0).



Flow Cytometry (Intracellular) - Anti-Laminin gamma 1 antibody [EPR21199] (ab233389)

Intracellular flow cytometric analysis of 4% paraformaldehyde-fixed, 90% methanol-permeabilized A431 (human epidermoid carcinoma cell line) cell line labeling Laminin gamma 1 with ab233389 at 1/50 (red) compared with Rabbit monoclonal IgG Isotype control (**ab172730**) (black) and an unlabeled control (cells without incubation with primary antibody and secondary antibody) (blue). Goat Anti-Rabbit IgG H&L (Alexa Fluor[®] 488) (**ab150077**), at 1/2000 dilution was used as the secondary antibody.



Immunoprecipitation - Anti-Laminin gamma 1 antibody [EPR21199] (ab233389)

Laminin gamma 1 was immunoprecipitated from 0.35 mg of A431 (human epidermoid carcinoma cell line) whole cell lysate with ab233389 at 1/30 dilution. Western blot was performed from the immunoprecipitate using ab233389 at 1/1000 dilution. VeriBlot for IP Detection Reagent (HRP) ([ab131366](#)), was used for detection at 1/5000 dilution.

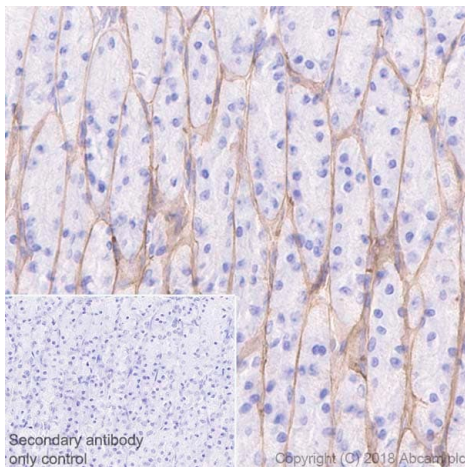
Lane 1: A431 whole lysate 10 µg (Input).

Lane 2: ab233389 IP in A431 whole cell lysate.

Lane 3: Rabbit monoclonal IgG ([ab172730](#)) instead of ab233389 in A431 whole cell lysate.

Blocking and dilution buffer and concentration: 5% NFDm/TBST.

Exposure time: 15 seconds.

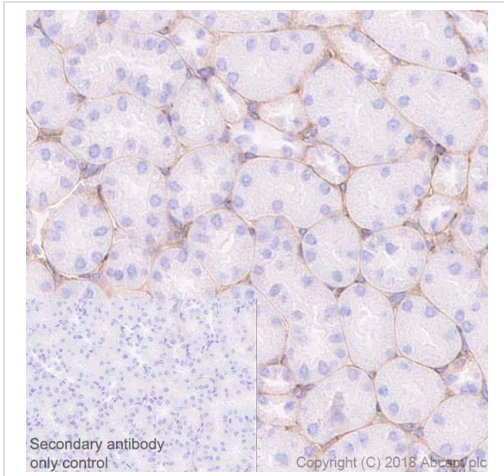


Immunohistochemistry (Formalin/PFA-fixed paraffin-embedded sections) - Anti-Laminin gamma 1 antibody [EPR21199] (ab233389)

Immunohistochemical analysis of paraffin-embedded rat stomach tissue labeling Laminin gamma 1 with ab233389 at 1/2000 dilution, followed by Goat Anti-Rabbit IgG H&L (HRP) ready to use. Positive staining in basement membrane of rat stomach (PMID: 12571278) is observed. Counter stained with Hematoxylin.

Secondary antibody only control: Used PBS instead of primary antibody, secondary antibody is Goat Anti-Rabbit IgG H&L (HRP) ready to use.

Perform heat-mediated antigen retrieval using [ab93684](#) (Tris/EDTA buffer, pH 9.0).

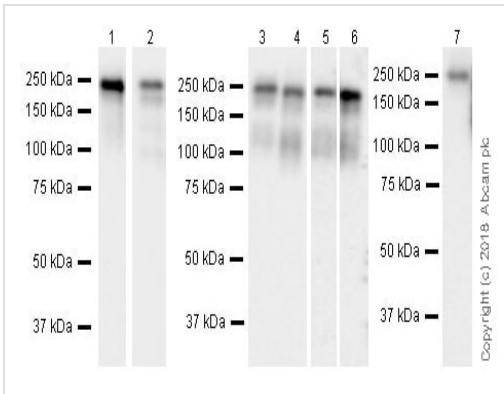


Immunohistochemistry (Formalin/PFA-fixed paraffin-embedded sections) - Anti-Laminin gamma 1 antibody [EPR21199] (ab233389)

Immunohistochemical analysis of paraffin-embedded mouse kidney tissue labeling Laminin gamma 1 with ab233389 at 1/2000 dilution, followed by Goat Anti-Rabbit IgG H&L (HRP) ready to use. Positive staining in the basement membrane of mouse kidney (PMID: 21903675) is observed. Counter stained with Hematoxylin.

Secondary antibody only control: Used PBS instead of primary antibody, secondary antibody is Goat Anti-Rabbit IgG H&L (HRP) ready to use.

Perform heat-mediated antigen retrieval using [ab93684](#) (Tris/EDTA buffer, pH 9.0).



Western blot - Anti-Laminin gamma 1 antibody [EPR21199] (ab233389)

All lanes : Anti-Laminin gamma 1 antibody [EPR21199] (ab233389) at 1/5000 dilution

Lane 1 : C6 (rat glial tumor glial cell line) whole cell lysate at 10 µg

Lane 2 : PC-12 (rat adrenal gland pheochromocytoma cell line) whole cell lysate at 20 µg

Lane 3 : Rat heart lysate at 10 µg

Lane 4 : Rat kidney lysate at 10 µg

Lane 5 : Rat brain lysate at 10 µg

Lane 6 : Rat spleen lysate at 10 µg

Lane 7 : Mouse brain lysate at 10 µg

Secondary

All lanes : Goat Anti-Rabbit IgG H&L (HRP) ([ab97051](#)) at 1/100000 dilution

Predicted band size: 178 kDa

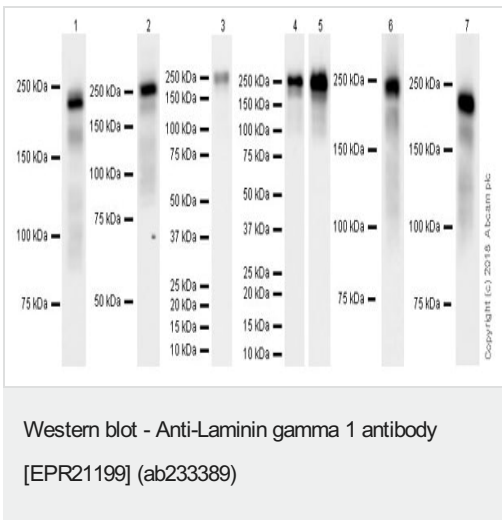
Observed band size: 210-250 kDa

Blocking/Dilution buffer: 5% NFDM/TBST.

Exposure times.

Lane 1: 70 seconds. Lane 2: 15 seconds. Lanes 3 & 4: 10 seconds. Lanes 5 & 6: 3 minutes. Lane 7: 48 seconds.

The expression profile observed is consistent with what has been described in the literature (PMID: 18263645, 11067943, 23857767, 28928891).



Lanes 1-3 & 6-7 : Anti-Laminin gamma 1 antibody [EPR21199] (ab233389) at 1/5000 dilution

Lanes 4-5 : Anti-Laminin gamma 1 antibody [EPR21199] (ab233389) at 1/1000 dilution

Lane 1 : A431 (human epidermoid carcinoma cell line) whole cell lysate

Lane 2 : NIH:OVCAR-3 (human ovary adenocarcinoma cell line) whole cell lysate

Lane 3 : HeLa (human epithelial cell line from cervix adenocarcinoma) whole cell lysate

Lane 4 : MCF7 (human breast adenocarcinoma cell line) whole cell lysate

Lane 5 : A549 (human lung carcinoma cell line) whole cell lysate

Lane 6 : Human fetal heart lysate

Lane 7 : Human fetal kidney lysate

Lysates/proteins at 10 µg per lane.

Secondary

Lanes 1-5 : Goat Anti-Rabbit IgG H&L (HRP) ([ab97051](#)) at 1/100000 dilution

Lanes 6-7 : VeriBlot for IP Detection Reagent (HRP) ([ab131366](#)) at 1/4000 dilution

Predicted band size: 178 kDa

Observed band size: 210-250 kDa

Blocking/Dilution buffer: 5% NFDM/TBST.

Exposure times.

Lanes 1, 2 & 7: 15 seconds. Lane 3: 8 seconds. Lanes 4: 37 seconds. Lanes 5 & 6: 10 seconds.

The expression profile observed is consistent with what has been described in the literature (PMID: 18263645, 11067943, 23857767, 28928891).

Why choose a recombinant antibody?

Research with confidence
Consistent and reproducible results

Long-term and scalable supply
Recombinant technology

Success from the first experiment
Confirmed specificity

Ethical standards compliant
Animal-free production

Anti-Laminin gamma 1 antibody [EPR21199]
(ab233389)

Please note: All products are "FOR RESEARCH USE ONLY. NOT FOR USE IN DIAGNOSTIC PROCEDURES"

Our Abpromise to you: Quality guaranteed and expert technical support

- Replacement or refund for products not performing as stated on the datasheet
- Valid for 12 months from date of delivery
- Response to your inquiry within 24 hours
- We provide support in Chinese, English, French, German, Japanese and Spanish
- Extensive multi-media technical resources to help you
- We investigate all quality concerns to ensure our products perform to the highest standards

If the product does not perform as described on this datasheet, we will offer a refund or replacement. For full details of the Abpromise, please visit <https://www.abcam.co.jp/abpromise> or contact our technical team.

Terms and conditions

- Guarantee only valid for products bought direct from Abcam or one of our authorized distributors