


Anti-Laminin beta 1 antibody [EPR3190(2)] ab109293

KO 評価済 リコンビナント RabMAb

2 References 画像数 4

製品の概要

製品名	Anti-Laminin beta 1 antibody [EPR3190(2)]
製品の詳細	Rabbit monoclonal [EPR3190(2)] to Laminin beta 1
由来種	Rabbit
アプリケーション	適用あり: Flow Cyt (Intra), WB 適用なし: ICC/IF, IHC-P or IP
種交差性	交差種: Human 交差が予測される動物種: Mouse, Rat 
免疫原	Synthetic peptide. This information is proprietary to Abcam and/or its suppliers.
ポジティブ・コントロール	WB: Human fetal kidney, HeLa and A431 lysates. Flow Cyt (intra): A431 cells
特記事項	<p>This product is a recombinant monoclonal antibody, which offers several advantages including:</p> <ul style="list-style-type: none"> - High batch-to-batch consistency and reproducibility - Improved sensitivity and specificity - Long-term security of supply - Animal-free production <p>For more information see here.</p> <p>Our RabMAb[®] technology is a patented hybridoma-based technology for making rabbit monoclonal antibodies. For details on our patents, please refer to RabMAb[®] patents.</p>

製品の特性

製品の状態	Liquid
保存方法	Shipped at 4°C. Store at -20°C. Stable for 12 months at -20°C.
バッファー	pH: 7.20 Preservative: 0.01% Sodium azide Constituents: 9% PBS, 40% Glycerol (glycerin, glycerine), 0.05% BSA, 50% Tissue culture supernatant
精製度	Protein A purified
ポリ/モノ	モノクローナル
クローン名	EPR3190(2)

アプリケーション

The Abpromise guarantee Abpromise保証は、 次のテスト済みアプリケーションにおけるab109293の使用に適用されます
アプリケーションノートには、推奨の開始希釈率がありますが、適切な希釈率につきましてはご検討ください。

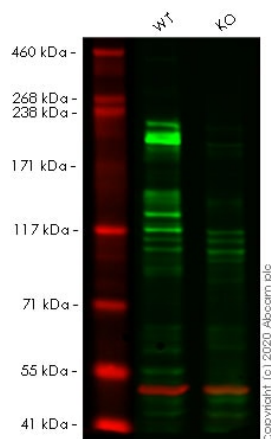
アプリケーション	Abreviews	特記事項
Flow Cyt (Intra)		1/100 - 1/500. ab172730 - Rabbit monoclonal IgG, is suitable for use as an isotype control with this antibody.
WB		1/1000 - 1/10000. Detects a band of approximately 220 kDa (predicted molecular weight: 198 kDa).

追加情報 Is unsuitable for ICC/IF, IHC-P or IP.

ターゲット情報

機能	Binding to cells via a high affinity receptor, laminin is thought to mediate the attachment, migration and organization of cells into tissues during embryonic development by interacting with other extracellular matrix components.
配列類似性	Contains 13 laminin EGF-like domains. Contains 1 laminin IV type B domain. Contains 1 laminin N-terminal domain.
ドメイン	The alpha-helical domains I and II are thought to interact with other laminin chains to form a coiled coil structure. Domains VI and IV are globular.
細胞内局在	Secreted > extracellular space > extracellular matrix > basement membrane. Major component.

画像



Western blot - Anti-Laminin beta 1 antibody [EPR3190(2)] (ab109293)

All lanes : Anti-Laminin beta 1 antibody [EPR3190(2)] (ab109293) at 1/1000 dilution

Lane 1 : Wild-type HeLa cell lysate

Lane 2 : LAMB1 knockout HeLa cell lysate

Lysates/proteins at 20 µg per lane.

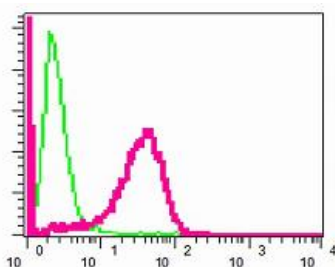
Performed under reducing conditions.

Predicted band size: 198 kDa

Observed band size: 200 kDa

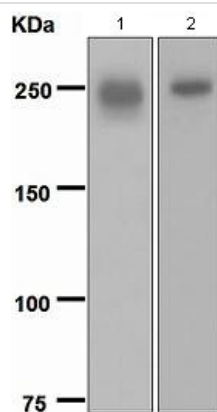
Lanes 1- 2: Merged signal (red and green). Green - ab109293 observed at 200 kDa. Red - Anti-alpha Tubulin antibody [DM1A] - Loading Control (**ab7291**) observed at 50 kDa.

ab109293 was shown to react with Laminin beta 1 in wild-type HeLa cells in western blot. Loss of signal was observed when knockout cell line **ab265414** (knockout cell lysate **ab257499**) was used. Wild-type HeLa and LAMB1 knockout HeLa cell lysates were subjected to SDS-PAGE. Membrane was blocked for 1 hour at room temperature in 0.1% TBST with 3% non-fat dried milk. ab109293 and Anti-alpha Tubulin antibody [DM1A] - Loading Control (**ab7291**) overnight at 4°C at a 1 in 1000 dilution and a 1 in 20000 dilution respectively. Blots were developed with Goat anti-Rabbit IgG H&L (IRDye®800CW) preadsorbed (**ab216773**) and Goat anti-Mouse IgG H&L (IRDye®680RD) preadsorbed (**ab216776**) secondary antibodies at 1 in 20000 dilution for 1 hour at room temperature before imaging.



Flow Cytometry (Intracellular) - Anti-Laminin beta 1 antibody [EPR3190(2)] (ab109293)

Intracellular flow cytometric analysis of permeabilized A431 cells using ab109293 (red) at a dilution of 1/100 or a rabbit IgG (negative) (green).



Western blot - Anti-Laminin beta 1 antibody
[EPR3190(2)] (ab109293)

All lanes : Anti-Laminin beta 1 antibody [EPR3190(2)] (ab109293)
at 1/1000 dilution

Lane 1 : Human fetal kidney lysate

Lane 2 : A431 cell lysate

Lysates/proteins at 10 µg per lane.

Predicted band size: 198 kDa

Why choose a
recombinant antibody?



**Research with
confidence**
Consistent and
reproducible results



**Long-term and
scalable supply**
Recombinant
technology



**Success from the
first experiment**
Confirmed
specificity



**Ethical standards
compliant**
Animal-free
production

Anti-Laminin beta 1 antibody [EPR3190(2)]
(ab109293)

Please note: All products are "FOR RESEARCH USE ONLY. NOT FOR USE IN DIAGNOSTIC PROCEDURES"

Our Abpromise to you: Quality guaranteed and expert technical support

- Replacement or refund for products not performing as stated on the datasheet
- Valid for 12 months from date of delivery
- Response to your inquiry within 24 hours
- We provide support in Chinese, English, French, German, Japanese and Spanish
- Extensive multi-media technical resources to help you
- We investigate all quality concerns to ensure our products perform to the highest standards

If the product does not perform as described on this datasheet, we will offer a refund or replacement. For full details of the Abpromise, please visit <https://www.abcam.co.jp/abpromise> or contact our technical team.

Terms and conditions

- Guarantee only valid for products bought direct from Abcam or one of our authorized distributors