

Anti-Laminin alpha 5/LAMA5 antibody [EPR18919] ab184330

リコンビナント RabMAb[®]

★★★★☆ **2 Abreviews** **4 References** **画像数 4**

製品の概要

製品名	Anti-Laminin alpha 5/LAMA5 antibody [EPR18919]
製品の詳細	Rabbit monoclonal [EPR18919] to Laminin alpha 5/LAMA5
由来種	Rabbit
特異性	This antibody reacts weakly with Laminin alpha 3
アプリケーション	適用あり: WB
種交差性	交差種: Mouse, Rat, Human, Recombinant fragment
免疫原	Recombinant fragment. This information is proprietary to Abcam and/or its suppliers.
ポジティブ・コントロール	WB: Mouse Laminin alpha 5/LAMA5 and alpha 3 fragment recombinant proteins; Human fetal kidney lysate; A549 whole cell lysate; Mouse P5 fetal kidney and P3 fetal lung lysates; Rat kidney lysate.
特記事項	<p>This product is a recombinant monoclonal antibody, which offers several advantages including:</p> <ul style="list-style-type: none">- High batch-to-batch consistency and reproducibility- Improved sensitivity and specificity- Long-term security of supply- Animal-free production <p>For more information see here.</p> <p>Our RabMAb[®] technology is a patented hybridoma-based technology for making rabbit monoclonal antibodies. For details on our patents, please refer to RabMAb[®] patents.</p>

製品の特性

製品の状態	Liquid
保存方法	Shipped at 4°C. Store at +4°C short term (1-2 weeks). Upon delivery aliquot. Store at -20°C long term. Avoid freeze / thaw cycle.
バッファー	pH: 7.2 Preservative: 0.01% Sodium azide Constituents: 59% PBS, 0.05% BSA, 40% Glycerol (glycerin, glycerine)
精製度	Protein A purified
ポリ/モノ	モノクローナル

クローン名 EPR18919
アイソタイプ IgG

アプリケーション

The Abpromise guarantee **Abpromise保証は、** 次のテスト済みアプリケーションにおけるab184330の使用に適用されます
アプリケーションノートには、推奨の開始希釈率がありますが、適切な希釈率につきましてはご検討ください。

アプリケーション	Abreviews	特記事項
WB		1/1000. Detects a band of approximately 404 kDa (predicted molecular weight: 404 kDa).

ターゲット情報

機能 Binding to cells via a high affinity receptor, laminin is thought to mediate the attachment, migration and organization of cells into tissues during embryonic development by interacting with other extracellular matrix components.

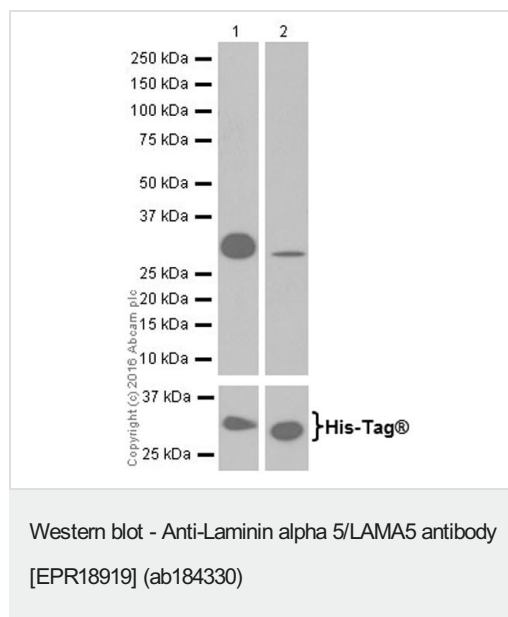
組織特異性 Expressed in heart, lung, kidney, skeletal muscle, pancreas, retina and placenta. Little or no expression in brain and liver.

配列類似性 Contains 22 laminin EGF-like domains.
Contains 5 laminin G-like domains.
Contains 1 laminin IV type A domain.
Contains 1 laminin N-terminal domain.

ドメイン Domain G is globular and is part of the major cell-binding site located in the long arm of the laminin heterotrimer.

細胞内局在 Secreted, extracellular space, extracellular matrix, basement membrane. Major component.

画像



All lanes : Anti-Laminin alpha 5/LAMA5 antibody [EPR18919] (ab184330) at 1/1000 dilution

Lane 1 : Mouse Laminin alpha 5/LAMA5 fragment recombinant protein

Lane 2 : Mouse Laminin alpha 3 fragment recombinant protein

Lysates/proteins at 0.01 µg per lane.

Secondary

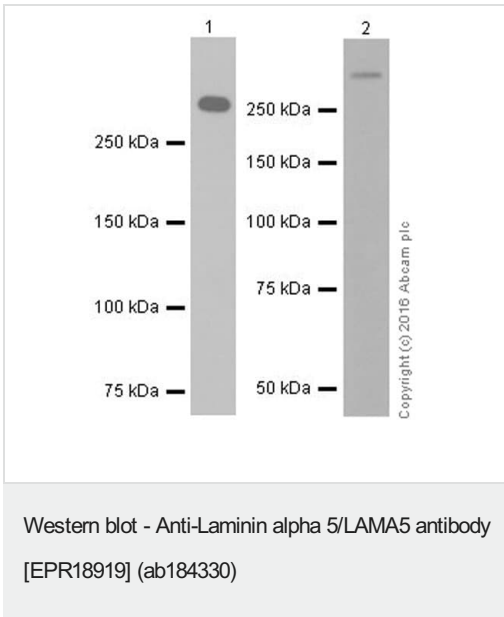
All lanes : Goat Anti-Rabbit IgG H&L (HRP) (**ab97051**) at 1/100000 dilution

Predicted band size: 404 kDa

Blocking/Dilution buffer: 5% NFDm/TBST.

Exposure time: Lane 1: 15 seconds; Lane 2: 3 minutes.

Mouse Laminin alpha 5/LAMA5 fragment recombinant protein contains aa46-304 with a His-Tag; Mouse Laminin alpha 3 fragment recombinant protein contains aa43-295 with a His-Tag.



All lanes : Anti-Laminin alpha 5/LAMA5 antibody [EPR18919] (ab184330) at 1/1000 dilution

Lane 1 : Human fetal kidney lysate

Lane 2 : A549 (Human lung carcinoma cell line) whole cell lysate

Lysates/proteins at 10 µg per lane.

Secondary

All lanes : Goat Anti-Rabbit IgG H&L (HRP) ([ab97051](#)) at 1/20000 dilution

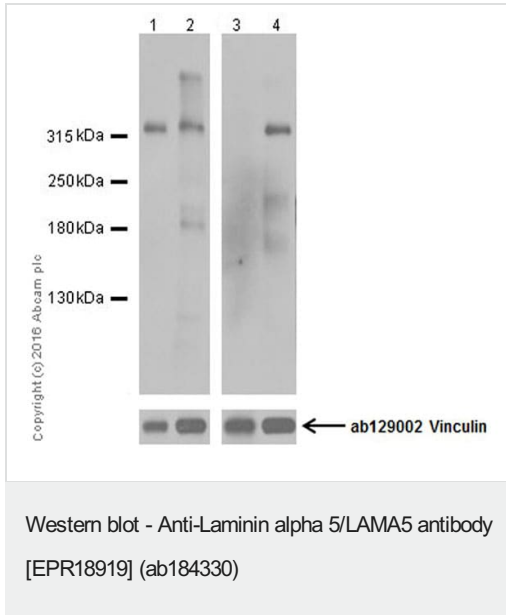
Predicted band size: 404 kDa

Observed band size: 404 kDa

Exposure time: 3 minutes

Blocking/Dilution buffer: 5% NFDm/TBST.

The expression profile observed is consistent with what has been described in the literature (PMID:12559092; PMID:9624186).



All lanes : Anti-Laminin alpha 5/LAMA5 antibody [EPR18919] (ab184330) at 1/1000 dilution

Lane 1 : Mouse P5 fetal kidney lysate

Lane 2 : Mouse P3 fetal lung lysate

Lane 3 : Mouse liver lysate

Lane 4 : Rat kidney lysate

Lysates/proteins at 20 µg per lane.

Secondary

All lanes : Goat Anti-Rabbit IgG H&L (HRP) (**ab97051**) at 1/100000 dilution

Predicted band size: 404 kDa

Observed band size: 404 kDa

Blocking/Dilution buffer: 5% NFDM/TBST.

Exposure time: Lane 1 and 2: 30 seconds; Lane 3 and 4: 3 minutes.

The expression profile observed is consistent with what has been described in the literature (PMID:12559092; PMID:9624186).

Negative control: mouse liver (PMID:7499364).

Why choose a recombinant antibody?

- Research with confidence**
Consistent and reproducible results
- Long-term and scalable supply**
Recombinant technology
- Success from the first experiment**
Confirmed specificity
- Ethical standards compliant**
Animal-free production

Anti-Laminin alpha 5/LAMA5 antibody [EPR18919] (ab184330)

Please note: All products are "FOR RESEARCH USE ONLY. NOT FOR USE IN DIAGNOSTIC PROCEDURES"

Our Abpromise to you: Quality guaranteed and expert technical support

- Replacement or refund for products not performing as stated on the datasheet
- Valid for 12 months from date of delivery
- Response to your inquiry within 24 hours

- We provide support in Chinese, English, French, German, Japanese and Spanish
- Extensive multi-media technical resources to help you
- We investigate all quality concerns to ensure our products perform to the highest standards

If the product does not perform as described on this datasheet, we will offer a refund or replacement. For full details of the Abpromise, please visit <https://www.abcam.co.jp/abpromise> or contact our technical team.

Terms and conditions

- Guarantee only valid for products bought direct from Abcam or one of our authorized distributors