

Anti-Lamin B1 antibody ab65986

★★★★★ 3 Abreviews 39 References 画像数 5

医薬用外劇物

製品の概要

製品名	Anti-Lamin B1 antibody
製品の詳細	Rabbit polyclonal to Lamin B1
由来種	Rabbit
アプリケーション	適用あり: IHC-Fr, WB, IHC-P, ICC
種交差性	交差種: Rat, Human
免疫原	Synthetic peptide corresponding to Human Lamin B1 aa 570-586 (C terminal). Sequence: FHQQGTPRASNRSCAIM Database link: P20700 Run BLAST with Run BLAST with
ポジティブ・コントロール	WB: Rat brain tissue lysate IHC-P:Mammary cancer sections; IHC-F: Rat Intestine Tissue ICC: A549 Cells
特記事項	<p>The Life Science industry has been in the grips of a reproducibility crisis for a number of years. Abcam is leading the way in addressing this with our range of recombinant monoclonal antibodies and knockout edited cell lines for gold-standard validation. Please check that this product meets your needs before purchasing.</p> <p>If you have any questions, special requirements or concerns, please send us an inquiry and/or contact our Support team ahead of purchase. Recommended alternatives for this product can be found below, along with publications, customer reviews and Q&As</p>

製品の特性

製品の状態	Liquid
保存方法	Shipped at 4°C. Upon delivery aliquot and store at -20°C. Avoid freeze / thaw cycles.
バッファー	Preservatives: 0.025% Thimerosal (merthiolate), 0.025% Sodium azide Constituents: 2.5% BSA, 0.45% Sodium chloride, 0.1% Dibasic monohydrogen sodium phosphate
精製度	Immunogen affinity purified
ポリ/モノ	ポリクローナル

アプリケーション

The Abpromise guarantee **Abpromise保証は、次のテスト済みアプリケーションにおけるab65986の使用に適用されます**

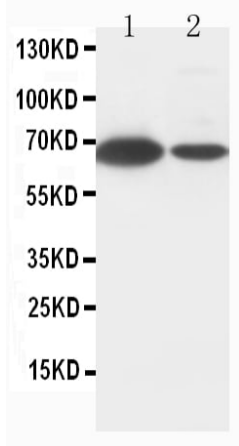
アプリケーションノートには、推奨の開始希釈率がありますが、適切な希釈率につきましてはご確認ください。

アプリケーション	Abreviews	特記事項
IHC-Fr		Use a concentration of 0.5 - 1 µg/ml. Formalin or acetone fixed tissues.
WB		Use a concentration of 0.1 - 0.5 µg/ml. Detects a band of approximately 70 kDa (predicted molecular weight: 66 kDa).
IHC-P		Use a concentration of 0.5 - 1 µg/ml. Perform heat mediated antigen retrieval before commencing with IHC staining protocol.
ICC		Use a concentration of 0.5 - 1 µg/ml. Acetone fixed.

ターゲット情報

機能	Lamins are components of the nuclear lamina, a fibrous layer on the nucleoplasmic side of the inner nuclear membrane, which is thought to provide a framework for the nuclear envelope and may also interact with chromatin.
関連疾患	Defects in LMNB1 are the cause of leukodystrophy demyelinating autosomal dominant adult-onset (ADLD) [MIM:169500]. ADLD is a slowly progressive and fatal demyelinating leukodystrophy, presenting in the fourth or fifth decade of life. Clinically characterized by early autonomic abnormalities, pyramidal and cerebellar dysfunction, and symmetric demyelination of the CNS. It differs from multiple sclerosis and other demyelinating disorders in that neuropathology shows preservation of oligodendroglia in the presence of subtotal demyelination and lack of astrogliosis.
配列類似性	Belongs to the intermediate filament family.
翻訳後修飾	B-type lamins undergo a series of modifications, such as farnesylation and phosphorylation. Increased phosphorylation of the lamins occurs before envelope disintegration and probably plays a role in regulating lamin associations.
細胞内局在	Nucleus inner membrane.

画像



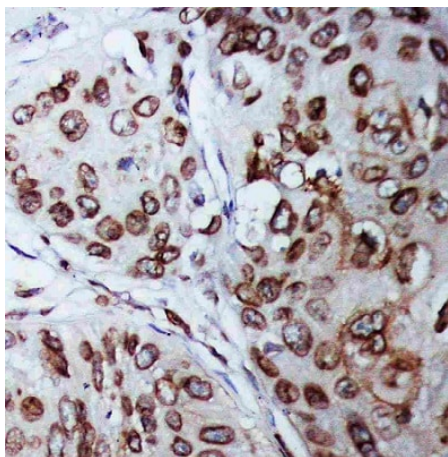
Western blot - Anti-Lamin B1 antibody (ab65986)

All lanes : Anti-Lamin B1 antibody (ab65986)

Lane 1 : MCF-7 Cell lysate

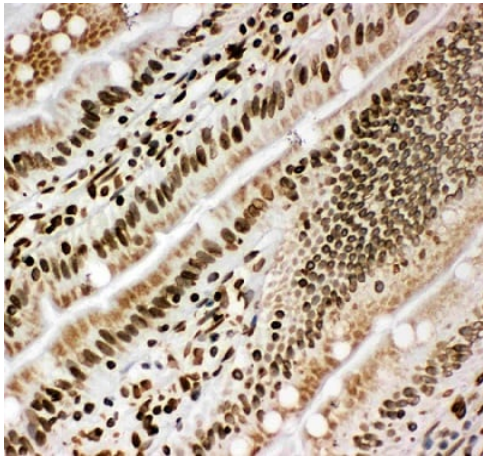
Lane 2 : HeLa Cell lysate

Predicted band size: 66 kDa



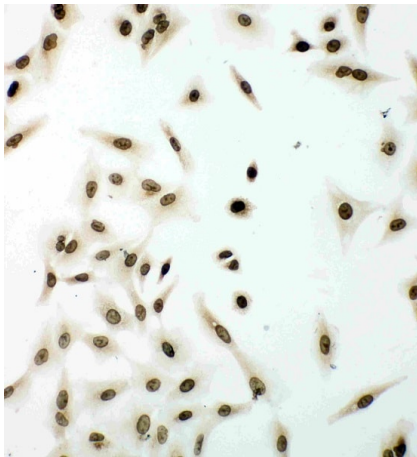
Immunohistochemistry (Formalin/PFA-fixed paraffin-embedded sections) - Anti-Lamin B1 antibody (ab65986)

Immunohistochemistry (Formalin/PFA-fixed paraffin-embedded sections) of Human Mammary Cancer Tissue staining Lamin B1 with ab65986



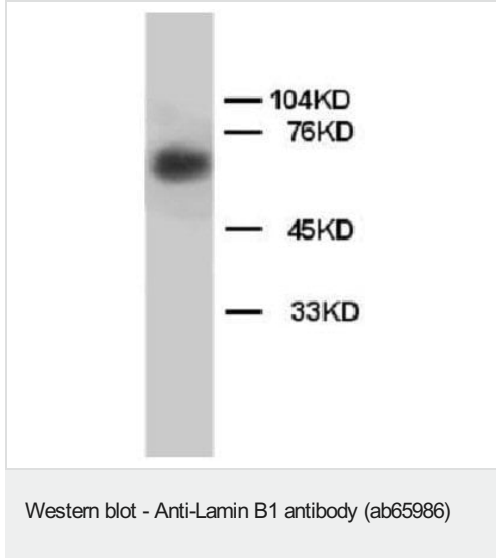
Immunohistochemistry (Frozen sections) of Rat Intestine Tissue staining Lamin B1 with ab65986

Immunohistochemistry (Frozen sections) - Anti-Lamin B1 antibody (ab65986)



Immunocytochemistry of A549 Cells staining Lamin B1 with ab65986.

Immunocytochemistry - Anti-Lamin B1 antibody (ab65986)



Anti-Lamin B1 antibody (ab65986) at 1 µg/ml + rat brain tissue lysate

Predicted band size: 66 kDa

Observed band size: 70 kDa

Please note: All products are "FOR RESEARCH USE ONLY. NOT FOR USE IN DIAGNOSTIC PROCEDURES"

Our Abpromise to you: Quality guaranteed and expert technical support

- Replacement or refund for products not performing as stated on the datasheet
- Valid for 12 months from date of delivery
- Response to your inquiry within 24 hours
- We provide support in Chinese, English, French, German, Japanese and Spanish
- Extensive multi-media technical resources to help you
- We investigate all quality concerns to ensure our products perform to the highest standards

If the product does not perform as described on this datasheet, we will offer a refund or replacement. For full details of the Abpromise, please visit <https://www.abcam.co.jp/abpromise> or contact our technical team.

Terms and conditions

- Guarantee only valid for products bought direct from Abcam or one of our authorized distributors