

Anti-Lambda Free Light Chain antibody [3D12] ab1944

1 Abreviews **画像数 1**

製品の概要

製品名	Anti-Lambda Free Light Chain antibody [3D12]
製品の詳細	Mouse monoclonal [3D12] to Lambda Free Light Chain
由来種	Mouse
特異性	Specific for independent constantly expressed epitope of lambda chain. Reacts with monomer and dimer forms of free lambda chains but not with lambda chain-bearing immunoglobulins.
アプリケーション	適用あり: IHC-P
種交差性	交差種: Human
免疫原	Full length native protein (purified) corresponding to Human Lambda Free Light Chain.
ポジティブ・コントロール	This antibody gave a positive result in IHC in the following FFPE tissue: Human normal tonsil.
特記事項	<p>Concentration varies from lot to lot and can be provided on request.</p> <p>The Life Science industry has been in the grips of a reproducibility crisis for a number of years. Abcam is leading the way in addressing this with our range of recombinant monoclonal antibodies and knockout edited cell lines for gold-standard validation. Please check that this product meets your needs before purchasing.</p> <p>If you have any questions, special requirements or concerns, please send us an inquiry and/or contact our Support team ahead of purchase. Recommended alternatives for this product can be found below, along with publications, customer reviews and Q&As</p>

製品の特性

製品の状態	Liquid
保存方法	Shipped at 4°C. Upon delivery aliquot and store at -20°C. Avoid freeze / thaw cycles.
バッファー	<p>pH: 7.40</p> <p>Preservative: 0.1% Sodium azide</p> <p>Constituent: PBS</p>
精製度	Protein A purified
特記事項 (精製)	Purity tested by electrophoresis.
ポリ/モノ	モノクローナル
クローン名	3D12
ミエローマ	Sp2/0

アプリケーション

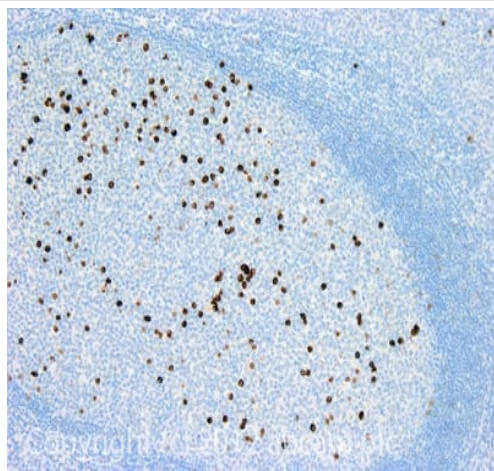
The Abpromise guarantee Abpromise保証は、次のテスト済みアプリケーションにおけるab1944の使用に適用されます
アプリケーションノートには、推奨の開始希釈率がありますが、適切な希釈率につきましてはご確認ください。

アプリケーション	Abreviews	特記事項
IHC-P		Use a concentration of 5 µg/ml.

ターゲット情報

関連性 standard

画像



Immunohistochemistry (Formalin/PFA-fixed paraffin-embedded sections) - Anti-Lambda Free Light Chain antibody [3D12] (ab1944)

IHC image of Lambda Free Light Chain staining in Human normal tonsil formalin fixed paraffin embedded tissue section, performed on a Leica Bond™ system using the standard protocol F. The section was pre-treated using heat mediated antigen retrieval with sodium citrate buffer (pH6, epitope retrieval solution 1) for 20 mins. The section was then incubated with abX1944, 5µg/ml, for 15 mins at room temperature and detected using an HRP conjugated compact polymer system. DAB was used as the chromogen. The section was then counterstained with haematoxylin and mounted with DPX.

For other IHC staining systems (automated and non-automated) customers should optimize variable parameters such as antigen retrieval conditions, primary antibody concentration and antibody incubation times.

Please note: All products are "FOR RESEARCH USE ONLY. NOT FOR USE IN DIAGNOSTIC PROCEDURES"

Our Abpromise to you: Quality guaranteed and expert technical support

- Replacement or refund for products not performing as stated on the datasheet
- Valid for 12 months from date of delivery
- Response to your inquiry within 24 hours
- We provide support in Chinese, English, French, German, Japanese and Spanish
- Extensive multi-media technical resources to help you

- We investigate all quality concerns to ensure our products perform to the highest standards

If the product does not perform as described on this datasheet, we will offer a refund or replacement. For full details of the Abpromise, please visit <https://www.abcam.co.jp/abpromise> or contact our technical team.

Terms and conditions

- Guarantee only valid for products bought direct from Abcam or one of our authorized distributors