




Anti-LAMA1 antibody [CL3087] ab210954

KO 評価済

1 Abreviews 画像数 5

製品の概要

製品名	Anti-LAMA1 antibody [CL3087]
製品の詳細	Mouse monoclonal [CL3087] to LAMA1
由来種	Mouse
アプリケーション	適用あり: IHC-P, WB
種交差性	交差種: Human 交差が予測される動物種: Mouse, Rat 
免疫原	Synthetic peptide within Human LAMA aa 600-700. The exact immunogen sequence used to generate this antibody is proprietary information. If additional detail on the immunogen is needed to determine the suitability of the antibody for your needs, please contact our Scientific Support team to discuss your requirements. Database link: P25391  Run BLAST with  Run BLAST with
エピトープ	ab210954 binds to an epitope located within the peptide sequence LVPENFQDFHSKRQI (aa 640 - 654)
ポジティブ・コントロール	WB: HeLa cell lysate; Human testis tissue lysate. IHC-P: Human lymph node and testis tissues.
特記事項	<p>The Life Science industry has been in the grips of a reproducibility crisis for a number of years. Abcam is leading the way in addressing this with our range of recombinant monoclonal antibodies and knockout edited cell lines for gold-standard validation. Please check that this product meets your needs before purchasing.</p> <p>If you have any questions, special requirements or concerns, please send us an inquiry and/or contact our Support team ahead of purchase. Recommended alternatives for this product can be found below, along with publications, customer reviews and Q&As</p>

製品の特性

製品の状態	Liquid
保存方法	Shipped at 4°C. Store at +4°C short term (1-2 weeks). Upon delivery aliquot. Store at -20°C long term. Avoid freeze / thaw cycle.
バッファー	pH: 7.20 Preservative: 0.02% Sodium azide

	Constituents: 59% PBS, 40% Glycerol (glycerin, glycerine)
精製度	Protein A purified
ポリ/モノ	モノクローナル
クローン名	CL3087
アイソタイプ	IgG1

アプリケーション

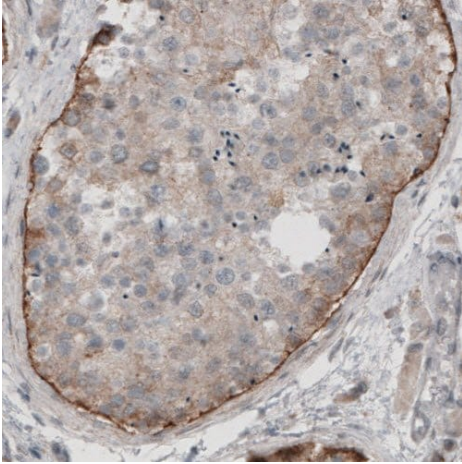
The Abpromise guarantee Abpromise保証は、 次のテスト済みアプリケーションにおけるab210954の使用に適用されます
 アプリケーションノートには、推奨の開始希釈率がありますが、適切な希釈率につきましてはご検討ください。

アプリケーション	Abreviews	特記事項
IHC-P		1/200 - 1/500. Perform heat mediated antigen retrieval with citrate buffer pH 6 before commencing with IHC staining protocol.
WB		1/500 - 1/1000. Predicted molecular weight: 337 kDa.

ターゲット情報

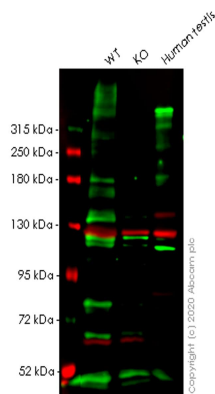
機能	Binding to cells via a high affinity receptor, laminin is thought to mediate the attachment, migration and organization of cells into tissues during embryonic development by interacting with other extracellular matrix components.
関連疾患	Poretti-Boltshauser syndrome
配列類似性	Contains 17 laminin EGF-like domains. Contains 5 laminin G-like domains. Contains 2 laminin IV type A domains. Contains 1 laminin N-terminal domain.
ドメイン	The alpha-helical domains I and II are thought to interact with other laminin chains to form a coiled coil structure. Domains VI, IV and G are globular.
翻訳後修飾	Tyrosine phosphorylated by PKDCC/VLK.
細胞内局在	Secreted, extracellular space, extracellular matrix, basement membrane. Major component.

画像



Immunohistochemistry (Formalin/PFA-fixed paraffin-embedded sections) - Anti-LAMA1 antibody [CL3087] (ab210954)

Immunohistochemical analysis of paraffin-embedded Human testis tissue, labeling LAMA1 using ab210954 at a 1/200 dilution.



Western blot - Anti-LAMA1 antibody [CL3087] (ab210954)

All lanes : Anti-LAMA1 antibody [CL3087] (ab210954) at 1/1000 dilution

Lane 1 : Wild-type HeLa cell lysate

Lane 2 : LAMA1 knockout HeLa cell lysate

Lane 3 : Human testis tissue lysate

Lysates/proteins at 20 µg per lane.

Secondary

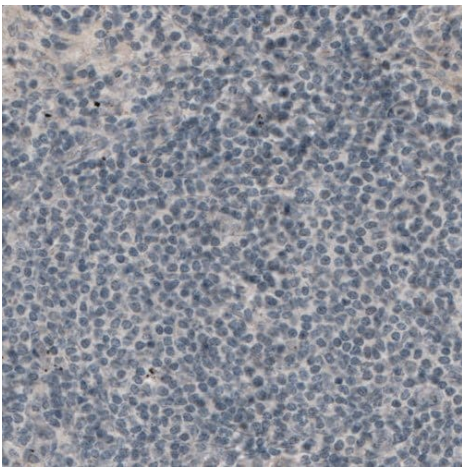
All lanes : Goat Anti-Rabbit IgG H&L (IRDye® 680RD) preadsorbed ([ab216777](#)) at 1/10000 dilution

Predicted band size: 337 kDa

Observed band size: 337 kDa

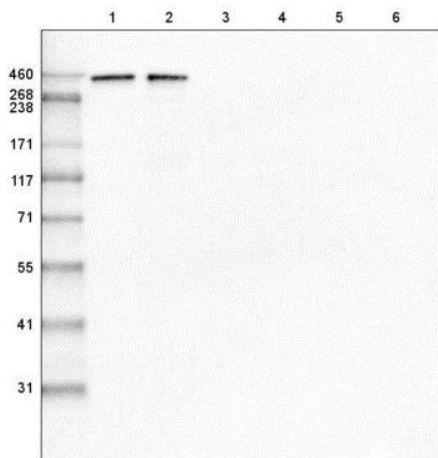
Lanes 1-3: Merged signal (red and green). Green - ab210954 observed at 337 kDa. Red - loading control [ab129002](#) observed at 124 kDa.

ab210954 Anti-LAMA1 antibody [CL3087] was shown to specifically react with LAMA1 in wild-type HeLa cells. Loss of signal was observed when knockout cell line **ab264991** (knockout cell lysate **ab258937**) was used. Wild-type and LAMA1 knockout samples were subjected to SDS-PAGE. ab210954 and Anti-Vinculin antibody [EPR8185] (**ab129002**) were incubated overnight at 4°C at 1 in 1000 dilution and 1 in 20000 dilution respectively. Blots were developed with Goat anti-Rabbit IgG H&L (IRDye® 680RD) preadsorbed (**ab216777**) and Goat anti-Mouse IgG H&L (IRDye® 800CW) preadsorbed (**ab216772**) secondary antibodies at 1 in 20000 dilution for 1 hour at room temperature before imaging.



Immunohistochemistry (Formalin/PFA-fixed paraffin-embedded sections) - Anti-LAMA1 antibody [CL3087] (ab210954)

Immunohistochemical analysis of paraffin-embedded Human lymph node tissue (negative control), labeling LAMA1 using ab210954 at a 1/200 dilution.



Western blot - Anti-LAMA1 antibody [CL3087] (ab210954)

All lanes : Anti-LAMA1 antibody [CL3087] (ab210954) at 1/500 dilution

Lane 1 : Recombinant protein fragment of human Laminin 111

Lane 2 : Recombinant protein fragment of human Laminin 121

Lane 3 : Recombinant protein fragment of human Laminin 221

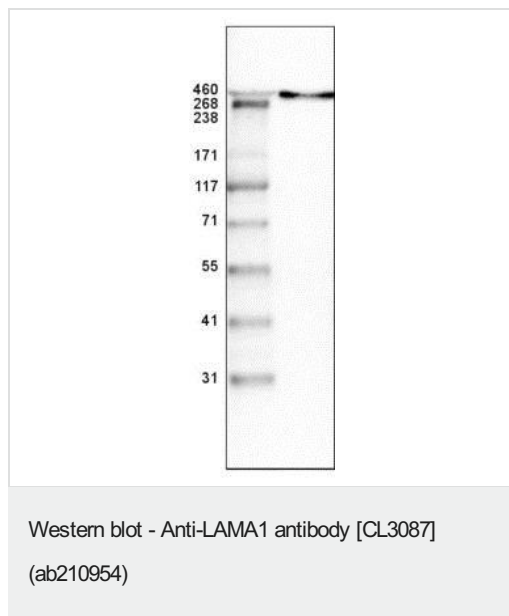
Lane 4 : Recombinant protein fragment of human Laminin 332

Lane 5 : Recombinant protein fragment of human Laminin 411

Lane 6 : Recombinant protein fragment of human Laminin 521

Developed using the ECL technique.

Predicted band size: 337 kDa



Anti-LAMA1 antibody [CL3087] (ab210954) at 1/500 dilution +
Human testis tissue lysate

Developed using the ECL technique.

Predicted band size: 337 kDa

Please note: All products are "FOR RESEARCH USE ONLY. NOT FOR USE IN DIAGNOSTIC PROCEDURES"

Our Abpromise to you: Quality guaranteed and expert technical support

- Replacement or refund for products not performing as stated on the datasheet
- Valid for 12 months from date of delivery
- Response to your inquiry within 24 hours
- We provide support in Chinese, English, French, German, Japanese and Spanish
- Extensive multi-media technical resources to help you
- We investigate all quality concerns to ensure our products perform to the highest standards

If the product does not perform as described on this datasheet, we will offer a refund or replacement. For full details of the Abpromise, please visit <https://www.abcam.co.jp/abpromise> or contact our technical team.

Terms and conditions

- Guarantee only valid for products bought direct from Abcam or one of our authorized distributors