

# Anti-Lactate Dehydrogenase B/LDH-B antibody [EP1565Y] ab53292

KO 評価済 リコンビナント RabMAb

★★★★☆ 1 Abreviews 14 References 画像数 5

### 製品の概要

製品名	Anti-Lactate Dehydrogenase B/LDH-B antibody [EP1565Y]
製品の詳細	Rabbit monoclonal [EP1565Y] to Lactate Dehydrogenase B/LDH-B
由来種	Rabbit
アプリケーション	<b>適用あり:</b> WB, IHC-P <b>適用なし:</b> Flow Cyt (Intra) or ICC/IF
種交差性	<b>交差種:</b> Human
免疫原	Synthetic peptide within Human Lactate Dehydrogenase B/LDH-B aa 1-100 (N terminal). The exact sequence is proprietary. Database link: <a href="#">P07195</a>
ポジティブ・コントロール	WB: Hap1, HEK-293T and HeLa cell lysates. IHC-P: Human heart muscle.
特記事項	This product is a recombinant monoclonal antibody, which offers several advantages including: <ul style="list-style-type: none"> <li>- High batch-to-batch consistency and reproducibility</li> <li>- Improved sensitivity and specificity</li> <li>- Long-term security of supply</li> <li>- Animal-free production</li> </ul> For more information <a href="#">see here</a> . Our RabMAb <sup>®</sup> technology is a patented hybridoma-based technology for making rabbit monoclonal antibodies. For details on our patents, please refer to <a href="#">RabMAb<sup>®</sup> patents</a> .  Mouse, Rat: We have preliminary internal testing data to indicate this antibody may not react with these species. Please contact us for more information.

### 製品の特性

製品の状態	Liquid
保存方法	Shipped at 4°C. Store at -20°C. Stable for 12 months at -20°C.
バッファー	pH: 7.20 Preservative: 0.01% Sodium azide Constituents: 59% PBS, 40% Glycerol (glycerin, glycerine), 0.5% BSA

精製度	Protein A purified
ポリ/モノ	モノクローナル
クローン名	EP1565Y
アイソタイプ	IgG

アプリケーション

The Abpromise guarantee      Abpromise保証は、次のテスト済みアプリケーションにおけるab53292の使用に適用されます  
アプリケーションノートには、推奨の開始希釈率がありますが、適切な希釈率につきましてはご確認ください。

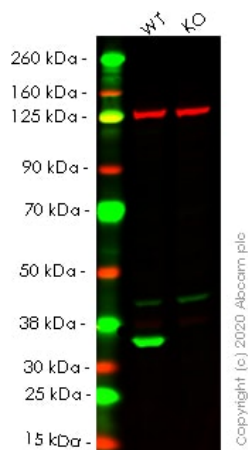
アプリケーション	Abreviews	特記事項
WB		1/50000 - 1/200000. Detects a band of approximately 37 kDa (predicted molecular weight: 37 kDa).
IHC-P	★★★★★ (1)	Use at an assay dependent concentration. Perform heat mediated antigen retrieval with citrate buffer pH 6 before commencing with IHC staining protocol.

追加情報      Is unsuitable for Flow Cyt (Intra) or ICC/IF.

ターゲット情報

パスウェイ	Fermentation; pyruvate fermentation to lactate; (S)-lactate from pyruvate: step 1/1.
関連疾患	Note=Defects in LDHB result in deficiency of lactate dehydrogenase, a condition with no clear symptomatic consequences. Lactate dehydrogenase deficiency can probably be considered a non-disease.
配列類似性	Belongs to the LDH/MDH superfamily. LDH family.
細胞内局在	Cytoplasm.

画像



Western blot - Anti-Lactate Dehydrogenase B/LDH-B antibody [EP1565Y] (ab53292)

**All lanes :** Anti-Lactate Dehydrogenase B/LDH-B antibody [EP1565Y] (ab53292) at 1/5000 dilution

**Lane 1 :** Wild-type HEK-293T cell lysate

**Lane 2 :** LDHB knockout HEK-293T cell lysate

Lysates/proteins at 20 µg per lane.

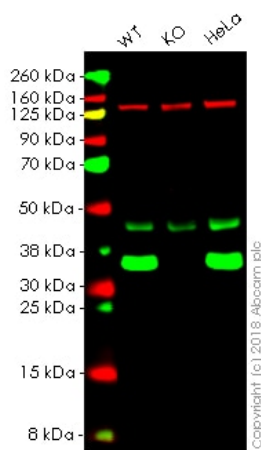
Performed under reducing conditions.

**Predicted band size:** 37 kDa

**Observed band size:** 37 kDa

**Lanes 1- 2:** Merged signal (red and green). Green - ab53292 observed at 37 kDa. Red - Anti-Vinculin antibody [VIN-54] observed at 124 kDa.

ab53292 was shown to react with Lactate Dehydrogenase B/LDH-B in wild-type HEK-293T cells in western blot. Loss of signal was observed when knockout cell line [ab255403](#) (knockout cell lysate [ab263761](#)) was used. Wild-type HEK-293T and LDHB knockout HEK-293T cell lysates were subjected to SDS-PAGE. Membrane was blocked for 1 hour at room temperature in 0.1% TBST with 3% non-fat dried milk. ab53292 and Anti-Vinculin antibody [VIN-54] overnight at 4°C at a 1 in 5000 dilution and a 1 in 20000 dilution respectively. Blots were developed with Goat anti-Rabbit IgG H&L (IRDye®800CW) preadsorbed ([ab216773](#)) and Goat anti-Mouse IgG H&L (IRDye®680RD) preadsorbed ([ab216776](#)) secondary antibodies at 1 in 20000 dilution for 1 hour at room temperature before imaging.



Western blot - Anti-Lactate Dehydrogenase B/LDH-B antibody [EP1565Y] (ab53292)

**All lanes :** Anti-Lactate Dehydrogenase B/LDH-B antibody [EP1565Y] (ab53292) at 1/50000 dilution

**Lane 1 :** Wild-type HAP1 whole cell lysate

**Lane 2 :** LDHB (Lactate Dehydrogenase B) knockout HAP1 whole cell lysate

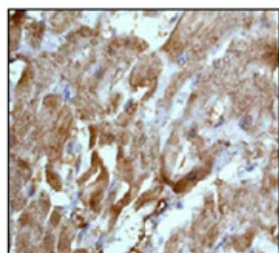
**Lane 3 :** HeLa whole cell lysate

Lysates/proteins at 20 µg per lane.

**Predicted band size:** 37 kDa

**Lanes 1 - 3:** Merged signal (red and green). Green - ab53292 observed at 37 kDa. Red - loading control, **ab130007**, observed at 130 kDa.

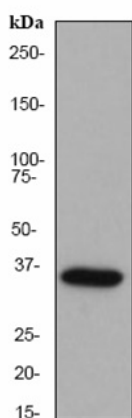
ab53292 was shown to specifically react with Lactate Dehydrogenase B in wild-type HAP1 cells as signal was lost in LDHB (Lactate Dehydrogenase B) knockout cells. Wild-type and LDHB (Lactate Dehydrogenase B) knockout samples were subjected to SDS-PAGE. Ab53292 and **ab130007** (Mouse anti-Vinculin loading control) were incubated overnight at 4°C at 1/50000 dilution and 1/20000 dilution respectively. Blots were developed with Goat anti-Rabbit IgG H&L (IRDye® 800CW) preabsorbed **ab216773** and Goat anti-Mouse IgG H&L (IRDye® 680RD) preabsorbed **ab216776** secondary antibodies at 1/20000 dilution for 1 hour at room temperature before imaging.



Immunohistochemistry (Formalin/PFA-fixed paraffin-embedded sections) - Anti-Lactate Dehydrogenase B/LDH-B antibody [EP1565Y] (ab53292)

Human heart muscle labeled with ab53292 at 1/100 - 1/250 dilution

Perform heat mediated antigen retrieval with citrate buffer pH 6 before commencing with IHC staining protocol.



Anti-Lactate Dehydrogenase B/LDH-B antibody [EP1565Y]  
(ab53292) + HeLa cell lysate at 10 µg

### Secondary

Goat anti-rabbit HRP

**Predicted band size:** 37 kDa

**Observed band size:** 37 kDa

Western blot - Anti-Lactate Dehydrogenase B/LDH-B antibody [EP1565Y] (ab53292)

### Why choose a recombinant antibody?



**Research with confidence**  
Consistent and reproducible results



**Long-term and scalable supply**  
Recombinant technology



**Success from the first experiment**  
Confirmed specificity



**Ethical standards compliant**  
Animal-free production

Anti-Lactate Dehydrogenase B/LDH-B antibody  
[EP1565Y] (ab53292)

**Please note:** All products are "FOR RESEARCH USE ONLY. NOT FOR USE IN DIAGNOSTIC PROCEDURES"

### Our Abpromise to you: Quality guaranteed and expert technical support

- Replacement or refund for products not performing as stated on the datasheet
- Valid for 12 months from date of delivery
- Response to your inquiry within 24 hours
- We provide support in Chinese, English, French, German, Japanese and Spanish
- Extensive multi-media technical resources to help you
- We investigate all quality concerns to ensure our products perform to the highest standards

If the product does not perform as described on this datasheet, we will offer a refund or replacement. For full details of the Abpromise, please visit <https://www.abcam.co.jp/abpromise> or contact our technical team.

## Terms and conditions

---

- Guarantee only valid for products bought direct from Abcam or one of our authorized distributors