




# Anti-Lactate Dehydrogenase B/LDH-B antibody ab195964

画像数 2

### 製品の概要

製品名	Anti-Lactate Dehydrogenase B/LDH-B antibody
製品の詳細	Goat polyclonal to Lactate Dehydrogenase B/LDH-B
由来種	Goat
アプリケーション	<b>適用あり:</b> WB, IHC-P
種交差性	<b>交差種:</b> Human <b>交差が予測される動物種:</b> Horse, Guinea pig, Chimpanzee, Monkey, Gorilla, Orangutan 
免疫原	Synthetic peptide corresponding to Human Lactate Dehydrogenase B/LDH-B aa 1-100 (internal sequence) (Cysteine residue). (Near N-terminus; NP_002291.1). Database link: <a href="#">P07195</a>  <a href="#">Run BLAST with</a>  <a href="#">Run BLAST with</a>
ポジティブ・コントロール	Human heart and kidney lysates; Human kidney tissue.
特記事項	<p>The Life Science industry has been in the grips of a reproducibility crisis for a number of years. Abcam is leading the way in addressing this with our range of recombinant monoclonal antibodies and knockout edited cell lines for gold-standard validation. Please check that this product meets your needs before purchasing.</p> <p>If you have any questions, special requirements or concerns, please send us an inquiry and/or contact our Support team ahead of purchase. Recommended alternatives for this product can be found below, along with publications, customer reviews and Q&amp;As</p>

### 製品の特性

製品の状態	Liquid
保存方法	Shipped at 4°C. Store at +4°C short term (1-2 weeks). Upon delivery aliquot. Store at -20°C long term. Avoid freeze / thaw cycle.
バッファー	pH: 7.30 Preservative: 0.02% Sodium azide Constituents: 99% Tris buffered saline, 0.5% BSA
精製度	Immunogen affinity purified
ポリモノ	ポリクローナル
アイソタイプ	IgG

## アプリケーション

**The Abpromise guarantee** **Abpromise保証は、** 次のテスト済みアプリケーションにおけるab195964の使用に適用されます  
アプリケーションノートには、推奨の開始希釈率がありますが、適切な希釈率につきましてはご検討ください。

アプリケーション	Abreviews	特記事項
WB		Use a concentration of 0.3 - 1 µg/ml. Detects a band of approximately 35 kDa (predicted molecular weight: 37 kDa).
IHC-P		Use a concentration of 5 µg/ml.

## ターゲット情報

### パスウェイ

Fermentation; pyruvate fermentation to lactate; (S)-lactate from pyruvate: step 1/1.

### 関連疾患

Note=Defects in LDHB result in deficiency of lactate dehydrogenase, a condition with no clear symptomatic consequences. Lactate dehydrogenase deficiency can probably be considered a non-disease.

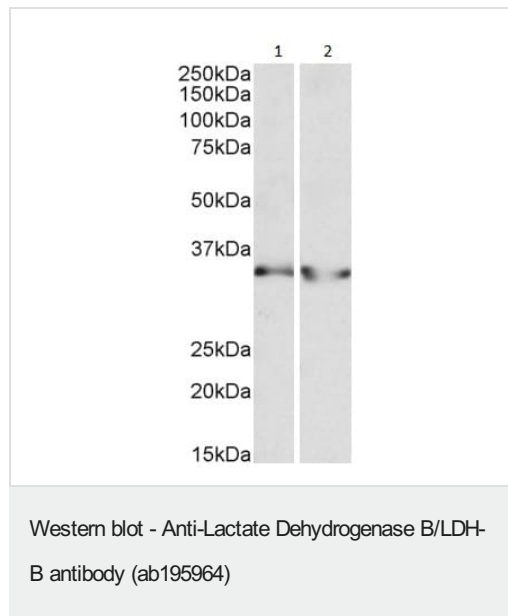
### 配列類似性

Belongs to the LDH/MDH superfamily. LDH family.

### 細胞内局在

Cytoplasm.

## 画像



**All lanes :** Anti-Lactate Dehydrogenase B/LDH-B antibody (ab195964) at 0.3 µg/ml

**Lane 1 :** Human heart lysate (in RIPA buffer)

**Lane 2 :** Human kidney lysate (in RIPA buffer)

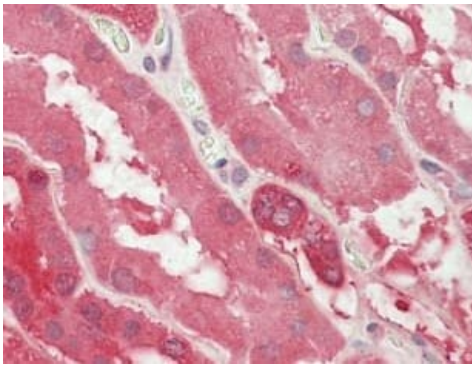
Lysates/proteins at 35 µg per lane.

Developed using the ECL technique.

**Predicted band size:** 37 kDa

**Observed band size:** 35 kDa

Primary incubation was 1 hour.



Immunohistochemical analysis of formalin-fixed, paraffin-embedded Human kidney tissue labeling Lactate Dehydrogenase B/LDH-B with ab195964 at 5 µg/mL.

Immunohistochemistry (Formalin/PFA-fixed paraffin-embedded sections) - Anti-Lactate Dehydrogenase B/LDH-B antibody (ab195964)

**Please note:** All products are "FOR RESEARCH USE ONLY. NOT FOR USE IN DIAGNOSTIC PROCEDURES"

#### **Our Abpromise to you: Quality guaranteed and expert technical support**

---

- Replacement or refund for products not performing as stated on the datasheet
- Valid for 12 months from date of delivery
- Response to your inquiry within 24 hours
  
- We provide support in Chinese, English, French, German, Japanese and Spanish
- Extensive multi-media technical resources to help you
- We investigate all quality concerns to ensure our products perform to the highest standards

If the product does not perform as described on this datasheet, we will offer a refund or replacement. For full details of the Abpromise, please visit <https://www.abcam.co.jp/abpromise> or contact our technical team.

#### **Terms and conditions**

---

- Guarantee only valid for products bought direct from Abcam or one of our authorized distributors