





Anti-KRT81 antibody [3B10-5B10] ab55407

2 References **画像数 3**

製品の概要

製品名	Anti-KRT81 antibody [3B10-5B10]
製品の詳細	Mouse monoclonal [3B10-5B10] to KRT81
由来種	Mouse
アプリケーション	適用あり: WB, ICC/IF, IHC-P
種交差性	交差種: Human
免疫原	Recombinant full length protein, corresponding to amino acids 304-505 of Human KRT81.  Run BLAST with   Run BLAST with 
特記事項	<p>This product was changed from ascites to tissue culture supernatant on 27/June/2019. Please note that the dilutions may need to be adjusted accordingly. If you have any questions, please do not hesitate to contact our scientific support team.</p> <p>The Life Science industry has been in the grips of a reproducibility crisis for a number of years. Abcam is leading the way in addressing this with our range of recombinant monoclonal antibodies and knockout edited cell lines for gold-standard validation. Please check that this product meets your needs before purchasing.</p> <p>If you have any questions, special requirements or concerns, please send us an inquiry and/or contact our Support team ahead of purchase. Recommended alternatives for this product can be found below, along with publications, customer reviews and Q&As</p>

製品の特性

製品の状態	Liquid
保存方法	Shipped at 4°C. Upon delivery aliquot and store at -20°C or -80°C. Avoid repeated freeze / thaw cycles.
バッファー	pH: 7.4
精製度	Tissue culture supernatant
特記事項(精製)	Purified from TCS.
ポリ/モノ	モノクローナル
クローン名	3B10-5B10
アイソタイプ	IgG2b
軽鎖の種類	kappa

アプリケーション

The Abpromise guarantee Abpromise保証は、次のテスト済みアプリケーションにおけるab55407の使用に適用されます
アプリケーションノートには、推奨の開始希釈率がありますが、適切な希釈率につきましてはご検討ください。

アプリケーション	Abreviews	特記事項
WB		
ICC/IF		
IHC-P		

追加情報

WB: Use at a concentration of 1-5 µg/ml.
IF/ICC: Use at a concentration of 10 µg/ml.
IHC-P: Use at a concentration of 3 µg/ml.

Not yet tested in other applications.
Optimal dilutions/concentrations should be determined by the end user.

ターゲット情報

組織特異性

Abundantly expressed in the differentiating cortex of growing (anagen) hair. Expression is restricted to the keratinocytes of the hair cortex and is absent from inner root sheath and medulla. Expressed in malignant lymph node tissue in breast carcinoma tissue.

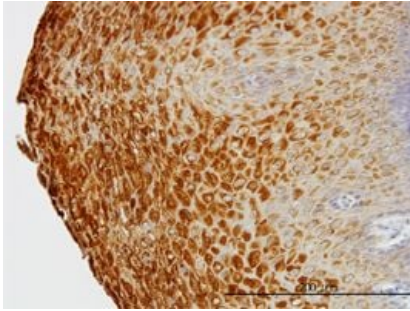
関連疾患

Defects in KRT81 are a cause of monilethrix (MLTRX) [MIM:158000]. Monilethrix is an autosomal dominant hair disorder characterized clinically by alopecia and follicular papules. Affected hairs have uniform elliptical nodes of normal thickness and intermittent constrictions, internodes at which the hair easily breaks. Usually only the scalp is involved, but in severe forms, the secondary sexual hair, eyebrows, eyelashes, and nails may also be affected.

配列類似性

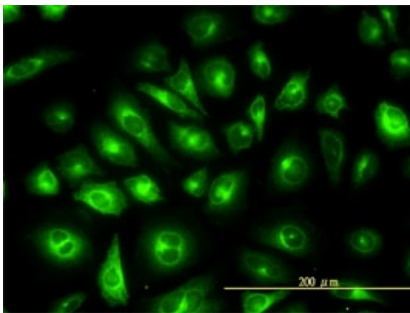
Belongs to the intermediate filament family.

画像



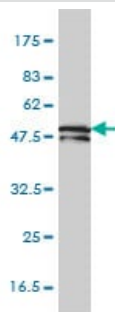
Immunohistochemistry (Formalin/PFA-fixed paraffin-embedded sections) - Anti-KRT81 antibody [3B10-5B10] (ab55407)

KRT81 antibody (ab55407) used in immunohistochemistry at 3ug/ml on formalin fixed and paraffin embedded human esophagus. This was produced using the ascites version of the product.



Immunocytochemistry/ Immunofluorescence - Anti-KRT81 antibody [3B10-5B10] (ab55407)

KRT81 antibody (ab55407) used in immunofluorescence at 10ug/ml on HeLa cells. This was produced using the ascites version of the product.



Western blot - Anti-KRT81 antibody [3B10-5B10] (ab55407)

KRT81 antibody (ab55407) at 1ug/lane + HepG2 cell lysate at 25ug/lane. This was produced using the ascites version of the product.

Please note: All products are "FOR RESEARCH USE ONLY. NOT FOR USE IN DIAGNOSTIC PROCEDURES"

Our Abpromise to you: Quality guaranteed and expert technical support

- Replacement or refund for products not performing as stated on the datasheet
- Valid for 12 months from date of delivery
- Response to your inquiry within 24 hours
- We provide support in Chinese, English, French, German, Japanese and Spanish

- Extensive multi-media technical resources to help you
- We investigate all quality concerns to ensure our products perform to the highest standards

If the product does not perform as described on this datasheet, we will offer a refund or replacement. For full details of the Abpromise, please visit <https://www.abcam.co.jp/abpromise> or contact our technical team.

Terms and conditions

- Guarantee only valid for products bought direct from Abcam or one of our authorized distributors