


### Anti-KRT6C antibody [SP87] ab227643

リコンビナント **RabMAb**

**3 References** [画像数 21](#)

#### 製品の概要

製品名	Anti-KRT6C antibody [SP87]
製品の詳細	Rabbit monoclonal [SP87] to KRT6C
由来種	Rabbit
アプリケーション	<b>適用あり:</b> IHC-P, WB, Flow Cyt (Intra), IHC-Fr, ICC/IF
種交差性	<b>交差種:</b> Mouse, Rat, Human <b>交差が予測される動物種:</b> Cow 
免疫原	Synthetic peptide. This information is proprietary to Abcam and/or its suppliers.
ポジティブ・コントロール	WB: A431 whole cell lysate. IHC-P: Human prostate carcinoma, breast, stomach, prostate, lung squamous cell carcinoma, rectal adenocarcinoma, bladder, bladder transitional cell carcinoma, colon adenocarcinoma, and placenta tissue, rat and mouse skin Flow Cyt (Intra): A431 and HaCaT cells. ICC/IF: HaCaT cells. IHC-Fr: Rat and mouse skin tissue.
特記事項	<b>This product is FOR RESEARCH USE ONLY. For commercial use, please contact <a href="mailto:partnerships@abcam.com">partnerships@abcam.com</a>.</b>

#### 製品の特性

製品の状態	Liquid
保存方法	Shipped at 4°C. Store at +4°C short term (1-2 weeks). Upon delivery aliquot. Store at -20°C long term. Avoid freeze / thaw cycle.
バッファー	pH: 7.60 Preservative: 0.1% Sodium azide Constituents: PBS, 1% BSA
精製度	Protein A/G purified
特記事項 (精製)	Purified from TCS by protein A/G.
ポリ/モノ	モノクローナル
クローン名	SP87
アイソタイプ	IgG

## アプリケーション

The Abpromise guarantee **Abpromise保証は、次のテスト済みアプリケーションにおけるab227643の使用に適用されます**  
アプリケーションノートには、推奨の開始希釈率がありますが、適切な希釈率につきましてはご検討ください。

アプリケーション	Abreviews	特記事項
IHC-P		1/200. Boil tissue section in 10mM citrate, pH 6.0 for 10 min followed by cooling at room temperature for 20 min. Incubate with ab227643 for 10 minutes at room temperature.
WB		1/25. Predicted molecular weight: 60 kDa.
Flow Cyt (Intra)		1/100 - 1/200. Incubate with ab227643 for 30 minutes at 4°C.
IHC-Fr		1/200.
ICC/IF		1/50.

## ターゲット情報

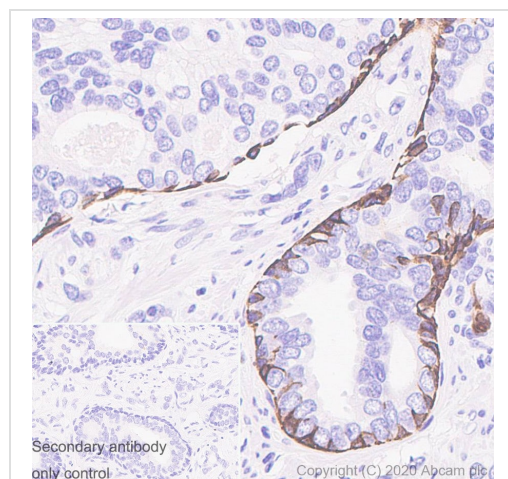
### 組織特異性

Constitutively expressed in distinct types of epithelia such as those in oral mucosa, esophagus, papillae of tongue and hair follicle outer root sheath.

### 配列類似性

Belongs to the intermediate filament family.

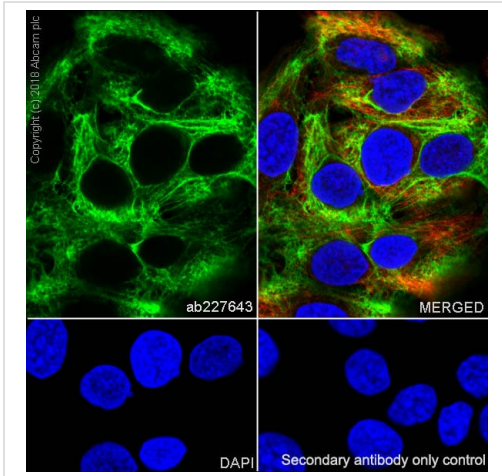
## 画像



Immunohistochemistry (Formalin/PFA-fixed paraffin-embedded sections) analysis of Human prostate carcinoma tissue sections labeling KRT6C with ab227643 at 1/200 dilution (0.12 µg/ml). Heat mediated antigen retrieval with sodium citrate buffer (pH 6.0, epitope retrieval solution 1) for 10mins. Leica DS9800 (Bond™ Polymer Refine Detection) was used as a secondary antibody. Hematoxylin was used as a counterstain. Positive staining on the human prostate carcinoma, performed on a Leica Biosystems BOND™ RX instrument.

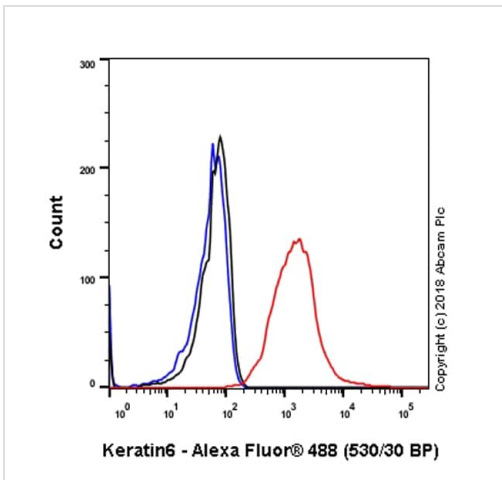
The section was incubated with ab227643 for 10 mins at room temperature.

Immunohistochemistry (Formalin/PFA-fixed paraffin-embedded sections) - Anti-KRT6C antibody [SP87] (ab227643)



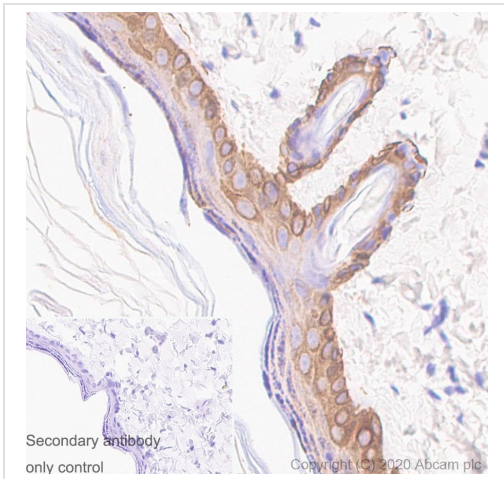
Immunocytochemistry/ Immunofluorescence - Anti-KRT6C antibody [SP87] (ab227643)

Immunocytochemistry/ Immunofluorescence analysis of HaCaT (human skin keratinocyte) cells labeling KRT6C with purified ab227643 at 1/50 (1.92 µg/ml). Cells were fixed in 100% Methanol. Cells were counterstained with **ab195889** Anti-alpha Tubulin antibody [DM1A] - Microtubule Marker (Alexa Fluor® 594) 1/200 (2.5 µg/ml). Goat anti rabbit IgG (Alexa Fluor® 488, **ab150077**) was used as the secondary antibody at 1/1000 (2 µg/ml) dilution. DAPI was used as nuclear counterstain. PBS instead of the primary antibody was used as the secondary antibody only control.



Flow Cytometry (Intracellular) - Anti-KRT6C antibody [SP87] (ab227643)

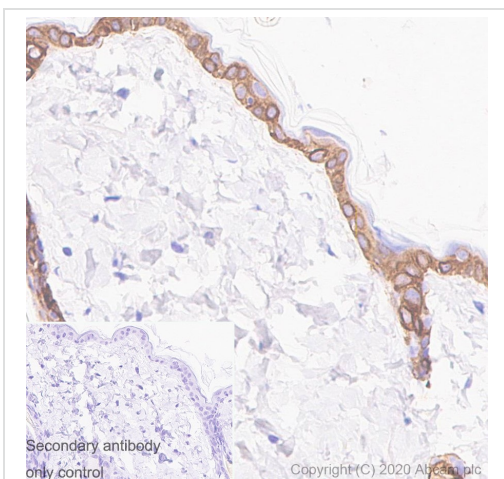
Flow cytometry analysis of HaCaT (human skin keratinocyte) labeling KRT6C with purified ab227643 at 1/200 dilution (0.48 µg/ml) (red). Cells were fixed with 4% paraformaldehyde and permeabilised with 90% methanol. Goat anti rabbit IgG (Alexa Fluor® 488, **ab150077**) at 1/2000 dilution was used as a secondary antibody. Isotype control - Rabbit monoclonal IgG (**ab172730**) (black). Unlabeled control - Unlabelled cells (blue).



Immunohistochemistry (Formalin/PFA-fixed paraffin-embedded sections) - Anti-KRT6C antibody [SP87] (ab227643)

Immunohistochemistry (Formalin/PFA-fixed paraffin-embedded sections) analysis of Rat skin tissue sections labeling KRT6C with ab227643 at 1/200 dilution (0.12 µg/ml). Heat mediated antigen retrieval with sodium citrate buffer (pH 6.0, epitope retrieval solution 1) for 10mins. Leica DS9800 (Bond™ Polymer Refine Detection) was used as a secondary antibody. Hematoxylin was used as a counterstain. Positive staining on the rat skin, performed on a Leica Biosystems BOND™ RX instrument.

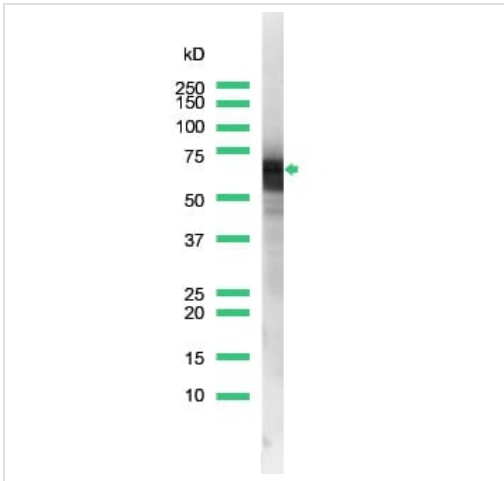
The section was incubated with ab227643 for 10 mins at room temperature.



Immunohistochemistry (Formalin/PFA-fixed paraffin-embedded sections) - Anti-KRT6C antibody [SP87] (ab227643)

Immunohistochemistry (Formalin/PFA-fixed paraffin-embedded sections) analysis of Mouse skin tissue sections labeling KRT6C with ab227643 at 1/200 dilution (0.12 µg/ml). Heat mediated antigen retrieval with sodium citrate buffer (pH 6.0, epitope retrieval solution 1) for 10mins. Leica DS9800 (Bond™ Polymer Refine Detection) was used as a secondary antibody. Hematoxylin was used as a counterstain. Positive staining on the mouse skin, performed on a Leica Biosystems BOND™ RX instrument.

The section was incubated with ab227643 for 10 mins at room temperature.

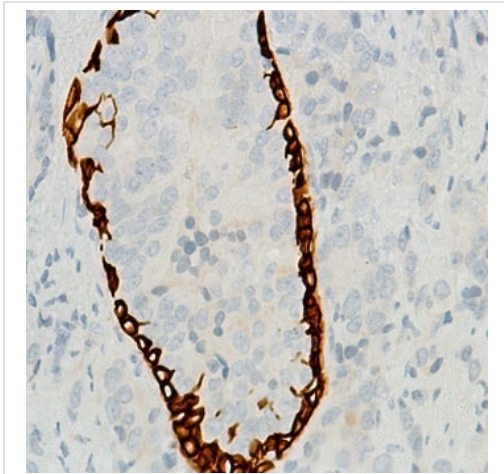


Western blot - Anti-KRT6C antibody [SP87]  
(ab227643)

Anti-KRT6C antibody [SP87] (ab227643) at 1/25 dilution + A431  
(human epidermoid carcinoma cell line) whole cell lysate

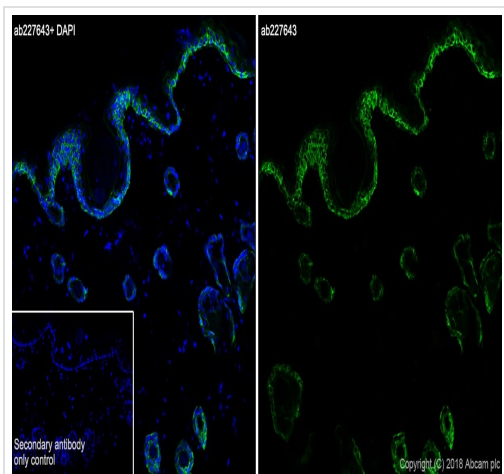
Developed using the ECL technique.

**Predicted band size:** 60 kDa



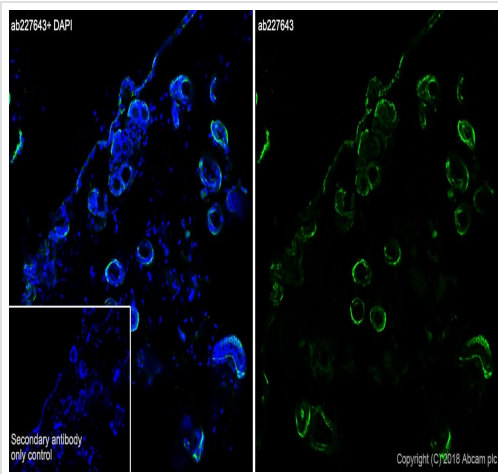
Immunohistochemistry (Formalin/PFA-fixed paraffin-  
embedded sections) - Anti-KRT6C antibody [SP87]  
(ab227643)

Formalin-fixed, paraffin-embedded human prostate carcinoma  
tissue stained for KRT6C using ab227643 at 1/200 dilution in  
immunohistochemical analysis.



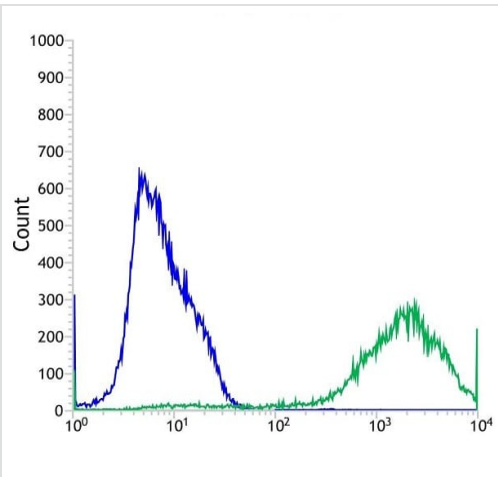
Immunohistochemistry (Frozen sections) - Anti-  
KRT6C antibody [SP87] (ab227643)

Immunohistochemistry (Frozen) analysis of rat skin tissue section  
labeling KRT6C with purified ab227643 at 1/25 (3.84µg/ml).  
Sections were fixed in 4% paraformaldehyde and permeabilized  
with 0.2% Triton X-100. Antigen retrieval was Heat mediated  
antigen retrieval using sodium citrate buffer (10mM citrate pH 6.0 +  
0.05% Tween-20). Goat anti rabbit IgG (Alexa Fluor® 488,  
**ab150077**) was used as the secondary antibody at 1/1000 (2  
µg/ml) dilution. DAPI was used as nuclear counterstain. PBS  
instead of the primary antibody was used as the secondary  
antibody only control.



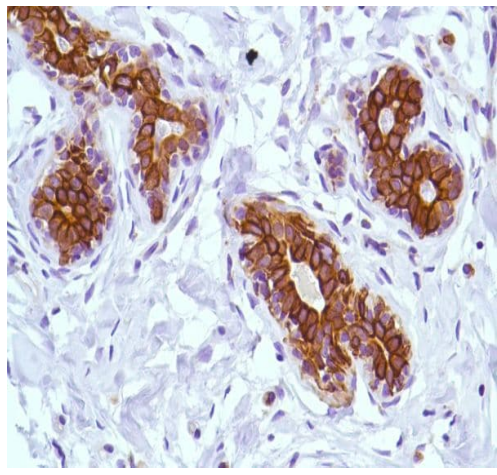
Immunohistochemistry (Frozen sections) - Anti-KRT6C antibody [SP87] (ab227643)

Immunohistochemistry (Frozen) analysis of mouse skin tissue section labeling KRT6C with purified ab227643 at 1/25 (3.84µg/ml). Sections were fixed in 4% paraformaldehyde and permeabilized with 0.2% Triton X-100. Antigen retrieval was Heat mediated antigen retrieval using sodium citrate buffer (10mM citrate pH 6.0 + 0.05% Tween-20). Goat anti rabbit IgG (Alexa Fluor® 488, **ab150077**) was used as the secondary antibody at 1/1000 (2 µg/ml) dilution. DAPI was used as nuclear counterstain. PBS instead of the primary antibody was used as the secondary antibody only control.



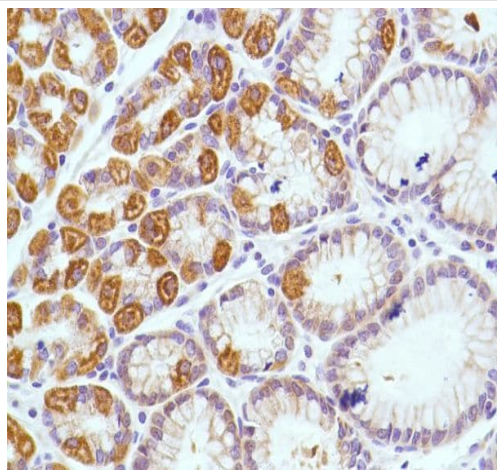
Flow Cytometry (Intracellular) - Anti-KRT6C antibody [SP87] (ab227643)

Flow cytometric analysis of A431 (human epidermoid carcinoma cell line) cell line labeling KRT6C with ab227643 at 1/100 dilution (green) compared with a negative control rabbit IgG (blue).



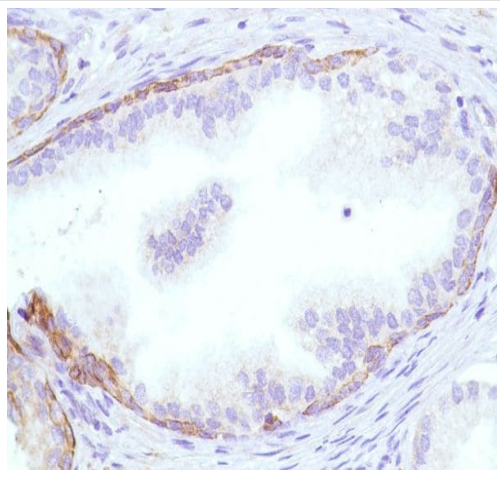
Formalin-fixed, paraffin-embedded human breast tissue stained for KRT6C using ab227643 at 1/200 dilution in immunohistochemical analysis.

Immunohistochemistry (Formalin/PFA-fixed paraffin-embedded sections) - Anti-KRT6C antibody [SP87] (ab227643)



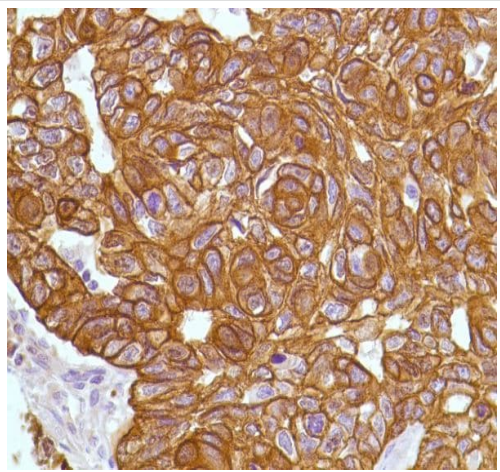
Formalin-fixed, paraffin-embedded human stomach tissue stained for KRT6C using ab227643 at 1/200 dilution in immunohistochemical analysis.

Immunohistochemistry (Formalin/PFA-fixed paraffin-embedded sections) - Anti-KRT6C antibody [SP87] (ab227643)



Immunohistochemistry (Formalin/PFA-fixed paraffin-embedded sections) - Anti-KRT6C antibody [SP87] (ab227643)

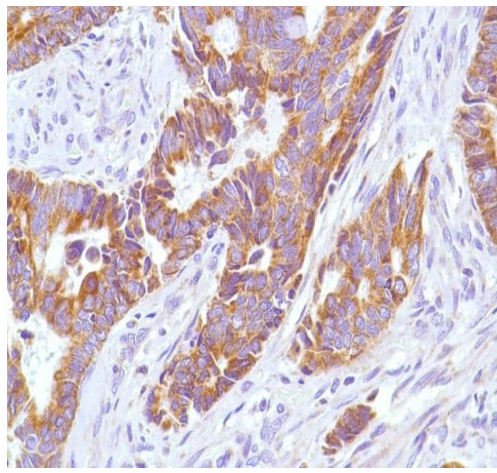
Formalin-fixed, paraffin-embedded human prostate tissue stained for KRT6C using ab227643 at 1/200 dilution in immunohistochemical analysis.



Immunohistochemistry (Formalin/PFA-fixed paraffin-embedded sections) - Anti-KRT6C antibody [SP87] (ab227643)

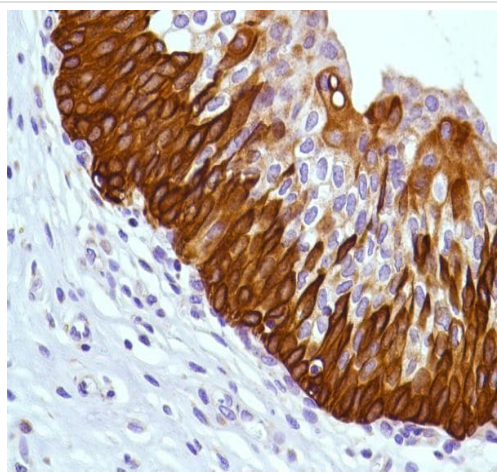
Formalin-fixed, paraffin-embedded human lung squamous cell carcinoma tissue stained for KRT6C using ab227643 at 1/200 dilution in immunohistochemical analysis.





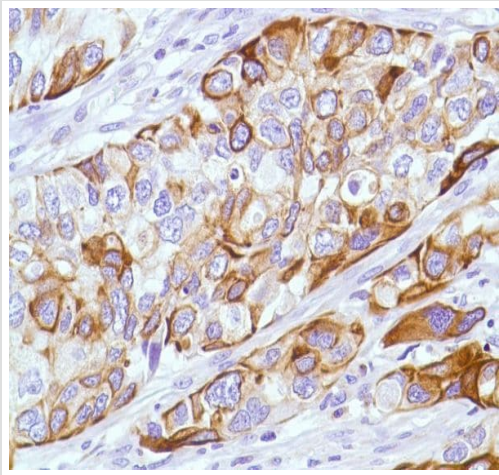
Immunohistochemistry (Formalin/PFA-fixed paraffin-embedded sections) - Anti-KRT6C antibody [SP87] (ab227643)

Formalin-fixed, paraffin-embedded human rectal adenocarcinoma tissue stained for KRT6C using ab227643 at 1/200 dilution in immunohistochemical analysis.



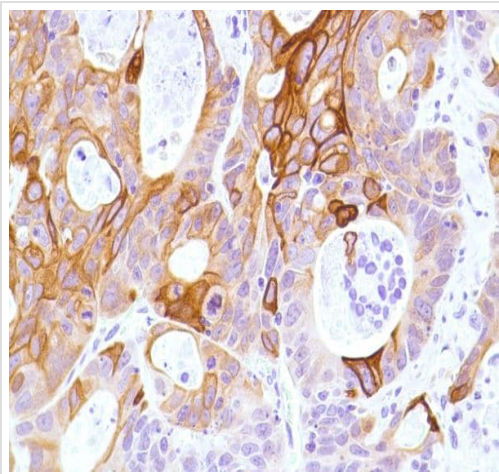
Immunohistochemistry (Formalin/PFA-fixed paraffin-embedded sections) - Anti-KRT6C antibody [SP87] (ab227643)

Formalin-fixed, paraffin-embedded human bladder tissue stained for KRT6C using ab227643 at 1/200 dilution in immunohistochemical analysis.



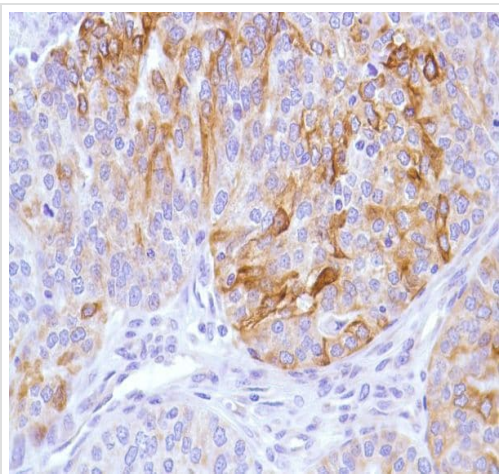
Immunohistochemistry (Formalin/PFA-fixed paraffin-embedded sections) - Anti-KRT6C antibody [SP87] (ab227643)

Formalin-fixed, paraffin-embedded human bladder transitional cell carcinoma tissue stained for KRT6C using ab227643 at 1/200 dilution in immunohistochemical analysis.



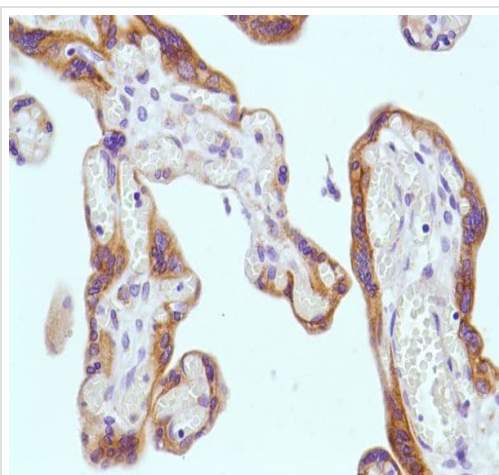
Immunohistochemistry (Formalin/PFA-fixed paraffin-embedded sections) - Anti-KRT6C antibody [SP87] (ab227643)

Formalin-fixed, paraffin-embedded human colon adenocarcinoma tissue stained for KRT6C using ab227643 at 1/200 dilution in immunohistochemical analysis.



Formalin-fixed, paraffin-embedded human ovarian adenocarcinoma tissue stained for KRT6C using ab227643 at 1/200 dilution in immunohistochemical analysis.

Immunohistochemistry (Formalin/PFA-fixed paraffin-embedded sections) - Anti-KRT6C antibody [SP87] (ab227643)



Formalin-fixed, paraffin-embedded human placenta tissue stained for KRT6C using ab227643 at 1/200 dilution in immunohistochemical analysis.

Immunohistochemistry (Formalin/PFA-fixed paraffin-embedded sections) - Anti-KRT6C antibody [SP87] (ab227643)

### Why choose a recombinant antibody?



**Research with confidence**  
Consistent and reproducible results



**Long-term and scalable supply**  
Recombinant technology



**Success from the first experiment**  
Confirmed specificity



**Ethical standards compliant**  
Animal-free production

Anti-KRT6C antibody [SP87] (ab227643)

**Please note:** All products are "FOR RESEARCH USE ONLY. NOT FOR USE IN DIAGNOSTIC PROCEDURES"

### **Our Abpromise to you: Quality guaranteed and expert technical support**

---

- Replacement or refund for products not performing as stated on the datasheet
- Valid for 12 months from date of delivery
- Response to your inquiry within 24 hours
  
- We provide support in Chinese, English, French, German, Japanese and Spanish
- Extensive multi-media technical resources to help you
- We investigate all quality concerns to ensure our products perform to the highest standards

If the product does not perform as described on this datasheet, we will offer a refund or replacement. For full details of the Abpromise, please visit <https://www.abcam.co.jp/abpromise> or contact our technical team.

### **Terms and conditions**

---

- Guarantee only valid for products bought direct from Abcam or one of our authorized distributors