




### Anti-KPNA4 antibody ab6039

★★★★★ **3 Abreviews** **20 References** 画像数 1

#### 製品の概要

製品名	Anti-KPNA4 antibody
製品の詳細	Goat polyclonal to KPNA4
由来種	Goat
アプリケーション	適用あり: WB
種交差性	交差種: Mouse, Rat, Human 交差が予測される動物種: Cow, Dog 
免疫原	Synthetic peptide corresponding to Human KPNA4 aa 500-600 (C terminal). Database link: <a href="#">NP_002259</a> <div>  <a href="#">Run BLAST with</a>  <a href="#">Run BLAST with</a> </div>
ポジティブ・コントロール	WB: Human ovary lysate. Mouse ovary and testis lysate. Rat testis lysate.
特記事項	GenBank Accession Number – NP_002259.

The nuclear import of karyophilic proteins is directed by short amino acid sequences termed nuclear localization signals (NLSs). Karyopherins, or importins, are cytoplasmic proteins that recognize NLSs and dock NLS-containing proteins to the nuclear pore complex. The protein encoded by this gene shares the sequence similarity with *Xenopus* importin-alpha and *Saccharomyces cerevisiae* Srp1. This protein is found to interact with the NLSs of DNA helicase Q1 and SV40 T antigen.

The Life Science industry has been in the grips of a reproducibility crisis for a number of years. Abcam is leading the way in addressing this with our range of recombinant monoclonal antibodies and knockout edited cell lines for gold-standard validation. Please check that this product meets your needs before purchasing.

If you have any questions, special requirements or concerns, please send us an inquiry and/or contact our Support team ahead of purchase. Recommended alternatives for this product can be found below, along with publications, customer reviews and Q&As

#### 製品の特性

製品の状態	Liquid
保存方法	Shipped at 4°C. Upon delivery aliquot and store at -20°C or -80°C. Avoid repeated freeze / thaw cycles.

バッファー	pH: 7.30 Preservative: 0.02% Sodium azide Constituents: 99% Tris buffered saline, 0.5% BSA
精製度	Immunogen affinity purified
特記事項 (精製)	Purified from goat serum by ammonium sulphate precipitation followed by antigen affinity chromatography using the immunizing peptide.
一次抗体 備考	The nuclear import of karyophilic proteins is directed by short amino acid sequences termed nuclear localization signals (NLSs). Karyopherins, or importins, are cytoplasmic proteins that recognize NLSs and dock NLS-containing proteins to the nuclear pore complex. The protein encoded by this gene shares the sequence similarity with <i>Xenopus</i> importin-alpha and <i>Saccharomyces cerevisiae</i> Srp1. This protein is found to interact with the NLSs of DNA helicase Q1 and SV40 T antigen.
ポリ/モノ	ポリクローナル
アイソタイプ	IgG

## アプリケーション

**The Abpromise guarantee**      **Abpromise保証は、次のテスト済みアプリケーションにおけるab6039の使用に適用されます**  
 アプリケーションノートには、推奨の開始希釈率がありますが、適切な希釈率につきましてはご確認ください。

アプリケーション	Abreviews	特記事項
WB	★★★★☆ (1)	Use a concentration of 0.5 - 1 µg/ml. Detects a band of approximately 55-60 kDa (predicted molecular weight: 58 kDa). A 1 hour primary incubation is recommended for this product. A customer reported that milk can significantly suppress antigen-antibody interaction on nitrocellulose membrane in WB.

## ターゲット情報

機能	Functions in nuclear protein import as an adapter protein for nuclear receptor KPNB1. Binds specifically and directly to substrates containing either a simple or bipartite NLS motif. Docking of the importin/substrate complex to the nuclear pore complex (NPC) is mediated by KPNB1 through binding to nucleoporin FxFG repeats and the complex is subsequently translocated through the pore by an energy requiring, Ran-dependent mechanism. At the nucleoplasmic side of the NPC, Ran binds to importin-beta and the three components separate and importin-alpha and -beta are re-exported from the nucleus to the cytoplasm where GTP hydrolysis releases Ran from importin. The directionality of nuclear import is thought to be conferred by an asymmetric distribution of the GTP- and GDP-bound forms of Ran between the cytoplasm and nucleus. In vitro, mediates the nuclear import of human cytomegalovirus UL84 by recognizing a non-classical NLS. In vitro, mediates the nuclear import of human cytomegalovirus UL84 by recognizing a non-classical NLS.
組織特異性	Highly expressed in testis, ovary, small intestine, heart, skeletal muscle, lung and pancreas, but barely detectable in kidney, thymus, colon and peripheral blood leukocytes.
配列類似性	Belongs to the importin alpha family. Contains 10 ARM repeats. Contains 1 IBB domain.
ドメイン	Consists of an N-terminal hydrophilic region, a hydrophobic central region composed of 10

repeats, and a short hydrophilic C-terminus. The N-terminal hydrophilic region contains the importin beta binding domain (IBB domain), which is sufficient for binding importin beta and essential for nuclear protein import.

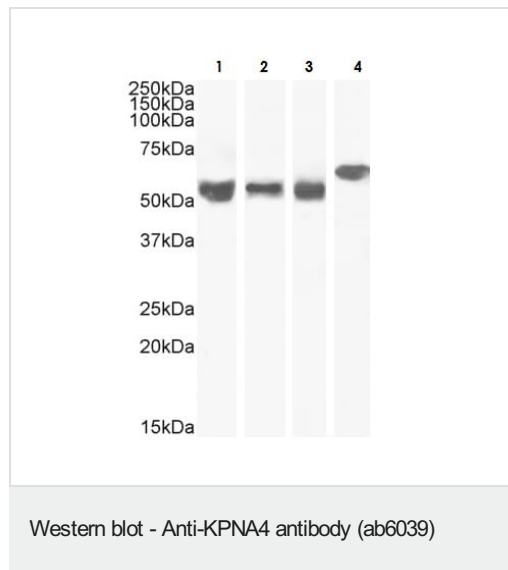
The IBB domain is thought to act as an intrasteric autoregulatory sequence by interacting with the internal autoinhibitory NLS. Binding of KPNA1 probably overlaps the internal NLS and contributes to a high affinity for cytoplasmic NLS-containing cargo substrates. After dissociation of the importin/substrate complex in the nucleus the internal autoinhibitory NLS contributes to a low affinity for nuclear NLS-containing proteins.

The major and minor NLS binding sites are mainly involved in recognition of simple or bipartite NLS motifs. Structurally located within a helical surface groove they contain several conserved Trp and Asn residues of the corresponding third helices (H3) of ARM repeats which mainly contribute to binding.

## 細胞内局在

Cytoplasm. Nucleus.

## 画像



**Lanes 1-2 :** Anti-KPNA4 antibody (ab6039) at 0.1 µg/ml

**Lane 3 :** Anti-KPNA4 antibody (ab6039) at 0.3 µg/ml

**Lane 4 :** Anti-KPNA4 antibody (ab6039) at 0.03 µg/ml

**Lane 1 :** Human ovary lysate

**Lane 2 :** Mouse testis lysate

**Lane 3 :** Mouse ovary lysate

**Lane 4 :** Rat testis lysate

Lysates/proteins at 35 µg per lane.

**Predicted band size:** 58 kDa

Lysates in RIPA buffer.

Detected by chemiluminescence.

**Please note:** All products are "FOR RESEARCH USE ONLY. NOT FOR USE IN DIAGNOSTIC PROCEDURES"

## Our Abpromise to you: Quality guaranteed and expert technical support

- Replacement or refund for products not performing as stated on the datasheet
- Valid for 12 months from date of delivery
- Response to your inquiry within 24 hours
- We provide support in Chinese, English, French, German, Japanese and Spanish
- Extensive multi-media technical resources to help you

- We investigate all quality concerns to ensure our products perform to the highest standards

If the product does not perform as described on this datasheet, we will offer a refund or replacement. For full details of the Abpromise, please visit <https://www.abcam.co.jp/abpromise> or contact our technical team.

#### **Terms and conditions**

---

- Guarantee only valid for products bought direct from Abcam or one of our authorized distributors