

Anti-KMT6 / EZH2 antibody [EPR9307] ab150433

KO 評価済 リコンビナント RabMAb

3 References 画像数 3

製品の概要

製品名	Anti-KMT6 / EZH2 antibody [EPR9307]
製品の詳細	Rabbit monoclonal [EPR9307] to KMT6 / EZH2
由来種	Rabbit
アプリケーション	適用あり: WB 適用なし: Flow Cyt, ICC/IF, IHC-P or IP
種交差性	交差種: Human
免疫原	Recombinant fragment within Human KMT6/ EZH2 aa 150-300. The exact sequence is proprietary. Database link: Q15910
ポジティブ・コントロール	Recombinant Human KMT6 / EZH2 protein (ab132934) can be used as a positive control in WB. MCF7, Jurkat and HeLa cell lysates.
特記事項	<p>This product is a recombinant monoclonal antibody, which offers several advantages including:</p> <ul style="list-style-type: none">- High batch-to-batch consistency and reproducibility- Improved sensitivity and specificity- Long-term security of supply- Animal-free production <p>For more information see here.</p> <p>Our RabMAb[®] technology is a patented hybridoma-based technology for making rabbit monoclonal antibodies. For details on our patents, please refer to RabMAb[®] patents.</p> <p>Mouse, Rat: We have preliminary internal testing data to indicate this antibody may not react with these species. Please contact us for more information.</p>

製品の特性

製品の状態	Liquid
保存方法	Shipped at 4°C. Store at -20°C.
バッファー	pH: 7.2 Preservative: 0.01% Sodium azide Constituents: 9% PBS, 40% Glycerol (glycerin, glycerine), 0.05% BSA, 50% Tissue culture supernatant

精製度	Protein A purified
ポリ/モノ	モノクローナル
クローン名	EPR9307
アイソタイプ	IgG

アプリケーション

The Abpromise guarantee Abpromise保証は、次のテスト済みアプリケーションにおけるab150433の使用に適用されず
 アプリケーションノートには、推奨の開始希釈率がありますが、適切な希釈率につきましてはご検討ください。

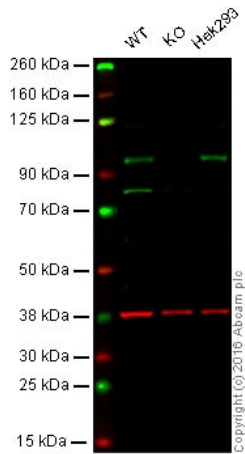
アプリケーション	Abreviews	特記事項
WB		1/1000 - 1/10000. Predicted molecular weight: 85 kDa.

追加情報 Is unsuitable for Flow Cyt, ICC/IF, IHC-P or IP.

ターゲット情報

機能	Polycomb group (PcG) protein. Catalytic subunit of the PRC2/EED-EZH2 complex, which methylates 'Lys-9' and 'Lys-27' of histone H3, leading to transcriptional repression of the affected target gene. Able to mono-, di- and trimethylate 'Lys-27' of histone H3 to form H3K27me1, H3K27me2 and H3K27me3, respectively. Compared to EZH2-containing complexes, it is more abundant in embryonic stem cells and plays a major role in forming H3K27me3, which is required for embryonic stem cell identity and proper differentiation. The PRC2/EED-EZH2 complex may also serve as a recruiting platform for DNA methyltransferases, thereby linking two epigenetic repression systems. Genes repressed by the PRC2/EED-EZH2 complex include HOXC8, HOXA9, MYT1, CDKN2A and retinoic acid target genes.
組織特異性	Expressed in many tissues. Overexpressed in numerous tumor types including carcinomas of the breast, colon, larynx, lymphoma and testis.
配列類似性	Belongs to the histone-lysine methyltransferase family. EZ subfamily. Contains 1 SET domain.
発生段階	Expression decreases during senescence of embryonic fibroblasts (HEFs). Expression peaks at the G1/S phase boundary.
翻訳後修飾	Phosphorylated by AKT1. Phosphorylation by AKT1 reduces methyltransferase activity.
細胞内局在	Nucleus.

画像



Western blot - Anti-KMT6 / EZH2 antibody [EPR9307] (ab150433)

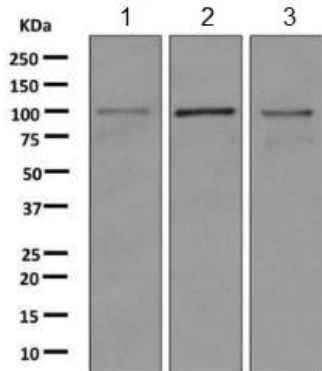
Lane 1: Wild-type HAP1 cell lysate (40 µg)

Lane 2: KMT6 / EZH2 knockout HAP1 cell lysate (40 µg)

Lane 3: HEK293 cell lysate (20 µg)

Lanes 1 - 3: Merged signal (red and green). Green - ab150433 observed at 100 kDa. Red - loading control, **ab8245**, observed at 37 kDa.

ab150433 was shown to recognize KMT6 / EZH2 in wild-type HAP1 cells along with additional cross-reactive bands. No band was observed when KMT6 / EZH2 knockout samples were examined. Wild-type and KMT6 / EZH2 knockout samples were subjected to SDS-PAGE. Ab150433 and **ab8245** (loading control to GAPDH) were diluted at 1/1000 and 1/10,000 dilution respectively and incubated overnight at 4°C. Blots were developed with IRDye® 800CW Goat anti-Rabbit IgG (H + L) (**ab216773**) and IRDye® 680 Goat anti-Mouse IgG (H + L) (**ab216776**) secondary antibodies at 1/10,000 dilution for 1 hour at room temperature before imaging.



Western blot - Anti-KMT6 / EZH2 antibody [EPR9307] (ab150433)

All lanes : Anti-KMT6 / EZH2 antibody [EPR9307] (ab150433) at 1/1000 dilution

Lane 1 : MCF7 cell lysate

Lane 2 : Jurkat cell lysate

Lane 3 : HeLa cell lysate

Lysates/proteins at 10 µg per lane.

Secondary

All lanes : Goat anti-rabbit HRP at 1/2000 dilution

Predicted band size: 85 kDa

Why choose a recombinant antibody?



Research with confidence
Consistent and reproducible results



Long-term and scalable supply
Recombinant technology



Success from the first experiment
Confirmed specificity



Ethical standards compliant
Animal-free production

Anti-KMT6 / EZH2 antibody [EPR9307] (ab150433)

Please note: All products are "FOR RESEARCH USE ONLY. NOT FOR USE IN DIAGNOSTIC PROCEDURES"

Our Abpromise to you: Quality guaranteed and expert technical support

- Replacement or refund for products not performing as stated on the datasheet
- Valid for 12 months from date of delivery
- Response to your inquiry within 24 hours
- We provide support in Chinese, English, French, German, Japanese and Spanish
- Extensive multi-media technical resources to help you
- We investigate all quality concerns to ensure our products perform to the highest standards

If the product does not perform as described on this datasheet, we will offer a refund or replacement. For full details of the Abpromise, please visit <https://www.abcam.co.jp/abpromise> or contact our technical team.

Terms and conditions

- Guarantee only valid for products bought direct from Abcam or one of our authorized distributors