

Anti-KMT4 / Dot1L antibody ab72454

[15 References](#) [画像数 3](#)

製品の概要

製品名	Anti-KMT4 / Dot1L antibody
製品の詳細	Rabbit polyclonal to KMT4 / Dot1L
由来種	Rabbit
アプリケーション	適用あり: IHC-P, WB, IP
種交差性	交差種: Human
免疫原	Synthetic peptide within Human KMT4/ Dot1L aa 1000-1100. The exact immunogen sequence used to generate this antibody is proprietary information. If additional detail on the immunogen is needed to determine the suitability of the antibody for your needs, please contact our Scientific Support team to discuss your requirements. Database link: Q8TEK3
ポジティブ・コントロール	WB: HeLa whole cell lysate. IP: HeLa whole cell lysate. IHC-P: Human lung carcinoma tissue.
特記事項	<p>The Life Science industry has been in the grips of a reproducibility crisis for a number of years. Abcam is leading the way in addressing this with our range of recombinant monoclonal antibodies and knockout edited cell lines for gold-standard validation. Please check that this product meets your needs before purchasing.</p> <p>If you have any questions, special requirements or concerns, please send us an inquiry and/or contact our Support team ahead of purchase. Recommended alternatives for this product can be found below, along with publications, customer reviews and Q&As</p>

製品の特性

製品の状態	Liquid
保存方法	Shipped at 4°C. Upon delivery aliquot and store at -20°C. Avoid freeze / thaw cycles.
バッファー	pH: 6.8 Preservative: 0.09% Sodium azide Constituents: 0.1% BSA, Tris buffered saline
精製度	Immunogen affinity purified
ポリ/モノ	ポリクローナル
アイソタイプ	IgG

アプリケーション

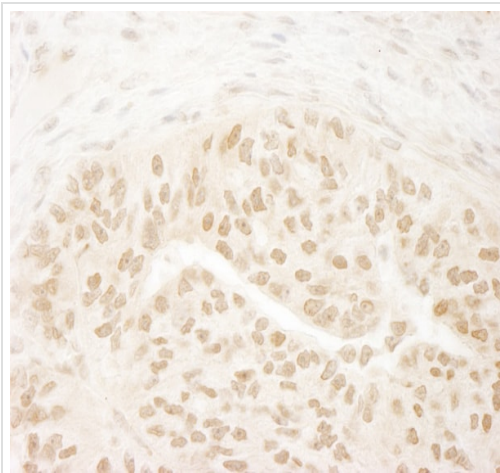
The Abpromise guarantee Abpromise保証は、次のテスト済みアプリケーションにおけるab72454の使用に適用されます
アプリケーションノートには、推奨の開始希釈率がありますが、適切な希釈率につきましてはご検討ください。

アプリケーション	Abreviews	特記事項
IHC-P		1/200 - 1/1000. Perform heat mediated antigen retrieval with Tris/EDTA buffer pH 9.0 before commencing with IHC staining protocol.
WB		1/2000 - 1/10000. Detects a band of approximately 185 kDa (predicted molecular weight: 185 kDa).
IP		Use at 2-5 µg/mg of lysate.

ターゲット情報

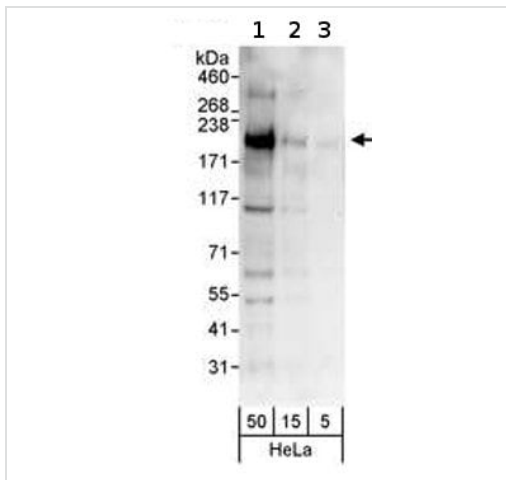
機能	Histone methyltransferase. Methylates 'Lys-79' of histone H3. Nucleosomes are preferred as substrate compared to free histones. Binds to DNA.
配列類似性	Belongs to the class I-like SAM-binding methyltransferase superfamily. DOT1 family. Contains 1 DOT1 domain.
細胞内局在	Nucleus.

画像



Immunohistochemistry (Formalin/PFA-fixed paraffin-embedded sections) analysis of human lung carcinoma tissue labelling KMT4 / Dot1L with ab72454 at 1/200 (1µg/ml). Detection: DAB.

Immunohistochemistry (Formalin/PFA-fixed paraffin-embedded sections) - Anti-KMT4 / Dot1L antibody (ab72454)



Western blot - Anti-KMT4 / Dot1L antibody
(ab72454)

All lanes : Anti-KMT4 / Dot1L antibody (ab72454) at 0.04 µg/ml

Lane 1 : HeLa whole cell lysate at 50 µg

Lane 2 : HeLa whole cell lysate at 15 µg

Lane 3 : HeLa whole cell lysate at 5 µg

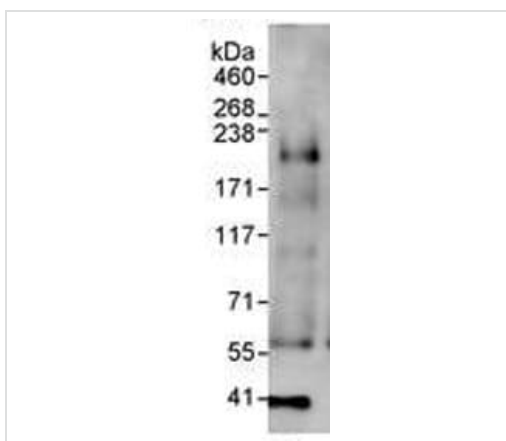
Developed using the ECL technique.

Predicted band size: 185 kDa

Observed band size: 185 kDa

Additional bands at: 100 kDa. We are unsure as to the identity of these extra bands.

Exposure time: 3 minutes



Immunoprecipitation - Anti-KMT4 / Dot1L antibody
(ab72454)

HeLa whole cell lysate (1 mg for IP, 20% of IP loaded) with ab72454 at 3 µg/mg lysate for IP, followed by ab72454 at 1 µg/ml for WB.

Detection: Chemiluminescence with an exposure time of 10 seconds.

Please note: All products are "FOR RESEARCH USE ONLY. NOT FOR USE IN DIAGNOSTIC PROCEDURES"

Our Abpromise to you: Quality guaranteed and expert technical support

- Replacement or refund for products not performing as stated on the datasheet
- Valid for 12 months from date of delivery
- Response to your inquiry within 24 hours
- We provide support in Chinese, English, French, German, Japanese and Spanish
- Extensive multi-media technical resources to help you

- We investigate all quality concerns to ensure our products perform to the highest standards

If the product does not perform as described on this datasheet, we will offer a refund or replacement. For full details of the Abpromise, please visit <https://www.abcam.co.jp/abpromise> or contact our technical team.

Terms and conditions

- Guarantee only valid for products bought direct from Abcam or one of our authorized distributors