


Anti-KMT1E / SETDB1 antibody ab12317

★★★★★ **4 Abreviews** **27 References** 画像数 1

製品の概要

製品名	Anti-KMT1E / SETDB1 antibody
製品の詳細	Rabbit polyclonal to KMT1E / SETDB1
由来種	Rabbit
アプリケーション	適用あり: WB
種交差性	交差種: Human 交差が予測される動物種: Mouse, Chimpanzee, Rhesus monkey, Gorilla, Orangutan 
免疫原	Synthetic peptide within Human KMT1E/ SETDB1 aa 1100-1200. The exact immunogen sequence used to generate this antibody is proprietary information. If additional detail on the immunogen is needed to determine the suitability of the antibody for your needs, please contact our Scientific Support team to discuss your requirements. Database link: Q15047
ポジティブ・コントロール	WB: HeLa and HEK293T whole cell lysates.
特記事項	<p>The Life Science industry has been in the grips of a reproducibility crisis for a number of years. Abcam is leading the way in addressing this with our range of recombinant monoclonal antibodies and knockout edited cell lines for gold-standard validation. Please check that this product meets your needs before purchasing.</p> <p>If you have any questions, special requirements or concerns, please send us an inquiry and/or contact our Support team ahead of purchase. Recommended alternatives for this product can be found below, along with publications, customer reviews and Q&As</p>

製品の特性

製品の状態	Liquid
保存方法	Shipped at 4°C. Store at +4°C short term (1-2 weeks). Upon delivery aliquot. Store at -20°C. Avoid freeze / thaw cycle.
バッファー	pH: 7 Preservative: 0.1% Sodium azide Constituents: 0.021% PBS, 1.764% Sodium citrate, 1.815% Tris
精製度	Immunogen affinity purified
特記事項(精製)	Purified using the peptide immobilized on solid support.
ポリ/モノ	ポリクローナル

アプリケーション

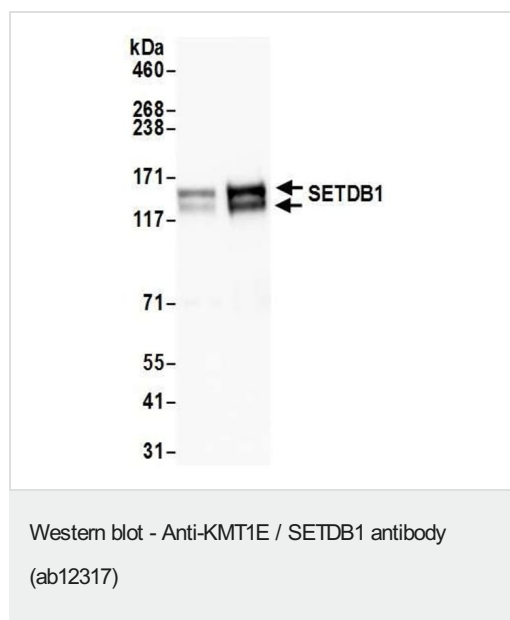
The Abpromise guarantee Abpromise保証は、次のテスト済みアプリケーションにおけるab12317の使用に適用されます
 アプリケーションノートには、推奨の開始希釈率がありますが、適切な希釈率につきましてはご検討ください。

アプリケーション	Abreviews	特記事項
WB		1/1000 - 1/10000. Predicted molecular weight: 155 kDa.

ターゲット情報

機能	Histone methyltransferase that specifically trimethylates 'Lys-9' of histone H3. H3 'Lys-9' trimethylation represents a specific tag for epigenetic transcriptional repression by recruiting HP1 (CBX1, CBX3 and/or CBX5) proteins to methylated histones. Mainly functions in euchromatin regions, thereby playing a central role in the silencing of euchromatic genes. H3 'Lys-9' trimethylation is coordinated with DNA methylation. Probably forms a complex with MBD1 and ATF7IP that represses transcription and couples DNA methylation and histone 'Lys-9' trimethylation. Its activity is dependent on MBD1 and is heritably maintained through DNA replication by being recruited by CAF-1. SETDB1 is targeted to histone H3 by TRIM28/TIF1B, a factor recruited by KRAB zinc-finger proteins.
組織特異性	Widely expressed. High expression in testis.
配列類似性	Belongs to the histone-lysine methyltransferase family. Suvar3-9 subfamily. Contains 1 MBD (methyl-CpG-binding) domain. Contains 1 post-SET domain. Contains 1 pre-SET domain. Contains 1 SET domain. Contains 2 Tudor domains.
ドメイン	The pre-SET, SET and post-SET domains are all required for methyltransferase activity. The 347-amino-acid insertion in the SET domain has no effect on the catalytic activity. Isoform 2 lacks all domains required for histone methyltransferase activity.
細胞内局在	Nucleus. Chromosome. Associated with non-pericentromeric regions of chromatin. Excluded from nucleoli and islands of condensed chromatin.

画像



All lanes : Anti-KMT1E / SETDB1 antibody (ab12317) at 1 µg/ml

Lane 1 : HeLa whole cell lysate

Lane 2 : HEK293T whole cell lysate

Lysates/proteins at 50 µg per lane.

Predicted band size: 155 kDa

Please note: All products are "FOR RESEARCH USE ONLY. NOT FOR USE IN DIAGNOSTIC PROCEDURES"

Our Abpromise to you: Quality guaranteed and expert technical support

- Replacement or refund for products not performing as stated on the datasheet
- Valid for 12 months from date of delivery
- Response to your inquiry within 24 hours
- We provide support in Chinese, English, French, German, Japanese and Spanish
- Extensive multi-media technical resources to help you
- We investigate all quality concerns to ensure our products perform to the highest standards

If the product does not perform as described on this datasheet, we will offer a refund or replacement. For full details of the Abpromise, please visit <https://www.abcam.co.jp/abpromise> or contact our technical team.

Terms and conditions

- Guarantee only valid for products bought direct from Abcam or one of our authorized distributors