

Anti-KIR2DL3 + KIR2DL1 + KIR2DS2 + KIR2DL2 + KIR2DS1 antibody [EPR22492-64] ab252938

リコンビナント RabMAb

画像数 6

製品の概要

製品名	Anti-KIR2DL3 + KIR2DL1 + KIR2DS2 + KIR2DL2 + KIR2DS1 antibody [EPR22492-64]
製品の詳細	Rabbit monoclonal [EPR22492-64] to KIR2DL3 + KIR2DL1 + KIR2DS2 + KIR2DL2 + KIR2DS1
由来種	Rabbit
アプリケーション	適用あり: IHC-P, WB, Flow Cyt
種交差性	交差種: Human
免疫原	Recombinant fragment. This information is proprietary to Abcam and/or its suppliers.
ポジティブ・コントロール	WB: His-tagged human KIR2DL1 (aa1-245), His and LIF-tagged human KIR2DL2 (aa26-221), His-tagged human KIR2DL3 (aa1-245), His-tagged human KIR2DS1 (aa22-221) and His-tagged human KIR2DS2 recombinant proteins (aa22-221). Flow Cyt: Human PBMC. IHC: human endometrium, colon cancer and gastric cancer
特記事項	<p>This product is a recombinant monoclonal antibody, which offers several advantages including:</p> <ul style="list-style-type: none">- High batch-to-batch consistency and reproducibility- Improved sensitivity and specificity- Long-term security of supply- Animal-free production <p>For more information see here.</p> <p>Our RabMAb[®] technology is a patented hybridoma-based technology for making rabbit monoclonal antibodies. For details on our patents, please refer to RabMAb[®] patents.</p>

製品の特性

製品の状態	Liquid
保存方法	Shipped at 4°C. Store at +4°C short term (1-2 weeks). Upon delivery aliquot. Store at -20°C long term. Avoid freeze / thaw cycle.
バッファー	pH: 7.2 Preservative: 0.01% Sodium azide Constituents: PBS, 0.05% BSA, 40% Glycerol (glycerin, glycerine)
精製度	Protein A purified

ポリ/モノ	モノクローナル
クローン名	EPR22492-64
アイソタイプ	IgG

アプリケーション

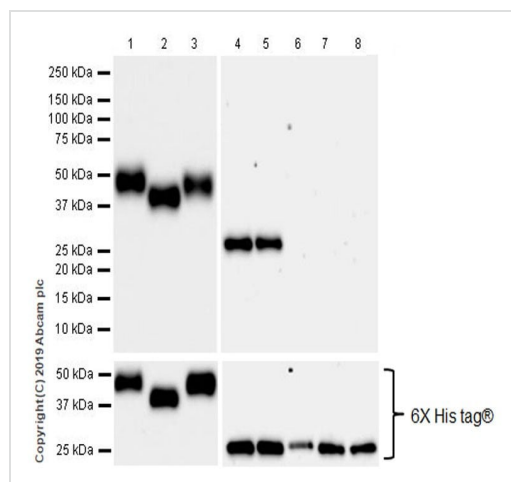
The Abpromise guarantee **Abpromise保証は、次のテスト済みアプリケーションにおけるab252938の使用に適用されます**
 アプリケーションノートには、推奨の開始希釈率がありますが、適切な希釈率につきましてはご検討ください。

アプリケーション	Abreviews	特記事項
IHC-P		1/1000. Perform heat mediated antigen retrieval with Tris/EDTA buffer pH 9.0 before commencing with IHC staining protocol.
WB		1/1000. Detects a band of approximately 39-60 kDa (predicted molecular weight: 34, 38, 39 kDa).
Flow Cyt		1/50.

ターゲット情報

細胞内局在 KIR2DL3: Cell membrane. KIR2DL1: Cell membrane. KIR2DL2: Cell membrane. KIR2DS1: Cell membrane.

画像



Western blot - Anti-KIR2DL1 antibody [EPR22492-64] (ab252938)

All lanes : Anti-KIR2DL3 + KIR2DL1 + KIR2DS2 + KIR2DL2 + KIR2DS1 antibody [EPR22492-64] (ab252938) at 1/1000 dilution

Lane 1 : His-tagged human KIR2DL1 recombinant protein (aa1-245) 20 ng

Lane 2 : His and LIF-tagged human KIR2DL2 recombinant protein (aa26-221) 20 ng

Lane 3 : His-tagged human KIR2DL3 recombinant protein (aa1-245) 20 ng

Lane 4 : His-tagged human KIR2DS1 recombinant protein (aa22-221) 20 ng

Lane 5 : His-tagged human KIR2DS2 recombinant protein (aa22-221) 20 ng

Lane 6 : His-tagged human KIR2DS3 recombinant protein (aa22-221) 20 ng

Lane 7 : His-tagged human KIR2DS4 recombinant protein (aa22-221) 20 ng

Lane 8 : His-tagged human KIR2DS5 recombinant protein (aa22-

221) 20 ng

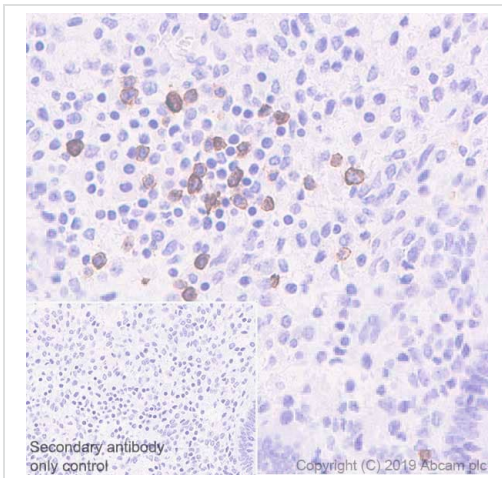
Secondary

All lanes : Goat Anti-Rabbit IgG H&L (HRP) ([ab97051](#)) at 1/100000 dilution

Predicted band size: 34, 38, 39 kDa

Blocking/Dilution buffer: 5% NFDm/TBST.

Exposure times: Lanes 1-3: 15 secs; Lanes 4-8: 3 mins.

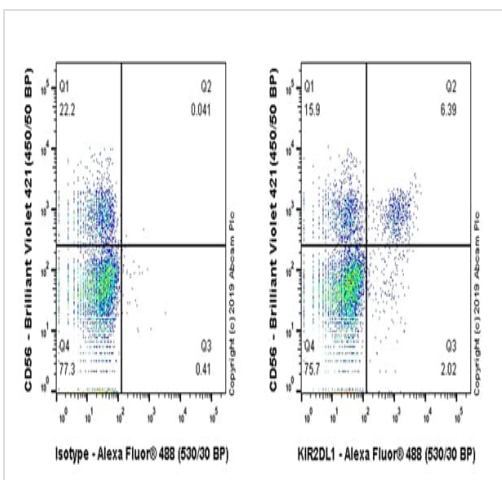


Immunohistochemical analysis of paraffin-embedded human endometrium tissue labeling KIR2DL1 with [ab252938](#) at 1/1000 dilution, followed by a ready to use Goat Anti-Rabbit IgG H&L (HRP). Positive staining in natural killer (NK) cells in human endometrium (PMID: 7749980) is observed.

Counterstained with hematoxylin. Secondary antibody only control: Used PBS instead of primary antibody, secondary antibody is a ready to use Goat Anti-Rabbit IgG H&L (HRP).

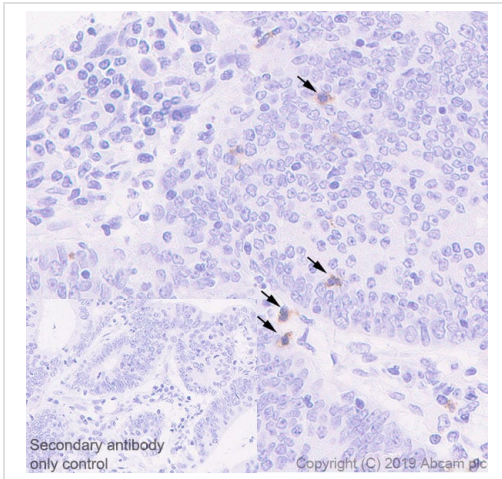
Perform heat mediated antigen retrieval using [ab93684](#) (Tris/EDTA buffer, pH 9.0).

Immunohistochemistry (Formalin/PFA-fixed paraffin-embedded sections) - Anti-KIR2DL3 + KIR2DL1 + KIR2DS2 + KIR2DL2 + KIR2DS1 antibody [EPR22492-64] ([ab252938](#))



Flow cytometric analysis of human peripheral blood mononuclear cells (PBMC) labeling KIR2DL1 with [ab252938](#) at 1/50 (right) compared with a Rabbit monoclonal IgG ([ab172730](#)) (left). Goat anti rabbit IgG (Alexa Fluor® 488, [ab150097](#)), at 1/5000 dilution was used as the secondary antibody. Cells were stained with rabbit IgG (Left) or [ab252938](#) (Right). Then stained with anti-CD56 conjugated to BV421. Gated on viable cells.

Flow Cytometry - Anti-KIR2DL1 antibody [EPR22492-64] ([ab252938](#))



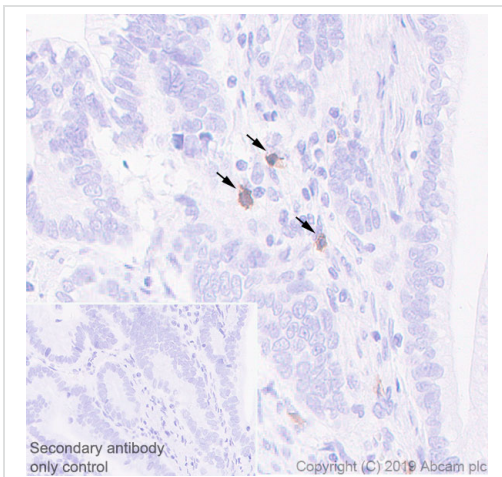
Immunohistochemistry (Formalin/PFA-fixed paraffin-embedded sections) - Anti-KIR2DL3 + KIR2DL1 + KIR2DS2 + KIR2DL2 + KIR2DS1 antibody [EPR22492-64] (ab252938)

Immunohistochemical analysis of paraffin-embedded human colon cancer tissue labeling KIR2DL1 with ab252938 at 1/1000 dilution, followed by a ready to use Goat Anti-Rabbit IgG H&L (HRP).

Positive staining in natural killer (NK) cells in human colon cancer (PMID: 7749980) is observed. Counterstained with hematoxylin.

Secondary antibody only control: Used PBS instead of primary antibody, secondary antibody is a ready to use Goat Anti-Rabbit IgG H&L (HRP).

Perform heat mediated antigen retrieval using [ab93684](#) (Tris/EDTA buffer, pH 9.0).



Immunohistochemistry (Formalin/PFA-fixed paraffin-embedded sections) - Anti-KIR2DL3 + KIR2DL1 + KIR2DS2 + KIR2DL2 + KIR2DS1 antibody [EPR22492-64] (ab252938)

Immunohistochemical analysis of paraffin-embedded human gastric cancer tissue labeling KIR2DL1 with ab252938 at 1/1000 dilution, followed by a ready to use Goat Anti-Rabbit IgG H&L (HRP).

Positive staining in natural killer (NK) cells in human gastric cancer (PMID: 7749980) is observed. Counterstained with hematoxylin.

Secondary antibody only control: Used PBS instead of primary antibody, secondary antibody is a ready to use Goat Anti-Rabbit IgG H&L (HRP).

Perform heat mediated antigen retrieval using [ab93684](#) (Tris/EDTA buffer, pH 9.0).

Why choose a recombinant antibody?



Research with confidence
Consistent and reproducible results



Long-term and scalable supply
Recombinant technology



Success from the first experiment
Confirmed specificity



Ethical standards compliant
Animal-free production

Anti-KIR2DL3 + KIR2DL1 + KIR2DS2 + KIR2DL2 + KIR2DS1 antibody [EPR22492-64] (ab252938)

Please note: All products are "FOR RESEARCH USE ONLY. NOT FOR USE IN DIAGNOSTIC PROCEDURES"

Our Abpromise to you: Quality guaranteed and expert technical support

- Replacement or refund for products not performing as stated on the datasheet
- Valid for 12 months from date of delivery
- Response to your inquiry within 24 hours
- We provide support in Chinese, English, French, German, Japanese and Spanish
- Extensive multi-media technical resources to help you
- We investigate all quality concerns to ensure our products perform to the highest standards

If the product does not perform as described on this datasheet, we will offer a refund or replacement. For full details of the Abpromise, please visit <https://www.abcam.co.jp/abpromise> or contact our technical team.

Terms and conditions

- Guarantee only valid for products bought direct from Abcam or one of our authorized distributors