

### Anti-Kininogen 1 antibody [EPR6097] ab124737

リコンビナント **RabMAb**

**3 References**    **画像数 6**

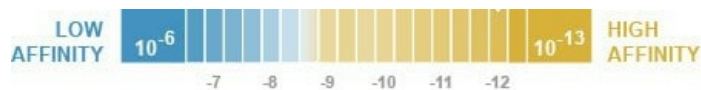
#### 製品の概要

|              |  |
|--------------|--|
| 製品名          | Anti-Kininogen 1 antibody [EPR6097]  |
| 製品の詳細        | Rabbit monoclonal [EPR6097] to Kininogen 1   |
| 由来種          | Rabbit   |
| 特異性          | This antibody detects three isoforms of Kininogen 1: full length (120 kDa), light chain (56 kDa), and cleavage form (45 kDa).  |
| アプリケーション     | <b>適用あり:</b> ELISA, WB, IP, IHC-P<br><b>適用なし:</b> Flow Cyt   |
| 種交差性         | <b>交差種:</b> Human, Recombinant fragment  |
| 免疫原          | Synthetic peptide within Human Kininogen 1 aa 600 to the C-terminus. The exact sequence is proprietary.  |
| ポジティブ・コントロール | Human plasma, platelet and ovarian cancer lysates; Human kidney tissue, Human ovarian adenocarcinoma tissue.   |
| 特記事項         | <p>This product is a recombinant monoclonal antibody, which offers several advantages including:</p> <ul style="list-style-type: none"> <li>- High batch-to-batch consistency and reproducibility</li> <li>- Improved sensitivity and specificity</li> <li>- Long-term security of supply</li> <li>- Animal-free production</li> </ul> <p>For more information <a href="#">see here</a>.</p> <p>Our RabMAb<sup>®</sup> technology is a patented hybridoma-based technology for making rabbit monoclonal antibodies. For details on our patents, please refer to <a href="#">RabMAb<sup>®</sup> patents</a>.</p> <p>Mouse, Rat: We have preliminary internal testing data to indicate this antibody may not react with these species. Please contact us for more information.</p> |

#### 製品の特性

|                         |  |
|-------------------------|--|
| 製品の状態                   | Liquid   |
| 保存方法                    | Shipped at 4°C. Store at -20°C. Stable for 12 months at -20°C. |
| 解離定数 (K <sub>D</sub> 値) | K <sub>D</sub> = 2.70 x 10 <sup>-12</sup> M                    |





[Learn more about K<sub>D</sub>](#)

|        |   |
|--------|---|
| バッファー  | pH: 7.20<br>Preservative: 0.01% Sodium azide<br>Constituents: 59% PBS, 40% Glycerol (glycerin, glycerine), 0.5% BSA |
| 精製度    | Protein A purified  |
| ポリ/モノ  | モノクローナル   |
| クローン名  | EPR6097   |
| アイソタイプ | IgG   |

## アプリケーション

**The Abpromise guarantee**      **Abpromise保証は、**次のテスト済みアプリケーションにおけるab124737の使用に適用されます  
アプリケーションノートには、推奨の開始希釈率がありますが、適切な希釈率につきましてはご検討ください。

| アプリケーション | Abreviews | 特記事項  |
|----------|-----------|---|
| ELISA    |           | Use at an assay dependent concentration.  |
| WB       |           | 1/10000 - 1/50000. Detects a band of approximately 45, 56, 120 kDa (predicted molecular weight: 48, 72 kDa).  |
| IP       |           | 1/10 - 1/100.   |
| IHC-P    |           | 1/100 - 1/250. Perform heat mediated antigen retrieval before commencing with IHC staining protocol.<br>Heat up to 98 degrees C, below boiling, and then let cool for 10-20 min |

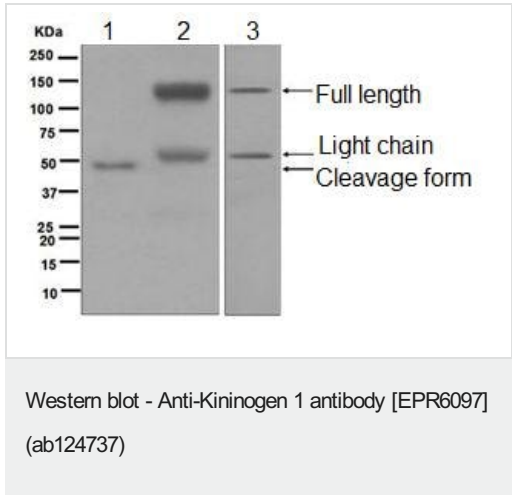
**追加情報**      Is unsuitable for Flow Cyt.

## ターゲット情報

|       |  |
|-------|--|
| 機能    | (1) Kininogens are inhibitors of thiol proteases; (2) HMW-kininogen plays an important role in blood coagulation by helping to position optimally prekallikrein and factor XI next to factor XII; (3) HMW-kininogen inhibits the thrombin- and plasmin-induced aggregation of thrombocytes; (4) the active peptide bradykinin that is released from HMW-kininogen shows a variety of physiological effects: (4A) influence in smooth muscle contraction, (4B) induction of hypotension, (4C) natriuresis and diuresis, (4D) decrease in blood glucose level, (4E) it is a mediator of inflammation and causes (4E1) increase in vascular permeability, (4E2) stimulation of nociceptors (4E3) release of other mediators of inflammation (e.g. prostaglandins), (4F) it has a cardioprotective effect (directly via bradykinin action, indirectly via endothelium-derived relaxing factor action); (5) LMW-kininogen inhibits the aggregation of thrombocytes; (6) LMW-kininogen is in contrast to HMW-kininogen not involved in blood clotting. |
| 組織特異性 | Secreted in plasma. T-kinin is detected in malignant ovarian, colon and breast carcinomas, but not in benign tumors.   |

|       |  |
|-------|--|
| 関連疾患  | Defects in KNG1 are the cause of high molecular weight kininogen deficiency (HMWK deficiency) [MIM:228960]. HMWK deficiency is an autosomal recessive coagulation defect. Patients with HMWK deficiency do not have a hemorrhagic tendency, but they exhibit abnormal surface-mediated activation of fibrinolysis. |
| 配列類似性 | Contains 3 cystatin domains.   |
| 翻訳後修飾 | Bradykinin is released from kininogen by plasma kallikrein.<br>Hydroxylation of Pro-383 occurs prior to the release of bradykinin.<br>Phosphorylation sites are present in the extracellular medium.<br>N- and O-glycosylated. O-glycosylated with core 1 or possibly core 8 glycans.                              |
| 細胞内局在 | Secreted > extracellular space.  |

画像



**All lanes :** Anti-Kininogen 1 antibody [EPR6097] (ab124737) at 1/10000 dilution

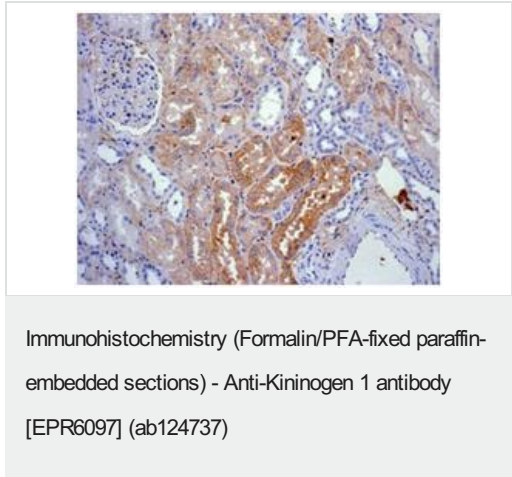
- Lane 1 :** Human plasma
- Lane 2 :** Human platelet tissue lysate
- Lane 3 :** Human ovarian cancer tissue lysate

Lysates/proteins at 10 µg per lane.

**Secondary**  
**All lanes :** Goat anti-rabbit HRP conjugated at 1/2000 dilution

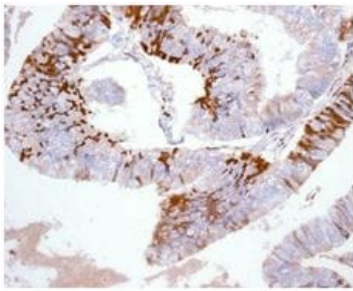
**Predicted band size:** 48, 72 kDa

ab124737 is detecting three isoforms of Kininogen 1: full length (120 kDa), light chain (56 kDa), and cleavage form (45 kDa).



ab124737 at 1/100 dilution staining Kininogen 1 in paraffin-embedded Human kidney tissues by Immunohistochemistry.

Perform heat mediated antigen retrieval before commencing with IHC staining protocol.

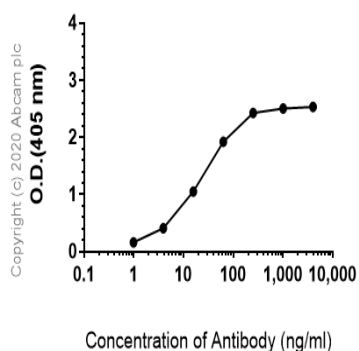


Immunohistochemistry (Formalin/PFA-fixed paraffin-embedded sections) - Anti-Kininogen 1 antibody [EPR6097] (ab124737)

ab124737 at 1/100 dilution staining Kininogen 1 in paraffin-embedded Human ovarian adenocarcinoma tissue by Immunohistochemistry.

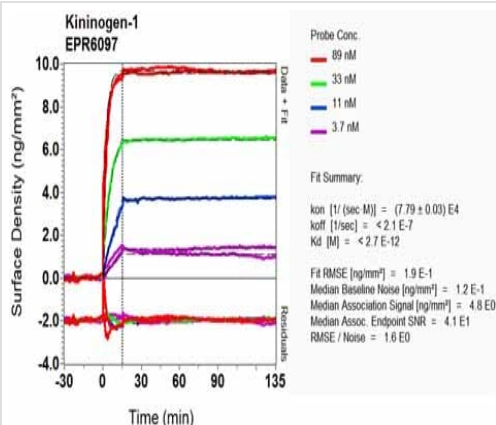
Perform heat mediated antigen retrieval before commencing with IHC staining protocol.

Indirect ELISA antibody dose-response curve antigen at 1000 ng/ml



ELISA - Anti-Kininogen 1 antibody [EPR6097] (ab124737)

ELISA analysis of Human Kininogen-1 recombinant protein at 1000 ng/mL with ab124737. An Alkaline Phosphatase-conjugated AffiniPure Goat Anti-Rabbit IgG (H+L) at 1/2500 dilution was used as the secondary antibody.



OL-RD Scanning - Anti-Kininogen 1 antibody [EPR6097] (ab124737)

Equilibrium dissociation constant ( $K_D$ )

Learn more about  $K_D$

[Click here to learn more about  \$K\_D\$](#)

### Why choose a recombinant antibody?



**Research with confidence**  
Consistent and reproducible results



**Long-term and scalable supply**  
Recombinant technology



**Success from the first experiment**  
Confirmed specificity



**Ethical standards compliant**  
Animal-free production

Anti-Kininogen 1 antibody [EPR6097] (ab124737)

**Please note:** All products are "FOR RESEARCH USE ONLY. NOT FOR USE IN DIAGNOSTIC PROCEDURES"

### Our Abpromise to you: Quality guaranteed and expert technical support

---

- Replacement or refund for products not performing as stated on the datasheet
- Valid for 12 months from date of delivery
- Response to your inquiry within 24 hours
- We provide support in Chinese, English, French, German, Japanese and Spanish
- Extensive multi-media technical resources to help you
- We investigate all quality concerns to ensure our products perform to the highest standards

If the product does not perform as described on this datasheet, we will offer a refund or replacement. For full details of the Abpromise, please visit <https://www.abcam.co.jp/abpromise> or contact our technical team.

### Terms and conditions

---

- Guarantee only valid for products bought direct from Abcam or one of our authorized distributors