

Anti-KIFC1 antibody [11445] ab172620

KO 評価済 リコンビナント RabMAb

16 References 画像数 12

製品の概要

製品名	Anti-KIFC1 antibody [11445]
製品の詳細	Rabbit monoclonal [11445] to KIFC1
由来種	Rabbit
アプリケーション	適用あり: Flow Cyt (Intra), WB, ICC/IF, IP, IHC-P
種交差性	交差種: Human
免疫原	Synthetic peptide within Human KIFC1 aa 1-100 (Cysteine residue). The exact sequence is proprietary. Database link: Q9BW19
ポジティブ・コントロール	WB: HeLa, 293T, HepG2 and HAP1 cell lysates IHC-P: Human tonsil tissue, cervical carcinoma, stomach ICC/IF: HeLa cells Flow Cyt (intra): HeLa cells IP: Jurkat whole cell lysates
特記事項	This product is a recombinant monoclonal antibody, which offers several advantages including: <ul style="list-style-type: none">- High batch-to-batch consistency and reproducibility- Improved sensitivity and specificity- Long-term security of supply- Animal-free production For more information see here . Our RabMAb [®] technology is a patented hybridoma-based technology for making rabbit monoclonal antibodies. For details on our patents, please refer to RabMAb[®] patents . Mouse, Rat: We have preliminary internal testing data to indicate this antibody may not react with these species. Please contact us for more information.

製品の特性

製品の状態	Liquid
保存方法	Shipped at 4°C. Store at +4°C short term (1-2 weeks). Upon delivery aliquot. Store at -20°C long term. Avoid freeze / thaw cycle.
バッファー	Preservative: 0.01% Sodium azide Constituents: 59% PBS, 40% Glycerol (glycerin, glycerine), 0.05% BSA
精製度	Protein A purified

ポリ/モノ	モノクローナル
クローン名	11445
アイソタイプ	IgG

アプリケーション

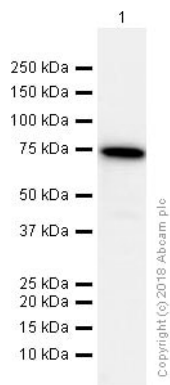
The Abpromise guarantee **Abpromise保証は、次のテスト済みアプリケーションにおけるab172620の使用に適用されず**
 アプリケーションノートには、推奨の開始希釈率がありますが、適切な希釈率につきましてはご検討ください。

アプリケーション	Abreviews	特記事項
Flow Cyt (Intra)		1/20.
WB		1/10000 - 1/50000. Predicted molecular weight: 74 kDa.
ICC/IF		1/50 - 1/100.
IP		1/10 - 1/100.
IHC-P		1/16000. Perform heat mediated antigen retrieval with Tris/EDTA buffer pH 9.0 before commencing with IHC staining protocol. For unpurified use at 1/50 - 1/100. See IHC antigen retrieval protocols .

ターゲット情報

機能	Minus end-directed microtubule-dependent motor required for bipolar spindle formation. May contribute to movement of early endocytic vesicles.
配列類似性	Belongs to the kinesin-like protein family. NCD subfamily. Contains 1 kinesin-motor domain.
細胞内局在	Nucleus. Cytoplasm > cytoskeleton > centrosome. Cytoplasm > cytoskeleton > spindle. Early endosome. Associated with nucleus during interphase, centrosomes in early and spindle in later mitosis.

画像



Western blot - Anti-KIFC1 antibody [11445]
(ab172620)

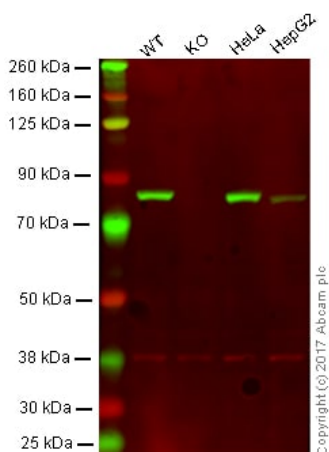
Anti-KIFC1 antibody [11445] (ab172620) at 1/50000 dilution
(Purified) + HeLa (Human cervix adenocarcinoma epithelial cell)
whole cell lysates at 15 µg

Secondary

Goat Anti-Rabbit IgG H&L (HRP) ([ab97051](#)) at 1/20000 dilution

Predicted band size: 74 kDa

Observed band size: 74 kDa



Western blot - Anti-KIFC1 antibody [11445]
(ab172620)

Lane 1: Wild-type HAP1 whole cell lysate (20 µg)

Lane 2: KIFC1 knockout HAP1 whole cell lysate (20 µg)

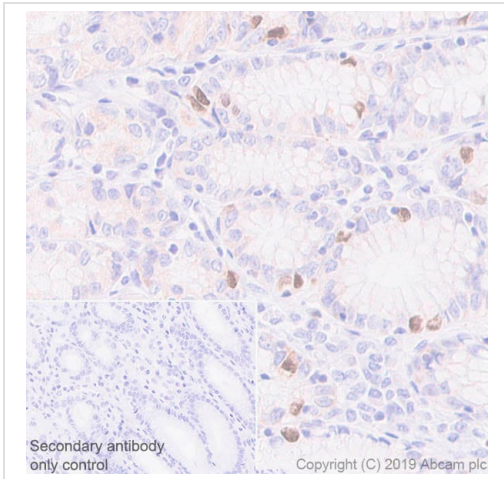
Lane 3: HeLa whole cell lysate (20 µg)

Lane 4: HepG2 whole cell lysate (20 µg)

Lanes 1 - 4: Merged signal (red and green). Green - ab172620 (purified) observed at 74 kDa. Red - loading control, [ab9484](#), observed at 37 kDa.

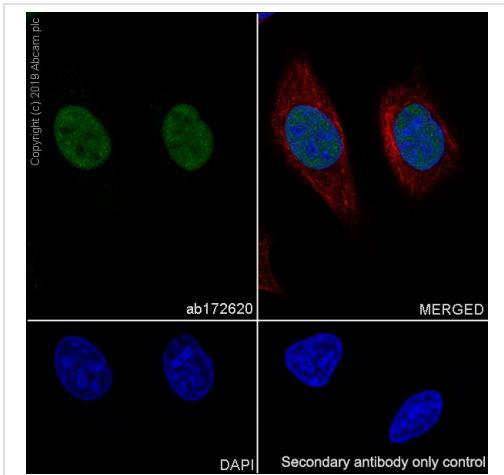
ab172620 was shown to specifically react with KIFC1 in wild-type cells as signal was lost in KIFC1 knockout cells. Wild-type and KIFC1 knockout samples were subjected to SDS-PAGE.

Ab172620 and [ab9484](#) (Mouse anti-GAPDH loading control) were incubated overnight at 4°C at 0.228 µg/ml and 1/20000 dilution respectively. Blots were developed with Goat anti-Rabbit IgG H&L (IRDye® 800CW) preabsorbed [ab216773](#) and Goat anti-Mouse IgG H&L (IRDye® 680RD) preabsorbed [ab216776](#) secondary antibodies at 1/20000 dilution for 1 hour at room temperature before imaging.



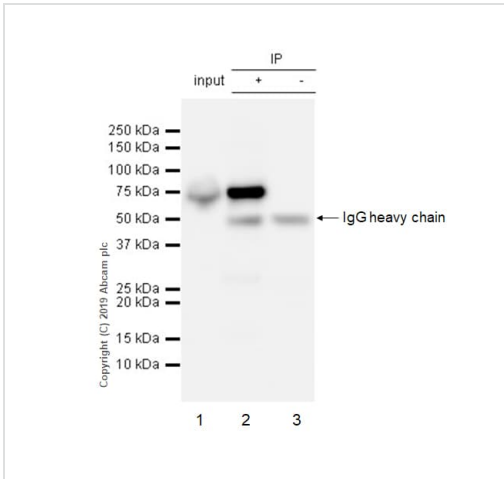
Immunohistochemistry (Formalin/PFA-fixed paraffin-embedded sections) - Anti-KIFC1 antibody [11445] (ab172620)

Immunohistochemistry (Formalin/PFA-fixed paraffin-embedded sections) analysis of Human stomach tissue sections labeling KIFC1 with purified ab172620 at 1/16000 dilution (0.01 µg/ml). Perform heat mediated antigen retrieval using **ab93684** (Tris/EDTA buffer, pH 9.0). ImmunoHistoProbe one step HRP Polymer (ready to use) was used as the secondary antibody. Negative control: PBS instead of the primary antibody. Hematoxylin was used as a counterstain.



Immunocytochemistry/ Immunofluorescence - Anti-KIFC1 antibody [11445] (ab172620)

Immunocytochemistry/ Immunofluorescence analysis of HeLa (Human cervix adenocarcinoma epithelial cell) cells labeling KIFC1 with purified ab172620 at 1/50 dilution (4.0 µg/ml). Cells were fixed in 100% Methanol. Cells were counterstained with **ab195889** Anti-alpha Tubulin antibody [DM1A] - Microtubule Marker (Alexa Fluor® 594) at 1/200 (2.5 µg/ml) dilution. Goat anti rabbit IgG (Alexa Fluor® 488, **ab150077**) was used as the secondary antibody at 1/1000 (2 µg/ml) dilution. DAPI (blue) was used as nuclear counterstain. PBS instead of the primary antibody was used as the secondary antibody only control.



Immunoprecipitation - Anti-KIFC1 antibody [11445]
(ab172620)

ab172620 (purified) at 1/20 dilution (1ug) immunoprecipitating KIFC1 in Jurkat whole cell lysates.

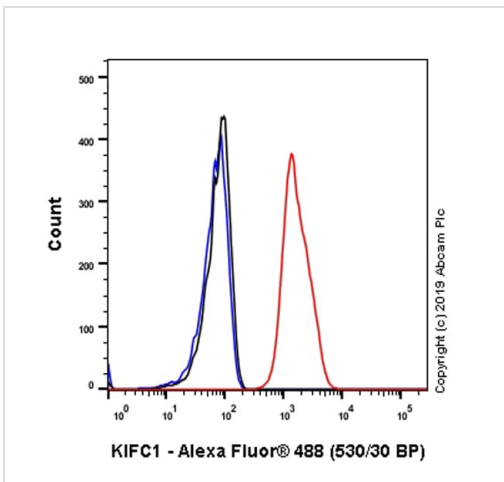
Lane 1: Jurkat (Human T cell leukemia T lymphocyte) whole cell lysates 10ug

Lane 2 (+): ab172620 & Jurkat whole cell lysates

Lane 3 (-): Rabbit monoclonal IgG (**ab172730**) instead of ab172620 in Jurkat whole cell lysates

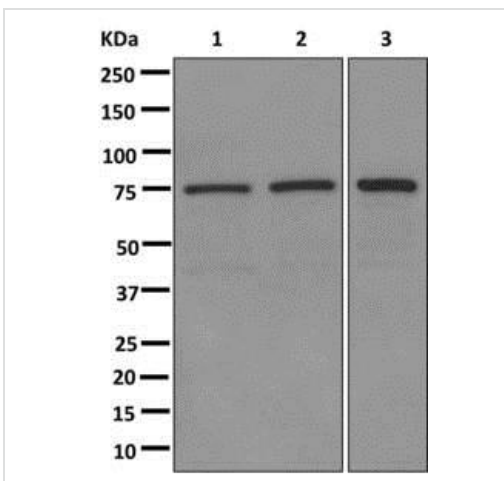
For western blotting, VeriBlot for IP Detection Reagent (HRP) (**ab131366**) was used at 1/1000 dilution.

Blocking and diluting buffer: 5% NFD/MTBST.



Flow Cytometry (Intracellular) - Anti-KIFC1 antibody [11445] (ab172620)

Intracellular Flow Cytometry analysis of HeLa (Human cervix adenocarcinoma epithelial cell) cells labeling KIFC1 with purified ab172620 at 1/20 dilution (10µg/ml) (red). Cells were fixed with 4% Paraformaldehyde and permeabilised with 90% Methanol. A Goat anti rabbit IgG (Alexa Fluor® 488, **ab150077**) secondary antibody was used at 1/2000. Isotype control - Rabbit monoclonal IgG (Black). Unlabeled control - Cell without incubation with primary antibody and secondary antibody (Blue).



Western blot - Anti-KIFC1 antibody [11445]
(ab172620)

All lanes : Anti-KIFC1 antibody [11445] (ab172620) at 1/10000 dilution ((unpurified))

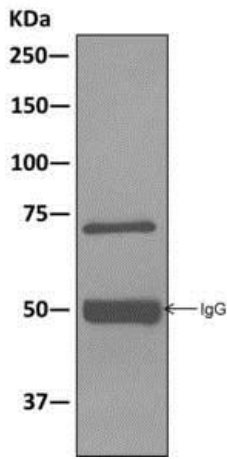
Lane 1 : HeLa lysate

Lane 2 : 293T lysate

Lane 3 : HepG2 lysate

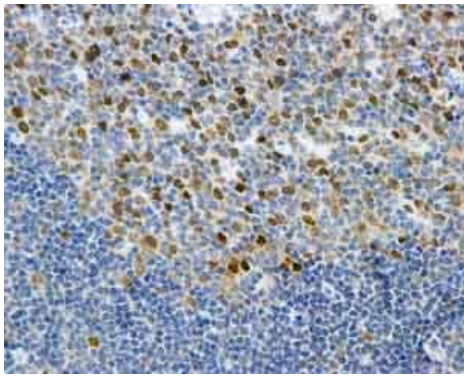
Lysates/proteins at 10 µg per lane.

Predicted band size: 74 kDa



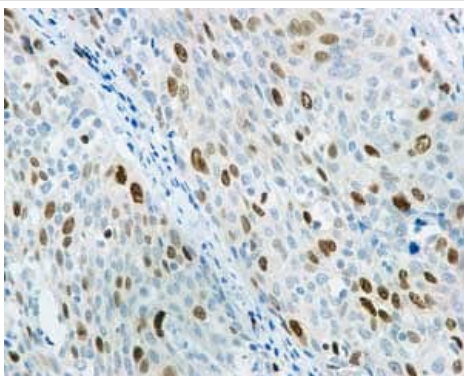
Western blot - Anti-KIFC1 antibody [11445]
(ab172620)

Western blot analysis on immunoprecipitation pellet from 293T cell lysate, labeling KIFC1 with ab172620 (unpurified) at 1/10 dilution.



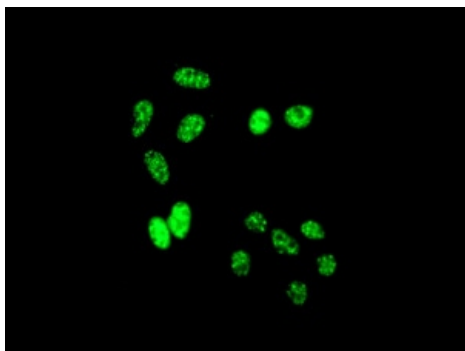
Immunohistochemistry (Formalin/PFA-fixed paraffin-embedded sections) - Anti-KIFC1 antibody [11445]
(ab172620)

Immunohistochemical analysis of paraffin-embedded Human tonsil tissue labeling KIFC1 with ab172620 (unpurified) at 1/50 dilution.



Immunohistochemistry (Formalin/PFA-fixed paraffin-embedded sections) - Anti-KIFC1 antibody [11445]
(ab172620)

Immunohistochemical analysis of paraffin-embedded Human cervical carcinoma tissue labeling KIFC1 with ab172620 (unpurified) at 1/50 dilution.



Immunofluorescent staining of HeLa cells labeling KIFC1 with ab172620 (unpurified) at 1/50 dilution.

Immunocytochemistry/ Immunofluorescence - Anti-KIFC1 antibody [11445] (ab172620)

Why choose a recombinant antibody?



Research with confidence
Consistent and reproducible results



Long-term and scalable supply
Recombinant technology



Success from the first experiment
Confirmed specificity



Ethical standards compliant
Animal-free production

Anti-KIFC1 antibody [11445] (ab172620)

Please note: All products are "FOR RESEARCH USE ONLY. NOT FOR USE IN DIAGNOSTIC PROCEDURES"

Our Abpromise to you: Quality guaranteed and expert technical support

- Replacement or refund for products not performing as stated on the datasheet
- Valid for 12 months from date of delivery
- Response to your inquiry within 24 hours
- We provide support in Chinese, English, French, German, Japanese and Spanish
- Extensive multi-media technical resources to help you
- We investigate all quality concerns to ensure our products perform to the highest standards

If the product does not perform as described on this datasheet, we will offer a refund or replacement. For full details of the Abpromise, please visit <https://www.abcam.co.jp/abpromise> or contact our technical team.

Terms and conditions

- Guarantee only valid for products bought direct from Abcam or one of our authorized distributors