


Anti-KIF4A/KIF4 antibody [EPR5459] - BSA and Azide free ab248051

リコンビナント **RabMAb**

画像数 4

製品の概要

製品名	Anti-KIF4A/KIF4 antibody [EPR5459] - BSA and Azide free
製品の詳細	Rabbit monoclonal [EPR5459] to KIF4A/KIF4 - BSA and Azide free
由来種	Rabbit
アプリケーション	適用あり: WB, Flow Cyt (Intra) 適用なし: ICC/IF, IHC-P or IP
種交差性	交差種: Mouse, Human 交差が予測される動物種: Rat 
免疫原	Synthetic peptide. This information is proprietary to Abcam and/or its suppliers.
特記事項	<p>ab248051 is the carrier-free version of ab124903.</p> <p>Our carrier-free antibodies are typically supplied in a PBS-only formulation, purified and free of BSA, sodium azide and glycerol. The carrier-free buffer and high concentration allow for increased conjugation efficiency.</p> <p>This conjugation-ready format is designed for use with fluorochromes, metal isotopes, oligonucleotides, and enzymes, which makes them ideal for antibody labelling, functional and cell-based assays, flow-based assays (e.g. mass cytometry) and Multiplex Imaging applications.</p> <p>Use our conjugation kits for antibody conjugates that are ready-to-use in as little as 20 minutes with <1 minute hands-on-time and 100% antibody recovery: available for fluorescent dyes, HRP, biotin and gold.</p> <p>This product is compatible with the Maxpar[®] Antibody Labeling Kit from Fluidigm, without the need for antibody preparation. Maxpar[®] is a trademark of Fluidigm Canada Inc.</p> <p>This product is a recombinant monoclonal antibody, which offers several advantages including:</p> <ul style="list-style-type: none"> - High batch-to-batch consistency and reproducibility - Improved sensitivity and specificity - Long-term security of supply - Animal-free production <p>For more information see here.</p> <p>Our RabMAb[®] technology is a patented hybridoma-based technology for making rabbit monoclonal antibodies. For details on our patents, please refer to RabMAb[®] patents.</p>

製品の特長

製品の状態

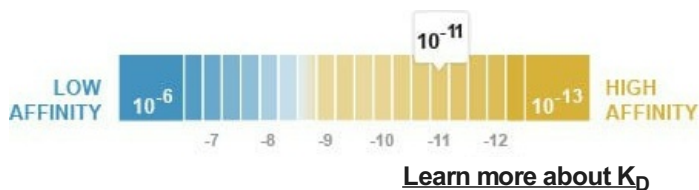
Liquid

保存方法

Shipped at 4°C. Store at +4°C. Do Not Freeze.

解離定数 (K_D 値)

K_D = 1.52 x 10⁻¹¹ M



バッファー

pH: 7.2

Constituent: PBS

キャリア・フリー

はい

精製度

Protein A purified

ポリ/モノ

モノクローナル

クローン名

EPR5459

アイソタイプ

IgG

アプリケーション

The Abpromise guarantee

Abpromise保証は、次のテスト済みアプリケーションにおけるab248051の使用に適用されます

アプリケーションノートには、推奨の開始希釈率がありますが、適切な希釈率につきましてはご確認ください。

アプリケーション	Abreviews	特記事項
WB		Use at an assay dependent concentration. Detects a band of approximately 170 kDa (predicted molecular weight: 140 kDa).
Flow Cyt (Intra)		Use at an assay dependent concentration.

追加情報

Is unsuitable for ICC/IF, IHC-P or IP.

ターゲット情報

機能

Motor protein that translocates PRC1 to the plus ends of interdigitating spindle microtubules during the metaphase to anaphase transition, an essential step for the formation of an organized central spindle midzone and midbody and for successful cytokinesis. May play a role in mitotic chromosomal positioning and bipolar spindle stabilization.

組織特異性

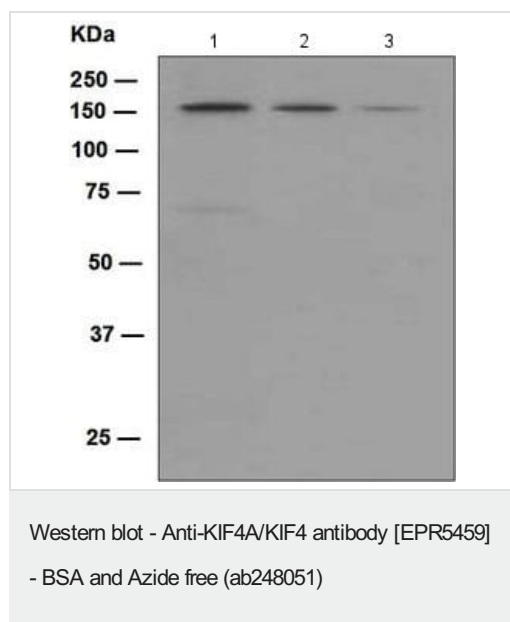
Highly expressed in hematopoietic tissues, fetal liver, spleen, thymus and adult thymus and bone marrow. Lower levels are found in heart, testis, kidney, colon and lung.

配列類似性

Belongs to the kinesin-like protein family. Chromokinesin subfamily.
Contains 1 kinesin-motor domain.

細胞内局在

Nucleus matrix. Cytoplasm > cytoskeleton > spindle. Midbody. Chromosome. Not present in the nucleolus. In early mitosis, associated with the mitotic spindle, in anaphase, localized to the spindle midzone and, in telophase and cytokinesis, to the midbody. In late cytokinesis, found in the center of the midbody. Associated with chromosomes at all stages of mitosis.



All lanes : Anti-KIF4A/KIF4 antibody [EPR5459] ([ab124903](#)) at 1/1000 dilution

Lane 1 : Mouse thymus tissue lysate

Lane 2 : HeLa cell lysate

Lane 3 : 293T (Human embryonic kidney epithelial cell) cell lysate

Lysates/proteins at 10 µg per lane.

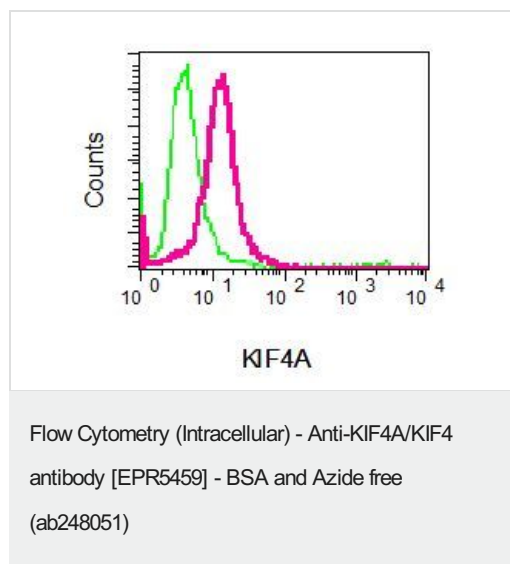
Secondary

All lanes : HRP labelled goat anti-rabbit at 1/2000 dilution

Predicted band size: 140 kDa

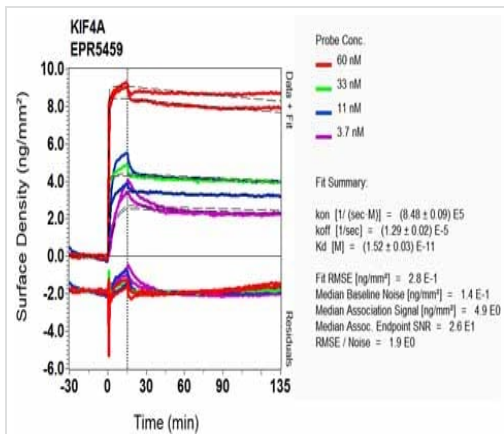
Observed band size: 170 kDa

This data was developed using [ab124903](#), the same antibody clone in a different buffer formulation.



This data was developed using [ab124903](#), the same antibody clone in a different buffer formulation.

Intracellular flow cytometric analysis of permeabilized 293 cells using [ab124903](#) at 1/10 dilution (red) or a rabbit IgG negative control (green).



SPR Scanning - Anti-KIF4A/KIF4 antibody
[EPR5459] - BSA and Azide free (ab248051)

This data was developed using [ab124903](#), the same antibody clone in a different buffer formulation. Equilibrium dissociation constant (K_D)

Learn more about K_D

[Click here to learn more about \$K_D\$](#)

Why choose a recombinant antibody?



Research with confidence
Consistent and reproducible results



Long-term and scalable supply
Recombinant technology



Success from the first experiment
Confirmed specificity



Ethical standards compliant
Animal-free production

Anti-KIF4A/KIF4 antibody [EPR5459] - BSA and Azide free (ab248051)

Please note: All products are "FOR RESEARCH USE ONLY. NOT FOR USE IN DIAGNOSTIC PROCEDURES"

Our Abpromise to you: Quality guaranteed and expert technical support

- Replacement or refund for products not performing as stated on the datasheet
- Valid for 12 months from date of delivery
- Response to your inquiry within 24 hours

- We provide support in Chinese, English, French, German, Japanese and Spanish
- Extensive multi-media technical resources to help you
- We investigate all quality concerns to ensure our products perform to the highest standards

If the product does not perform as described on this datasheet, we will offer a refund or replacement. For full details of the Abpromise, please visit <https://www.abcam.co.jp/abpromise> or contact our technical team.

Terms and conditions

- Guarantee only valid for products bought direct from Abcam or one of our authorized distributors