



Anti-KIF4A/KIF4 antibody ab122227

10 References **画像数 5**

製品の概要

製品名	Anti-KIF4A/KIF4 antibody
製品の詳細	Rabbit polyclonal to KIF4A/KIF4
由来種	Rabbit
アプリケーション	適用あり: ICC/IF, WB, IHC-P
種交差性	交差種: Human
免疫原	Recombinant fragment corresponding to Human KIF4A/KIF4 aa 994-1075. Sequence: LTLLQVASRQKHLPKDTLLSPDSSFYVPPKPKPSRVKEKFL EQSMDIED LKYCSEHSVNEHEDGDGDDDEGDDEEWKPTKL Database link: O95239 <div>  Run BLAST with  Run BLAST with </div>
ポジティブ・コントロール	WB: RT-4 and U-251 MG cell lysates IHC-P: Human bone marrow tissue ICC/IF: Human cell line U-2 OS
特記事項	<p>The Life Science industry has been in the grips of a reproducibility crisis for a number of years. Abcam is leading the way in addressing this with our range of recombinant monoclonal antibodies and knockout edited cell lines for gold-standard validation. Please check that this product meets your needs before purchasing.</p> <p>If you have any questions, special requirements or concerns, please send us an inquiry and/or contact our Support team ahead of purchase. Recommended alternatives for this product can be found below, along with publications, customer reviews and Q&As</p>

製品の特性

製品の状態	Liquid
保存方法	Shipped at 4°C. Store at +4°C short term (1-2 weeks). Upon delivery aliquot. Store at -20°C long term.
バッファー	pH: 7.20 Preservative: 0.02% Sodium azide Constituents: 59% PBS, 40% Glycerol
精製度	Immunogen affinity purified

ポリ/モノ
アイソタイプ

ポリクローナル
IgG

アプリケーション

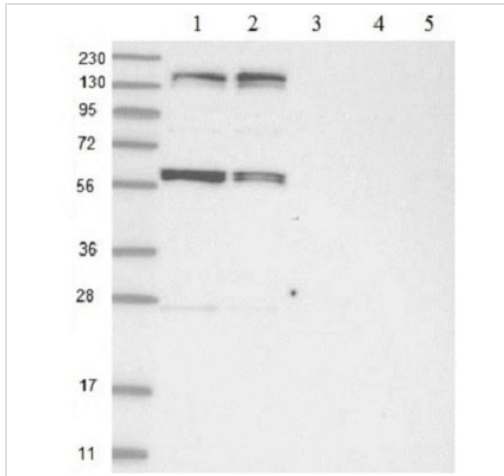
The Abpromise guarantee **Abpromise保証は、** 次のテスト済みアプリケーションにおけるab122227の使用に適用されます
アプリケーションノートには、推奨の開始希釈率がありますが、適切な希釈率につきましてはご検討ください。

アプリケーション	Abreviews	特記事項
ICC/IF		Use a concentration of 0.25 - 2 µg/ml.
WB		Use a concentration of 0.04 - 0.4 µg/ml.
IHC-P		1/200 - 1/500. Perform heat mediated antigen retrieval with citrate buffer pH 6 before commencing with IHC staining protocol.

ターゲット情報

機能	Motor protein that translocates PRC1 to the plus ends of interdigitating spindle microtubules during the metaphase to anaphase transition, an essential step for the formation of an organized central spindle midzone and midbody and for successful cytokinesis. May play a role in mitotic chromosomal positioning and bipolar spindle stabilization.
組織特異性	Highly expressed in hematopoietic tissues, fetal liver, spleen, thymus and adult thymus and bone marrow. Lower levels are found in heart, testis, kidney, colon and lung.
配列類似性	Belongs to the kinesin-like protein family. Chromokinesin subfamily. Contains 1 kinesin-motor domain.
細胞内局在	Nucleus matrix. Cytoplasm > cytoskeleton > spindle. Midbody. Chromosome. Not present in the nucleolus. In early mitosis, associated with the mitotic spindle, in anaphase, localized to the spindle midzone and, in telophase and cytokinesis, to the midbody. In late cytokinesis, found in the center of the midbody. Associated with chromosomes at all stages of mitosis.

画像



Western blot - Anti-KIF4A/KIF4 antibody (ab122227)

All lanes : Anti-KIF4A/KIF4 antibody (ab122227) at 1/250 dilution

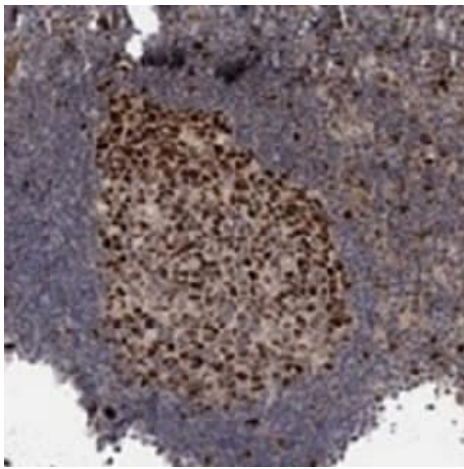
Lane 1 : RT-4 cell lysate

Lane 2 : U-251 MG cell lysate

Lane 3 : Human plasma lysate

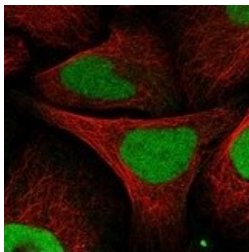
Lane 4 : Human liver lysate

Lane 5 : Human tonsil lysate



Immunohistochemistry (Formalin/PFA-fixed paraffin-embedded sections) - Anti-KIF4A/KIF4 antibody (ab122227)

ab122227, at a 1/300 dilution, staining KIF4A/KIF4 in paraffin embedded Human bone marrow tissue by Immunohistochemistry.

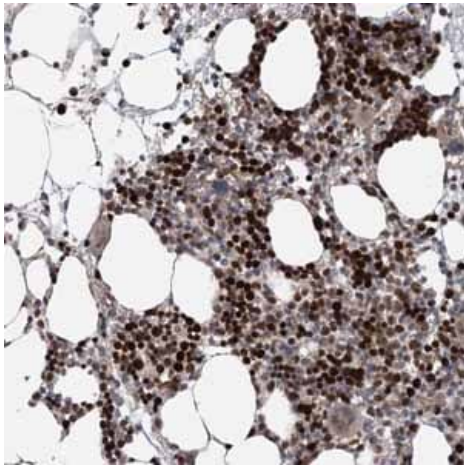


Immunocytochemistry/ Immunofluorescence - Anti-KIF4A/KIF4 antibody (ab122227)

Immunofluorescent staining of human cell line U-2 OS shows positivity in nucleus but not nucleoli using ab122227.

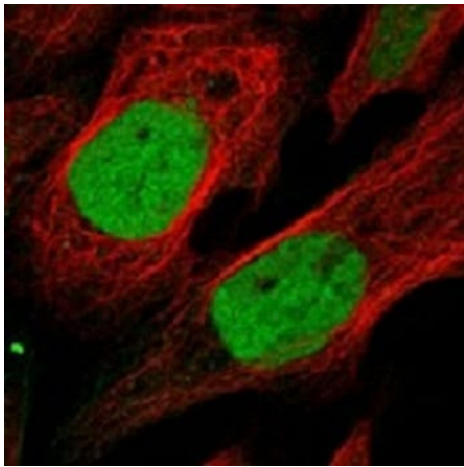
Recommended conditions:

Fixation/Permeabilization: PFA/Triton X-100



Immunohistochemical staining of Human bone marrow shows strong nuclear positivity in hematopoietic cells using ab122227

Immunohistochemistry (Formalin/PFA-fixed paraffin-embedded sections) - Anti-KIF4A/KIF4 antibody (ab122227)



ab122227, at 4 µg/ml, staining KIF4A/KIF4 in Human cell line U-2 OS by Immunofluorescence. Antibody staining is shown in green.

Immunocytochemistry/ Immunofluorescence - Anti-KIF4A/KIF4 antibody (ab122227)

Please note: All products are "FOR RESEARCH USE ONLY. NOT FOR USE IN DIAGNOSTIC PROCEDURES"

Our Abpromise to you: Quality guaranteed and expert technical support

- Replacement or refund for products not performing as stated on the datasheet
- Valid for 12 months from date of delivery
- Response to your inquiry within 24 hours
- We provide support in Chinese, English, French, German, Japanese and Spanish

- Extensive multi-media technical resources to help you
- We investigate all quality concerns to ensure our products perform to the highest standards

If the product does not perform as described on this datasheet, we will offer a refund or replacement. For full details of the Abpromise, please visit <https://www.abcam.co.jp/abpromise> or contact our technical team.

Terms and conditions

- Guarantee only valid for products bought direct from Abcam or one of our authorized distributors