

Anti-KIF22 antibody [EP2748] - BSA and Azide free ab284779

KO 評価済 RabMAb

画像数 2

製品の概要

製品名	Anti-KIF22 antibody [EP2748] - BSA and Azide free
製品の詳細	Rabbit monoclonal [EP2748] to KIF22 - BSA and Azide free
由来種	Rabbit
アプリケーション	適用あり: WB 適用なし: Flow Cyt, ICC/IF, IHC-P or IP
種交差性	交差種: Human
免疫原	Synthetic peptide. This information is proprietary to Abcam and/or its suppliers.
ポジティブ・コントロール	WB: HEK-293T, HeLa, MCF7, and SH-SY5Y cell lysates
特記事項	<p>ab284779 is the carrier-free version of ab108535</p> <p>Our carrier-free antibodies are typically supplied in a PBS-only formulation, purified and free of BSA, sodium azide and glycerol. The carrier-free buffer and high concentration allow for increased conjugation efficiency.</p> <p>This conjugation-ready format is designed for use with fluorochromes, metal isotopes, oligonucleotides, and enzymes, which makes them ideal for antibody labelling, functional and cell-based assays, flow-based assays (e.g. mass cytometry) and Multiplex Imaging applications.</p> <p>Use our conjugation kits for antibody conjugates that are ready-to-use in as little as 20 minutes with <1 minute hands-on-time and 100% antibody recovery: available for fluorescent dyes, HRP, biotin and gold.</p> <p>This product is compatible with the Maxpar[®] Antibody Labeling Kit from Fluidigm, without the need for antibody preparation. Maxpar[®] is a trademark of Fluidigm Canada Inc.</p> <p>Our RabMAb[®] technology is a patented hybridoma-based technology for making rabbit monoclonal antibodies. For details on our patents, please refer to RabMAb[®] patents.</p> <p>The Life Science industry has been in the grips of a reproducibility crisis for a number of years. Abcam is leading the way in addressing this with our range of recombinant monoclonal antibodies and knockout edited cell lines for gold-standard validation. Please check that this product meets your needs before purchasing.</p> <p>If you have any questions, special requirements or concerns, please send us an inquiry and/or contact our Support team ahead of purchase. Recommended alternatives for this product can be found below, along with publications, customer reviews and Q&As</p>

製品の特性

製品の状態	Liquid
保存方法	Shipped at 4°C. Store at +4°C.
バッファー	pH: 7.2 Constituent: 100% PBS
キャリア・フリー	はい
精製度	Tissue culture supernatant
ポリ/モノ	モノクローナル
クローン名	EP2748
アイソタイプ	IgG

アプリケーション

The Abpromise guarantee **Abpromise保証は、**次のテスト済みアプリケーションにおけるab284779の使用に適用されず
アプリケーションノートには、推奨の開始希釈率がありますが、適切な希釈率につきましてはご検討ください。

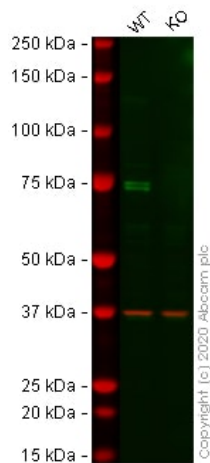
アプリケーション	Abreviews	特記事項
WB		Use at an assay dependent concentration. Predicted molecular weight: 73 kDa.

追加情報 Is unsuitable for Flow Cyt, ICC/IF, IHC-P or IP.

ターゲット情報

機能	Kinesin family that is involved in spindle formation and the movements of chromosomes during mitosis and meiosis. Binds to microtubules and to DNA.
配列類似性	Belongs to the kinesin-like protein family. Contains 1 kinesin-motor domain.
翻訳後修飾	Ubiquitinated; mediated by SIAH1 and leading to its subsequent proteasomal degradation. Phosphorylated upon DNA damage, probably by ATM or ATR.
細胞内局在	Nucleus. Cytoplasm > cytoskeleton.

画像



Western blot - Anti-KIF22 antibody [EP2748] - BSA and Azide free (ab284779)

All lanes : Anti-KIF22 antibody [EP2748] ([ab108535](#)) at 1/1000 dilution

Lane 1 : Wild-type HEK-293T (Human epithelial cell line from embryonic kidney transformed with large T antigen) whole cell lysate

Lane 2 : KIF22 knockout HEK-293T cell lysate

Lysates/proteins at 20 µg per lane.

Performed under reducing conditions.

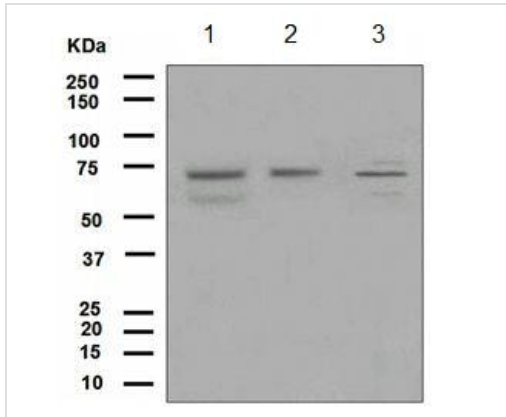
Predicted band size: 73 kDa

Observed band size: 75 kDa

This data was developed using [ab108535](#), the same antibody clone in a different buffer formulation.

Lanes 1 - 2: Merged signal (red and green). Green - [ab108535](#) observed at 75 kDa. Red - loading control [ab8245](#) (Mouse anti-GAPDH antibody [6C5]) observed at 37kDa.

[ab108535](#) was shown to react with KIF22 in HEK-293T wild-type cells in western blot with loss of signal observed in KIF22 knockout cell line [ab266817](#) (KIF22 knockout cell lysate [ab258018](#)). Wild-type and KIF22 knockout HEK-293T cell lysates were subjected to SDS-PAGE. Membranes were blocked in 3% milk in TBS-T (0.1% Tween®) before incubation with [ab108535](#) and [ab8245](#) (Mouse anti-GAPDH antibody [6C5]) overnight at 4°C at a 1 in 1000 dilution and a 1 in 20000 dilution respectively. Blots were incubated with Goat anti-Rabbit IgG H&L (IRDye® 800CW) preabsorbed ([ab216773](#)) and Goat anti-Mouse IgG H&L (IRDye® 680RD) preabsorbed ([ab216776](#)) secondary antibodies at 1 in 20000 dilution for 1 hour at room temperature before imaging.



Western blot - Anti-KIF22 antibody [EP2748] - BSA and Azide free (ab284779)

All lanes : Anti-KIF22 antibody [EP2748] ([ab108535](#)) at 1/1000 dilution

Lane 1 : HeLa cell lysate

Lane 2 : MCF7 cell lysate

Lane 3 : SH-SY5Y cell lysate

Lysates/proteins at 10 µg per lane.

Secondary

All lanes : HRP-labelled goat anti-rabbit at 1/2000 dilution

Predicted band size: 73 kDa

This data was developed using [ab108535](#), the same antibody clone in a different buffer formulation.

Please note: All products are "FOR RESEARCH USE ONLY. NOT FOR USE IN DIAGNOSTIC PROCEDURES"

Our Abpromise to you: Quality guaranteed and expert technical support

- Replacement or refund for products not performing as stated on the datasheet
- Valid for 12 months from date of delivery
- Response to your inquiry within 24 hours
- We provide support in Chinese, English, French, German, Japanese and Spanish
- Extensive multi-media technical resources to help you
- We investigate all quality concerns to ensure our products perform to the highest standards

If the product does not perform as described on this datasheet, we will offer a refund or replacement. For full details of the Abpromise, please visit <https://www.abcam.co.jp/abpromise> or contact our technical team.

Terms and conditions

- Guarantee only valid for products bought direct from Abcam or one of our authorized distributors