


Anti-KIF14 antibody ab71155

7 References [画像数 4](#)

製品の概要

製品名	Anti-KIF14 antibody
製品の詳細	Rabbit polyclonal to KIF14
由来種	Rabbit
アプリケーション	適用あり: WB, IP, IHC-P, ICC/IF
種交差性	交差種: Human 交差が予測される動物種: Chimpanzee, Gorilla 
免疫原	Synthetic peptide corresponding to a region between residue 1600 and the C-terminus (residue 1648) of human KIF14 (NP_055690.1).
ポジティブ・コントロール	Whole cell lysates from Hela cells and 293T cells.
特記事項	<p>The Life Science industry has been in the grips of a reproducibility crisis for a number of years. Abcam is leading the way in addressing this with our range of recombinant monoclonal antibodies and knockout edited cell lines for gold-standard validation. Please check that this product meets your needs before purchasing.</p> <p>If you have any questions, special requirements or concerns, please send us an inquiry and/or contact our Support team ahead of purchase. Recommended alternatives for this product can be found below, along with publications, customer reviews and Q&As</p>

製品の特性

製品の状態	Liquid
保存方法	Shipped at 4°C. Upon delivery aliquot and store at -20°C. Avoid freeze / thaw cycles.
バッファー	pH: 6.8 Preservative: 0.09% Sodium azide Constituents: 0.1% BSA, Tris buffered saline
精製度	Immunogen affinity purified
ポリ/モノ	ポリクローナル
アイソタイプ	IgG

アプリケーション

The Abpromise guarantee

Abpromise保証は、次のテスト済みアプリケーションにおけるab71155の使用に適用されます

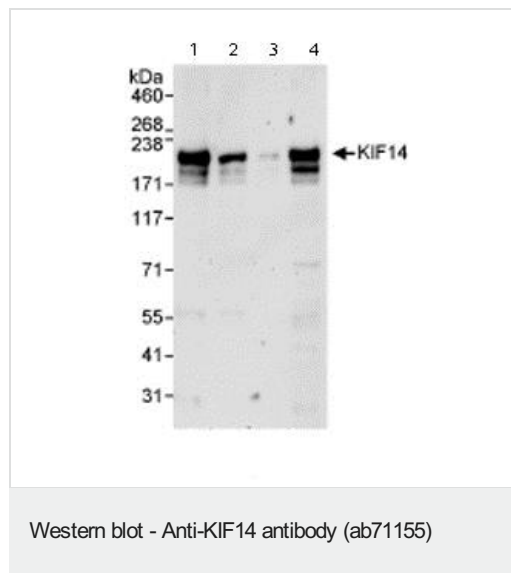
アプリケーションノートには、推奨の開始希釈率がありますが、適切な希釈率につきましてはご検討ください。

アプリケーション	Abreviews	特記事項
WB		1/2000 - 1/10000. Detects a band of approximately 210 kDa (predicted molecular weight: 186 kDa).
IP		Use at 2-5 µg/mg of lysate.
IHC-P		1/200 - 1/1000. Perform heat mediated antigen retrieval with Tris/EDTA buffer pH 9.0 before commencing with IHC staining protocol.
ICC/IF		Use at an assay dependent concentration.

ターゲット情報

機能	Plays an essential role in cytokinesis.
配列類似性	Belongs to the kinesin-like protein family. Contains 1 FHA domain. Contains 1 kinesin-motor domain.
発生段階	Up-regulated in cells progressing through G2/M phase.
細胞内局在	Nucleus. Cytoplasm. Cytoplasm > cytoskeleton > spindle. Nuclear localization observed during interphase in PubMed:16431929 or triggered by entry into mitosis in PubMed:16648480. Cytoplasmic in interphase (PubMed:16648480) and metaphase cells (PubMed:16431929). From prophase to metaphase, accumulates at the developing spindle poles and their associated microtubules. During anaphase, accumulates at the spindle midzone. Localization to the central spindle and midbody during anaphase is dependent upon PRC1 and CIT presence. In cells ready to undergo abscission, concentrates at the contractile ring.

画像



All lanes : Anti-KIF14 antibody (ab71155) at 0.04 µg/ml

Lane 1 : Whole cell lysate from Hela cells at 50 µg

Lane 2 : Whole cell lysate from Hela cells at 15 µg

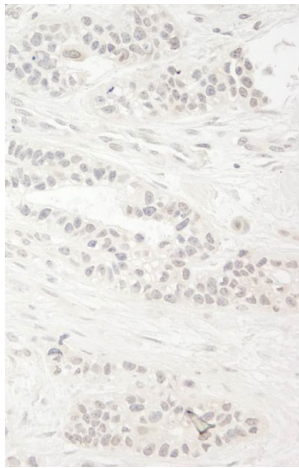
Lane 3 : Whole cell lysate from Hela cells at 5 µg

Lane 4 : Whole cell lysate from 293T cells at 50 µg

Predicted band size: 186 kDa

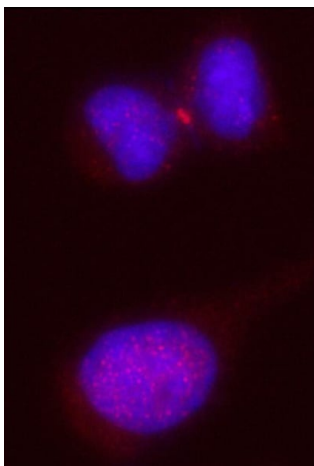
Observed band size: 210 kDa

Additional bands at: 180 kDa, 190 kDa, 60 kDa, 75 kDa. We are unsure as to the identity of these extra bands.



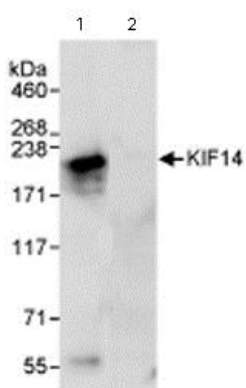
Immunohistochemistry (Formalin/PFA-fixed paraffin-embedded sections) - Anti-KIF14 antibody (ab71155)

Immunohistochemistry (Formalin/PFA-fixed paraffin-embedded sections) analysis of human breast carcinoma tissue labelling KIF14 with ab71155 at 1/200 (1µg/ml). Detection: DAB.



Immunocytochemistry/ Immunofluorescence - Anti-KIF14 antibody (ab71155)

Immunocytochemistry/Immunofluorescence analysis of formaldehyde-fixed HeLa cells labelling KIF14 with ab71155 at 1/100 (2µg/ml). A red-fluorescent goat anti-rabbit IgG (1/100) was used as the secondary antibody.



Immunoprecipitation - Anti-KIF14 antibody (ab71155)

Immunoprecipitation of HeLa whole cell lysate (1 mg) using ab71155 at 3 µg/mg lysate (lane 1) or control IgG (lane 2). 20% of immunoprecipitate was analysed by Western blot using ab71155 at 1 µg/ml.

Please note: All products are "FOR RESEARCH USE ONLY. NOT FOR USE IN DIAGNOSTIC PROCEDURES"

Our Abpromise to you: Quality guaranteed and expert technical support

- Replacement or refund for products not performing as stated on the datasheet
- Valid for 12 months from date of delivery
- Response to your inquiry within 24 hours
- We provide support in Chinese, English, French, German, Japanese and Spanish
- Extensive multi-media technical resources to help you
- We investigate all quality concerns to ensure our products perform to the highest standards

If the product does not perform as described on this datasheet, we will offer a refund or replacement. For full details of the Abpromise, please visit <https://www.abcam.co.jp/abpromise> or contact our technical team.

Terms and conditions

- Guarantee only valid for products bought direct from Abcam or one of our authorized distributors