


Anti-Keratin 12/K12 antibody [EPR1609(2)] - BSA and Azide free ab248082

リコンビナント RabMAb

画像数 2

製品の概要

製品名	Anti-Keratin 12/K12 antibody [EPR1609(2)] - BSA and Azide free
製品の詳細	Rabbit monoclonal [EPR1609(2)] to Keratin 12/K12 - BSA and Azide free
由来種	Rabbit
アプリケーション	適用あり: WB 適用なし: IP
種交差性	交差種: Rat 交差が予測される動物種: Human 
免疫原	Synthetic peptide. This information is proprietary to Abcam and/or its suppliers.
特記事項	<p>ab248082 is the carrier-free version of ab124975.</p> <p>Our carrier-free antibodies are typically supplied in a PBS-only formulation, purified and free of BSA, sodium azide and glycerol. The carrier-free buffer and high concentration allow for increased conjugation efficiency.</p> <p>This conjugation-ready format is designed for use with fluorochromes, metal isotopes, oligonucleotides, and enzymes, which makes them ideal for antibody labelling, functional and cell-based assays, flow-based assays (e.g. mass cytometry) and Multiplex Imaging applications.</p> <p>Use our conjugation kits for antibody conjugates that are ready-to-use in as little as 20 minutes with <1 minute hands-on-time and 100% antibody recovery: available for fluorescent dyes, HRP, biotin and gold.</p> <p>This product is compatible with the Maxpar[®] Antibody Labeling Kit from Fluidigm, without the need for antibody preparation. Maxpar[®] is a trademark of Fluidigm Canada Inc.</p> <p>Mouse: We have preliminary internal testing data to indicate this antibody may not react with this species. Please contact us for more information.</p>

製品の特性

製品の状態	Liquid
保存方法	Shipped at 4°C. Store at +4°C. Do Not Freeze.

バッファー	pH: 7.2 Constituent: PBS
キャリア・フリー	はい
精製度	Protein A purified
ポリ/モノ	モノクローナル
クローン名	EPR1609(2)
アイソタイプ	IgG

アプリケーション

The Abpromise guarantee **Abpromise保証は、**次のテスト済みアプリケーションにおけるab248082の使用に適用されます
アプリケーションノートには、推奨の開始希釈率がありますが、適切な希釈率につきましてはご検討ください。

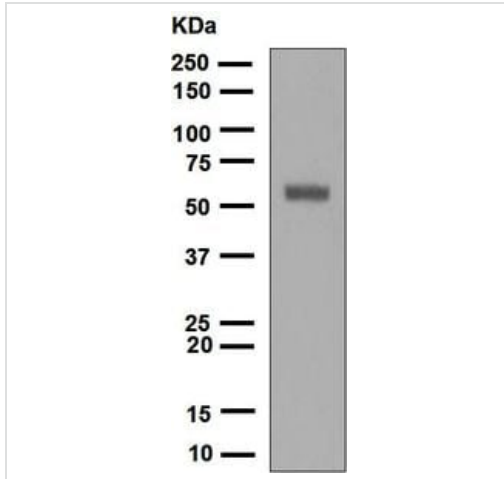
アプリケーション	Abreviews	特記事項
WB		Use at an assay dependent concentration. Predicted molecular weight: 54 kDa.

追加情報 Is unsuitable for IP.

ターゲット情報

機能	May play a unique role in maintaining the normal corneal epithelial function. Together with KRT3, essential for the maintenance of corneal epithelium integrity.
組織特異性	Cornea specific.
関連疾患	Defects in KRT12 are a cause of Meesmann corneal dystrophy (MECD) [MIM:122100]; also abbreviated MCD and known as juvenile epithelial corneal dystrophy of Meesmann. MECD is an autosomal dominant disease that causes fragility of the anterior corneal epithelium. Patients are usually asymptomatic until adulthood when rupture of the corneal microcysts may cause erosions, producing clinical symptoms such as photophobia, contact lens intolerance and intermittent diminution of visual acuity. Rarely, subepithelial scarring causes irregular corneal astigmatism and permanent visual impairment. Histological examination shows a disorganized and thickened epithelium with widespread cytoplasmic vacuolation and numerous small, round, debris-laden intraepithelial cysts.
配列類似性	Belongs to the intermediate filament family.

画像







Western blot - Anti-Keratin 12/K12 antibody [EPR1609(2)] - BSA and Azide free (ab248082)

Anti-Keratin 12/K12 antibody [EPR1609(2)] ([ab124975](#)) at 1/1000 dilution + Rat eyeball lysate at 10 μ g

Predicted band size: 54 kDa

This data was developed using [ab124975](#), the same antibody clone in a different buffer formulation.

Why choose a recombinant antibody?

 <p>Research with confidence Consistent and reproducible results</p>	 <p>Long-term and scalable supply Recombinant technology</p>
 <p>Success from the first experiment Confirmed specificity</p>	 <p>Ethical standards compliant Animal-free production</p>

Anti-Keratin 12/K12 antibody [EPR1609(2)] - BSA and Azide free (ab248082)

Please note: All products are "FOR RESEARCH USE ONLY. NOT FOR USE IN DIAGNOSTIC PROCEDURES"

Our Promise to you: Quality guaranteed and expert technical support

- Replacement or refund for products not performing as stated on the datasheet
- Valid for 12 months from date of delivery
- Response to your inquiry within 24 hours

- We provide support in Chinese, English, French, German, Japanese and Spanish
- Extensive multi-media technical resources to help you
- We investigate all quality concerns to ensure our products perform to the highest standards

If the product does not perform as described on this datasheet, we will offer a refund or replacement. For full details of the Abpromise, please visit <https://www.abcam.co.jp/abpromise> or contact our technical team.

Terms and conditions

- Guarantee only valid for products bought direct from Abcam or one of our authorized distributors