

# Anti-KCTD15 antibody ab106373

**1 References**   [画像数 4](#)

### 製品の概要

製品名	Anti-KCTD15 antibody
製品の詳細	Rabbit polyclonal to KCTD15
由来種	Rabbit
アプリケーション	<b>適用あり:</b> IHC-P, WB
種交差性	<b>交差種:</b> Human
免疫原	Synthetic peptide corresponding to Human KCTD15 (C terminal). Database link: <a href="#">Q96SI1</a>
ポジティブ・コントロール	Human spleen tissue lysate; Human spleen tissue; HeLa cell lysate
特記事項	<p>Antibodies should not be exposed to prolonged high temperatures.</p> <p>The Life Science industry has been in the grips of a reproducibility crisis for a number of years. Abcam is leading the way in addressing this with our range of recombinant monoclonal antibodies and knockout edited cell lines for gold-standard validation. Please check that this product meets your needs before purchasing.</p> <p>If you have any questions, special requirements or concerns, please send us an inquiry and/or contact our Support team ahead of purchase. Recommended alternatives for this product can be found below, along with publications, customer reviews and Q&amp;As</p>

### 製品の特性

製品の状態	Liquid
保存方法	Shipped at 4°C. Store at +4°C short term (1-2 weeks). Upon delivery aliquot. Store at -20°C. Avoid freeze / thaw cycle. Please see notes section.
バッファー	pH: 7.2 Preservative: 0.02% Sodium azide Constituent: PBS
精製度	Immunogen affinity purified
特記事項 (精製)	ab106373 is purified by affinity chromatography via a peptide column.
ポリ/モノ	ポリクローナル
アイソタイプ	IgG

## アプリケーション

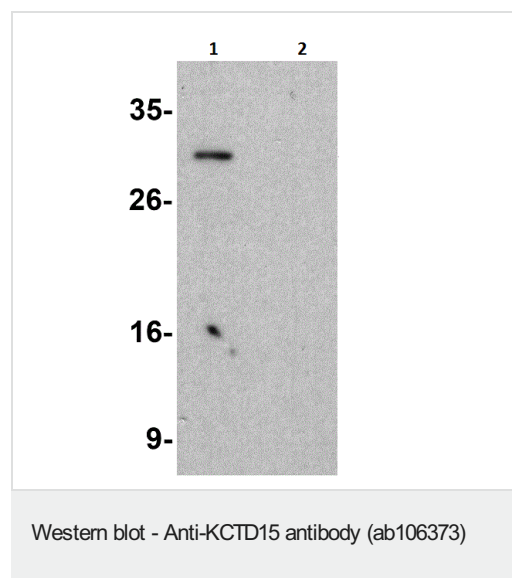
**The Abpromise guarantee**      **Abpromise保証は、** 次のテスト済みアプリケーションにおけるab106373の使用に適用されます  
アプリケーションノートには、推奨の開始希釈率がありますが、適切な希釈率につきましてはご検討ください。

アプリケーション	Abreviews	特記事項
IHC-P		Use a concentration of 2.5 - 20 µg/ml. Perform heat mediated antigen retrieval via the microwave method before commencing with IHC staining protocol.
WB		Use a concentration of 0.5 - 1 µg/ml. Predicted molecular weight: 32 kDa.

## ターゲット情報

**配列類似性**      Contains 1 BTB (POZ) domain.

## 画像

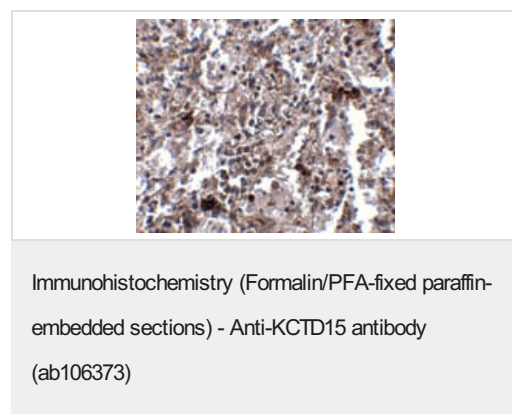


**All lanes :** Anti-KCTD15 antibody (ab106373) at 1 µg/ml

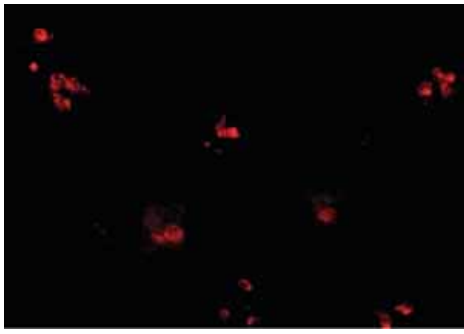
**Lane 1 :** HeLa cell lysate

**Lane 2 :** HeLa cell lysate with Blocking buffer

**Predicted band size:** 32 kDa

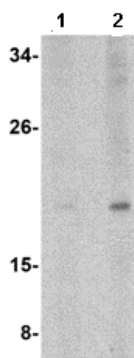


ab106373 at 2.5µg/ml staining KCTD15 in Human spleen by Immunohistochemistry.



Immunohistochemical analysis of human spleen tissue labelling KCTD15 with ab106373 at 20 ug/mL.

Immunohistochemistry (Formalin/PFA-fixed paraffin-embedded sections) - Anti-KCTD15 antibody (ab106373)



**Lane 1** : Anti-KCTD15 antibody (ab106373) at 0.5 µg/ml

**Lane 2** : Anti-KCTD15 antibody (ab106373) at 1 µg/ml

**All lanes** : Human spleen tissue lysate

Lysates/proteins at 15 µg per lane.

**Predicted band size:** 32 kDa

Western blot - Anti-KCTD15 antibody (ab106373)

**Please note:** All products are "FOR RESEARCH USE ONLY. NOT FOR USE IN DIAGNOSTIC PROCEDURES"

## Our Abpromise to you: Quality guaranteed and expert technical support

- Replacement or refund for products not performing as stated on the datasheet
- Valid for 12 months from date of delivery
- Response to your inquiry within 24 hours
- We provide support in Chinese, English, French, German, Japanese and Spanish
- Extensive multi-media technical resources to help you
- We investigate all quality concerns to ensure our products perform to the highest standards

If the product does not perform as described on this datasheet, we will offer a refund or replacement. For full details of the Abpromise, please visit <https://www.abcam.co.jp/abpromise> or contact our technical team.

## Terms and conditions

- Guarantee only valid for products bought direct from Abcam or one of our authorized distributors