

Anti-KCNN4 antibody ab75956

★★★★★ [1 Abreviews](#) [3 References](#) [画像数 1](#)

製品の概要

製品名	Anti-KCNN4 antibody
製品の詳細	Rabbit polyclonal to KCNN4
由来種	Rabbit
アプリケーション	適用あり: WB
種交差性	交差種: Human, Pig
免疫原	Synthetic peptide corresponding to Human KCNN4 aa 400 to the C-terminus (C terminal) conjugated to keyhole limpet haemocyanin. (Peptide available as ab87266)
ポジティブ・コントロール	This antibody gave a positive signal in the following human tissue lysates: Skin Placenta
特記事項	<p>The Life Science industry has been in the grips of a reproducibility crisis for a number of years. Abcam is leading the way in addressing this with our range of recombinant monoclonal antibodies and knockout edited cell lines for gold-standard validation. Please check that this product meets your needs before purchasing.</p> <p>If you have any questions, special requirements or concerns, please send us an inquiry and/or contact our Support team ahead of purchase. Recommended alternatives for this product can be found below, along with publications, customer reviews and Q&As</p>

製品の特性

製品の状態	Liquid
保存方法	Shipped at 4°C. Store at +4°C short term (1-2 weeks). Upon delivery aliquot. Store at -20°C or -80°C. Avoid freeze / thaw cycle.
バッファー	<p>pH: 7.40</p> <p>Preservative: 0.02% Sodium azide</p> <p>Constituent: PBS</p> <p>Batches of this product that have a concentration < 1mg/ml may have BSA added as a stabilising agent. If you would like information about the formulation of a specific lot, please contact our scientific support team who will be happy to help.</p>
精製度	Immunogen affinity purified
ポリ/モノ	ポリクローナル

アプリケーション

The Abpromise guarantee

Abpromise保証は、次のテスト済みアプリケーションにおけるab75956の使用に適用されます

アプリケーションノートには、推奨の開始希釈率がありますが、適切な希釈率につきましてはご検討ください。

アプリケーション	Abreviews	特記事項
WB	★★★★★ (1)	Use a concentration of 1 µg/ml. Detects a band of approximately 50 kDa (predicted molecular weight: 47 kDa).

ターゲット情報

機能

Forms a voltage-independent potassium channel that is activated by intracellular calcium. Activation is followed by membrane hyperpolarization which promotes calcium influx. Required for maximal calcium influx and proliferation during the reactivation of naive T cells. The channel is blocked by clotrimazole and charybdotoxin but is insensitive to apamin.

組織特異性

Widely expressed in non-excitabile tissues.

配列類似性

Belongs to the potassium channel KCNN family. KCa3.1/KCNN4 subfamily.

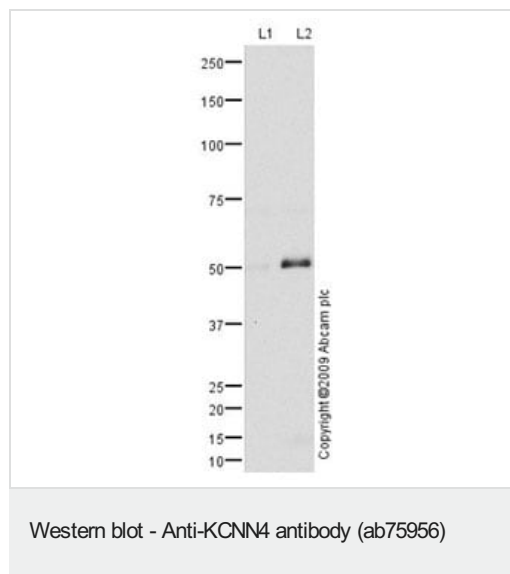
翻訳後修飾

Phosphorylation at His-358 by NDKB activates the channel, and conversely it's dephosphorylation by PHPT1 inhibits the channel.

細胞内局在

Membrane.

画像



All lanes : Anti-KCNN4 antibody (ab75956) at 1 µg/ml

Lane 1 : Human skin tissue lysate - total protein ([ab30166](#))

Lane 2 : Human placenta tissue lysate - total protein ([ab29745](#))

Lysates/proteins at 10 µg per lane.

Secondary

All lanes : Goat polyclonal to Rabbit IgG - H&L - Pre-Adsorbed (HRP) at 1/3000 dilution

Developed using the ECL technique.

Performed under reducing conditions.

Predicted band size: 47 kDa

Observed band size: 50 kDa

The 50 kDa band observed is comparable to the molecular weight seen with other commercially available antibodies to KCNN4.

Please note: All products are "FOR RESEARCH USE ONLY. NOT FOR USE IN DIAGNOSTIC PROCEDURES"

Our Abpromise to you: Quality guaranteed and expert technical support

- Replacement or refund for products not performing as stated on the datasheet
- Valid for 12 months from date of delivery
- Response to your inquiry within 24 hours
- We provide support in Chinese, English, French, German, Japanese and Spanish
- Extensive multi-media technical resources to help you
- We investigate all quality concerns to ensure our products perform to the highest standards

If the product does not perform as described on this datasheet, we will offer a refund or replacement. For full details of the Abpromise, please visit <https://www.abcam.co.jp/abpromise> or contact our technical team.

Terms and conditions

- Guarantee only valid for products bought direct from Abcam or one of our authorized distributors