


### Anti-KAT13D / CLOCK antibody ab93804

★★★★★ [1 Abreviews](#) [4 References](#) [画像数 4](#)

#### 製品の概要

製品名	Anti-KAT13D / CLOCK antibody
製品の詳細	Rabbit polyclonal to KAT13D / CLOCK
由来種	Rabbit
アプリケーション	<b>適用あり:</b> WB, IP
種交差性	<b>交差種:</b> Mouse, Human <b>交差が予測される動物種:</b> Guinea pig, Chimpanzee, Rhesus monkey, Gorilla, Orangutan 
免疫原	Synthetic peptide. This information is proprietary to Abcam and/or its suppliers.
ポジティブ・コントロール	HeLa, 293T and NIH3T3 whole cell lysate
特記事項	<p>The Life Science industry has been in the grips of a reproducibility crisis for a number of years. Abcam is leading the way in addressing this with our range of recombinant monoclonal antibodies and knockout edited cell lines for gold-standard validation. Please check that this product meets your needs before purchasing.</p> <p>If you have any questions, special requirements or concerns, please send us an inquiry and/or contact our Support team ahead of purchase. Recommended alternatives for this product can be found below, along with publications, customer reviews and Q&amp;As</p>

#### 製品の特性

製品の状態	Liquid
保存方法	Shipped at 4°C. Upon delivery aliquot and store at -20°C. Avoid freeze / thaw cycles.
バッファー	pH: 7 Preservative: 0.09% Sodium azide Constituent: Tris citrate/phosphate
精製度	Immunogen affinity purified
特記事項 (精製)	ab93804 was affinity purified using an epitope specific to KAT13D/CLOCK immobilized on solid support.
ポリ/モノ	ポリクローナル
アイソタイプ	IgG

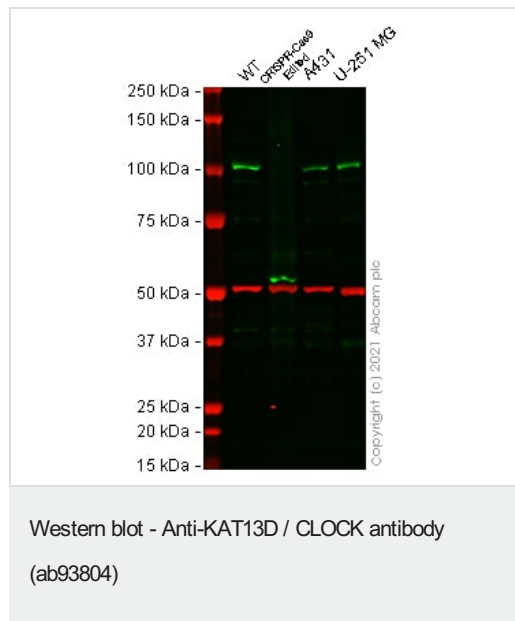
**The Abpromise guarantee**      **Abpromise保証は、** 次のテスト済みアプリケーションにおけるab93804の使用に適用されます  
 アプリケーションノートには、推奨の開始希釈率がありますが、適切な希釈率につきましてはご検討ください。

アプリケーション	Abreviews	特記事項
WB		1/2000 - 1/10000. Predicted molecular weight: 95 kDa.
IP		Use a concentration of 2 - 5 µg/ml.

## ターゲット情報

機能	ARNTL/2-CLOCK heterodimers activate E-box element (3'-CACGTG-5') transcription of a number of proteins of the circadian clock. Activates transcription of PER1 and PER2. This transcription is inhibited in a feedback loop by PER and CRY proteins. Has intrinsic histone acetyltransferase activity and this enzymatic function contributes to chromatin-remodeling events implicated in circadian control of gene expression (By similarity). Acetylates primarily histones H3 and H4 (By similarity). Acetylates also a non-histone substrate: ARNTL.
組織特異性	Expressed in all tissues examined including spleen, thymus, prostate, testis, ovary, small intestine, colon, leukocytes, heart, brain, placenta, lung, liver, skeletal muscle, kidney and pancreas. Highest levels in testis and skeletal muscle. Low levels in thymus, lung and liver. Expressed in all brain regions with highest levels in cerebellum. Highly expressed in the suprachiasmatic nucleus (SCN).
配列類似性	Contains 1 basic helix-loop-helix (bHLH) domain. Contains 1 PAC (PAS-associated C-terminal) domain. Contains 2 PAS (PER-ARNT-SIM) domains.
翻訳後修飾	Phosphorylation is dependent on CLOCK-ARNTL heterodimer formation.
細胞内局在	Cytoplasm. Nucleus. Shuffling between the cytoplasm and the nucleus is under circadian regulation and is ARNTL-dependent. Phosphorylated form located in the nucleus.

## 画像



**All lanes :** Anti-KAT13D / CLOCK antibody (ab93804) at 1/2000 dilution

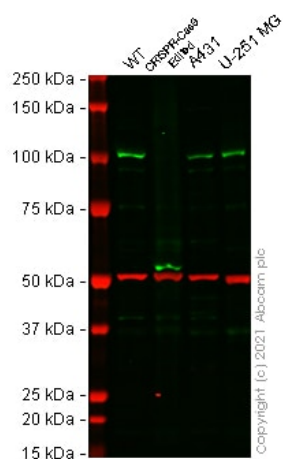
**Lane 1 :** Wild-type HeLa cell lysate  
**Lane 2 :** CLOCK CRISPR-Cas9 edited HeLa cell lysate  
**Lane 3 :** A431 cell lysate  
**Lane 4 :** U-251 MG cell lysate

Lysates/proteins at 20 µg per lane.

Performed under reducing conditions.

**Predicted band size:** 95 kDa  
**Observed band size:** 100 kDa

False colour image of Western blot: Anti-KAT13D / CLOCK antibody staining at 1/2000 dilution, shown in green; Mouse anti-Alpha Tubulin [DM1A] ([ab7291](#)) loading control staining at 1/20000 dilution, shown in red. In Western blot, ab93804 was shown to bind specifically to KAT13D / CLOCK. A band was observed at 100 kDa in wild-type HeLa cell lysates with no signal observed at this size in CLOCK CRISPR-Cas9 edited cell line [ab266054](#) (CRISPR-Cas9 edited cell lysate [ab258365](#)). The band observed in the CRISPR-Cas9 edited lysate lane below 100 kDa is likely to represent a truncated form of KAT13D / CLOCK. This has not been investigated further and the functional properties of the gene product have not been determined. To generate this image, wild-type and CLOCK CRISPR-Cas9 edited HeLa cell lysates were analysed. First, samples were run on an SDS-PAGE gel then transferred onto a nitrocellulose membrane. Membranes were blocked in 5 % milk in TBS-0.1 % Tween<sup>®</sup> 20 (TBS-T) before incubation with primary antibodies overnight at 4 °C. Blots were washed four times in TBS-T, incubated with secondary antibodies for 1 h at room temperature, washed again four times then imaged. Secondary antibodies used were Goat anti-Rabbit IgG H&L (IRDye<sup>®</sup> 800CW) preabsorbed ([ab216773](#)) and Goat anti-Mouse IgG H&L (IRDye<sup>®</sup> 680RD) preabsorbed ([ab216776](#)) at 1/20000 dilution.



Western blot - Anti-KAT13D / CLOCK antibody  
(ab93804)

**All lanes :** Anti-KAT13D / CLOCK antibody (ab93804) at 1/2000 dilution

**Lane 1 :** Wild-type HeLa cell lysate

**Lane 2 :** CLOCK CRISPR-Cas9 edited HeLa cell lysate

**Lane 3 :** A431 cell lysate

**Lane 4 :** U-251 MG cell lysate

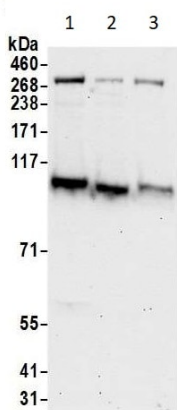
Lysates/proteins at 20 µg per lane.

Performed under reducing conditions.

**Predicted band size:** 95 kDa

**Observed band size:** 100 kDa

False colour image of Western blot: Anti-KAT13D / CLOCK antibody staining at 1/2000 dilution, shown in green; Mouse anti-Alpha Tubulin [DM1A] ([ab7291](#)) loading control staining at 1/20000 dilution, shown in red. In Western blot, ab93804 was shown to bind specifically to KAT13D / CLOCK. A band was observed at 100 kDa in wild-type HeLa cell lysates with no signal observed at this size in CLOCK CRISPR-Cas9 edited cell line [ab265301](#) (CRISPR-Cas9 edited cell lysate [ab258364](#)). The band observed in the CRISPR-Cas9 edited lysate lane below 100 kDa is likely to represent a truncated form of KAT13D / CLOCK. This has not been investigated further and the functional properties of the gene product have not been determined. To generate this image, wild-type and CLOCK CRISPR-Cas9 edited HeLa cell lysates were analysed. First, samples were run on an SDS-PAGE gel then transferred onto a nitrocellulose membrane. Membranes were blocked in 5 % milk in TBS-0.1 % Tween<sup>®</sup> 20 (TBS-T) before incubation with primary antibodies overnight at 4 °C. Blots were washed four times in TBS-T, incubated with secondary antibodies for 1 h at room temperature, washed again four times then imaged. Secondary antibodies used were Goat anti-Rabbit IgG H&L (IRDye<sup>®</sup> 800CW) preabsorbed ([ab216773](#)) and Goat anti-Mouse IgG H&L (IRDye<sup>®</sup> 680RD) preabsorbed ([ab216776](#)) at 1/20000 dilution.



Western blot - Anti-KAT13D / CLOCK antibody  
(ab93804)

**All lanes :** Anti-KAT13D / CLOCK antibody (ab93804) at 0.1 µg/ml

**Lane 1 :** HeLa cell lysate

**Lane 2 :** HEK293T cell lysate

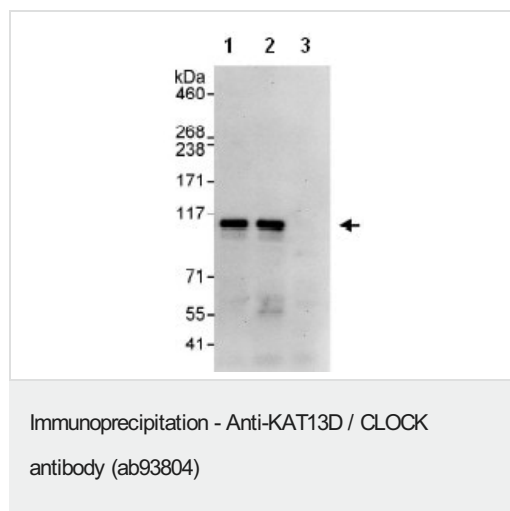
**Lane 3 :** NIH3T3 cell lysate

Lysates/proteins at 50 µg per lane.

**Predicted band size:** 95 kDa

**Exposure time:** 30 seconds

Detection: Chemiluminescence



ab93804 at 1 µg/ml detecting KAT13D/CLOCK in HeLa whole cell lysate by WB following IP.

Lane 1: IP with an antibody which recognizes an upstream epitope of KAT13D/CLOCK

Lane 2: ab93804 at 3µg/mg of lysate

Lane 3: control IgG.

In each case, 1 mg of lysate was used for IP and 20% of the IP was loaded.

Detection: Chemiluminescence with an exposure time of 30 seconds

**Please note:** All products are "FOR RESEARCH USE ONLY. NOT FOR USE IN DIAGNOSTIC PROCEDURES"

### Our Abpromise to you: Quality guaranteed and expert technical support

- Replacement or refund for products not performing as stated on the datasheet
- Valid for 12 months from date of delivery
- Response to your inquiry within 24 hours
- We provide support in Chinese, English, French, German, Japanese and Spanish
- Extensive multi-media technical resources to help you
- We investigate all quality concerns to ensure our products perform to the highest standards

If the product does not perform as described on this datasheet, we will offer a refund or replacement. For full details of the Abpromise, please visit <https://www.abcam.co.jp/abpromise> or contact our technical team.

### Terms and conditions

- Guarantee only valid for products bought direct from Abcam or one of our authorized distributors