

# Anti-Kappa light chain antibody [EPR5367-8] - BSA and Azide free ab232152

リコンビナント RabMAb

画像数 5

### 製品の概要

製品名	Anti-Kappa light chain antibody [EPR5367-8] - BSA and Azide free
製品の詳細	Rabbit monoclonal [EPR5367-8] to Kappa light chain - BSA and Azide free
由来種	Rabbit
アプリケーション	<b>適用あり:</b> IP, IHC-P, WB, ELISA
種交差性	<b>交差種:</b> Human
免疫原	Full length native protein (purified) corresponding to Human Kappa light chain. Purified Human IgA
ポジティブ・コントロール	IP: Human spleen lysate. WB: Human tonsil, plasma and spleen lysate; IHC: Human tonsil lysate.
特記事項	<p>ab232152 is the carrier-free version of <a href="#">ab124727</a>.</p> <p>Our <b>carrier-free</b> antibodies are typically supplied in a PBS-only formulation, purified and free of BSA, sodium azide and glycerol. The carrier-free buffer and high concentration allow for increased conjugation efficiency.</p> <p>This conjugation-ready format is designed for use with fluorochromes, metal isotopes, oligonucleotides, and enzymes, which makes them ideal for antibody labelling, functional and cell-based assays, flow-based assays (e.g. mass cytometry) and Multiplex Imaging applications.</p> <p>Use our <b>conjugation kits</b> for antibody conjugates that are ready-to-use in as little as 20 minutes with &lt;1 minute hands-on-time and 100% antibody recovery: available for fluorescent dyes, HRP, biotin and gold.</p> <p>This product is compatible with the Maxpar<sup>®</sup> Antibody Labeling Kit from Fluidigm, without the need for antibody preparation. Maxpar<sup>®</sup> is a trademark of Fluidigm Canada Inc.</p> <p>This product is a recombinant monoclonal antibody, which offers several advantages including:</p> <ul style="list-style-type: none"> <li>- High batch-to-batch consistency and reproducibility</li> <li>- Improved sensitivity and specificity</li> <li>- Long-term security of supply</li> <li>- Animal-free production</li> </ul> <p>For more information <a href="#">see here</a>.</p> <p>Our RabMAb<sup>®</sup> technology is a patented hybridoma-based technology for making rabbit monoclonal antibodies. For details on our patents, please refer to <a href="#">RabMAb<sup>®</sup> patents</a>.</p>

## 製品の特性

製品の状態	Liquid
保存方法	Shipped at 4°C. Store at +4°C. Do Not Freeze.
バッファー	pH: 7.2 Constituent: PBS
キャリア・フリー	はい
精製度	Protein A purified
ポリ/モノ	モノクローナル
クローン名	EPR5367-8
アイソタイプ	IgG

## アプリケーション

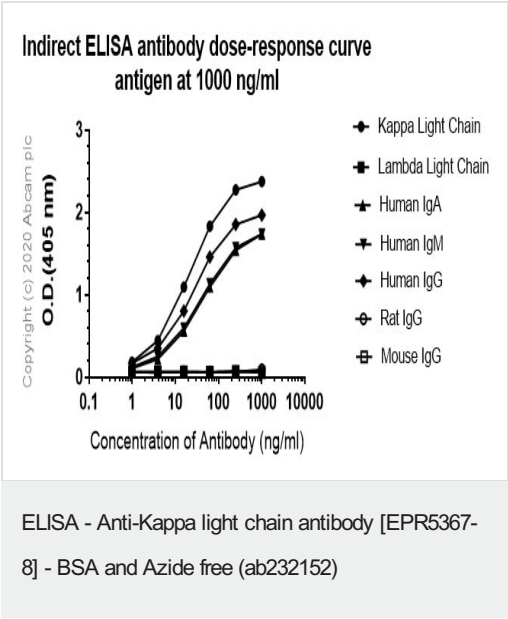
**The Abpromise guarantee**      **Abpromise保証は、次のテスト済みアプリケーションにおけるab232152の使用に適用されます**  
アプリケーションノートには、推奨の開始希釈率がありますが、適切な希釈率につきましてはご検討ください。

アプリケーション	Abreviews	特記事項
IP		Use at an assay dependent concentration.
IHC-P		Use at an assay dependent concentration. Perform heat mediated antigen retrieval with citrate buffer pH 6 before commencing with IHC staining protocol. Antigen retrieval is recommended.
WB		Use at an assay dependent concentration. Predicted molecular weight: 25 kDa.
ELISA		Use at an assay dependent concentration.

## ターゲット情報

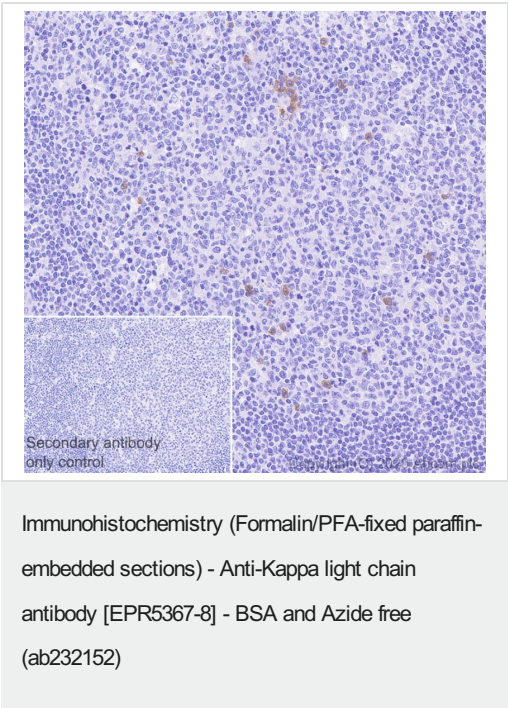
関連性	Immunoglobulins belong to a group of related glyco proteins which make up 20% of serum proteins. Antigens and immunoglobulins react to confer immunity to individuals. Immunoglobulins have similar structures of two identical heavy chains and two identical light chains. Both the heavy chains and the light chains are divided into constant and variable regions. The constant regions have the same amino acid sequences between all the immunoglobulin classes. The variable regions have approximately 110 amino acids with high sequence variability. The amino acid sequence of the heavy chain determines the class of an immunoglobulin. The five types of immunoglobulin heavy chains are known as: IgG, IgA, IgM, IgD, and IgE. IgG is divided into four subclasses, and IgA is divided into two subclasses. In serum IgA and IgG are monomers with a single 4 polypeptide unit; while, IgM is a pentamer. IgA may also form polymers. Kappa light chain antibody can be used for the identification of leukemias, plasmacytomas and certain non Hodgkin's lymphomas. Kappa light chain contains one immunoglobulin like domain. The EU sequence has the INV allotypic marker, Ala 45 and Val 83. The ROY sequence has the INV allotypic marker, Ala 45 and Leu 83.
-----	--

画像



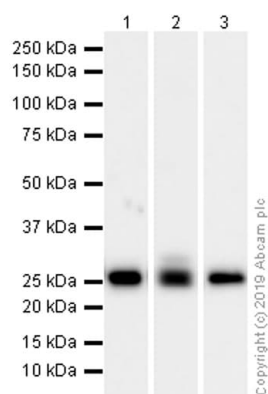
This data was developed using [ab124727](#), the same antibody clone in a different buffer formulation.

ELISA analysis of Kappa Light Chains, Lambda Light Chains, Human IgA, Human IgM, Human IgG, Rat IgG, and Mouse IgG at 1000ng/mL using purified [ab124727](#). Alkaline Phosphatase-conjugated AffiniPure Goat Anti-Rabbit IgG (H+L) was used as the secondary antibody at 1/2500 dilution.



This data was developed using [ab124727](#), the same antibody clone in a different buffer formulation.

Immunohistochemistry (Formalin/PFA-fixed paraffin-embedded sections) analysis of Human tonsil tissue sections labeling Kappa light chain with purified [ab124727](#) at 1/5000 dilution (0.06 µg/mL). Heat mediated antigen retrieval using Bond™ Epitope Retrieval Solution 2 (pH 9.0). The immunostaining was performed on a Leica Biosystems BOND® RX instrument. Rabbit specific IHC polymer detection kit HRP/DAB ([ab209101](#)) was used as the secondary antibody. Negative control: PBS instead of the primary antibody. Hematoxylin was used as a counterstain.



Western blot - Anti-Kappa light chain antibody  
[EPR5367-8] - BSA and Azide free (ab232152)

**Lane 1** : Anti-Kappa light chain antibody [EPR5367-8] ([ab124727](#))  
at 1/5000 dilution (Purified)

**Lanes 2-3** : Anti-Kappa light chain antibody [EPR5367-8]  
([ab124727](#)) at 1/5000 dilution

**Lane 1** : Human tonsil lysate

**Lane 2** : Human plasma lysate

**Lane 3** : Human spleen lysate

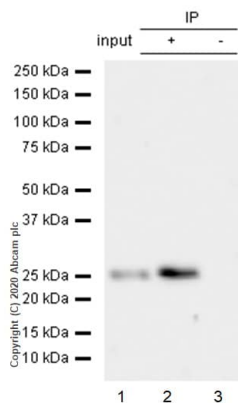
Lysates/proteins at 15 µg per lane.

### Secondary

**All lanes** : Goat Anti-Rabbit IgG (HRP) with minimal cross-reactivity  
with human IgG at 1/2000 dilution

**Predicted band size:** 25 kDa

This data was developed using [ab124727](#), the same antibody  
clone in a different buffer formulation.



Immunoprecipitation - Anti-Kappa light chain antibody [EPR5367-8] - BSA and Azide free (ab232152)

This data was developed using **ab124727**, the same antibody clone in a different buffer formulation.

Purified **ab124727** at 1/50 dilution (2µg) immunoprecipitating Kappa light chain in Human spleen lysate.

Lane 1 (input): Human spleen lysate 10µg

Lane 2 (+): **ab124727** + Human spleen lysate.

Lane 3 (-): Rabbit monoclonal IgG (**ab172730**) instead of **ab124727** in Human spleen lysate.

VeriBlot for IP Detection Reagent (HRP) (**ab131366**) (1/1000 dilution) was used for Western blotting.

Blocking Buffer and concentration: 5% NFDm/TBST.

Diluting buffer and concentration: 5% NFDm/TBST.

Observed band size: 25 kDa

### Why choose a recombinant antibody?



**Research with confidence**  
Consistent and reproducible results



**Long-term and scalable supply**  
Recombinant technology



**Success from the first experiment**  
Confirmed specificity



**Ethical standards compliant**  
Animal-free production

Anti-Kappa light chain antibody [EPR5367-8] - BSA and Azide free (ab232152)

**Please note:** All products are "FOR RESEARCH USE ONLY. NOT FOR USE IN DIAGNOSTIC PROCEDURES"

### Our Abpromise to you: Quality guaranteed and expert technical support

- Replacement or refund for products not performing as stated on the datasheet
- Valid for 12 months from date of delivery
- Response to your inquiry within 24 hours
- We provide support in Chinese, English, French, German, Japanese and Spanish
- Extensive multi-media technical resources to help you
- We investigate all quality concerns to ensure our products perform to the highest standards

If the product does not perform as described on this datasheet, we will offer a refund or replacement. For full details of the Abpromise, please visit <https://www.abcam.co.jp/abpromise> or contact our technical team.

## Terms and conditions

---

- Guarantee only valid for products bought direct from Abcam or one of our authorized distributors