

# Anti-Kallikrein 4 antibody ab181402

**2 References** [画像数 3](#)

### 製品の概要

---

製品名	Anti-Kallikrein 4 antibody
製品の詳細	Rabbit polyclonal to Kallikrein 4
由来種	Rabbit
アプリケーション	<b>適用あり:</b> WB, ICC/IF, IHC-P
種交差性	<b>交差種:</b> Human
免疫原	Synthetic peptide corresponding to Human Kallikrein 4 (internal sequence). Peptide corresponds to 15 amino acids near the center. (NP_004908) Database link: <a href="#">Q9Y5K2</a>
ポジティブ・コントロール	Human kidney tissue and tissue lysate.
特記事項	<p>The Life Science industry has been in the grips of a reproducibility crisis for a number of years. Abcam is leading the way in addressing this with our range of recombinant monoclonal antibodies and knockout edited cell lines for gold-standard validation. Please check that this product meets your needs before purchasing.</p> <p>If you have any questions, special requirements or concerns, please send us an inquiry and/or contact our Support team ahead of purchase. Recommended alternatives for this product can be found below, along with publications, customer reviews and Q&amp;As</p>

### 製品の特性

---

製品の状態	Liquid
保存方法	Shipped at 4°C. Store at +4°C short term (1-2 weeks). Upon delivery aliquot. Store at -20°C long term. Avoid freeze / thaw cycle.
バッファー	pH: 7.2 Preservative: 0.02% Sodium azide Constituent: 99% PBS
精製度	Immunogen affinity purified
ポリ/モノ	ポリクローナル
アイソタイプ	IgG

### アプリケーション

---

## The Abpromise guarantee

**Abpromise保証は、次のテスト済みアプリケーションにおけるab181402の使用に適用されます**

アプリケーションノートには、推奨の開始希釈率がありますが、適切な希釈率につきましてはご検討ください。

アプリケーション	Abreviews	特記事項
WB		Use a concentration of 1 µg/ml. Detects a band of approximately 31 kDa (predicted molecular weight: 27 kDa).
ICC/IF		Use a concentration of 20 µg/ml.
IHC-P		Use a concentration of 5 µg/ml. Perform heat mediated antigen retrieval with citrate buffer pH 6 before commencing with IHC staining protocol.

## ターゲット情報

### 組織特異性

Expressed in prostate.

### 関連疾患

Defects in KLK4 are the cause of amelogenesis imperfecta hypomaturation type 2A1 (AI2A1) [MIM:204700]. AI2A1 is an autosomal recessive defect of enamel formation. The disorder involves both primary and secondary dentitions. The teeth have a shiny agar jelly appearance and the enamel is softer than normal. Brown pigment is present in middle layers of enamel.

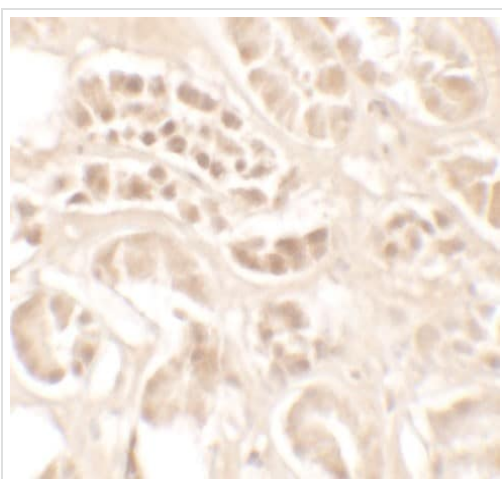
### 配列類似性

Belongs to the peptidase S1 family, Kallikrein subfamily.  
Contains 1 peptidase S1 domain.

### 細胞内局在

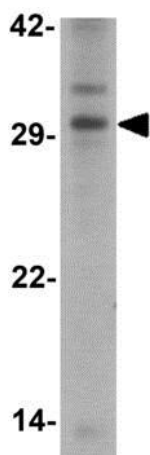
Secreted.

## 画像



Immunohistochemical analysis of paraffin-embedded Human kidney tissue, labeling Kallikrein 4 using ab181402 at 5 µg/mL.

Immunohistochemistry (Formalin/PFA-fixed paraffin-embedded sections) - Anti-Kallikrein 4 antibody (ab181402)



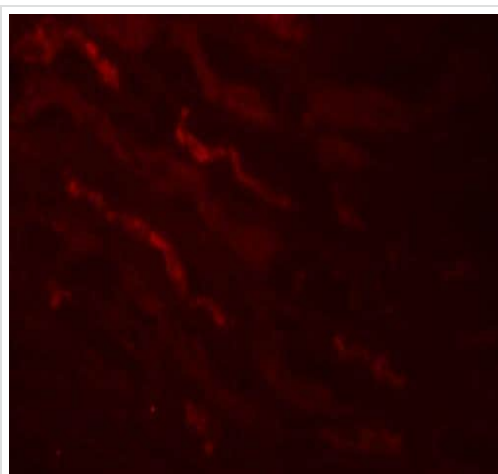
Western blot - Anti-Kallikrein 4 antibody (ab181402)

Anti-Kallikrein 4 antibody (ab181402) at 1  $\mu\text{g/ml}$  + Human kidney tissue lysate at 15  $\mu\text{g}$

Developed using the ECL technique.

**Predicted band size:** 27 kDa

**Observed band size:** 31 kDa



Immunocytochemistry/ Immunofluorescence - Anti-Kallikrein 4 antibody (ab181402)

Immunofluorescence analysis of Human kidney tissue, labeling Kallikrein 4 using ab181402 at 20  $\mu\text{g/mL}$ .

**Please note:** All products are "FOR RESEARCH USE ONLY. NOT FOR USE IN DIAGNOSTIC PROCEDURES"

### Our Abpromise to you: Quality guaranteed and expert technical support

- Replacement or refund for products not performing as stated on the datasheet
- Valid for 12 months from date of delivery
- Response to your inquiry within 24 hours
- We provide support in Chinese, English, French, German, Japanese and Spanish
- Extensive multi-media technical resources to help you
- We investigate all quality concerns to ensure our products perform to the highest standards

If the product does not perform as described on this datasheet, we will offer a refund or replacement. For full details of the Abpromise, please visit <https://www.abcam.co.jp/abpromise> or contact our technical team.

## Terms and conditions

---

- Guarantee only valid for products bought direct from Abcam or one of our authorized distributors