

# Anti-JLP antibody ab12332

**1 References** [画像数 5](#)

### 製品の概要

製品名	Anti-JLP antibody
製品の詳細	Rabbit polyclonal to JLP
由来種	Rabbit
アプリケーション	<b>適用あり:</b> IHC-P, WB, IP
種交差性	<b>交差種:</b> Mouse, Human <b>交差が予測される動物種:</b> Chimpanzee, Baboon, Rhesus monkey, Orangutan 
免疫原	Synthetic peptide corresponding to Human JLP aa 775-825. Database link: <a href="#">O60271</a>
ポジティブ・コントロール	HeLa nuclear extract.
特記事項	<p>The Life Science industry has been in the grips of a reproducibility crisis for a number of years. Abcam is leading the way in addressing this with our range of recombinant monoclonal antibodies and knockout edited cell lines for gold-standard validation. Please check that this product meets your needs before purchasing.</p> <p>If you have any questions, special requirements or concerns, please send us an inquiry and/or contact our Support team ahead of purchase. Recommended alternatives for this product can be found below, along with publications, customer reviews and Q&amp;As</p>

### 製品の特性

製品の状態	Liquid
保存方法	Shipped at 4°C. Upon delivery aliquot and store at -20°C. Avoid freeze / thaw cycles.
バッファー	pH: 7 Preservative: 0.1% Sodium azide Constituents: 0.021% PBS, 1.764% Sodium citrate, 1.815% Tris
精製度	Immunogen affinity purified
特記事項(精製)	This antibody is affinity purified.
ポリ/モノ	ポリクローナル
アイソタイプ	IgG

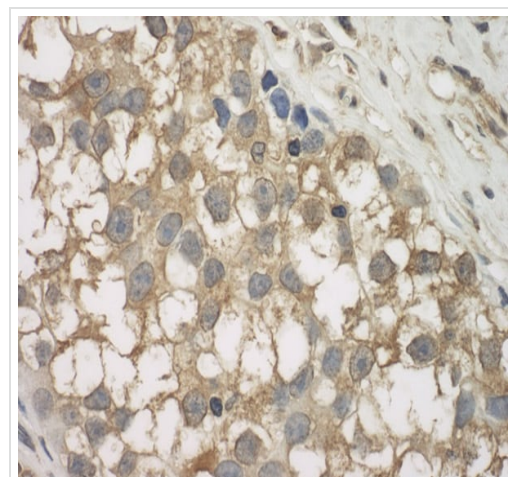
**The Abpromise guarantee**      **Abpromise保証は、** 次のテスト済みアプリケーションにおけるab12332の使用に適用されます  
アプリケーションノートには、推奨の開始希釈率がありますが、適切な希釈率につきましてはご検討ください。

アプリケーション	Abreviews	特記事項
IHC-P		1/500 - 1/2000. Perform heat mediated antigen retrieval with citrate buffer pH 6 before commencing with IHC staining protocol.
WB		1/1000 - 1/10000. Predicted molecular weight: 156.8 kDa.
IP		Use at 6 µg/mg of lysate.

## ターゲット情報

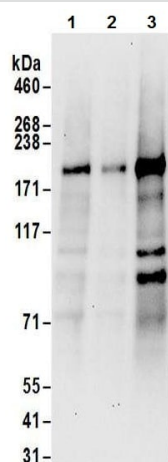
関連性	JLP is a member of the JNK-interacting protein (JIP) group of scaffold proteins which selectively mediate JNK signaling by aggregating specific components of the MAPK cascade to form a functional JNK signaling module.
細胞内局在	Cytoplasm. Cytoplasm, perinuclear region. Note: Perinuclear distribution in response to stress signals such as UV radiation.

## 画像



Immunohistochemistry (Formalin/PFA-fixed paraffin-embedded sections) analysis of human testicular seminoma tissue labelling JLP with ab12332 at 1/1000 (1 µg/ml). Detection: DAB.

Immunohistochemistry (Formalin/PFA-fixed paraffin-embedded sections) - Anti-JLP antibody (ab12332)



Western blot - Anti-JLP antibody (ab12332)

**All lanes :** Anti-JLP antibody (ab12332) at 0.1 µg/ml

**Lane 1 :** HeLa whole cell lysate at 50 µg

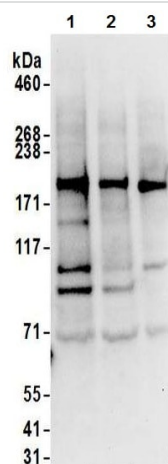
**Lane 2 :** HeLa whole cell lysate at 15 µg

**Lane 3 :** 293T whole cell lysate at 50 µg

Developed using the ECL technique.

**Predicted band size:** 156.8 kDa

**Exposure time:** 30 seconds



Western blot - Anti-JLP antibody (ab12332)

**All lanes :** Anti-JLP antibody (ab12332) at 0.1 µg/ml

**Lane 1 :** TCKM whole cell lysate at 50 µg

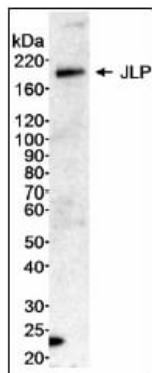
**Lane 2 :** Renca whole cell lysate at 15 µg

**Lane 3 :** CT26 whole cell lysate at 50 µg

Developed using the ECL technique.

**Predicted band size:** 156.8 kDa

**Exposure time:** 10 seconds



Western blot - Anti-JLP antibody (ab12332)

#### Samples:

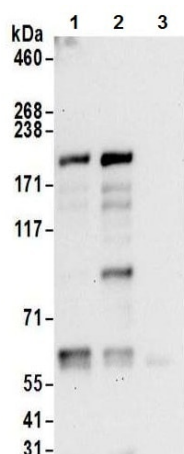
Nuclear extract (NE, 20 µg) from HeLa cells. *Antibody:* Affinity purified rabbit anti-JLP antibody ab12332 used at 0.3 µg/ml.

*Detection:* Chemiluminescence with an exposure time of 30 seconds.

Samples: Nuclear extract (NE, 20 µg) from HeLa cells. Antibody:

Affinity purified rabbit anti-JLP antibody ab12332 used at 0.3 µg/ml.

Detection: Chemiluminescence with an exposure time of 30 seconds.



Immunoprecipitation - Anti-JLP antibody (ab12332)

Immunoprecipitation analysis of HeLa whole cell lysate (1 mg for

IP; 20% of IP loaded). ab12332 was used

for immunoprecipitation at 6 µg/mg lysate (lanes 1 and 2). Lane 3 - control IgG. For western blot ab12332 was used at 1 µg/ml.

**Please note:** All products are "FOR RESEARCH USE ONLY. NOT FOR USE IN DIAGNOSTIC PROCEDURES"

### Our Abpromise to you: Quality guaranteed and expert technical support

- Replacement or refund for products not performing as stated on the datasheet
- Valid for 12 months from date of delivery
- Response to your inquiry within 24 hours
- We provide support in Chinese, English, French, German, Japanese and Spanish
- Extensive multi-media technical resources to help you
- We investigate all quality concerns to ensure our products perform to the highest standards

If the product does not perform as described on this datasheet, we will offer a refund or replacement. For full details of the Abpromise, please visit <https://www.abcam.co.jp/abpromise> or contact our technical team.

### Terms and conditions

- Guarantee only valid for products bought direct from Abcam or one of our authorized distributors