


Anti-ITM2B antibody ab101522

画像数 4

製品の概要

製品名	Anti-ITM2B antibody
製品の詳細	Rabbit polyclonal to ITM2B
由来種	Rabbit
アプリケーション	適用あり: WB, ICC/IF
種交差性	交差種: Mouse, Rat, Human 交差が予測される動物種: Cow, Pig 
免疫原	Recombinant fragment corresponding to Human ITM2B aa 65-234. Database link: Q9Y287
ポジティブ・コントロール	WB: HepG2, HCT116 whole cell lysate. Mouse brain lysate. Rat brain tissue extract. ICC/IF: HeLa cells.
特記事項	<p>The Life Science industry has been in the grips of a reproducibility crisis for a number of years. Abcam is leading the way in addressing this with our range of recombinant monoclonal antibodies and knockout edited cell lines for gold-standard validation. Please check that this product meets your needs before purchasing.</p> <p>If you have any questions, special requirements or concerns, please send us an inquiry and/or contact our Support team ahead of purchase. Recommended alternatives for this product can be found below, along with publications, customer reviews and Q&As</p>

製品の特性

製品の状態	Liquid
保存方法	Shipped at 4°C. Store at +4°C short term (1-2 weeks). Upon delivery aliquot. Store at -20°C or -80°C. Avoid freeze / thaw cycle.
バッファー	pH: 7.00 Preservative: 0.025% Proclin 300 Constituents: 79% PBS, 20% Glycerol (glycerin, glycerine)
精製度	Immunogen affinity purified
ポリ/モノ	ポリクローナル
アイソタイプ	IgG

アプリケーション

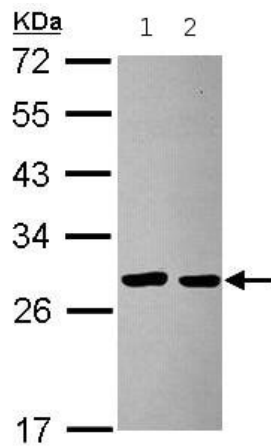
The Abpromise guarantee Abpromise保証は、 次のテスト済みアプリケーションにおけるab101522の使用に適用されます
アプリケーションノートには、推奨の開始希釈率がありますが、適切な希釈率につきましてはご検討ください。

アプリケーション	Abreviews	特記事項
WB		1/500 - 1/3000. Predicted molecular weight: 30 kDa.
ICC/IF		1/100 - 1/1000.

ターゲット情報

機能	Functions as a protease inhibitor. Plays a role in APP processing regulating the physiological production of the beta amyloid peptide. Restricts docking of gamma-secretase to APP and access of alpha- and beta-secretase to their cleavage APP sequence.
組織特異性	Expressed in brain and in other tissues.
関連疾患	<p>Defects in ITM2B are a cause of cerebral amyloid angiopathy ITM2B-related type 1 (CAA-ITM2B1) [MIM:176500]. A disorder characterized by amyloid deposition in the walls of cerebral blood vessels and neurodegeneration in the central nervous system. Cerebral amyloid angiopathy, non-neuritic and perivascular plaques and neurofibrillary tangles are the predominant pathological lesions. Clinical features include progressive mental deterioration, spasticity and muscular rigidity.</p> <p>Defects in ITM2B are a cause of cerebral amyloid angiopathy ITM2B-related type 2 (CAA-ITM2B2) [MIM:117300]; also known as hereditary ophthalmic-oto-encephalica. A disorder characterized by amyloid deposition in the walls of the blood vessels of the cerebrum, choroid plexus, cerebellum, spinal cord and retina. Plaques and neurofibrillary tangles are observed in the hippocampus. Clinical features include progressive ataxia, dementia, cataracts and deafness.</p>
配列類似性	<p>Belongs to the ITM2 family.</p> <p>Contains 1 BRICHOS domain.</p>
翻訳後修飾	The C-terminal part of the ectodomain is processed by furin and related proteases producing a secreted peptide of 4 to 5 kDa. For the ABRI and ADAN variants the C-terminal secreted peptide is larger and may produce amyloid fibrils responsible for neuronal dysfunction and dementia. The remaining part of the ectodomain containing the BRICHOS domain is cleaved by ADAM10 and is secreted as a peptide of 25 kDa. The membrane-bound N-terminal fragment (NTF) of 22 kDa is further proteolytically processed by SPPL2A and SPPL2B through regulated intramembrane proteolysis producing a secreted peptide (BR12C) and an intracellular domain (ICD) released in the cytosol.
細胞内局在	Golgi apparatus membrane. Cell membrane.

画像



Western blot - Anti-ITM2B antibody (ab101522)

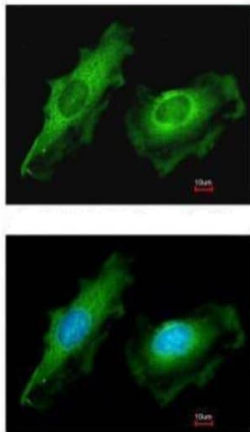
All lanes : Anti-ITM2B antibody (ab101522) at 1/1000 dilution

Lane 1 : HepG2 whole cell lysate

Lane 2 : HCT116 whole cell lysate

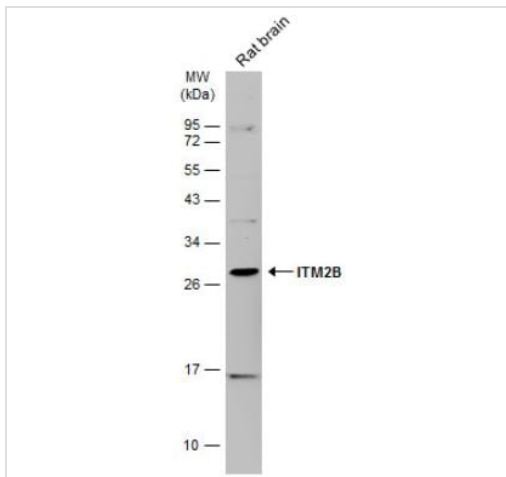
Lysates/proteins at 30 µg per lane.

Predicted band size: 30 kDa



HeLa cells stained for ITM2B (green) using ab101522 at 1/200 dilution in ICC/IF.

Immunocytochemistry/ Immunofluorescence - Anti-ITM2B antibody (ab101522)

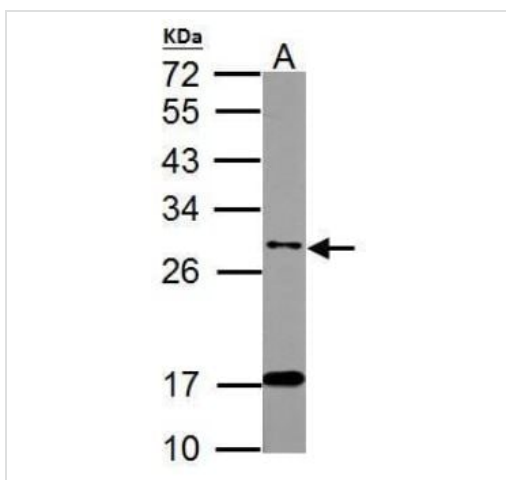


Western blot - Anti-ITM2B antibody (ab101522)

Anti-ITM2B antibody (ab101522) at 1/1000 dilution + Rat brain tissue extract at 50 µg

Predicted band size: 30 kDa

12% SDS-PAGE



Western blot - Anti-ITM2B antibody (ab101522)

Anti-ITM2B antibody (ab101522) at 1/1000 dilution + Mouse brain lysate at 50 µg

Predicted band size: 30 kDa

12 % SDS-PAGE

Please note: All products are "FOR RESEARCH USE ONLY. NOT FOR USE IN DIAGNOSTIC PROCEDURES"

Our Abpromise to you: Quality guaranteed and expert technical support

- Replacement or refund for products not performing as stated on the datasheet
- Valid for 12 months from date of delivery
- Response to your inquiry within 24 hours
- We provide support in Chinese, English, French, German, Japanese and Spanish
- Extensive multi-media technical resources to help you
- We investigate all quality concerns to ensure our products perform to the highest standards

If the product does not perform as described on this datasheet, we will offer a refund or replacement. For full details of the Abpromise, please visit <https://www.abcam.co.jp/abpromise> or contact our technical team.

Terms and conditions

- Guarantee only valid for products bought direct from Abcam or one of our authorized distributors