

Anti-ITIH1/SHAP antibody ab70048

5 References [画像数 1](#)

製品の概要

製品名	Anti-ITIH1/SHAP antibody
製品の詳細	Mouse polyclonal to ITIH1/SHAP
由来種	Mouse
アプリケーション	適用あり: WB
種交差性	交差種: Human
免疫原	Recombinant full length protein within Human ITIH1/SHAP. The exact immunogen sequence used to generate this antibody is proprietary information. If additional detail on the immunogen is needed to determine the suitability of the antibody for your needs, please <u>contact</u> our Scientific Support team to discuss your requirements. Database link: <u>NP_002206.1</u>
ポジティブ・コントロール	ITIH1/SHAP transfected 293T cell lysate.
特記事項	<p>The Life Science industry has been in the grips of a reproducibility crisis for a number of years. Abcam is leading the way in addressing this with our range of recombinant monoclonal antibodies and knockout edited cell lines for gold-standard validation. Please check that this product meets your needs before purchasing.</p> <p>If you have any questions, special requirements or concerns, please send us an inquiry and/or contact our Support team ahead of purchase. Recommended alternatives for this product can be found below, along with publications, customer reviews and Q&As</p>

製品の特性

製品の状態	Liquid
保存方法	Shipped at 4°C. Upon delivery aliquot and store at -20°C or -80°C. Avoid repeated freeze / thaw cycles.
バッファー	pH: 7.40 Constituent: 100% PBS
精製度	Protein G purified
ポリ/モノ	ポリクローナル
アイソタイプ	IgG

アプリケーション

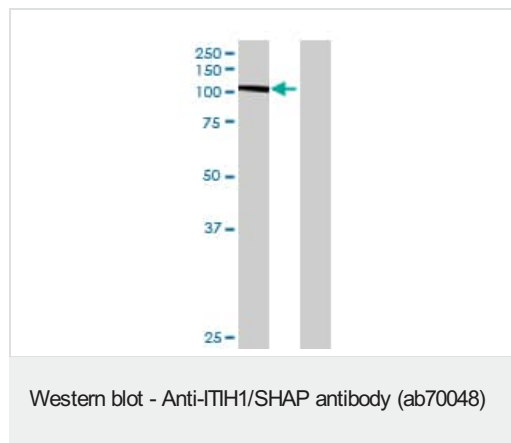
The Abpromise guarantee Abpromise保証は、次のテスト済みアプリケーションにおけるab70048の使用に適用されます
アプリケーションノートには、推奨の開始希釈率がありますが、適切な希釈率につきましてはご確認ください。

アプリケーション	Abreviews	特記事項
WB		1/500 - 1/1000. Detects a band of approximately 102 kDa (predicted molecular weight: 102 kDa).

ターゲット情報

機能	May act as a carrier of hyaluronan in serum or as a binding protein between hyaluronan and other matrix protein, including those on cell surfaces in tissues to regulate the localization, synthesis and degradation of hyaluronan which are essential to cells undergoing biological processes. Contains a potential peptide which could stimulate a broad spectrum of phagocytotic cells.
配列類似性	Belongs to the ITIH family. Contains 1 VIT domain. Contains 1 VWFA domain.
翻訳後修飾	Heavy chains are linked to bikunin via chondroitin 4-sulfate esterified to the alpha-carboxyl of the C-terminal aspartate after propeptide cleavage. The S-linked glycan is composed of two 6-carbon sugars, possibly Glc or Gal.
細胞内局在	Secreted.

画像



All lanes : Anti-ITIH1/SHAP antibody (ab70048) at 1/500 dilution

Lane 1 : ITIH1/SHAP transfected 293T cell lysate

Lane 2 : Non-transfected 293T cell lysate

Lysates/proteins at 25 µg per lane.

Secondary

Lane 1 : Goat Anti-Mouse IgG (H&L)-HRP at 1/2500 dilution

Lane 2 : Goat Anti-Mouse IgG (H&L)-HRP at 1/2500 dilution

Predicted band size: 102 kDa

Observed band size: 102 kDa

Please note: All products are "FOR RESEARCH USE ONLY. NOT FOR USE IN DIAGNOSTIC PROCEDURES"

Our Abpromise to you: Quality guaranteed and expert technical support

- Replacement or refund for products not performing as stated on the datasheet
- Valid for 12 months from date of delivery
- Response to your inquiry within 24 hours

- We provide support in Chinese, English, French, German, Japanese and Spanish
- Extensive multi-media technical resources to help you
- We investigate all quality concerns to ensure our products perform to the highest standards

If the product does not perform as described on this datasheet, we will offer a refund or replacement. For full details of the Abpromise, please visit <https://www.abcam.co.jp/abpromise> or contact our technical team.

Terms and conditions

- Guarantee only valid for products bought direct from Abcam or one of our authorized distributors