





Anti-ITIH1/SHAP antibody ab110822

画像数 4

製品の概要

製品名	Anti-ITIH1/SHAP antibody
製品の詳細	Rabbit polyclonal to ITIH1/SHAP
由来種	Rabbit
アプリケーション	適用あり: ICC/IF, IHC-P
種交差性	交差種: Mouse, Human 交差が予測される動物種: Chimpanzee 
免疫原	Synthetic peptide corresponding to ITIH1/SHAP.  Run BLAST with  Run BLAST with 
ポジティブ・コントロール	Recombinant Human ITIH1/SHAP protein (ab114721) can be used as a positive control in WB. Human OA chondrocyte tissue, mouse OA periosteum tissue ICC/IF: HepG2 cells
特記事項	<p>The Life Science industry has been in the grips of a reproducibility crisis for a number of years. Abcam is leading the way in addressing this with our range of recombinant monoclonal antibodies and knockout edited cell lines for gold-standard validation. Please check that this product meets your needs before purchasing.</p> <p>If you have any questions, special requirements or concerns, please send us an inquiry and/or contact our Support team ahead of purchase. Recommended alternatives for this product can be found below, along with publications, customer reviews and Q&As</p>

製品の特性

製品の状態	Liquid
保存方法	Shipped at 4°C. Upon delivery aliquot and store at -20°C. Avoid repeated freeze / thaw cycles.
バッファー	Preservative: 0.05% Sodium azide Constituents: 99% PBS, 0.1% BSA
精製度	Immunogen affinity purified
ポリ/モノ	ポリクローナル
アイソタイプ	IgG

アプリケーション

The Abpromise guarantee

Abpromise保証は、次のテスト済みアプリケーションにおけるab110822の使用に適用されます

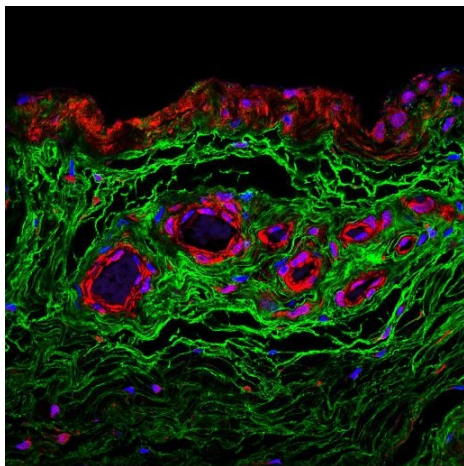
アプリケーションノートには、推奨の開始希釈率がありますが、適切な希釈率につきましてはご確認ください。

アプリケーション	Abreviews	特記事項
ICC/IF		Use a concentration of 2 µg/ml.
IHC-P		Use at an assay dependent concentration.

ターゲット情報

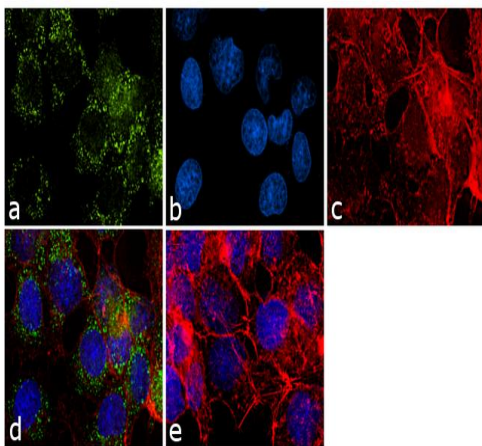
機能	May act as a carrier of hyaluronan in serum or as a binding protein between hyaluronan and other matrix protein, including those on cell surfaces in tissues to regulate the localization, synthesis and degradation of hyaluronan which are essential to cells undergoing biological processes. Contains a potential peptide which could stimulate a broad spectrum of phagocytotic cells.
配列類似性	Belongs to the ITIH family. Contains 1 VIT domain. Contains 1 VWFA domain.
翻訳後修飾	Heavy chains are linked to bikunin via chondroitin 4-sulfate esterified to the alpha-carboxyl of the C-terminal aspartate after propeptide cleavage. The S-linked glycan is composed of two 6-carbon sugars, possibly Glc or Gal.
細胞内局在	Secreted.

画像



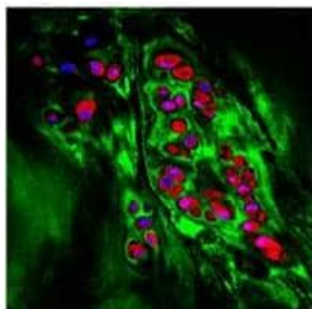
ab110822 staining ITIH1/SHAP in Human OA chondrocyte tissue by Immunohistochemistry Formalin-fixed, Paraffin-embedded tissue.
ITIH1/SHAP is stained in red, hyaluronan in green, and the nuclei in blue.

Immunohistochemistry (Formalin/PFA-fixed paraffin-embedded sections) - Anti-ITIH1/SHAP antibody (ab110822)



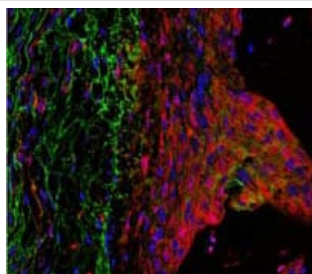
Immunocytochemistry/ Immunofluorescence - Anti-ITIH1/SHAP antibody (ab110822)

Immunofluorescence analysis of ITIH1 was performed using 70% confluent log phase HepG2 cells. The cells were fixed with 4% paraformaldehyde for 10 minutes, permeabilized with 0.1% Triton™ X-100 for 10 minutes, and blocked with 1% BSA for 1 hour at room temperature. The cells were labeled with ab110822 at 2µg/mL in 0.1% BSA and incubated for 3 hours at room temperature and then labeled with Goat anti-Rabbit IgG (H+L) Alexa Fluor® 488 conjugate at a dilution of 1:2000 for 45 minutes at room temperature (Panel a: green). Nuclei (Panel b: blue) were stained with DAPI. F-actin (Panel c: red) was stained with Rhodamine Phalloidin (1:300). Panel d represents the merged image showing cytoplasmic localization. Panel e shows the no primary antibody control. The images were captured at 60X magnification.



Immunohistochemistry (Formalin/PFA-fixed paraffin-embedded sections) - Anti-ITIH1/SHAP antibody (ab110822)

ab110822 staining ITIH1/SHAP in Human OA chondrocyte tissue by Immunohistochemistry Formalin-fixed, Paraffin-embedded tissue. ITIH1/SHAP is stained in red, hyaluronan in green, and the nuclei in blue.



Immunohistochemistry (Formalin/PFA-fixed paraffin-embedded sections) - Anti-ITIH1/SHAP antibody (ab110822)

ab110822 staining ITIH1/SHAP in Mouse OA periosteum tissue by Immunohistochemistry Formalin-fixed, Paraffin-embedded tissue. ITIH1/SHAP is stained in red, hyaluronan in green, and the nuclei in blue.

Our Abpromise to you: Quality guaranteed and expert technical support

- Replacement or refund for products not performing as stated on the datasheet
- Valid for 12 months from date of delivery
- Response to your inquiry within 24 hours
- We provide support in Chinese, English, French, German, Japanese and Spanish
- Extensive multi-media technical resources to help you
- We investigate all quality concerns to ensure our products perform to the highest standards

If the product does not perform as described on this datasheet, we will offer a refund or replacement. For full details of the Abpromise, please visit <https://www.abcam.co.jp/abpromise> or contact our technical team.

Terms and conditions

- Guarantee only valid for products bought direct from Abcam or one of our authorized distributors