

### Anti-Islet 1 antibody [EPR10362] - BSA and Azide free ab238919

KO 評価済 リコンビナント RabMAb

画像数 7

#### 製品の概要

製品名	Anti-Islet 1 antibody [EPR10362] - BSA and Azide free
製品の詳細	Rabbit monoclonal [EPR10362] to Islet 1 - BSA and Azide free
由来種	Rabbit
特異性	In western blot, we observe a specific band at ~40kDa which is not seen in KO cell lines. A cross-reactive band was observed in the wild-type and knockout cells. The additional band below this band of interest is seen at ~38kDa in both the WT and KO cells. We are unsure as to the identity of these extra bands.
アプリケーション	<b>適用あり:</b> WB, IHC-P, IP <b>適用なし:</b> Flow Cyt or ICC/IF
種交差性	<b>交差種:</b> Human <b>非交差種:</b> Mouse, Rat
免疫原	Recombinant fragment within Human Islet 1 aa 1 to the C-terminus. The exact sequence is proprietary. Database link: <a href="#">P61371</a>
ポジティブ・コントロール	WB: HeLa, K562, A431, A375, Jurkat and SH-SY5Y cell lysates. IHC-P: Human gastric neuroendocrine carcinoma, pancreas and small cell lung carcinoma tissues. IP: SH-SY5Y cell lysate.
特記事項	ab238919 is the carrier-free version of <a href="#">ab178400</a> .

Our **carrier-free** antibodies are typically supplied in a PBS-only formulation, purified and free of BSA, sodium azide and glycerol. The carrier-free buffer and high concentration allow for increased conjugation efficiency.

This conjugation-ready format is designed for use with fluorochromes, metal isotopes, oligonucleotides, and enzymes, which makes them ideal for antibody labelling, functional and cell-based assays, flow-based assays (e.g. mass cytometry) and Multiplex Imaging applications.

Use our [conjugation kits](#) for antibody conjugates that are ready-to-use in as little as 20 minutes with <1 minute hands-on-time and 100% antibody recovery: available for fluorescent dyes, HRP, biotin and gold.

This product is compatible with the Maxpar<sup>®</sup> Antibody Labeling Kit from Fluidigm, without the need for antibody preparation. Maxpar<sup>®</sup> is a trademark of Fluidigm Canada Inc.

This product is a recombinant monoclonal antibody, which offers several advantages including:

- High batch-to-batch consistency and reproducibility
- Improved sensitivity and specificity
- Long-term security of supply
- Animal-free production

For more information [see here](#).

Our RabMAb<sup>®</sup> technology is a patented hybridoma-based technology for making rabbit monoclonal antibodies. For details on our patents, please refer to [RabMAb<sup>®</sup> patents](#).

## 製品の特性

製品の状態	Liquid
保存方法	Shipped at 4°C. Store at +4°C. Do Not Freeze.
バッファー	pH: 7.2 Constituent: PBS
キャリア・フリー	はい
精製度	Protein A purified
ポリ/モノ	モノクローナル
クローン名	EPR10362
アイソタイプ	IgG

## アプリケーション

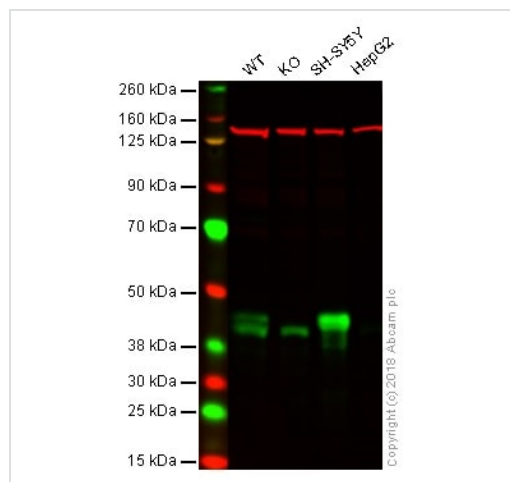
The Abpromise guarantee [Abpromise保証は](#)、次のテスト済みアプリケーションにおけるab238919の使用に適用されます  
アプリケーションノートには、推奨の開始希釈率がありますが、適切な希釈率につきましてはご検討ください。

アプリケーション	Abreviews	特記事項
WB		Use at an assay dependent concentration. Predicted molecular weight: 39 kDa.
IHC-P		Use at an assay dependent concentration. Perform heat mediated antigen retrieval before commencing with IHC staining protocol.
IP		Use at an assay dependent concentration.

追加情報 Is unsuitable for Flow Cyt or ICC/IF.

## ターゲット情報

機能	Binds to one of the cis-acting domain of the insulin gene enhancer.
組織特異性	Expressed in subsets of neurons of the adrenal medulla and dorsal root ganglion, inner nuclear and ganglion cell layers in the retina, the pineal and some regions of the brain.
配列類似性	Contains 1 homeobox DNA-binding domain. Contains 2 LIM zinc-binding domains.
細胞内局在	Nucleus.



Western blot - Anti-Islet 1 antibody [EPR10362] - BSA and Azide free (ab238919)

**Lanes 1-3 :** Anti-Islet 1 antibody [EPR10362] ([ab178400](#)) at 1/1000 dilution

**Lane 4 :** Anti-Islet 1 antibody [EPR10362] ([ab178400](#)) at 1000 µg

**Lane 1 :** Wild-type HAP1 whole cell lysate

**Lane 2 :** Islet 1 knockout HAP1 whole cell lysate

**Lane 3 :** SH-SY5Y whole cell lysate

**Lane 4 :** HepG2 whole cell lysate

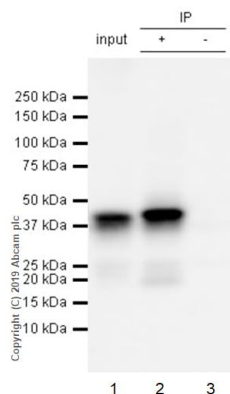
Lysates/proteins at 20 µg per lane.

**Predicted band size:** 39 kDa

**Lanes 1 - 4:** Merged signal (red and green). Green - [ab178400](#) observed at 40 kDa. Red - loading control, [ab18058](#), observed at 130 kDa.

[ab178400](#) was shown to recognize Islet 1 in wild-type HAP1 cells as signal was lost at the expected MW in Islet 1 knockout cells. Additional cross-reactive bands were observed in the wild-type and knockout cells. Wild-type and Islet 1 knockout samples were subjected to SDS-PAGE. Ab178400 and [ab18058](#) (Mouse anti-Vinculin loading control) were incubated overnight at 4°C at 1/1000 dilution and 1/20000 dilution respectively. Blots were developed with Goat anti-Rabbit IgG H&L (IRDye® 800CW) preabsorbed [ab216773](#) and Goat anti-Mouse IgG H&L (IRDye® 680RD) preabsorbed [ab216776](#) secondary antibodies at 1/20000 dilution for 1 hour at room temperature before imaging.

This data was developed using the same antibody clone in a different buffer formulation containing PBS, BSA, glycerol, and sodium azide ([ab178400](#)).



Immunoprecipitation - Anti-Islet 1 antibody  
[EPR10362] - BSA and Azide free (ab238919)

**ab178400** (purified ) at 1/20 dilution (1ug) immunoprecipitating Islet 1 in SH-SY5Y whole cell lysate.

**Lane 1 (input):** SH-SY5Y (Human neuroblastoma epithelial cell) whole cell lysate 10ug

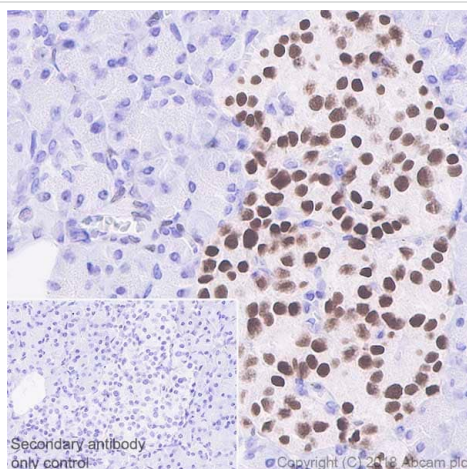
**Lane 2 (+):** **ab178400** & SH-SY5Y whole cell lysate

**Lane 3 (-):** Rabbit monoclonal IgG (**ab172730**) instead of **ab178400** in SH-SY5Y whole cell lysate

For western blotting, VeriBlot for IP Detection Reagent (HRP) (**ab131366**) was at 1/1000 dilution.

**Blocking and diluting buffer:** 5% NFDm/TBST.

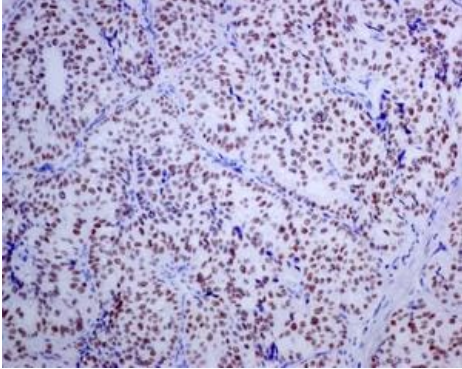
This data was developed using the same antibody clone in a different buffer formulation containing PBS, BSA, glycerol, and sodium azide (**ab178400**).



Immunohistochemistry (Formalin/PFA-fixed paraffin-embedded sections) - Anti-Islet 1 antibody  
[EPR10362] - BSA and Azide free (ab238919)

Immunohistochemistry (Formalin/PFA-fixed paraffin-embedded sections) analysis of human pancreas tissue sections labeling Islet 1 with purified **ab178400** at 1/6000 dilution (0.03 µg/ml). Perform heat mediated antigen retrieval using **ab93684** (Tris/EDTA buffer, pH 9.0). ImmunoHistoProbe one step HRP Polymer (ready to use) was used as the secondary antibody. Negative control: PBS instead of the primary antibody. Hematoxylin was used as a counterstain.

This data was developed using the same antibody clone in a different buffer formulation containing PBS, BSA, glycerol, and sodium azide (**ab178400**)

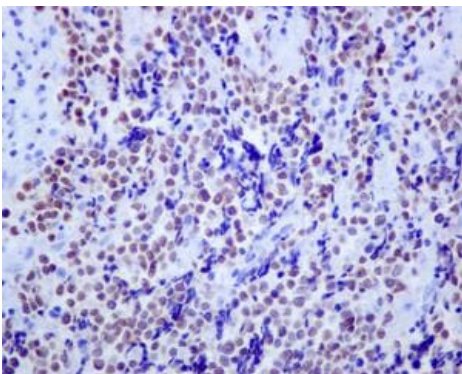


Immunohistochemistry (Formalin/PFA-fixed paraffin-embedded sections) - Anti-Islet 1 antibody [EPR10362] - BSA and Azide free (ab238919)

Immunohistochemical analysis of formalin-fixed, paraffin-embedded, Human gastric neuroendocrine carcinoma tissue labeling Islet 1 with **ab178400** at a 1/250 dilution.

This data was developed using the same antibody clone in a different buffer formulation containing PBS, BSA, glycerol, and sodium azide (**ab178400**).

Perform heat mediated antigen retrieval before commencing with IHC staining protocol.

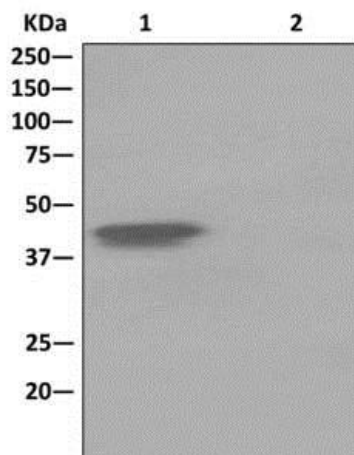


Immunohistochemistry (Formalin/PFA-fixed paraffin-embedded sections) - Anti-Islet 1 antibody [EPR10362] - BSA and Azide free (ab238919)

Immunohistochemical analysis of formalin-fixed, paraffin-embedded, Human small cell lung carcinoma tissue labeling Islet 1 with **ab178400** at a 1/250 dilution.

This data was developed using the same antibody clone in a different buffer formulation containing PBS, BSA, glycerol, and sodium azide (**ab178400**).

Perform heat mediated antigen retrieval before commencing with IHC staining protocol.



Immunoprecipitation - Anti-Islet 1 antibody  
[EPR10362] - BSA and Azide free (ab238919)

Western blot analysis on Immunoprecipitation pellet from either 1) SH-SY5Y cell lysate, or 2) 1xPBS (negative control); showing Islet 1, using **ab178400** at 1/10 dilution and HRP-conjugated anti-rabbit IgG preferentially detecting the non-reduced form of rabbit IgG.

This data was developed using the same antibody clone in a different buffer formulation containing PBS, BSA, glycerol, and sodium azide (**ab178400**).

#### Why choose a recombinant antibody?



**Research with confidence**  
Consistent and reproducible results



**Long-term and scalable supply**  
Recombinant technology



**Success from the first experiment**  
Confirmed specificity



**Ethical standards compliant**  
Animal-free production

Anti-Islet 1 antibody [EPR10362] - BSA and Azide free (ab238919)

**Please note:** All products are "FOR RESEARCH USE ONLY. NOT FOR USE IN DIAGNOSTIC PROCEDURES"

**Our Abpromise to you: Quality guaranteed and expert technical support**

- Replacement or refund for products not performing as stated on the datasheet
- Valid for 12 months from date of delivery
- Response to your inquiry within 24 hours
- We provide support in Chinese, English, French, German, Japanese and Spanish
- Extensive multi-media technical resources to help you
- We investigate all quality concerns to ensure our products perform to the highest standards

If the product does not perform as described on this datasheet, we will offer a refund or replacement. For full details of the Abpromise, please visit <https://www.abcam.co.jp/abpromise> or contact our technical team.

#### **Terms and conditions**

---

- Guarantee only valid for products bought direct from Abcam or one of our authorized distributors