

Product datasheet

Anti-Islet 1 antibody [1B1] ab86501

KO 評価済

★★★★★ [2 Abreviews](#) [5 References](#) [画像数 5](#)

製品の概要

製品名	Anti-Islet 1 antibody [1B1]
製品の詳細	Mouse monoclonal [1B1] to Islet 1
由来種	Mouse
特異性	In western blot, we observe a specific band at ~40kDa which is not seen in KO cell lines. A cross-reactive band was observed in the wild-type and knockout cells. The additional band below this band of interest is seen at ~38kDa in both the WT and KO cells. We are unsure as to the identity of these extra bands.
アプリケーション	適用あり: Flow Cyt, IHC-P, WB, ICC/IF
種交差性	交差種: Human, Recombinant fragment
免疫原	Recombinant fragment corresponding to Human Islet 1 aa 150-349. Purified recombinant fragment expressed in E. Coli. Database link: P61371
ポジティブ・コントロール	WB: Full length Islet 1 (aa 1-349)-hlgGFc transfected HEK293 cell lysate. ICC/IF: HEK293 cells transfected with full length Islet 1-hlgGFc. IHC-P (FFPE): Human Pancreas (Normal) tissue.
特記事項	<p>This product was changed from ascites to supernatant. Lot no's higher than GR291482-3 are from Tissue Culture Supernatant.</p> <p>The Life Science industry has been in the grips of a reproducibility crisis for a number of years. Abcam is leading the way in addressing this with our range of recombinant monoclonal antibodies and knockout edited cell lines for gold-standard validation. Please check that this product meets your needs before purchasing.</p> <p>If you have any questions, special requirements or concerns, please send us an inquiry and/or contact our Support team ahead of purchase. Recommended alternatives for this product can be found below, along with publications, customer reviews and Q&As</p>

製品の特性

製品の状態	Liquid
保存方法	Shipped at 4°C. Upon delivery aliquot and store at -20°C. Avoid freeze / thaw cycles.
バッファー	Preservative: 0.05% Sodium azide Constituent: PBS

精製度	Protein G purified
特記事項(精製)	Purified from tissue culture supernatant.
ポリ/モノ	モノクローナル
クローン名	1B1
アイソタイプ	IgG1

アプリケーション

The Abpromise guarantee Abpromise保証は、次のテスト済みアプリケーションにおけるab86501の使用に適用されます

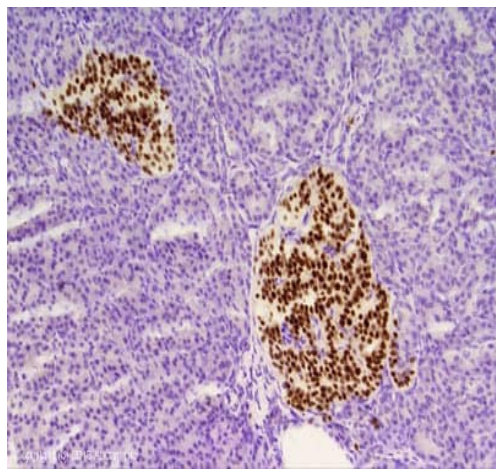
アプリケーションノートには、推奨の開始希釈率がありますが、適切な希釈率につきましてはご検討ください。

アプリケーション	Abreviews	特記事項
Flow Cyt		Use 1-2µg for 10 ⁶ cells. ab170190 - Mouse monoclonal IgG1, is suitable for use as an isotype control with this antibody.
IHC-P		1/1000. Perform heat mediated antigen retrieval with citrate buffer pH 6 before commencing with IHC staining protocol.
WB		1/500 - 1/2000. Predicted molecular weight: 39 kDa.
ICC/IF		1/200 - 1/1000.

ターゲット情報

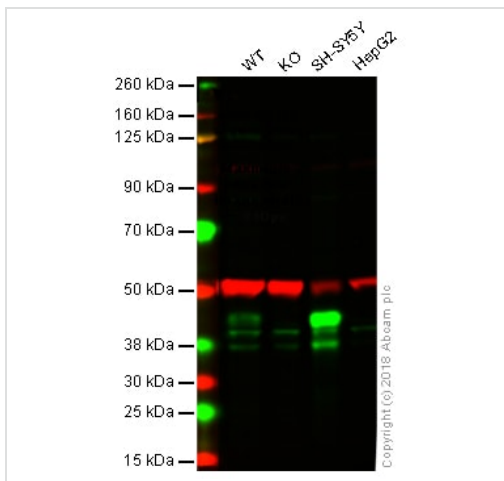
機能	Binds to one of the cis-acting domain of the insulin gene enhancer.
組織特異性	Expressed in subsets of neurons of the adrenal medulla and dorsal root ganglion, inner nuclear and ganglion cell layers in the retina, the pineal and some regions of the brain.
配列類似性	Contains 1 homeobox DNA-binding domain. Contains 2 LIM zinc-binding domains.
細胞内局在	Nucleus.

画像



Immunohistochemistry (Formalin/PFA-fixed paraffin-embedded sections) - Anti-Islet 1 antibody [1B1] (ab86501)

IHC image of Islet 1 staining in Human Pancreas formalin fixed paraffin embedded tissue section, performed on a Leica Bond system using the standard protocol F. The section was pre-treated using heat mediated antigen retrieval with sodium citrate buffer (pH6, epitope retrieval solution 1) for 20 mins. The section was then incubated with ab86501, 1/1000 dilution, for 15 mins at room temperature and detected using an HRP conjugated compact polymer system. DAB was used as the chromogen. The section was then counterstained with haematoxylin and mounted with DPX.



Western blot - Anti-Islet 1 antibody [1B1] (ab86501)

All lanes : Anti-Islet 1 antibody [1B1] (ab86501) at 1/500 dilution

Lane 1 : Wild-type HAP1 whole cell lysate

Lane 2 : Islet 1 knockout HAP1 whole cell lysate

Lane 3 : SH-SY5Y whole cell lysate

Lane 4 : HepG2 whole cell lysate

Lysates/proteins at 20 µg per lane.

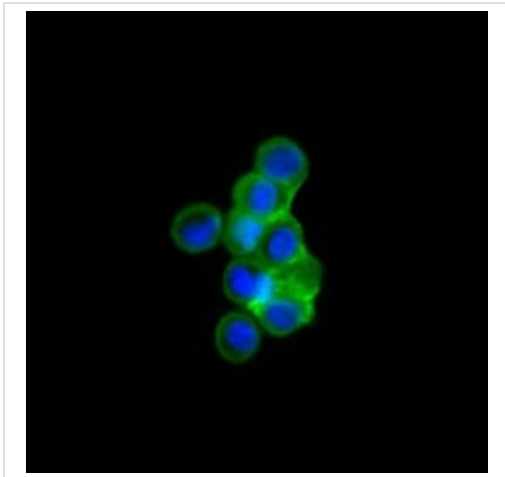
Predicted band size: 39 kDa

Observed band size: 40 kDa

Lanes 1 - 4: Merged signal (red and green). Green - ab86501 observed at 40 kDa. Red - loading control, **ab176560**, observed at 50 kDa.

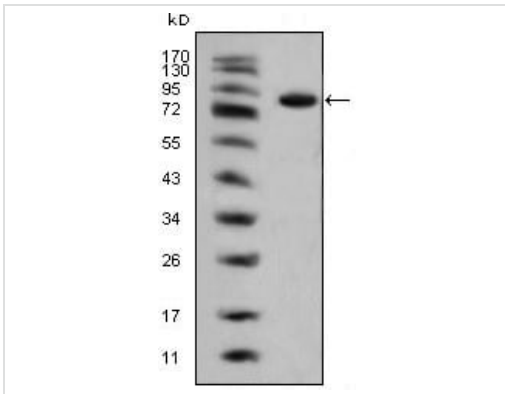
ab86501 was shown to recognize Islet 1 in wild-type HAP1 cells as signal was lost at the expected MW in Islet 1 knockout cells.

Additional cross-reactive bands were observed in the wild-type and knockout cells. Wild-type and Islet 1 knockout samples were subjected to SDS-PAGE. ab86501 and **ab176560** (Rabbit anti-alpha Tubulin loading control) were incubated overnight at 4°C at 1/500 dilution and 1/20000 dilution respectively. Blots were developed with Goat anti-Mouse IgG H&L (IRDye® 800CW) preabsorbed **ab216772** and Goat anti-Rabbit IgG H&L (IRDye® 680RD) preabsorbed **ab216777** secondary antibodies at 1/20000 dilution for 1 hour at room temperature before imaging.



Confocal immunofluorescence analysis of HEK293 cells transfected with full-length Islet 1-hlgGFc using ab86501 at 1/150 dilution (green). Blue: DRAQ5 fluorescent DNA dye.

Immunocytochemistry/ Immunofluorescence - Anti-Islet 1 antibody [1B1] (ab86501)



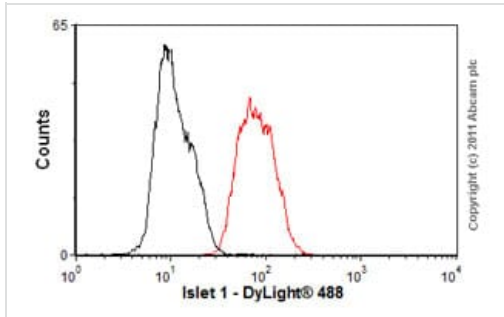
Anti-Islet 1 antibody [1B1] (ab86501) at 1/500 dilution + full length Islet 1-hlgGFc transfected HEK293 cell lysate

Predicted band size: 39 kDa

Observed band size: 80 kDa

Western blot - Anti-Islet 1 antibody [1B1] (ab86501)

Note: The molecular weight is larger than expected, as the recombinant protein is not the endogenous protein, but rather the fc-fusion protein.



Flow Cytometry - Anti-Islet 1 antibody [1B1]
(ab86501)

Overlay histogram showing SH-SY5Y cells stained with ab86501 (red line). The cells were fixed with 80% methanol (5 min) and then permeabilized with 0.1% PBS-Tween for 20 min. The cells were then incubated in 1x PBS / 10% normal goat serum / 0.3M glycine to block non-specific protein-protein interactions followed by the antibody (ab86501, 1µg/1x10⁶ cells) for 30 min at 22°C. The secondary antibody used was DyLight® 488 goat anti-mouse IgG (H+L) ([ab96879](#)) at 1/500 dilution for 30 min at 22°C. Isotype control antibody (black line) was mouse IgG1 [ICIGG1] ([ab91353](#), 2µg/1x10⁶ cells) used under the same conditions. Acquisition of >5,000 events was performed. This antibody gave a positive result in SH-SY5Y cells fixed with 4% paraformaldehyde (10 min)/permeabilized in 0.1% PBS-Tween for 20 min used under the same conditions.

Please note: All products are "FOR RESEARCH USE ONLY. NOT FOR USE IN DIAGNOSTIC PROCEDURES"

Our Abpromise to you: Quality guaranteed and expert technical support

- Replacement or refund for products not performing as stated on the datasheet
- Valid for 12 months from date of delivery
- Response to your inquiry within 24 hours
- We provide support in Chinese, English, French, German, Japanese and Spanish
- Extensive multi-media technical resources to help you
- We investigate all quality concerns to ensure our products perform to the highest standards

If the product does not perform as described on this datasheet, we will offer a refund or replacement. For full details of the Abpromise, please visit <https://www.abcam.co.jp/abpromise> or contact our technical team.

Terms and conditions

- Guarantee only valid for products bought direct from Abcam or one of our authorized distributors