

Anti-IP10 antibody ab9938

★★★★★ [3 Abreviews](#) [9 References](#) [画像数 1](#)

製品の概要

製品名	Anti-IP10 antibody
製品の詳細	Rabbit polyclonal to IP10
由来種	Rabbit
特異性	This antibody does not cross-react with murine CXCL9 and CXCL11.
アプリケーション	適用あり: WB
種交差性	交差種: Mouse
免疫原	Recombinant full length protein corresponding to Mouse IP10. Highly pure (>98%) recombinant mIP-10 (mouse Interferon Inducible Protein 10) Database link: P17515
ポジティブ・コントロール	Recombinant mouse IP10 protein (ab9944) can be used as a positive control in WB.
特記事項	<p>The Life Science industry has been in the grips of a reproducibility crisis for a number of years. Abcam is leading the way in addressing this with our range of recombinant monoclonal antibodies and knockout edited cell lines for gold-standard validation. Please check that this product meets your needs before purchasing.</p> <p>If you have any questions, special requirements or concerns, please send us an inquiry and/or contact our Support team ahead of purchase. Recommended alternatives for this product can be found below, along with publications, customer reviews and Q&As</p>

製品の特性

製品の状態	Lyophilized:Reconstitute with 200µl of sterile water.
保存方法	Shipped at 4°C. Store at +4°C short term (1-2 weeks). Upon delivery aliquot. Store at -20°C long term.
バッファー	No preservative, sterile filtered
精製度	Immunogen affinity purified
ポリ/モノ	ポリクローナル
アイソタイプ	unknown
軽鎖の種類	unknown

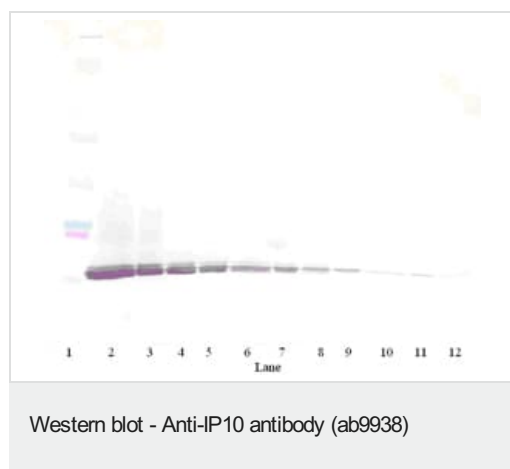
The Abpromise guarantee Abpromise保証は、 次のテスト済みアプリケーションにおけるab9938の使用に適用されます
アプリケーションノートには、推奨の開始希釈率がありますが、適切な希釈率につきましてはご検討ください。

アプリケーション	Abreviews	特記事項
WB	★★★★★ (1)	Use at an assay dependent concentration. To detect mIP-10 by Western Blot analysis this antibody can be used at a concentration of 0.1 - 0.2 µg/ml. Used in conjunction with compatible secondary reagents the detection limit for recombinant mIP-10 is 1.5 - 3.0 ng/lane, under either reducing or non-reducing conditions.

ターゲット情報

機能	Chemotactic for monocytes and T-lymphocytes. Binds to CXCR3.
配列類似性	Belongs to the intercrine alpha (chemokine CxC) family.
翻訳後修飾	CXCL10(1-73) is produced by proteolytic cleavage after secretion from keratinocytes.
細胞内局在	Secreted.

画像



Western blot performed with ab9938 at 0.2 ug/ml
 Lane 1: MultiMark MultiColor Standard (Invitrogen)
 Lane 2: 250 ng Murine IP-10
 Lane 3: 125 ng Murine IP-10
 Lane 4: 62.5 ng Murine IP-10
 Lane 5: 31.25 ng Murine IP-10
 Lane 6: 15.625 ng Murine IP-10
 Lane 7: 7.8 ng Murine IP-10
 Lane 8: 3.9 ng Murine IP-10
 Lane 9: 1.95 ng Murine IP-10
 Lane 10: 0.975 ng Murine IP-10
 Lane 11: 0.4875 ng Murine IP-10
 Lane 12: 0.24 ng Murine IP-10

Please note: All products are "FOR RESEARCH USE ONLY. NOT FOR USE IN DIAGNOSTIC PROCEDURES"

Our Abpromise to you: Quality guaranteed and expert technical support

- Replacement or refund for products not performing as stated on the datasheet
- Valid for 12 months from date of delivery
- Response to your inquiry within 24 hours

- We provide support in Chinese, English, French, German, Japanese and Spanish
- Extensive multi-media technical resources to help you
- We investigate all quality concerns to ensure our products perform to the highest standards

If the product does not perform as described on this datasheet, we will offer a refund or replacement. For full details of the Abpromise, please visit <https://www.abcam.co.jp/abpromise> or contact our technical team.

Terms and conditions

- Guarantee only valid for products bought direct from Abcam or one of our authorized distributors