

### Anti-Involucrin antibody [EPR13054] ab181980

リコンビナント **RabMAb**

★★★★★ **1 Abreviews** **2 References** 画像数 6

#### 製品の概要

製品名	Anti-Involucrin antibody [EPR13054]
製品の詳細	Rabbit monoclonal [EPR13054] to Involucrin
由来種	Rabbit
特異性	Unsuitable for rat IHC-P.
アプリケーション	<b>適用あり:</b> Flow Cyt (Intra), IHC-P, WB
種交差性	<b>交差種:</b> Rat, Human
免疫原	Synthetic peptide. This information is proprietary to Abcam and/or its suppliers.
ポジティブ・コントロール	SW480 and Human fetal skin lysates; Human skin and tonsil tissues; HUVEC cells.
特記事項	<p>This product is a recombinant monoclonal antibody, which offers several advantages including:</p> <ul style="list-style-type: none"> <li>- High batch-to-batch consistency and reproducibility</li> <li>- Improved sensitivity and specificity</li> <li>- Long-term security of supply</li> <li>- Animal-free production</li> </ul> <p>For more information <a href="#">see here</a>.</p> <p>Our RabMAb<sup>®</sup> technology is a patented hybridoma-based technology for making rabbit monoclonal antibodies. For details on our patents, please refer to <a href="#">RabMAb<sup>®</sup> patents</a>.</p>

#### 製品の特性

製品の状態	Liquid
保存方法	Shipped at 4°C. Store at +4°C short term (1-2 weeks). Upon delivery aliquot. Store at -20°C long term. Avoid freeze / thaw cycle.
バッファー	Preservative: 0.01% Sodium azide Constituents: 59% PBS, 40% Glycerol (glycerin, glycerine), 0.05% BSA
精製度	Tissue culture supernatant
ポリ/モノ	モノクローナル
クローン名	EPR13054
アイソタイプ	IgG

## アプリケーション

### The Abpromise guarantee

**Abpromise保証は、**次のテスト済みアプリケーションにおけるab181980の使用に適用されます

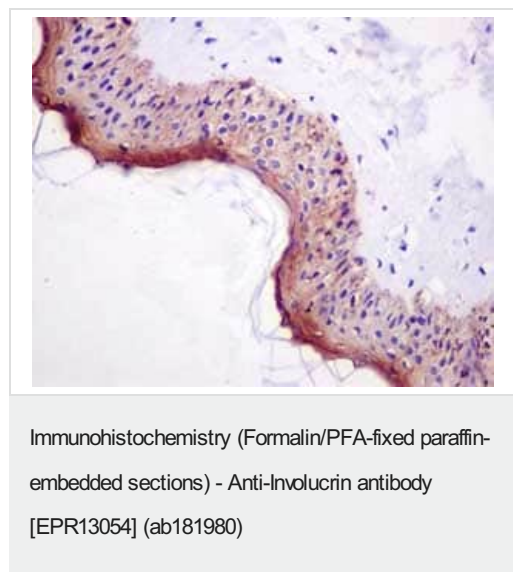
アプリケーションノートには、推奨の開始希釈率がありますが、適切な希釈率につきましてはご検討ください。

アプリケーション	Abreviews	特記事項
Flow Cyt (Intra)		1/10. <b>ab172730</b> - Rabbit monoclonal IgG, is suitable for use as an isotype control with this antibody.
IHC-P		1/100. Perform heat mediated antigen retrieval with Tris/EDTA buffer pH 9.0 before commencing with IHC staining protocol.
WB		1/10000 - 1/50000. Detects a band of approximately 120 kDa (predicted molecular weight: 68 kDa).

## ターゲット情報

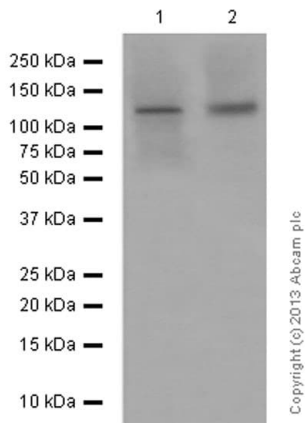
機能	Part of the insoluble cornified cell envelope (CE) of stratified squamous epithelia.
組織特異性	Keratinocytes of epidermis and other stratified squamous epithelia.
配列類似性	Belongs to the involucrin family.
翻訳後修飾	Substrate of transglutaminase. Some glutamines and lysines are cross-linked to other involucrin molecules, to other proteins such as keratin, desmoplakin, periplakin and envoplakin, and to lipids like omega-hydroxyceramide.
細胞内局在	Cytoplasm. Constituent of the scaffolding of the cornified envelope.

## 画像



Immunohistochemical analysis of paraffin-embedded Human skin tissue labeling Involucrin with ab181980 at 1/100 dilution, followed by prediluted ImmunoHistoprobe (Ready to use) HRP Polymer for Rabbit IgG. Counter stained with Hematoxylin.

Perform heat mediated antigen retrieval with EDTA buffer pH 9 before commencing with IHC staining protocol.



Western blot - Anti-Involucrin antibody [EPR13054]  
(ab181980)

**All lanes :** Anti-Involucrin antibody [EPR13054] (ab181980) at 1/500000 dilution

**Lane 1 :** HaCaT (Human keratinocyte cell line) whole cell lysate

**Lane 2 :** A431 (Human epidermoid carcinoma cell line) whole cell lysate

Lysates/proteins at 10 µg per lane.

#### Secondary

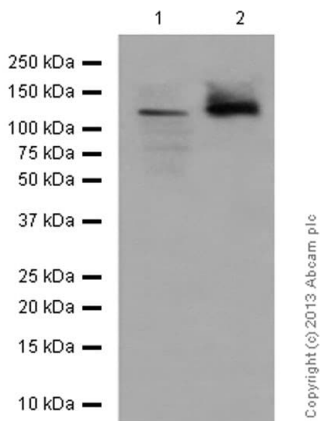
**All lanes :** Anti-Rabbit IgG (HRP), specific to the non-reduced form of IgG at 1/1000 dilution

**Predicted band size:** 68 kDa

**Observed band size:** 120 kDa

**Exposure time:** 1 minute

**Diluting and blocking buffer:** 5% NFDM/TBST



Western blot - Anti-Involucrin antibody [EPR13054]  
(ab181980)

**All lanes :**

**Lane 1 :** Human fetal skin tissue

**Lane 2 :** Rat skin tissue

Lysates/proteins at 10 µg per lane.

#### Secondary

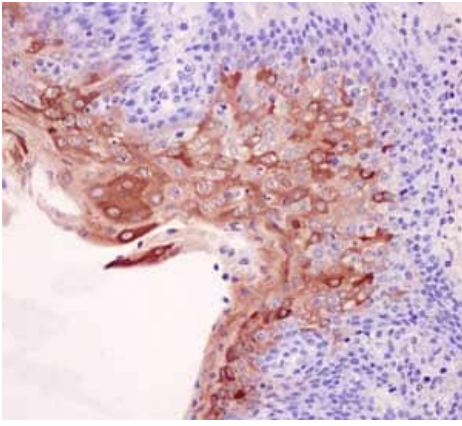
**All lanes :** Anti-Rabbit IgG (HRP), specific to the non-reduced form of IgG at 1/1000 dilution

**Predicted band size:** 68 kDa

**Observed band size:** 120 kDa

**Exposure time:** 1 minute

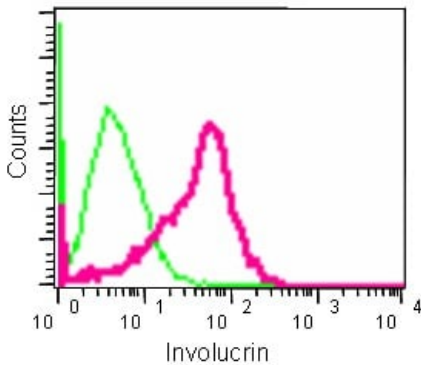
**Diluting and blocking buffer:** 5% NFDM/TBST



Immunohistochemistry (Formalin/PFA-fixed paraffin-embedded sections) - Anti-Involucrin antibody [EPR13054] (ab181980)

Immunohistochemical analysis of paraffin-embedded Human tonsil tissue labeling Involucrin with ab181980 at 1/100 dilution, followed by prediluted ImmunoHistoprobe (Ready to use) HRP Polymer for Rabbit IgG. Counter stained with Hematoxylin.

Perform heat mediated antigen retrieval with EDTA buffer pH 9 before commencing with IHC staining protocol.



Flow Cytometry (Intracellular) - Anti-Involucrin antibody [EPR13054] (ab181980)

Intracellular flow cytometric analysis of 2% paraformaldehyde-fixed HUVEC cells labeling Involucrin with ab181980 at 1/10 dilution (red) compared to a Rabbit monoclonal IgG Isotype control (green), followed by Goat anti rabbit IgG (FITC) secondary antibody at 1/150 dilution.

#### Why choose a recombinant antibody?

-  **Research with confidence**  
Consistent and reproducible results
-  **Long-term and scalable supply**  
Recombinant technology
-  **Success from the first experiment**  
Confirmed specificity
-  **Ethical standards compliant**  
Animal-free production

Anti-Involucrin antibody [EPR13054] (ab181980)

### **Our Abpromise to you: Quality guaranteed and expert technical support**

---

- Replacement or refund for products not performing as stated on the datasheet
- Valid for 12 months from date of delivery
- Response to your inquiry within 24 hours
- We provide support in Chinese, English, French, German, Japanese and Spanish
- Extensive multi-media technical resources to help you
- We investigate all quality concerns to ensure our products perform to the highest standards

If the product does not perform as described on this datasheet, we will offer a refund or replacement. For full details of the Abpromise, please visit <https://www.abcam.co.jp/abpromise> or contact our technical team.

### **Terms and conditions**

---

- Guarantee only valid for products bought direct from Abcam or one of our authorized distributors