


### Anti-Interferon beta antibody ab85803

★★★★★ [1 Abreviews](#) [5 References](#) [画像数 2](#)

#### 製品の概要

製品名	Anti-Interferon beta antibody
製品の詳細	Rabbit polyclonal to Interferon beta
由来種	Rabbit
特異性	From Jan 2024, QC testing of replenishment batches of this polyclonal changed. All tested and expected application and reactive species combinations are still covered by our Abcam product promise. However, we no longer test all applications. For more information on a specific batch, please contact our Scientific Support who will be happy to help.
アプリケーション	<b>適用あり:</b> WB, ICC/IF
種交差性	<b>交差種:</b> Human <b>交差が予測される動物種:</b> Mouse, Macaque monkey 
免疫原	Synthetic peptide corresponding to Human Interferon beta aa 1-100 conjugated to keyhole limpet haemocyanin.
ポジティブ・コントロール	Recombinant human Interferon beta protein ( <a href="#">ab71475</a> ) can be used as a positive control in WB. This antibody gave a positive signal in HepG2 and WI38 whole cell lysates and in the following human tissue lysates: Liver; Lung; Kidney; Spleen.
特記事項	<p>The Life Science industry has been in the grips of a reproducibility crisis for a number of years. Abcam is leading the way in addressing this with our range of recombinant monoclonal antibodies and knockout edited cell lines for gold-standard validation. Please check that this product meets your needs before purchasing.</p> <p>If you have any questions, special requirements or concerns, please send us an inquiry and/or contact our Support team ahead of purchase. Recommended alternatives for this product can be found below, along with publications, customer reviews and Q&amp;As</p>

#### 製品の特性

製品の状態	Liquid
保存方法	Shipped at 4°C. Store at +4°C short term (1-2 weeks). Upon delivery aliquot. Store at -20°C or -80°C. Avoid freeze / thaw cycle.
バッファー	pH: 7.40 Preservative: 0.02% Sodium azide Constituent: PBS

Batches of this product that have a concentration < 1mg/ml may have BSA added as a stabilising agent. If you would like information about the formulation of a specific lot, please contact our scientific support team who will be happy to help.

精製度	Immunogen affinity purified
ポリ/モノ	ポリクローナル
アイソタイプ	IgG

## アプリケーション

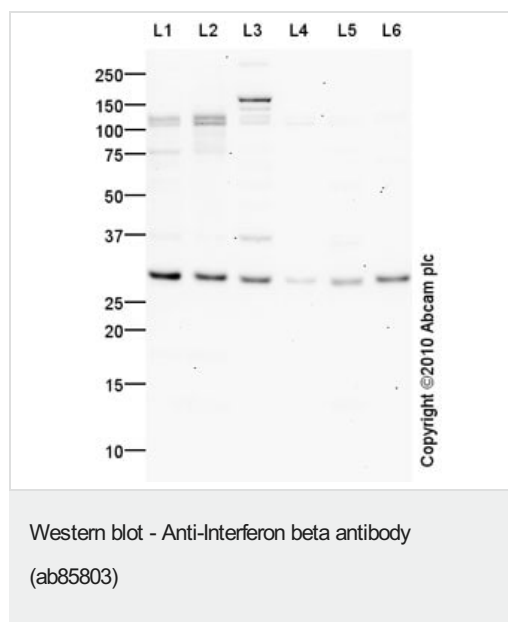
**The Abpromise guarantee** **Abpromise保証は、次のテスト済みアプリケーションにおけるab85803の使用に適用されます**  
アプリケーションノートには、推奨の開始希釈率がありますが、適切な希釈率につきましてはご検討ください。

アプリケーション	Abreviews	特記事項
WB	★★★★★ (1)	Use a concentration of 1 µg/ml. Detects a band of approximately 30 kDa (predicted molecular weight: 22 kDa).
ICC/IF		Use a concentration of 1 µg/ml.

## ターゲット情報

機能	Has antiviral, antibacterial and anticancer activities.
配列類似性	Belongs to the alpha/beta interferon family.
細胞内局在	Secreted.

## 画像



**All lanes :** Anti-Interferon beta antibody (ab85803) at 1 µg/ml

**Lane 1 :** HepG2 (Human hepatocellular liver carcinoma cell line)

Whole Cell Lysate

**Lane 2 :** WI-38 whole cell lysate ([ab3960](#))

**Lane 3 :** Human liver tissue lysate - total protein ([ab29889](#))

**Lane 4 :** Lung (Human) Tissue Lysate

**Lane 5 :** Human kidney tissue lysate - total protein ([ab30203](#))

**Lane 6 :** Human spleen tissue lysate - total protein ([ab29699](#))

Lysates/proteins at 10 µg per lane.

### Secondary

**All lanes :** Goat polyclonal to Rabbit IgG - H&L - Pre-Adsorbed (HRP) at 1/3000 dilution

Developed using the ECL technique.

Performed under reducing conditions.

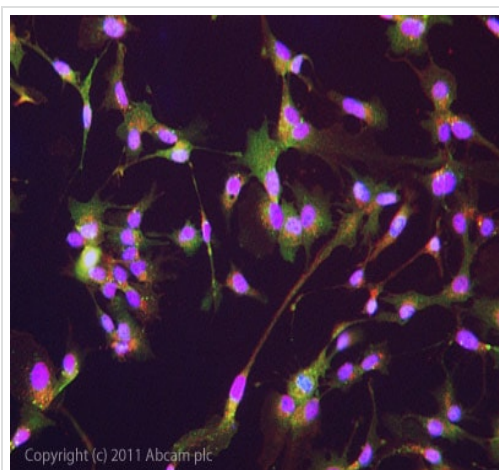
**Predicted band size:** 22 kDa

**Observed band size:** 30 kDa

**Additional bands at:** 110 kDa, 120 kDa, 160 kDa, 37 kDa. We are unsure as to the identity of these extra bands.

**Exposure time:** 20 minutes

The Interferon Beta protein sequence contains both a phosphorylation and a glycosylation site (Swissprot). Post-translation modifications could account for the migration of the band at a higher molecular weight than predicted.



ICC/IF image of ab85803 stained HepG2 cells. The cells were 4% PFA fixed (10 min) and then incubated in 1%BSA / 10% normal goat serum / 0.3M glycine in 0.1% PBS-Tween for 1h to permeabilise the cells and block non-specific protein-protein interactions. The cells were then incubated with the antibody (ab85803, 5µg/ml) overnight at +4°C. The secondary antibody (green) was [ab96899](#) Dylight 488 goat anti-rabbit IgG (H+L) used at a 1/250 dilution for 1h. Alexa Fluor® 594 WGA was used to label plasma membranes (red) at a 1/200 dilution for 1h. DAPI was used to stain the cell nuclei (blue) at a concentration of 1.43µM.

Immunocytochemistry/ Immunofluorescence - Anti-Interferon beta antibody (ab85803)

**Please note:** All products are "FOR RESEARCH USE ONLY. NOT FOR USE IN DIAGNOSTIC PROCEDURES"

### Our Abpromise to you: Quality guaranteed and expert technical support

- Replacement or refund for products not performing as stated on the datasheet
- Valid for 12 months from date of delivery
- Response to your inquiry within 24 hours
- We provide support in Chinese, English, French, German, Japanese and Spanish
- Extensive multi-media technical resources to help you
- We investigate all quality concerns to ensure our products perform to the highest standards

If the product does not perform as described on this datasheet, we will offer a refund or replacement. For full details of the Abpromise, please visit <https://www.abcam.co.jp/abpromise> or contact our technical team.

#### **Terms and conditions**

---

- Guarantee only valid for products bought direct from Abcam or one of our authorized distributors