

Anti-Integrin alpha 6 antibody [EPR5578] - BSA and Azide free ab248060

KO 評価済 リコンビナント RabMAb

画像数 5

製品の概要

製品名	Anti-Integrin alpha 6 antibody [EPR5578] - BSA and Azide free
製品の詳細	Rabbit monoclonal [EPR5578] to Integrin alpha 6 - BSA and Azide free
由来種	Rabbit
アプリケーション	適用あり: WB 適用なし: Flow Cyt, ICC/IF or IHC-P
種交差性	交差種: Human
免疫原	Synthetic peptide. This information is proprietary to Abcam and/or its suppliers.
ポジティブ・コントロール	WB: SW480, HEK293, HT-1376, JAR and human platelet lysates.
特記事項	<p>ab248060 is the carrier-free version of ab124924.</p> <p>Our carrier-free antibodies are typically supplied in a PBS-only formulation, purified and free of BSA, sodium azide and glycerol. The carrier-free buffer and high concentration allow for increased conjugation efficiency.</p> <p>This conjugation-ready format is designed for use with fluorochromes, metal isotopes, oligonucleotides, and enzymes, which makes them ideal for antibody labelling, functional and cell-based assays, flow-based assays (e.g. mass cytometry) and Multiplex Imaging applications.</p> <p>Use our conjugation kits for antibody conjugates that are ready-to-use in as little as 20 minutes with <1 minute hands-on-time and 100% antibody recovery: available for fluorescent dyes, HRP, biotin and gold.</p> <p>This product is compatible with the Maxpar[®] Antibody Labeling Kit from Fluidigm, without the need for antibody preparation. Maxpar[®] is a trademark of Fluidigm Canada Inc.</p> <p>This product is a recombinant monoclonal antibody, which offers several advantages including:</p> <ul style="list-style-type: none"> - High batch-to-batch consistency and reproducibility - Improved sensitivity and specificity - Long-term security of supply - Animal-free production <p>For more information see here.</p> <p>Our RabMAb[®] technology is a patented hybridoma-based technology for making rabbit monoclonal antibodies. For details on our patents, please refer to RabMAb[®] patents.</p>

Mouse, Rat: We have preliminary internal testing data to indicate this antibody may not react with these species. Please contact us for more information.

製品の特性

製品の状態

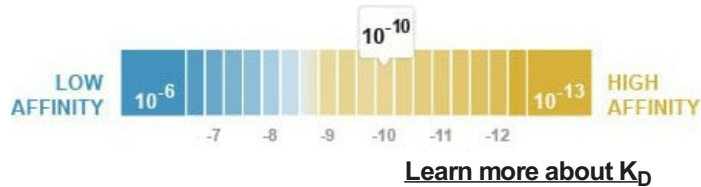
Liquid

保存方法

Shipped at 4°C. Store at +4°C. Do Not Freeze.

解離定数 (K_D 値)

$K_D = 2.29 \times 10^{-10}$ M



バッファー

pH: 7.2

Constituent: PBS

キャリア・フリー

はい

精製度

Protein A purified

ポリ/モノ

モノクローナル

クローン名

EPR5578

アイソタイプ

IgG

アプリケーション

The Abpromise guarantee

Abpromise保証は、次のテスト済みアプリケーションにおけるab248060の使用に適用されます

アプリケーションノートには、推奨の開始希釈率がありますが、適切な希釈率につきましてはご検討ください。

アプリケーション	Abreviews	特記事項
WB		Use at an assay dependent concentration. Detects a band of approximately 126 kDa (predicted molecular weight: 126 kDa).

追加情報

Is unsuitable for Flow Cyt, ICC/IF or IHC-P.

ターゲット情報

機能

Integrin alpha-6/beta-1 is a receptor for laminin on platelets. Integrin alpha-6/beta-4 is a receptor for laminin in epithelial cells and it plays a critical structural role in the hemidesmosome (By similarity). ITGA6:ITGB4 binds to NRG1 (via EGF domain) and this binding is essential for NRG1-ERBB signaling (PubMed:20682778). ITGA6:ITGB4 binds to IGF1 and this binding is essential for IGF1 signaling (PubMed:22351760).

組織特異性

Integrin alpha-6/beta-4 is predominantly expressed by epithelia. Isoforms containing segment X1 are ubiquitously expressed. Isoforms containing segment X1X2 are expressed in heart, kidney, placenta, colon, duodenum, myoblasts and myotubes, and in a limited number of cell lines; they are always coexpressed with the ubiquitous isoform containing segment X1. In some tissues (e.g. Salivary gland), isoforms containing cytoplasmic segment A and isoforms containing segment B

are detected while in others, only isoforms containing one cytoplasmic segment are found (segment A in epidermis and segment B in kidney).

関連疾患

Epidermolysis bullosa letalis, with pyloric atresia

配列類似性

Belongs to the integrin alpha chain family.

Contains 7 FG-GAP repeats.

翻訳後修飾

Isoforms containing segment A, but not segment B, are the major targets for PMA-induced phosphorylation. Phosphorylation occurs on 'Ser-1103' of isoform alpha-6X1X2A. Phosphorylation is not required for the induction of integrin alpha-6A/beta-1 high affinity but may reduce the affinity for ligand.

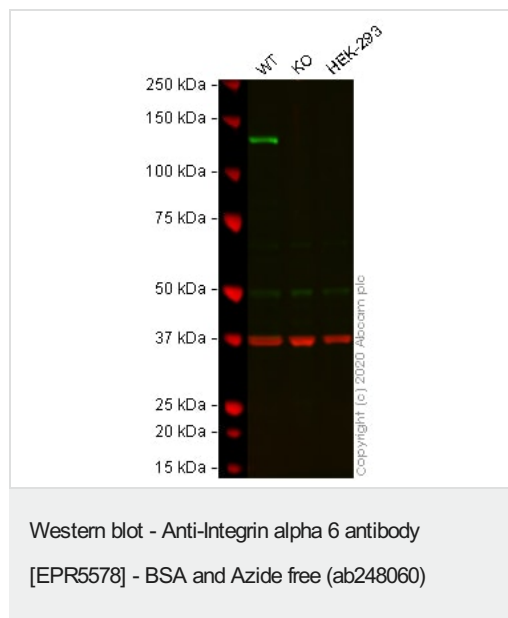
In invasive prostate cancer ITGA6 undergoes PLAU-mediated cleavage at residues Arg-634-635-Arg in a time-dependent manner enhancing cell invasion and migration in vitro.

Palmitoylation by DHHC3 enhances stability and cell surface expression.

細胞内局在

Cell membrane. Cell membrane.

画像



All lanes : Anti-Integrin alpha 6 antibody [EPR5578] ([ab124924](#)) at 1/1000 dilution

Lane 1 : Wild-type SW480 cell lysate

Lane 2 : ITGA6 knockout SW480 cell lysate

Lane 3 : HEK-293 cell lysate

Lysates/proteins at 20 µg per lane.

Performed under reducing conditions.

Predicted band size: 126 kDa

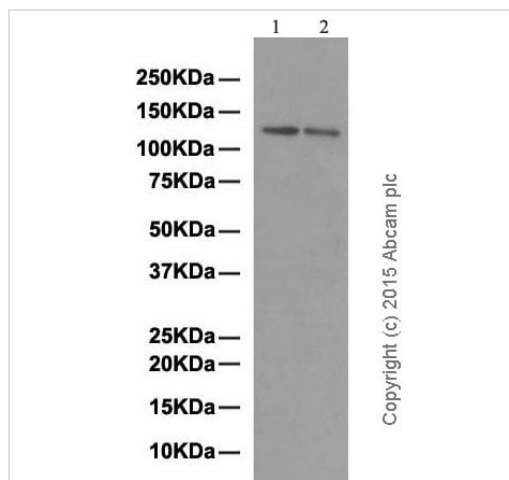
Observed band size: 130 kDa

This data was developed using the same antibody clone in a different buffer formulation ([ab124924](#)).

Lanes 1 - 3: Merged signal (red and green). Green - [ab124924](#) observed at 130 kDa. Red - loading control [ab8245](#) (Mouse anti-GAPDH antibody [6C5]) observed at 37kDa.

[ab124924](#) was shown to react with Integrin alpha 6 in wild-type SW480 cells in western blot with loss of signal observed in ITGA6 knockout sample. Wild-type and ITGA6 knockout SW480 cell lysates were subjected to SDS-PAGE. Membranes were blocked in 3% milk in TBS-T (0.1% Tween®) before incubation with [ab124924](#) and [ab8245](#) (Mouse anti-GAPDH antibody [6C5]) overnight at 4°C at a 1 in 1000 dilution and a 1 in 20000 dilution respectively. Blots

were incubated with Goat anti-Rabbit IgG H&L (IRDye® 800CW) preabsorbed ([ab216773](#)) and Goat anti-Mouse IgG H&L (IRDye® 680RD) preabsorbed ([ab216776](#)) secondary antibodies at 1 in 20000 dilution for 1 hour at room temperature before imaging.



Western blot - Anti-Integrin alpha 6 antibody [EPR5578] - BSA and Azide free ([ab248060](#))

All lanes : Anti-Integrin alpha 6 antibody [EPR5578] ([ab124924](#)) at 1/10000 dilution (purified)

Lane 1 : HT-1376 cell lysate

Lane 2 : JAR cell lysate

Lysates/proteins at 20 µg per lane.

Secondary

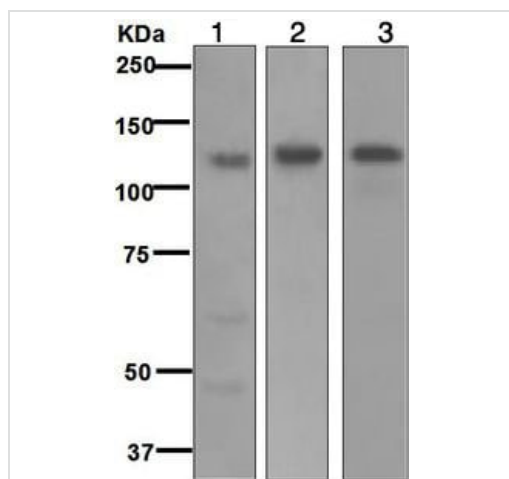
All lanes : HRP goat anti-rabbit IgG (H+L) at 1/50000 dilution

Predicted band size: 126 kDa

Observed band size: 126 kDa

This data was developed using [ab124924](#), the same antibody clone in a different buffer formulation.

Blocking and dilution buffer: 5% NFDM/TBST.



Western blot - Anti-Integrin alpha 6 antibody [EPR5578] - BSA and Azide free ([ab248060](#))

All lanes : Anti-Integrin alpha 6 antibody [EPR5578] ([ab124924](#)) at 1/1000 dilution

Lane 1 : JAR cell lysate

Lane 2 : HT1376 cell lysate

Lane 3 : Human platelet lysate

Lysates/proteins at 10 µg per lane.

Secondary

All lanes : HRP-conjugated goat anti-rabbit at 1/2000 dilution

Predicted band size: 126 kDa

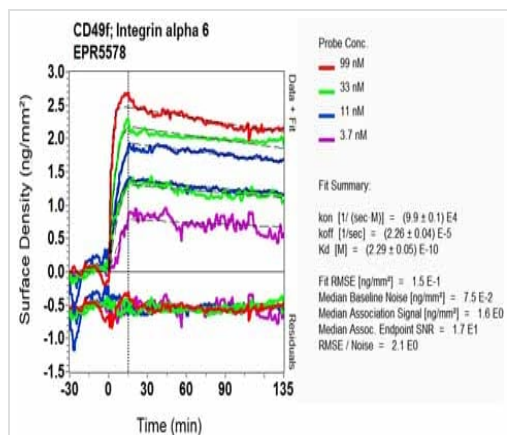
This data was developed using [ab124924](#), the same antibody clone in a different buffer formulation.

Secondary antibody - **anti-rabbit HRP (ab6721)**.

This data was developed using **ab124924**, the same antibody clone in a different buffer formulation. Equilibrium dissociation constant (K_D)

Learn more about K_D

[Click here to learn more about \$K_D\$](#)



SPR Scanning - Anti-Integrin alpha 6 antibody
[EPR5578] - BSA and Azide free (ab248060)

Why choose a recombinant antibody?



Research with confidence
Consistent and reproducible results



Long-term and scalable supply
Recombinant technology



Success from the first experiment
Confirmed specificity



Ethical standards compliant
Animal-free production

Anti-Integrin alpha 6 antibody [EPR5578] - BSA and Azide free (ab248060)

Please note: All products are "FOR RESEARCH USE ONLY. NOT FOR USE IN DIAGNOSTIC PROCEDURES"

Our Abpromise to you: Quality guaranteed and expert technical support

- Replacement or refund for products not performing as stated on the datasheet
- Valid for 12 months from date of delivery
- Response to your inquiry within 24 hours
- We provide support in Chinese, English, French, German, Japanese and Spanish
- Extensive multi-media technical resources to help you
- We investigate all quality concerns to ensure our products perform to the highest standards

If the product does not perform as described on this datasheet, we will offer a refund or replacement. For full details of the Abpromise, please visit <https://www.abcam.co.jp/abpromise> or contact our technical team.

Terms and conditions

- Guarantee only valid for products bought direct from Abcam or one of our authorized distributors