

Anti-Integrin alpha 6 antibody [EPR18124] - BSA and Azide free ab240252

KO 評価済 リコンビナント RabMAb

画像数 8

製品の概要

製品名	Anti-Integrin alpha 6 antibody [EPR18124] - BSA and Azide free
製品の詳細	Rabbit monoclonal [EPR18124] to Integrin alpha 6 - BSA and Azide free
由来種	Rabbit
アプリケーション	適用あり: WB, IHC-Fr, IHC-P
種交差性	交差種: Mouse, Rat, Human
免疫原	Synthetic peptide. This information is proprietary to Abcam and/or its suppliers.
ポジティブ・コントロール	WB: SW480 and HEK293 cell lysates. IHC-P: Rat and mouse stomach tissues; Human endometrial cancer and breast tissues. IHC-Fr: Rat and mouse stomach tissues.
特記事項	<p>ab240252 is the carrier-free version of ab181551.</p> <p>Our carrier-free antibodies are typically supplied in a PBS-only formulation, purified and free of BSA, sodium azide and glycerol. The carrier-free buffer and high concentration allow for increased conjugation efficiency.</p> <p>This conjugation-ready format is designed for use with fluorochromes, metal isotopes, oligonucleotides, and enzymes, which makes them ideal for antibody labelling, functional and cell-based assays, flow-based assays (e.g. mass cytometry) and Multiplex Imaging applications.</p> <p>Use our conjugation kits for antibody conjugates that are ready-to-use in as little as 20 minutes with <1 minute hands-on-time and 100% antibody recovery: available for fluorescent dyes, HRP, biotin and gold.</p> <p>This product is compatible with the Maxpar[®] Antibody Labeling Kit from Fluidigm, without the need for antibody preparation. Maxpar[®] is a trademark of Fluidigm Canada Inc.</p> <p>This product is a recombinant monoclonal antibody, which offers several advantages including:</p> <ul style="list-style-type: none">- High batch-to-batch consistency and reproducibility- Improved sensitivity and specificity- Long-term security of supply- Animal-free production <p>For more information see here.</p> <p>Our RabMAb[®] technology is a patented hybridoma-based technology for making rabbit monoclonal antibodies. For details on our patents, please refer to RabMAb[®] patents.</p>

製品の特性

製品の状態	Liquid
保存方法	Shipped at 4°C. Store at +4°C. Do Not Freeze.
バッファー	pH: 7.2 Constituent: PBS
キャリア・フリー	はい
精製度	Protein A purified
ポリ/モノ	モノクローナル
クローン名	EPR18124
アイソタイプ	IgG

アプリケーション

The Abpromise guarantee Abpromise保証は、次のテスト済みアプリケーションにおけるab240252の使用に適用されず
アプリケーションノートには、推奨の開始希釈率がありますが、適切な希釈率につきましてはご検討ください。

アプリケーション	Abreviews	特記事項
WB		Use at an assay dependent concentration. Detects a band of approximately 127 kDa (predicted molecular weight: 127 kDa).
IHC-Fr		1/100.
IHC-P		Use at an assay dependent concentration. Perform heat mediated antigen retrieval with Tris/EDTA buffer pH 9.0 before commencing with IHC staining protocol.

ターゲット情報

機能	Integrin alpha-6/beta-1 is a receptor for laminin on platelets. Integrin alpha-6/beta-4 is a receptor for laminin in epithelial cells and it plays a critical structural role in the hemidesmosome (By similarity). ITGA6:ITGB4 binds to NRG1 (via EGF domain) and this binding is essential for NRG1-ERBB signaling (PubMed:20682778). ITGA6:ITGB4 binds to IGF1 and this binding is essential for IGF1 signaling (PubMed:22351760).
組織特異性	Integrin alpha-6/beta-4 is predominantly expressed by epithelia. Isoforms containing segment X1 are ubiquitously expressed. Isoforms containing segment X1X2 are expressed in heart, kidney, placenta, colon, duodenum, myoblasts and myotubes, and in a limited number of cell lines; they are always coexpressed with the ubiquitous isoform containing segment X1. In some tissues (e.g. Salivary gland), isoforms containing cytoplasmic segment A and isoforms containing segment B are detected while in others, only isoforms containing one cytoplasmic segment are found (segment A in epidermis and segment B in kidney).
関連疾患	Epidermolysis bullosa letalis, with pyloric atresia
配列類似性	Belongs to the integrin alpha chain family. Contains 7 FG-GAP repeats.

翻訳後修飾

Isoforms containing segment A, but not segment B, are the major targets for PMA-induced phosphorylation. Phosphorylation occurs on 'Ser-1103' of isoform alpha-6X1X2A. Phosphorylation is not required for the induction of integrin alpha-6A/beta-1 high affinity but may reduce the affinity for ligand.

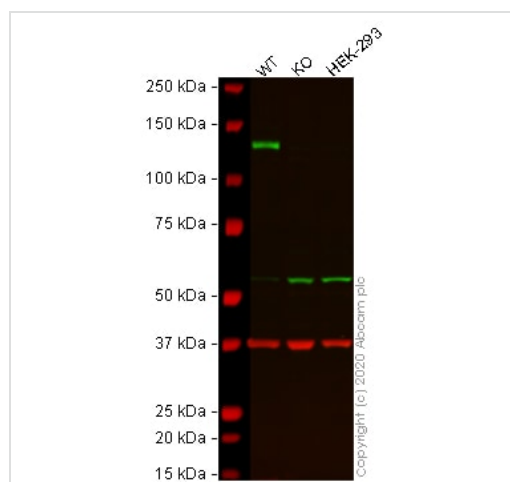
In invasive prostate cancer ITGA6 undergoes PLAU-mediated cleavage at residues Arg-634-635-Arg in a time-dependent manner enhancing cell invasion and migration in vitro.

Palmitoylation by DHHC3 enhances stability and cell surface expression.

細胞内局在

Cell membrane. Cell membrane.

画像



Western blot - Anti-Integrin alpha 6 antibody [EPR18124] - BSA and Azide free (ab240252)

All lanes : Anti-Integrin alpha 6 antibody [EPR18124] ([ab181551](#)) at 1/2000 dilution

Lane 1 : Wild-type SW480 cell lysate

Lane 2 : ITGA6 knockout SW480 cell lysate

Lane 3 : HEK-293 cell lysate

Lysates/proteins at 20 µg per lane.

Performed under reducing conditions.

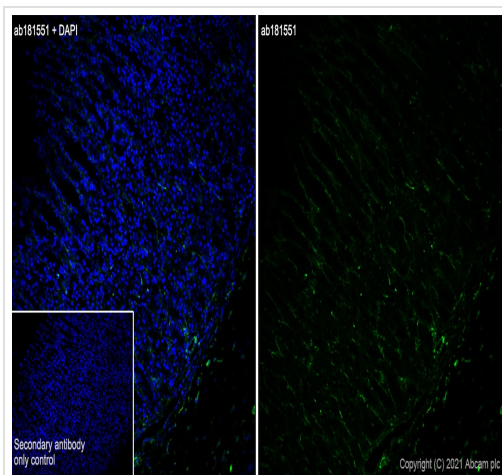
Predicted band size: 127 kDa

Observed band size: 130 kDa

This data was developed using the same antibody clone in a different buffer formulation ([ab181551](#)).

Lanes 1 - 3: Merged signal (red and green). Green - [ab181551](#) observed at 130 kDa. Red - loading control [ab8245](#) (Mouse anti-GAPDH antibody [6C5]) observed at 37kDa.

[ab181551](#) was shown to react with Integrin alpha 6 in wild-type SW480 cells in western blot with loss of signal observed in ITGA6 knockout sample. Wild-type and ITGA6 knockout SW480 cell lysates were subjected to SDS-PAGE. Membranes were blocked in 3% milk in TBS-T (0.1% Tween®) before incubation with [ab181551](#) and [ab8245](#) (Mouse anti-GAPDH antibody [6C5]) overnight at 4°C at a 1 in 2000 dilution and a 1 in 20000 dilution respectively. Blots were incubated with Goat anti-Rabbit IgG H&L (IRDye® 800CW) preabsorbed ([ab216773](#)) and Goat anti-Mouse IgG H&L (IRDye® 680RD) preabsorbed ([ab216776](#)) secondary antibodies at 1 in 20000 dilution for 1 hour at room temperature before imaging.

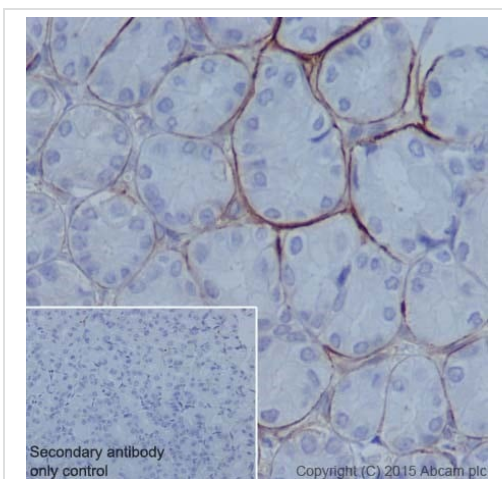


Immunohistochemistry (Frozen sections) - Anti-Integrin alpha 6 antibody [EPR18124] - BSA and Azide free (ab240252)

This data was developed using the same antibody clone in a different buffer formulation - **ab181551**.

Immunohistochemistry (Frozen sections) analysis of rat stomach tissue (4% PFA, 0.2% Triton x-100) labelling Integrin alpha 6 with ab240252 at 1/100 dilution. **ab150077** Goat Anti-Rabbit IgG H&L (Alexa Fluor® 488) was used as the secondary antibody at 1/1000 dilution. Negative control using PBS instead of primary antibody (left). Counterstained with DAPI.

Positive staining was seen on rat stomach.



Immunohistochemistry (Formalin/PFA-fixed paraffin-embedded sections) - Anti-Integrin alpha 6 antibody [EPR18124] - BSA and Azide free (ab240252)

Immunohistochemical analysis of paraffin-embedded Mouse stomach tissue labeling Integrin alpha 6 with **ab181551** at 1/500 followed by Goat Anti-Rabbit IgG (HRP) at 1/500.

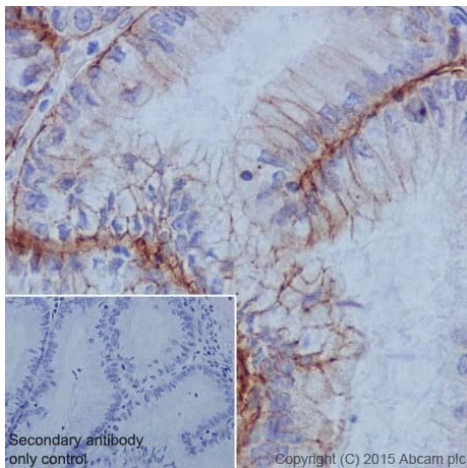
Basement membrane staining on tumor cells of Mouse stomach tissue is observed.

Counter stained with Hematoxylin.

Negative control: Used PBS instead of primary antibody followed by Goat Anti-Rabbit IgG (HRP) at 1/500.

This data was developed using the same antibody clone in a different buffer formulation containing PBS, BSA, glycerol, and sodium azide (**ab181551**).

Perform heat mediated antigen retrieval with Tris/EDTA buffer pH 9.0 before commencing with IHC staining protocol.



Immunohistochemistry (Formalin/PFA-fixed paraffin-embedded sections) - Anti-Integrin alpha 6 antibody [EPR18124] - BSA and Azide free (ab240252)

Immunohistochemical analysis of paraffin-embedded Human endometrial cancer tissue labeling Integrin alpha 6 with **ab181551** at 1/500 followed by Goat Anti-Rabbit IgG (HRP) at 1/500.

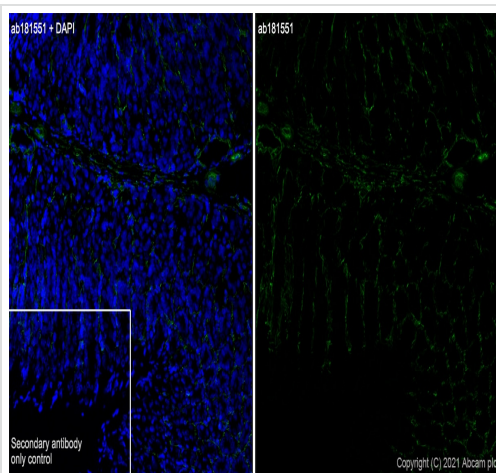
Membrane and cytoplasm staining on tumor cells of Human endometrial cancer tissue is observed.

Counter stained with Hematoxylin.

Negative control: Used PBS instead of primary antibody followed by Goat Anti-Rabbit IgG (HRP) at 1/500.

This data was developed using the same antibody clone in a different buffer formulation containing PBS, BSA, glycerol, and sodium azide (**ab181551**).

Perform heat mediated antigen retrieval with Tris/EDTA buffer pH 9.0 before commencing with IHC staining protocol.

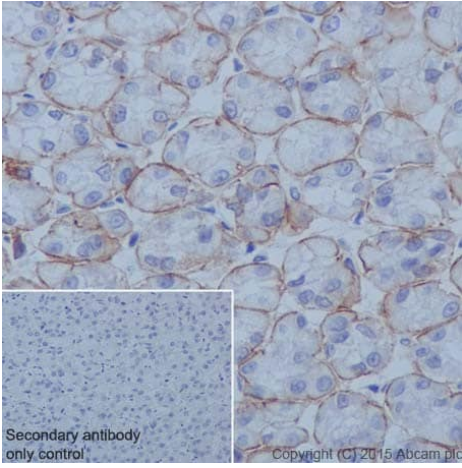


Immunohistochemistry (Frozen sections) - Anti-Integrin alpha 6 antibody [EPR18124] - BSA and Azide free (ab240252)

This data was developed using the same antibody clone in a different buffer formulation - **ab181551**.

Immunohistochemistry (Frozen sections) analysis of mouse stomach tissue (4% PFA, 0.2% Triton x-100) labelling Integrin alpha 6 with ab240252 at 1/100 dilution. **ab150077** Goat Anti-Rabbit IgG H&L (Alexa Fluor® 488) was used as the secondary antibody at 1/1000 dilution. Negative control using PBS instead of primary antibody (left). Counterstained with DAPI.

Positive staining was seen on mouse stomach.



Immunohistochemistry (Formalin/PFA-fixed paraffin-embedded sections) - Anti-Integrin alpha 6 antibody [EPR18124] - BSA and Azide free (ab240252)

Immunohistochemical analysis of paraffin-embedded Rat stomach tissue labeling Integrin alpha 6 with **ab181551** at 1/500 followed by Goat Anti-Rabbit IgG (HRP) at 1/500.

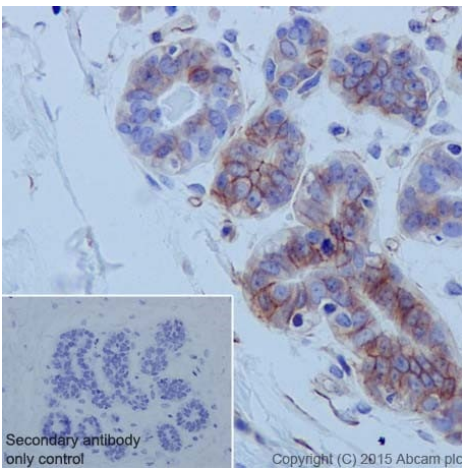
Basement membrane staining on tumor cells of Rat stomach tissue is observed.

Counter stained with Hematoxylin.

Negative control: Used PBS instead of primary antibody followed by Goat Anti-Rabbit IgG (HRP) at 1/500.

This data was developed using the same antibody clone in a different buffer formulation containing PBS, BSA, glycerol, and sodium azide (**ab181551**).

Perform heat mediated antigen retrieval with Tris/EDTA buffer pH 9.0 before commencing with IHC staining protocol.



Immunohistochemistry (Formalin/PFA-fixed paraffin-embedded sections) - Anti-Integrin alpha 6 antibody [EPR18124] - BSA and Azide free (ab240252)

Immunohistochemical analysis of paraffin-embedded Human breast tissue labeling Integrin alpha 6 with **ab181551** at 1/500 followed by Goat Anti-Rabbit IgG (HRP) at 1/500.

Membrane and cytoplasm staining on epithelial cells of Human breast tissue is observed.

Counter stained with Hematoxylin.

Negative control: Used PBS instead of primary antibody followed by Goat Anti-Rabbit IgG (HRP) at 1/500.

This data was developed using the same antibody clone in a different buffer formulation containing PBS, BSA, glycerol, and sodium azide (**ab181551**).

Perform heat mediated antigen retrieval with Tris/EDTA buffer pH 9.0 before commencing with IHC staining protocol.

Why choose a recombinant antibody?



Research with confidence
Consistent and reproducible results



Long-term and scalable supply
Recombinant technology



Success from the first experiment
Confirmed specificity



Ethical standards compliant
Animal-free production

Anti-Integrin alpha 6 antibody [EPR18124] - BSA
and Azide free (ab240252)

Please note: All products are "FOR RESEARCH USE ONLY. NOT FOR USE IN DIAGNOSTIC PROCEDURES"

Our Abpromise to you: Quality guaranteed and expert technical support

- Replacement or refund for products not performing as stated on the datasheet
- Valid for 12 months from date of delivery
- Response to your inquiry within 24 hours
- We provide support in Chinese, English, French, German, Japanese and Spanish
- Extensive multi-media technical resources to help you
- We investigate all quality concerns to ensure our products perform to the highest standards

If the product does not perform as described on this datasheet, we will offer a refund or replacement. For full details of the Abpromise, please visit <https://www.abcam.co.jp/abpromise> or contact our technical team.

Terms and conditions

- Guarantee only valid for products bought direct from Abcam or one of our authorized distributors