

### Anti-Insulin Receptor beta antibody [18-44] ab983

★★★★★ [2 Abreviews](#) [8 References](#) [画像数 1](#)

#### 製品の概要

製品名	Anti-Insulin Receptor beta antibody [18-44]
製品の詳細	Mouse monoclonal [18-44] to Insulin Receptor beta
由来種	Mouse
特異性	This antibody reacts specifically with the beta subunit of the insulin receptor.
アプリケーション	<b>適用あり:</b> Flow Cyt
種交差性	<b>交差種:</b> Human
免疫原	Full length protein corresponding to Human Insulin Receptor beta. Human placental insulin receptor.
特記事項	<p>This product was changed from ascites to tissue culture supernatant on 19/12/2018. Please note that the dilutions may need to be adjusted accordingly. If you have any questions please do not hesitate to contact our scientific support team.</p> <p>The Life Science industry has been in the grips of a reproducibility crisis for a number of years. Abcam is leading the way in addressing this with our range of recombinant monoclonal antibodies and knockout edited cell lines for gold-standard validation. Please check that this product meets your needs before purchasing.</p> <p>If you have any questions, special requirements or concerns, please send us an inquiry and/or contact our Support team ahead of purchase. Recommended alternatives for this product can be found below, along with publications, customer reviews and Q&amp;As</p>

#### 製品の特性

製品の状態	Liquid
保存方法	Shipped at 4°C. Upon delivery aliquot and store at -20°C or -80°C. Avoid repeated freeze / thaw cycles.
バッファー	pH: 7.4
精製度	Protein G purified
特記事項(精製)	Purified from TCS
ポリ/モノ	モノクローナル
クローン名	18-44
アイソタイプ	IgG2b

## アプリケーション

**The Abpromise guarantee** Abpromise保証は、次のテスト済みアプリケーションにおけるab983の使用に適用されます  
アプリケーションノートには、推奨の開始希釈率がありますが、適切な希釈率につきましてはご確認ください。

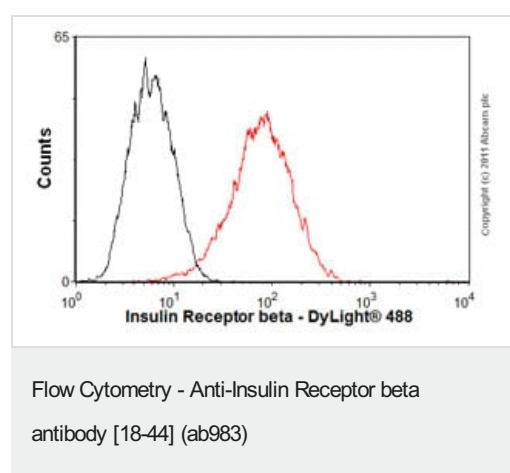
アプリケーション	Abreviews	特記事項
Flow Cyt		Use 1µg for 10 <sup>6</sup> cells. <b>ab170192</b> - Mouse monoclonal IgG2b, is suitable for use as an isotype control with this antibody.

## ターゲット情報

**関連性** Insulin receptor mediates the biological activities of insulin by regulating multiple signaling pathways through activation of a series of phosphorylation cascades. The human insulin receptor is a heterotetrameric membrane glycoprotein consisting of disulfide-linked subunits in a β-a-a-β configuration. The β-subunit (95kDa) possesses a single transmembrane domain with tyrosine kinase activity, whereas the α-subunit (135kDa) is completely extracellular. The alpha subunits each contain insulin binding sites and are entirely extracellular in localization. The beta subunits each possess an extracellular domain, a single transmembrane domain, and a cytoplasmic tyrosine kinase domain. Binding of insulin to the alpha subunits induces a conformation change in the receptor which activates the kinase domain, stimulating tyrosine autophosphorylation of the receptor and tyrosine phosphorylation of at least five different insulin receptor substrates designated IRS-1-4, and Shc.

**細胞内局在** Membrane; Single pass type I membrane protein.

## 画像



Overlay histogram showing HepG2 cells stained with ab983 (red line). The cells were fixed with 4% paraformaldehyde (10 min) and then permeabilized with 0.1% PBS-Tween for 20 min. The cells were then incubated in 1x PBS / 10% normal goat serum / 0.3M glycine to block non-specific protein-protein interactions followed by the antibody (ab983, 1µg/1x10<sup>6</sup> cells) for 30 min at 22°C. The secondary antibody used was DyLight® 488 goat anti-mouse IgG (H+L) (**ab96879**) at 1/500 dilution for 30 min at 22°C. Isotype control antibody (black line) was mouse IgG2b [PLPV219] (**ab91366**, 2µg/1x10<sup>6</sup> cells) used under the same conditions. Acquisition of >5,000 events was performed. This antibody gave a positive signal in HepG2 cells fixed with 80% methanol (5 min)/permeabilized with 0.1% PBS-Tween for 20 min used under the same conditions.

This image was generated using the ascites version of the product.

**Please note:** All products are "FOR RESEARCH USE ONLY. NOT FOR USE IN DIAGNOSTIC PROCEDURES"

### **Our Abpromise to you: Quality guaranteed and expert technical support**

---

- Replacement or refund for products not performing as stated on the datasheet
- Valid for 12 months from date of delivery
- Response to your inquiry within 24 hours
- We provide support in Chinese, English, French, German, Japanese and Spanish
- Extensive multi-media technical resources to help you
- We investigate all quality concerns to ensure our products perform to the highest standards

If the product does not perform as described on this datasheet, we will offer a refund or replacement. For full details of the Abpromise, please visit <https://www.abcam.co.jp/abpromise> or contact our technical team.

### **Terms and conditions**

---

- Guarantee only valid for products bought direct from Abcam or one of our authorized distributors