

# Anti-IMPG2 antibody ab272558

画像数 4

### 製品の概要

---

製品名	Anti-IMPG2 antibody
製品の詳細	Rabbit polyclonal to IMPG2
由来種	Rabbit
アプリケーション	<b>適用あり:</b> IHC-P
種交差性	<b>交差種:</b> Human
免疫原	Recombinant fragment corresponding to Human IMPG2 aa 1100-1250. Database link: <a href="#">Q9BZV3</a> <a href="#">Run BLAST with</a> <a href="#">Run BLAST with</a>
ポジティブ・コントロール	IHC-P: Human retina tissue.
特記事項	<p>The Life Science industry has been in the grips of a reproducibility crisis for a number of years. Abcam is leading the way in addressing this with our range of recombinant monoclonal antibodies and knockout edited cell lines for gold-standard validation. Please check that this product meets your needs before purchasing.</p> <p>If you have any questions, special requirements or concerns, please send us an inquiry and/or contact our Support team ahead of purchase. Recommended alternatives for this product can be found below, along with publications, customer reviews and Q&amp;As</p>

### 製品の特性

---

製品の状態	Liquid
保存方法	Shipped at 4°C. Store at +4°C short term (1-2 weeks). Upon delivery aliquot. Store at -20°C long term. Avoid freeze / thaw cycle.
バッファー	pH: 7.20 Preservative: 0.02% Sodium azide Constituents: 40% Glycerol (glycerin, glycerine), PBS
精製度	Immunogen affinity purified
ポリ/モノ	ポリクローナル
アイソタイプ	IgG

### アプリケーション

---

## The Abpromise guarantee

**Abpromise保証は、次のテスト済みアプリケーションにおけるab272558の使用に適用されます**

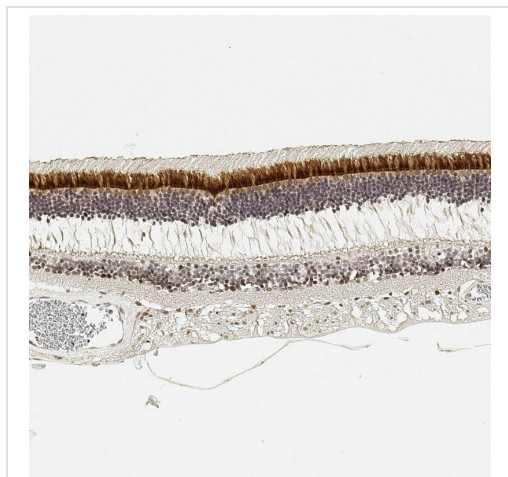
アプリケーションノートには、推奨の開始希釈率がありますが、適切な希釈率につきましてはご検討ください。

アプリケーション	Abreviews	特記事項
IHC-P		1/200 - 1/500. Perform heat mediated antigen retrieval with citrate buffer pH 6 before commencing with IHC staining protocol.

## ターゲット情報

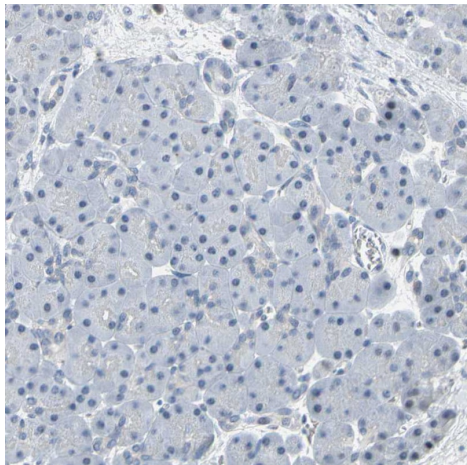
<b>関連性</b>	IMPG2 (Interphotoreceptor matrix proteoglycan 2) is part of an extracellular complex occupying the interface between photoreceptors and the retinal pigment epithelium in the fundus of the eye. IMPG2 is part of an extracellular complex occupying the interface between photoreceptors and the retinal pigment epithelium in the fundus of the eye.
<b>細胞内局在</b>	Membrane; Single pass type I membrane protein

## 画像



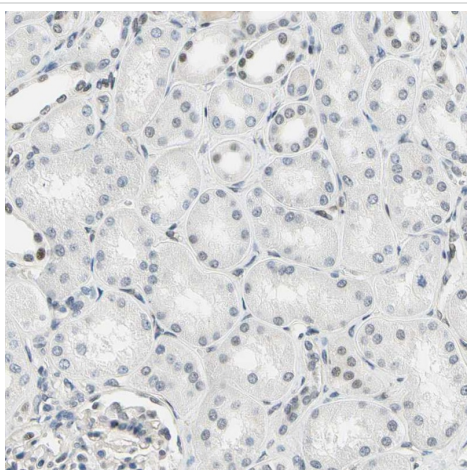
Paraffin-embedded formalin-fixed human retina tissue stained for IMPG2 using ab272558 at 1/500 dilution in immunohistochemical analysis.

Immunohistochemistry (Formalin/PFA-fixed paraffin-embedded sections) - Anti-IMPG2 antibody (ab272558)



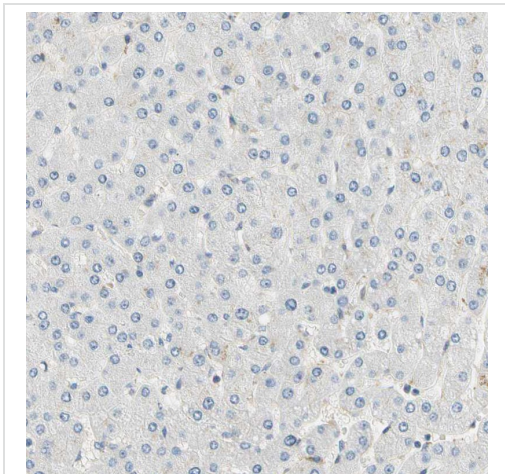
Paraffin-embedded formalin-fixed human pancreas tissue stained for IMPG2 using ab272558 at 1/500 dilution in immunohistochemical analysis. No positive staining observed.

Immunohistochemistry (Formalin/PFA-fixed paraffin-embedded sections) - Anti-IMPG2 antibody (ab272558)



Paraffin-embedded formalin-fixed human kidney tissue stained for IMPG2 using ab272558 at 1/500 dilution in immunohistochemical analysis. No positive staining observed.

Immunohistochemistry (Formalin/PFA-fixed paraffin-embedded sections) - Anti-IMPG2 antibody (ab272558)



Paraffin-embedded formalin-fixed human liver tissue stained for IMPG2 using ab272558 at 1/500 dilution in immunohistochemical analysis. No positive staining observed.

Immunohistochemistry (Formalin/PFA-fixed paraffin-embedded sections) - Anti-IMPG2 antibody (ab272558)

**Please note:** All products are "FOR RESEARCH USE ONLY. NOT FOR USE IN DIAGNOSTIC PROCEDURES"

### Our Abpromise to you: Quality guaranteed and expert technical support

---

- Replacement or refund for products not performing as stated on the datasheet
- Valid for 12 months from date of delivery
- Response to your inquiry within 24 hours
- We provide support in Chinese, English, French, German, Japanese and Spanish
- Extensive multi-media technical resources to help you
- We investigate all quality concerns to ensure our products perform to the highest standards

If the product does not perform as described on this datasheet, we will offer a refund or replacement. For full details of the Abpromise, please visit <https://www.abcam.co.jp/abpromise> or contact our technical team.

### Terms and conditions

---

- Guarantee only valid for products bought direct from Abcam or one of our authorized distributors