

Anti-IMPDH2 antibody [EPR8365(B)] - BSA and Azide free ab248323

リコンビナント **RabMAb**

画像数 7

製品の概要

製品名	Anti-IMPDH2 antibody [EPR8365(B)] - BSA and Azide free
製品の詳細	Rabbit monoclonal [EPR8365(B)] to IMPDH2 - BSA and Azide free
由来種	Rabbit
特異性	The immunogen used to raise this antibody shares 86% homology with Human IMPDH1. Cross-reactivity with this protein has not been confirmed experimentally.
アプリケーション	適用あり: IHC-P, ICC/IF, WB, Flow Cyt (Intra) 適用なし: IP
種交差性	交差種: Mouse, Rat, Human
免疫原	Synthetic peptide. This information is proprietary to Abcam and/or its suppliers.
ポジティブ・コントロール	WB: HeLa, K-562, MCF7 whole cell lysate, Rat and Mouse spleen lysate, DDDK tagged human full length IMPDH2 recombinant protein; IHC-P: Human colon and ovarian cancer tissue; ICC/IF: HeLa cells; Flow Cyt (Intra): K-562 cells.
特記事項	<p>ab248323 is the carrier-free version of ab129165.</p> <p>Our carrier-free antibodies are typically supplied in a PBS-only formulation, purified and free of BSA, sodium azide and glycerol. The carrier-free buffer and high concentration allow for increased conjugation efficiency.</p> <p>This conjugation-ready format is designed for use with fluorochromes, metal isotopes, oligonucleotides, and enzymes, which makes them ideal for antibody labelling, functional and cell-based assays, flow-based assays (e.g. mass cytometry) and Multiplex Imaging applications.</p> <p>Use our conjugation kits for antibody conjugates that are ready-to-use in as little as 20 minutes with <1 minute hands-on-time and 100% antibody recovery: available for fluorescent dyes, HRP, biotin and gold.</p> <p>This product is compatible with the Maxpar[®] Antibody Labeling Kit from Fluidigm, without the need for antibody preparation. Maxpar[®] is a trademark of Fluidigm Canada Inc.</p> <p>This product is a recombinant monoclonal antibody, which offers several advantages including:</p> <ul style="list-style-type: none"> - High batch-to-batch consistency and reproducibility - Improved sensitivity and specificity - Long-term security of supply

- Animal-free production

For more information [see here](#).

Our RabMAb[®] technology is a patented hybridoma-based technology for making rabbit monoclonal antibodies. For details on our patents, please refer to [RabMAb[®] patents](#).

製品の特性

製品の状態

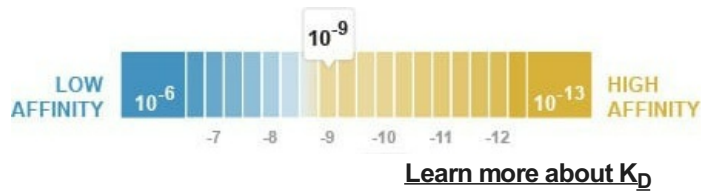
Liquid

保存方法

Shipped at 4°C. Store at +4°C. Do Not Freeze.

解離定数 (K_D 値)

K_D = 2.24 x 10⁻⁹ M



バッファー

pH: 7.2

Constituent: PBS

キャリア・フリー

はい

精製度

Protein A purified

ポリ/モノ

モノクローナル

クローン名

EPR8365(B)

アイソタイプ

IgG

アプリケーション

The Abpromise guarantee

Abpromise保証は、次のテスト済みアプリケーションにおけるab248323の使用に適用されます

アプリケーションノートには、推奨の開始希釈率がありますが、適切な希釈率につきましてはご確認ください。

アプリケーション	Abreviews	特記事項
IHC-P		Use at an assay dependent concentration. Perform heat mediated antigen retrieval with citrate buffer pH 6 before commencing with IHC staining protocol.
ICC/IF		Use at an assay dependent concentration.
WB		Use at an assay dependent concentration. Detects a band of approximately 56 kDa (predicted molecular weight: 56 kDa).
Flow Cyt (Intra)		Use at an assay dependent concentration.

追加情報

Is unsuitable for IP.

ターゲット情報

機能

Rate limiting enzyme in the de novo synthesis of guanine nucleotides and therefore is involved in

the regulation of cell growth. It may also have a role in the development of malignancy and the growth progression of some tumors.

組織特異性

IMP type I is the main species in normal leukocytes and type II predominates over type I in the tumor.

パスウェイ

Purine metabolism; XMP biosynthesis via de novo pathway; XMP from IMP: step 1/1.

配列類似性

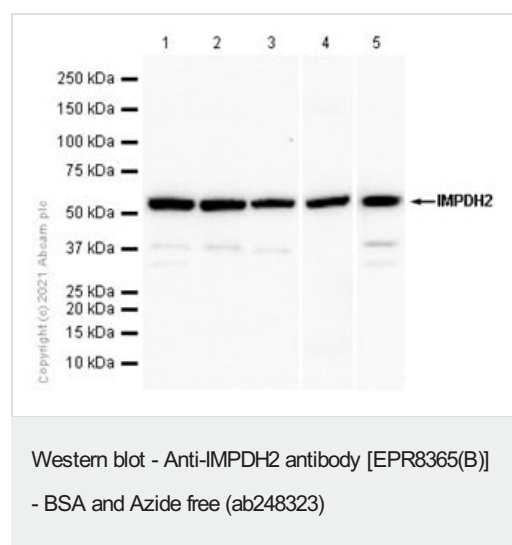
Belongs to the IMPDH/GMPR family.

Contains 2 CBS domains.

翻訳後修飾

The N-terminus is blocked.

画像



All lanes : Anti-IMPDH2 antibody [EPR8365(B)] ([ab129165](#)) at 1/10000 dilution

Lane 1 : HeLa (Human cervix adenocarcinoma epithelial cell) whole cell lysate

Lane 2 : K-562 (Human chronic myelogenous leukemia lymphoblast) whole cell lysate

Lane 3 : MCF7 (Human breast adenocarcinoma epithelial cell) whole cell lysate

Lane 4 : Rat spleen lysate

Lane 5 : Mouse spleen lysate

Lysates/proteins at 20 µg per lane.

Secondary

All lanes : Goat Anti-Rabbit IgG H&L (HRP) ([ab97051](#)) at 1/20000 dilution

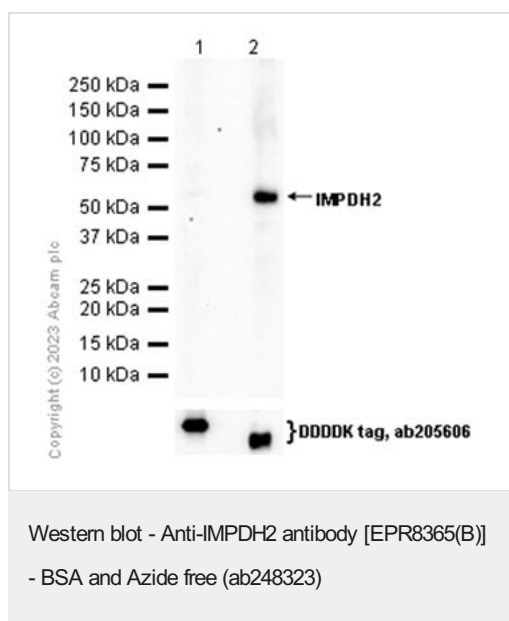
Predicted band size: 56 kDa

Observed band size: 56 kDa

Exposure time: 60 seconds

This data was developed using [ab129165](#), the same antibody clone in a different buffer formulation.

Blocking and diluting buffer and concentration: 5% NFDM/TBST



All lanes : Anti-IMPDH2 antibody [EPR8365(B)] ([ab129165](#)) at 1/1000 dilution

Lane 1 : DDDK tagged human full length IMPDH1 recombinant protein

Lane 2 : DDDK tagged human full length IMPDH2 recombinant protein

Lysates/proteins at 10 µg per lane.

Secondary

All lanes : Goat Anti-Rabbit IgG H&L (HRP) ([ab97051](#)) at 1/20000 dilution

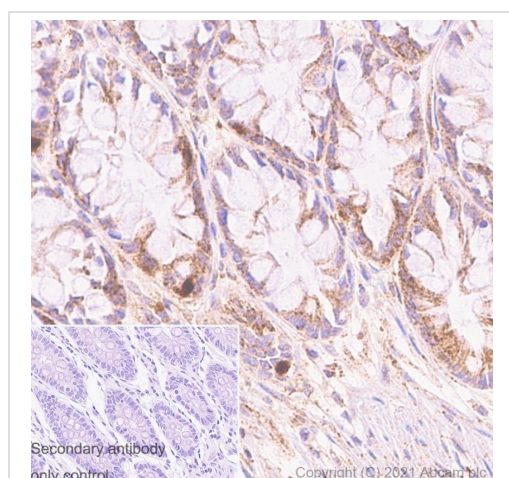
Predicted band size: 56 kDa

Observed band size: 56 kDa

Exposure time: 140 seconds

This data was developed using [ab129165](#), the same antibody clone in a different buffer formulation.

Blocking and diluting buffer and concentration: 5% NFDM/TBST

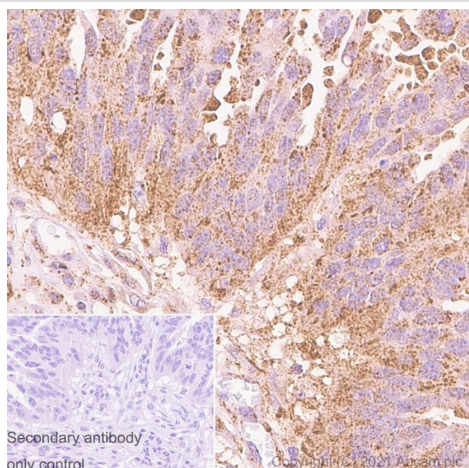


This data was developed using [ab129165](#), the same antibody clone in a different buffer formulation.

Immunohistochemistry (Formalin/PFA-fixed paraffin-embedded sections) analysis of human colon tissue labelling IMPDH2 with [ab129165](#) at 1/4000 for 30 mins at room temperature. A Rabbit specific IHC polymer detection kit HRP/DAB ([ab209101](#)) was used as the secondary antibody.

Heat mediated antigen retrieval using Bond™ Epitope Retrieval Solution 2 (pH 9.0) for 20 minutes. Negative control using only secondary antibody. Counterstained with hematoxylin.

The immunostaining was performed on a Leica Biosystems BOND® RX instrument.



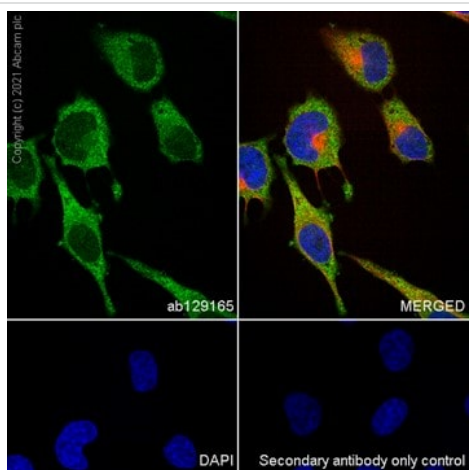
Immunohistochemistry (Formalin/PFA-fixed paraffin-embedded sections) - Anti-IMPDH2 antibody [EPR8365(B)] - BSA and Azide free (ab248323)

This data was developed using [ab129165](#), the same antibody clone in a different buffer formulation.

Immunohistochemistry (Formalin/PFA-fixed paraffin-embedded sections) analysis of human ovarian cancer tissue labelling IMPDH2 with [ab129165](#) at 1/4000 for 30 mins at room temperature. A Rabbit specific IHC polymer detection kit HRP/DAB ([ab209101](#)) was used as the secondary antibody.

Heat mediated antigen retrieval using Bond™ Epitope Retrieval Solution 2 (pH 9.0) for 20 minutes. Negative control using only secondary antibody. Counterstained with hematoxylin.

The immunostaining was performed on a Leica Biosystems BOND® RX instrument.



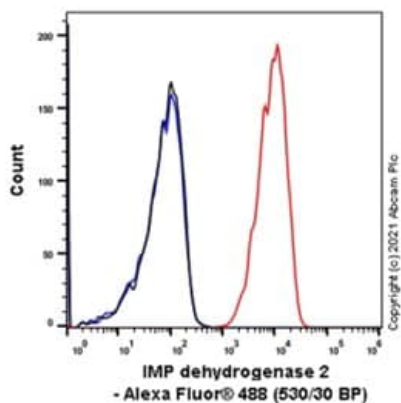
Immunocytochemistry/ Immunofluorescence - Anti-IMPDH2 antibody [EPR8365(B)] - BSA and Azide free (ab248323)

This data was developed using [ab129165](#), the same antibody clone in a different buffer formulation.

Immunocytochemistry/Immunofluorescence analysis of HeLa (human cervix adenocarcinoma epithelial cell) cells labelling IMPDH2 (Green) with [ab129165](#) at 1/1000 dilution. Cells were fixed with 4% paraformaldehyde and permeabilized with 0.1% Triton X-100. [ab150081](#), an Alexa Fluor® 488-conjugated goat anti-rabbit IgG H&L, was used as the secondary antibody at a 1/1000. Tubulin (Red) was stained with [ab195889](#), an Alexa Fluor® 594-conjugated anti-alpha tubulin antibody, at a 1/200 dilution. DAPI (Blue) was used as the nuclear counterstain. Negative control using only secondary antibody.

Confocal image showing cytoplasmic and weak nuclear staining in HeLa cells.

Image was taken with a confocal microscope (Leica-Microsystems, TCS SP8).



Flow Cytometry (Intracellular) - Anti-IMPDH2 antibody [EPR8365(B)] - BSA and Azide free (ab248323)

This data was developed using **ab129165**, the same antibody clone in a different buffer formulation.

Intracellular Flow Cytometry analysis of K-562 (human chronic myelogenous leukemia lymphoblast) cells labeling IMPDH2 with **ab129165** at 1/20 dilution (Red). Cells were fixed with 4% paraformaldehyde and permeabilised with 90% Methanol. Rabbit monoclonal - Alexa Fluor® 488 (Black) was used as the isotype control, cells without incubation with primary antibody and secondary antibody (Blue) were used as the unlabeled control.

Why choose a recombinant antibody?



Research with confidence
Consistent and reproducible results



Long-term and scalable supply
Recombinant technology



Success from the first experiment
Confirmed specificity



Ethical standards compliant
Animal-free production

Anti-IMPDH2 antibody [EPR8365(B)] - BSA and Azide free (ab248323)

Please note: All products are "FOR RESEARCH USE ONLY. NOT FOR USE IN DIAGNOSTIC PROCEDURES"

Our Abpromise to you: Quality guaranteed and expert technical support

- Replacement or refund for products not performing as stated on the datasheet
- Valid for 12 months from date of delivery
- Response to your inquiry within 24 hours
- We provide support in Chinese, English, French, German, Japanese and Spanish
- Extensive multi-media technical resources to help you
- We investigate all quality concerns to ensure our products perform to the highest standards

If the product does not perform as described on this datasheet, we will offer a refund or replacement. For full details of the Abpromise, please visit <https://www.abcam.co.jp/abpromise> or contact our technical team.

Terms and conditions

- Guarantee only valid for products bought direct from Abcam or one of our authorized distributors