


Anti-IMPA1 antibody [EPR15404(B)] ab184165

リコンビナント **RabMAb**

★★★★★ **2 Abreviews** **4 References** 画像数 5

製品の概要

| | |
|--------------|---|
| 製品名 | Anti-IMPA1 antibody [EPR15404(B)] |
| 製品の詳細 | Rabbit monoclonal [EPR15404(B)] to IMPA1 |
| 由来種 | Rabbit |
| アプリケーション | 適用あり: Flow Cyt (Intra), WB, IP, ICC/IF |
| 種交差性 | 交差種: Human 交差が予測される動物種: Mouse, Rat  |
| 免疫原 | Synthetic peptide. This information is proprietary to Abcam and/or its suppliers. |
| ポジティブ・コントロール | HCT116 and PC3 cells; Jurkat, PC3, HCT116 and Human testis lysates. |
| 特記事項 | <p>This product is a recombinant monoclonal antibody, which offers several advantages including:</p> <ul style="list-style-type: none"> - High batch-to-batch consistency and reproducibility - Improved sensitivity and specificity - Long-term security of supply - Animal-free production <p>For more information see here.</p> <p>Our RabMAb[®] technology is a patented hybridoma-based technology for making rabbit monoclonal antibodies. For details on our patents, please refer to RabMAb[®] patents.</p> |

製品の特性

| | |
|--------|--|
| 製品の状態 | Liquid |
| 保存方法 | Shipped at 4°C. Store at +4°C short term (1-2 weeks). Upon delivery aliquot. Store at -20°C long term. Avoid freeze / thaw cycle. |
| バッファー | <p>pH: 7.2</p> <p>Preservative: 0.01% Sodium azide</p> <p>Constituents: 59% PBS, 40% Glycerol (glycerin, glycerine), 0.05% BSA</p> |
| 精製度 | Protein A purified |
| ポリ/モノ | モノクローナル |
| クローン名 | EPR15404(B) |
| アイソタイプ | IgG |

アプリケーション

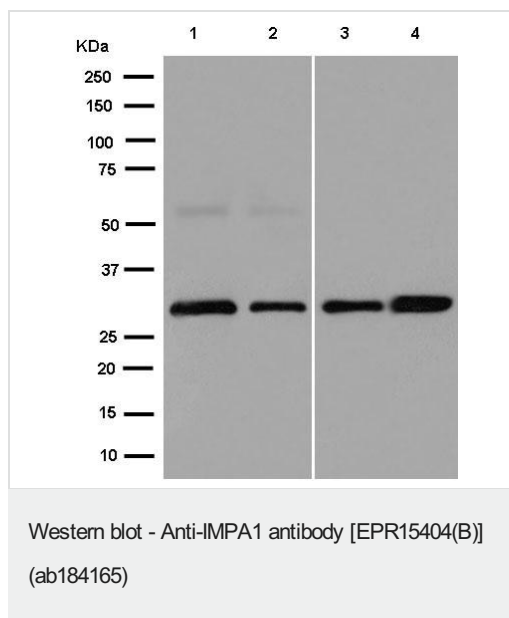
The Abpromise guarantee **Abpromise保証は、次のテスト済みアプリケーションにおけるab184165の使用に適用されます**
アプリケーションノートには、推奨の開始希釈率がありますが、適切な希釈率につきましてはご検討ください。

| アプリケーション | Abreviews | 特記事項 |
|------------------|-----------|---|
| Flow Cyt (Intra) | | 1/40. ab172730 - Rabbit monoclonal IgG, is suitable for use as an isotype control with this antibody. |
| WB | ★★★★★ (1) | 1/10000 - 1/50000. Detects a band of approximately 30 kDa (predicted molecular weight: 30 kDa). |
| IP | | 1/40 - 1/60. |
| ICC/IF | ★★★★★ (1) | 1/100. |

ターゲット情報

| | |
|-------|--|
| 機能 | Responsible for the provision of inositol required for synthesis of phosphatidylinositol and polyphosphoinositides and has been implicated as the pharmacological target for lithium action in brain. Can use myo-inositol monophosphates, myo-inositol-1,3-diphosphate, myo-inositol-1,4-diphosphate, scyllo-inositol-phosphate, glucose-1-phosphate, glucose-6-phosphate, fructose-1-phosphate, beta-glycerophosphate, and 2'-AMP as substrates. |
| パスウェイ | Polyol metabolism; myo-inositol biosynthesis; myo-inositol from D-glucose 6-phosphate: step 2/2. |
| 配列類似性 | Belongs to the inositol monophosphatase family. |
| 細胞内局在 | Cytoplasm. |

画像



All lanes : Anti-IMPA1 antibody [EPR15404(B)] (ab184165) at 1/50000 dilution

Lane 1 : Human testis tissue lysate

Lane 2 : Jurkat cell lysate

Lane 3 : PC 3 cell lysate

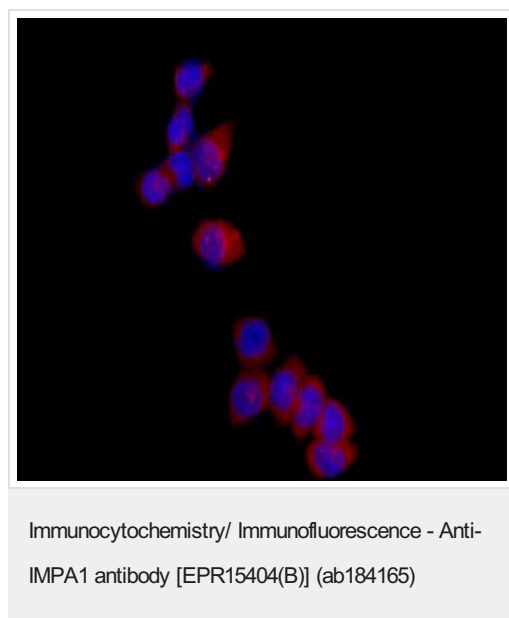
Lane 4 : HCT116 cell lysate

Lysates/proteins at 20 µg per lane.

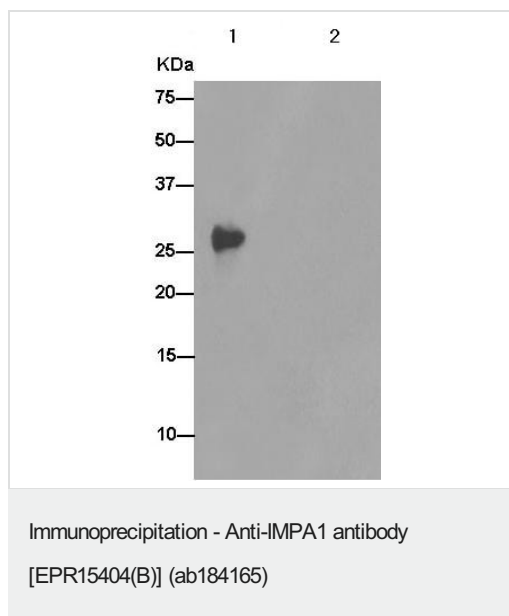
Secondary

All lanes : Goat Anti-Rabbit IgG, (H+L), Peroxidase conjugated at 1/1000 dilution

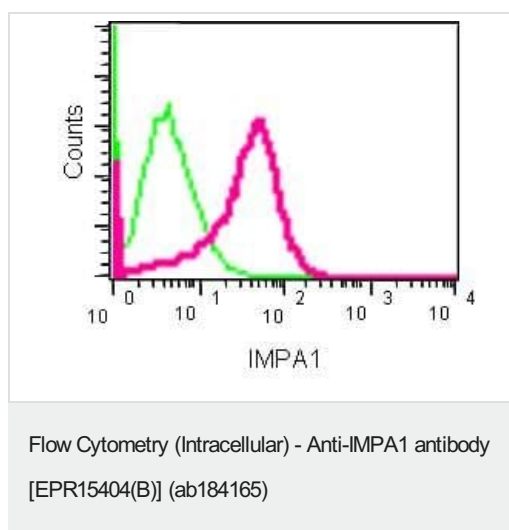
Predicted band size: 30 kDa



Immunofluorescent analysis of HCT116 cells (4% paraformaldehyde-fixed) labeling IMPA1 with ab184165 at 1/100 dilution followed by Goat anti rabbit IgG (Alexa Fluor® 555) secondary at 1/200 dilution and counter-stained with DAPI (blue).



Western blot analysis of immunoprecipitation pellet from Human testis tissue lysate (lane 1) or a PBS control (lane 2) immunoprecipitated using ab184165 at 1/50 dilution. Secondary: Anti-Rabbit IgG (HRP), specific to the non-reduced form of IgG at 1/1500 dilution.



Intracellular flow cytometric analysis of PC3 cells (2% paraformaldehyde-fixed) labeling IMPA1 with ab184165 at 1/40 dilution (red) or a rabbit IgG (negative) (green), followed by Goat anti rabbit IgG (FITC) secondary at 1/150 dilution.

Why choose a recombinant antibody?

| | |
|--|--|
| <p>Research with confidence Consistent and reproducible results</p> | <p>Long-term and scalable supply Recombinant technology</p> |
| <p>Success from the first experiment Confirmed specificity</p> | <p>Ethical standards compliant Animal-free production</p> |

Anti-IMPA1 antibody [EPR15404(B)] (ab184165)

Please note: All products are "FOR RESEARCH USE ONLY. NOT FOR USE IN DIAGNOSTIC PROCEDURES"

Our Abpromise to you: Quality guaranteed and expert technical support

- Replacement or refund for products not performing as stated on the datasheet
- Valid for 12 months from date of delivery
- Response to your inquiry within 24 hours

- We provide support in Chinese, English, French, German, Japanese and Spanish
- Extensive multi-media technical resources to help you
- We investigate all quality concerns to ensure our products perform to the highest standards

If the product does not perform as described on this datasheet, we will offer a refund or replacement. For full details of the Abpromise, please visit <https://www.abcam.co.jp/abpromise> or contact our technical team.

Terms and conditions

- Guarantee only valid for products bought direct from Abcam or one of our authorized distributors