


Anti-ILF2/NF45 antibody [EPR10695(B)] ab154791

リコンビナント RabMAb[®]

★★★★☆ **1 Abreviews** **4 References** **画像数 9**

製品の概要

製品名	Anti-ILF2/NF45 antibody [EPR10695(B)]
製品の詳細	Rabbit monoclonal [EPR10695(B)] to ILF2/NF45
由来種	Rabbit
アプリケーション	適用あり: Flow Cyt (Intra), WB, IHC-P 適用なし: ICC/IF
種交差性	交差種: Human 交差が予測される動物種: Mouse, Rat 
免疫原	Synthetic peptide corresponding to Human ILF2/NF45. Database link: Q12905
ポジティブ・コントロール	K562, Raji, A431 and HeLa cell lysates; Human spleen tissue; Human thyroid gland carcinoma tissue.
特記事項	This product is a recombinant monoclonal antibody, which offers several advantages including: <ul style="list-style-type: none">- High batch-to-batch consistency and reproducibility- Improved sensitivity and specificity- Long-term security of supply- Animal-free production For more information see here . Our RabMAb [®] technology is a patented hybridoma-based technology for making rabbit monoclonal antibodies. For details on our patents, please refer to RabMAb[®] patents .

製品の特性

製品の状態	Liquid
保存方法	Shipped at 4°C. Store at -20°C.
バッファー	pH: 7.2 Preservative: 0.01% Sodium azide Constituents: 9% PBS, 40% Glycerol (glycerin, glycerine), 0.05% BSA, 50% Tissue culture supernatant
精製度	Tissue culture supernatant
ポリ/モノ	モノクローナル

クローン名 EPR10695(B)
アイソタイプ IgG

アプリケーション

The Abpromise guarantee **Abpromise保証は、次のテスト済みアプリケーションにおけるab154791の使用に適用されず**
アプリケーションノートには、推奨の開始希釈率がありますが、適切な希釈率につきましてはご検討ください。

アプリケーション	Abreviews	特記事項
Flow Cyt (Intra)		1/100 - 1/1000. ab172730 - Rabbit monoclonal IgG, is suitable for use as an isotype control with this antibody.
WB	★★★★☆ (1)	1/1000 - 1/10000. Predicted molecular weight: 43 kDa.
IHC-P		1/50 - 1/100. Perform heat mediated antigen retrieval with citrate buffer pH 6 before commencing with IHC staining protocol.

追加情報 Is unsuitable for ICC/IF.

ターゲット情報

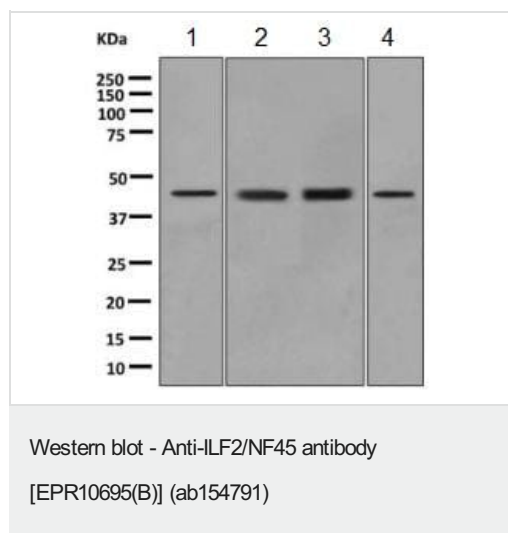
機能 Appears to function predominantly as a heterodimeric complex with ILF3. This complex may regulate transcription of the IL2 gene during T-cell activation. It can also promote the formation of stable DNA-dependent protein kinase holoenzyme complexes on DNA.

配列類似性 Contains 1 DZF domain.

翻訳後修飾 Phosphorylated upon DNA damage, probably by ATM or ATR.

細胞内局在 Nucleus > nucleolus. Cytoplasm. Localized in cytoplasmic mRNP granules containing untranslated mRNAs.

画像



All lanes : Anti-ILF2/NF45 antibody [EPR10695(B)] (ab154791) at 1/1000 dilution

Lane 1 : K562 cell lysate

Lane 2 : Raji cell lysate

Lane 3 : A431 cell lysate

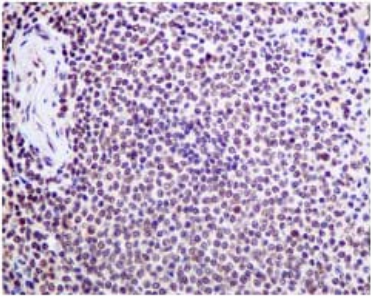
Lane 4 : HeLa cell lysate

Lysates/proteins at 10 µg per lane.

Secondary

All lanes : Goat anti-rabbit HRP at 1/2000 dilution

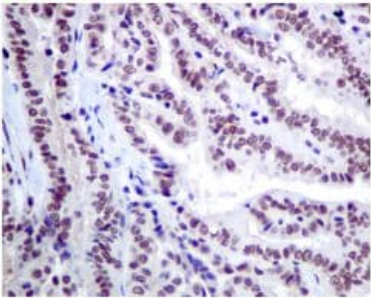
Predicted band size: 43 kDa



Immunohistochemistry (Formalin/PFA-fixed paraffin-embedded sections) - Anti-ILF2/NF45 antibody [EPR10695(B)] (ab154791)

Immunohistochemical analysis of paraffin-embedded Human spleen tissue labeling ILF2/NF45 with ab154791 at 1/50 dilution.

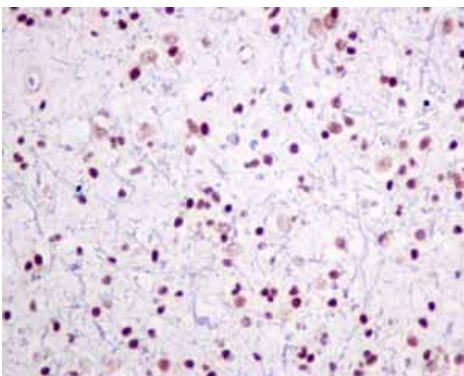
Perform heat mediated antigen retrieval with citrate buffer pH 6 before commencing with IHC staining protocol.



Immunohistochemistry (Formalin/PFA-fixed paraffin-embedded sections) - Anti-ILF2/NF45 antibody [EPR10695(B)] (ab154791)

Immunohistochemical analysis of paraffin-embedded Human thyroid gland carcinoma tissue labeling ILF2/NF45 with ab154791 at 1/50 dilution.

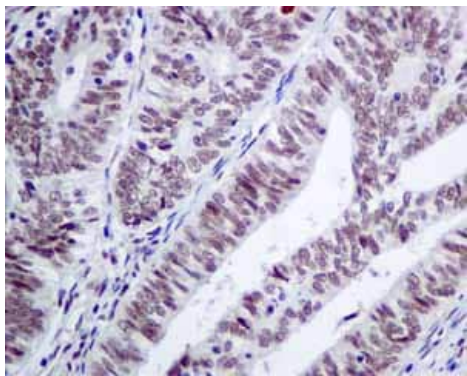
Perform heat mediated antigen retrieval with citrate buffer pH 6 before commencing with IHC staining protocol.



Immunohistochemistry (Formalin/PFA-fixed paraffin-embedded sections) - Anti-ILF2/NF45 antibody [EPR10695(B)] (ab154791)

Immunohistochemical analysis of paraffin embedded Human glioma tissue using ab154791 showing +ve staining.

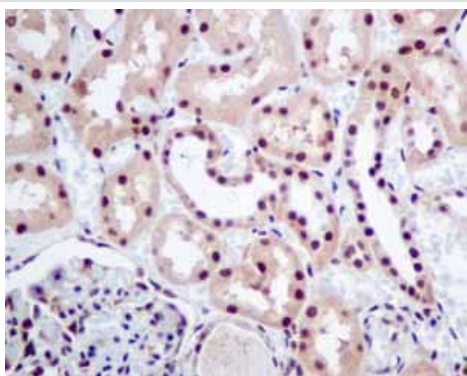
Perform heat mediated antigen retrieval with citrate buffer pH 6 before commencing with IHC staining protocol.



Immunohistochemistry (Formalin/PFA-fixed paraffin-embedded sections) - Anti-ILF2/NF45 antibody [EPR10695(B)] (ab154791)

Immunohistochemical analysis of paraffin embedded Human endometrial carcinoma tissue using ab154791 showing +ve staining.

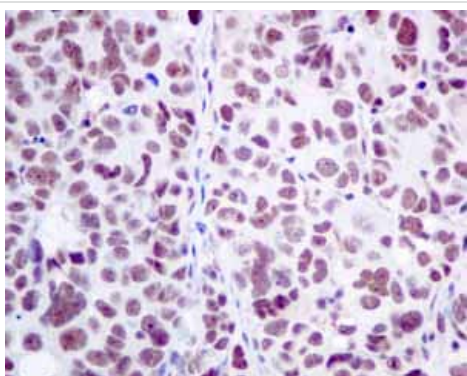
Perform heat mediated antigen retrieval with citrate buffer pH 6 before commencing with IHC staining protocol.



Immunohistochemistry (Formalin/PFA-fixed paraffin-embedded sections) - Anti-ILF2/NF45 antibody [EPR10695(B)] (ab154791)

Immunohistochemical analysis of paraffin embedded Human normal kidney tissue using ab154791 showing +ve staining.

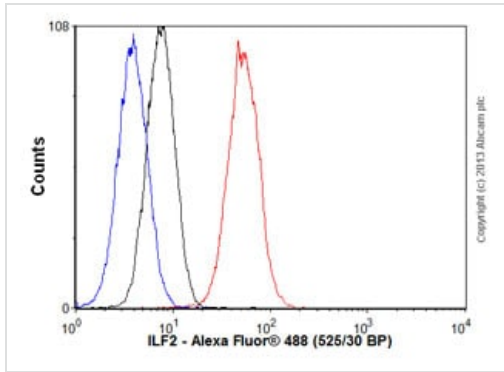
Perform heat mediated antigen retrieval with citrate buffer pH 6 before commencing with IHC staining protocol.



Immunohistochemistry (Formalin/PFA-fixed paraffin-embedded sections) - Anti-ILF2/NF45 antibody [EPR10695(B)] (ab154791)

Immunohistochemical analysis of paraffin embedded Human ovarian carcinoma tissue using ab154791 showing +ve staining.


Perform heat mediated antigen retrieval with citrate buffer pH 6 before commencing with IHC staining protocol.



Flow Cytometry (Intracellular) - Anti-ILF2/NF45 antibody [EPR10695(B)] (ab154791)

Overlay histogram showing HeLa cells stained with ab154791 (red line). The cells were fixed with 80% methanol (5 min) and then permeabilized with 0.1% PBS-Tween for 20 min. The cells were then incubated in 1x PBS / 10% normal goat serum / 0.3M glycine to block non-specific protein-protein interactions followed by the antibody (ab154791, 1/1000 dilution) for 30 min at 22°C. The secondary antibody used was Alexa Fluor® 488 goat anti-rabbit IgG (H&L) (**ab150077**) at 1/2000 dilution for 30 min at 22°C. Isotype control antibody (black line) was rabbit IgG (monoclonal) (0.1µg/1x10⁶ cells) used under the same conditions. Unlabelled sample (blue line) was also used as a control. Acquisition of >5,000 events were collected using a 20mW Argon ion laser (488nm) and 525/30 bandpass filter.

Why choose a recombinant antibody?

 <p>Research with confidence Consistent and reproducible results</p>	 <p>Long-term and scalable supply Recombinant technology</p>
 <p>Success from the first experiment Confirmed specificity</p>	 <p>Ethical standards compliant Animal-free production</p>

Anti-ILF2/NF45 antibody [EPR10695(B)] (ab154791)

Please note: All products are "FOR RESEARCH USE ONLY. NOT FOR USE IN DIAGNOSTIC PROCEDURES"

Our Abpromise to you: Quality guaranteed and expert technical support

- Replacement or refund for products not performing as stated on the datasheet
- Valid for 12 months from date of delivery
- Response to your inquiry within 24 hours
- We provide support in Chinese, English, French, German, Japanese and Spanish
- Extensive multi-media technical resources to help you
- We investigate all quality concerns to ensure our products perform to the highest standards

If the product does not perform as described on this datasheet, we will offer a refund or replacement. For full details of the Abpromise, please visit <https://www.abcam.co.jp/abpromise> or contact our technical team.

Terms and conditions

- Guarantee only valid for products bought direct from Abcam or one of our authorized distributors