

Anti-IL-6R antibody ab128008

★★★★★ [3 Abreviews](#) [27 References](#) [画像数 2](#)

製品の概要

製品名	Anti-IL-6R antibody
製品の詳細	Rabbit polyclonal to IL-6R
由来種	Rabbit
アプリケーション	適用あり: WB, IHC-P
種交差性	交差種: Human
免疫原	Synthetic peptide corresponding to Human IL-6R aa 253-267. Database link: P08887
特記事項	<p>The Life Science industry has been in the grips of a reproducibility crisis for a number of years. Abcam is leading the way in addressing this with our range of recombinant monoclonal antibodies and knockout edited cell lines for gold-standard validation. Please check that this product meets your needs before purchasing.</p> <p>If you have any questions, special requirements or concerns, please send us an inquiry and/or contact our Support team ahead of purchase. Recommended alternatives for this product can be found below, along with publications, customer reviews and Q&As</p>

製品の特性

製品の状態	Liquid
保存方法	Shipped at 4°C. Store at +4°C short term (1-2 weeks). Upon delivery aliquot. Store at -20°C long term.
バッファー	Preservative: 0.02% Sodium azide Constituents: PBS, 50% Glycerol (glycerin, glycerine), 0.88% Sodium chloride (without Mg ²⁺ , Ca ²⁺)
精製度	Affinity purified
ポリ/モノ	ポリクローナル
アイソタイプ	IgG

アプリケーション

The Abpromise guarantee

Abpromise保証は、次のテスト済みアプリケーションにおけるab128008の使用に適用されます

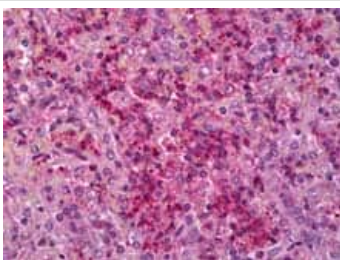
アプリケーションノートには、推奨の開始希釈率がありますが、適切な希釈率につきましてはご検討ください。

アプリケーション	Abreviews	特記事項
WB		1/200 - 1/500. Predicted molecular weight: 52 kDa.
IHC-P	★★★★★ (2)	Use a concentration of 2.5 µg/ml. Perform heat mediated antigen retrieval with citrate buffer pH 6 before commencing with IHC staining protocol.

ターゲット情報

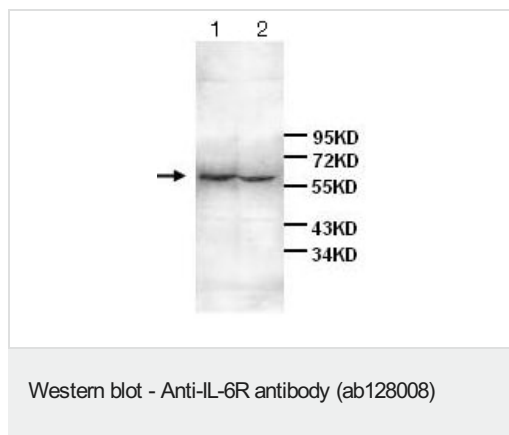
機能	Part of the receptor for interleukin 6. Binds to IL6 with low affinity, but does not transduce a signal. Signal activation necessitate an association with IL6ST. Activation may lead to the regulation of the immune response, acute-phase reactions and hematopoiesis. Low concentration of a soluble form of IL6 receptor acts as an agonist of IL6 activity.
組織特異性	Isoform 2 is expressed in peripheral blood mononuclear cells and weakly found in urine and serum.
配列類似性	Belongs to the type I cytokine receptor family. Type 3 subfamily. Contains 1 fibronectin type-III domain. Contains 1 Ig-like C2-type (immunoglobulin-like) domain.
ドメイン	The two fibronectin type-III-like domains, contained in the N-terminal part, form together a cytokine-binding domain. The WSXWS motif appears to be necessary for proper protein folding and thereby efficient intracellular transport and cell-surface receptor binding.
翻訳後修飾	A short soluble form may also be released from the membrane by proteolysis.
細胞内局在	Secreted and Basolateral cell membrane.

画像



Paraffin-embedded human spleen tissue stained for IL6R with ab128008 at 2.5 µg/ml in immunohistochemical analysis.

Immunohistochemistry (Formalin/PFA-fixed paraffin-embedded sections) - Anti-IL-6R antibody (ab128008)



All lanes : Anti-IL-6R antibody (ab128008) at 1/200 dilution

Lane 1 : Jurkat (human T cell leukemia cell line from peripheral blood) cell lysate

Lane 2 : 803 cell lysate

Predicted band size: 52 kDa

Please note: All products are "FOR RESEARCH USE ONLY. NOT FOR USE IN DIAGNOSTIC PROCEDURES"

Our Abpromise to you: Quality guaranteed and expert technical support

- Replacement or refund for products not performing as stated on the datasheet
- Valid for 12 months from date of delivery
- Response to your inquiry within 24 hours
- We provide support in Chinese, English, French, German, Japanese and Spanish
- Extensive multi-media technical resources to help you
- We investigate all quality concerns to ensure our products perform to the highest standards

If the product does not perform as described on this datasheet, we will offer a refund or replacement. For full details of the Abpromise, please visit <https://www.abcam.co.jp/abpromise> or contact our technical team.

Terms and conditions

- Guarantee only valid for products bought direct from Abcam or one of our authorized distributors