


### Anti-IL-13 receptor alpha 1 antibody ab108499

★★★★★ 1 Abreviews 2 References 両俵数?

医薬用外毒物

#### 製品の概要

製品名	Anti-IL-13 receptor alpha 1 antibody
製品の詳細	Rabbit polyclonal to IL-13 receptor alpha 1
由来種	Rabbit
アプリケーション	<b>適用あり:</b> WB, IHC-P
種交差性	<b>交差種:</b> Human <b>交差が予測される動物種:</b> Mouse, Rat 
免疫原	Recombinant fragment corresponding to Human IL-13 receptor alpha 1 aa 70-304. Database link: <a href="#">BC015768</a>
ポジティブ・コントロール	A549 cell lysate. Human fetal heart tissue.
特記事項	<p>The Life Science industry has been in the grips of a reproducibility crisis for a number of years. Abcam is leading the way in addressing this with our range of recombinant monoclonal antibodies and knockout edited cell lines for gold-standard validation. Please check that this product meets your needs before purchasing.</p> <p>If you have any questions, special requirements or concerns, please send us an inquiry and/or contact our Support team ahead of purchase. Recommended alternatives for this product can be found below, along with publications, customer reviews and Q&amp;As</p>

#### 製品の特性

製品の状態	Lyophilized:Reconstitute in 200ul sterile H2O.
保存方法	Shipped at 4°C. Upon delivery aliquot and store at -20°C. Avoid freeze / thaw cycles.
バッファー	Preservative: 0.02% Sodium azide Constituent: 1% BSA
精製度	Immunogen affinity purified
ポリ/モノ	ポリクローナル
アイソタイプ	IgG

#### アプリケーション

## The Abpromise guarantee

**Abpromise保証は、次のテスト済みアプリケーションにおけるab108499の使用に適用されます**

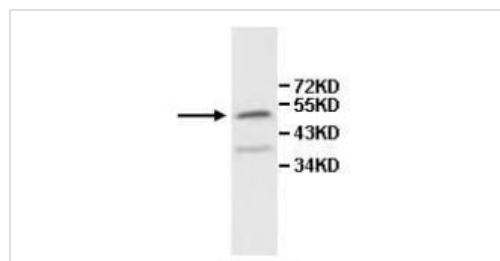
アプリケーションノートには、推奨の開始希釈率がありますが、適切な希釈率につきましてはご確認ください。

アプリケーション	Abreviews	特記事項
WB	★★★★☆ (1)	1/500 - 1/1000. Predicted molecular weight: 49 kDa.
IHC-P		1/100 - 1/500.

## ターゲット情報

機能	Binds with low affinity to interleukin-13 (IL13). Together with IL4RA can form a functional receptor for IL13. Also serves as an alternate accessory protein to the common cytokine receptor gamma chain for interleukin-4 (IL4) signaling, but cannot replace the function of IL2RG in allowing enhanced interleukin-2 (IL2) binding activity.
組織特異性	Ubiquitous. Highest levels in heart, liver, skeletal muscle and ovary; lowest levels in brain, lung and kidney. Also found in B-cells, T-cells and endothelial cells.
配列類似性	Belongs to the type I cytokine receptor family. Type 5 subfamily.
ドメイン	The WSXWS motif appears to be necessary for proper protein folding and thereby efficient intracellular transport and cell-surface receptor binding. The box 1 motif is required for JAK interaction and/or activation.
細胞内局在	Membrane.

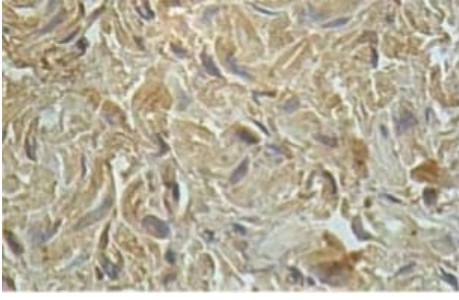
## 画像



Anti-IL-13 receptor alpha 1 antibody (ab108499) at 1/500 dilution + A549 cell lysate

**Predicted band size: 49 kDa**

Western blot - Anti-IL-13 receptor alpha 1 antibody (ab108499)



1/100 ab108499 staining IL13 receptor alpha 1 in formalin-fixed, paraffin-embedded Human fetal heart tissue.

Immunohistochemistry (Formalin/PFA-fixed paraffin-embedded sections) - Anti-IL-13 receptor alpha 1 antibody (ab108499)

**Please note:** All products are "FOR RESEARCH USE ONLY. NOT FOR USE IN DIAGNOSTIC PROCEDURES"

### Our Abpromise to you: Quality guaranteed and expert technical support

---

- Replacement or refund for products not performing as stated on the datasheet
- Valid for 12 months from date of delivery
- Response to your inquiry within 24 hours
- We provide support in Chinese, English, French, German, Japanese and Spanish
- Extensive multi-media technical resources to help you
- We investigate all quality concerns to ensure our products perform to the highest standards

If the product does not perform as described on this datasheet, we will offer a refund or replacement. For full details of the Abpromise, please visit <https://www.abcam.co.jp/abpromise> or contact our technical team.

### Terms and conditions

---

- Guarantee only valid for products bought direct from Abcam or one of our authorized distributors