

Anti-IL-12RB2 antibody ab96097

1 References 画像数 1

医薬用外劇物

製品の概要

製品名	Anti-IL-12RB2 antibody
製品の詳細	Rabbit polyclonal to IL-12RB2
由来種	Rabbit
アプリケーション	適用あり: WB
種交差性	交差種: Human
免疫原	Recombinant fragment corresponding to Human IL-12RB2 aa 323-665.
ポジティブ・コントロール	293T, H1299, HeLaS3, Molt 4, Raji; A431 or HepG2 whole cell lysate (ab7900)
特記事項	<p>The Life Science industry has been in the grips of a reproducibility crisis for a number of years. Abcam is leading the way in addressing this with our range of recombinant monoclonal antibodies and knockout edited cell lines for gold-standard validation. Please check that this product meets your needs before purchasing.</p> <p>If you have any questions, special requirements or concerns, please send us an inquiry and/or contact our Support team ahead of purchase. Recommended alternatives for this product can be found below, along with publications, customer reviews and Q&As</p>

製品の特性

製品の状態	Liquid
保存方法	Shipped at 4°C. Upon delivery aliquot and store at -20°C or -80°C. Avoid repeated freeze / thaw cycles.
バッファー	pH: 7.00 Preservative: 0.01% Thimerosal (merthiolate) Constituents: 1.21% Tris, 0.75% Glycine, 10% Glycerol (glycerin, glycerine)
精製度	Immunogen affinity purified
ポリ/モノ	ポリクローナル
アイソタイプ	IgG

アプリケーション

The Abpromise guarantee

Abpromise保証は、次のテスト済みアプリケーションにおけるab96097の使用に適用されます

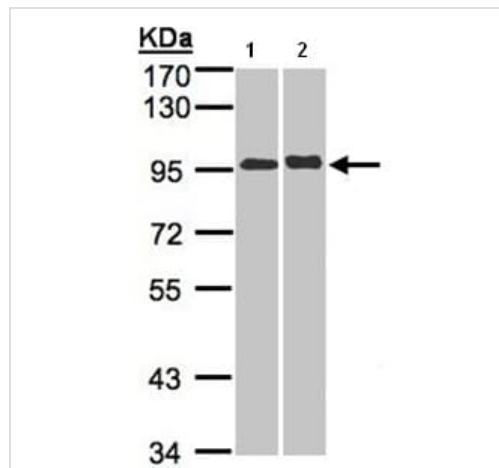
アプリケーションノートには、推奨の開始希釈率がありますが、適切な希釈率につきましてはご確認ください。

アプリケーション	Abreviews	特記事項
WB		1/500 - 1/3000. Predicted molecular weight: 97 kDa.

ターゲット情報

機能	Receptor for interleukin-12. This subunit is the signaling component coupling to the JAK2/STAT4 pathway. Promotes the proliferation of T-cells as well as NK cells. Induces the promotion of T-cells towards the Th1 phenotype by strongly enhancing IFN-gamma production.
組織特異性	Isoform 2 is expressed at similar levels in both naive and activated T-cells.
配列類似性	Belongs to the type I cytokine receptor family. Type 2 subfamily. Contains 5 fibronectin type-III domains.
発生段階	Maximum levels in Th1 cells between day 3 and day 8 of activation.
ドメイン	The WSXWS motif appears to be necessary for proper protein folding and thereby efficient intracellular transport and cell-surface receptor binding. The box 1 motif is required for JAK interaction and/or activation.
翻訳後修飾	On IL12 binding, phosphorylated on C-terminal tyrosine residues by JAK2. Phosphorylation on Tyr-800 is required for STAT4 binding and activation, and for SOCS3 binding.
細胞内局在	Membrane.

画像



Western blot - Anti-IL-12RB2 antibody (ab96097)

All lanes : Anti-IL-12RB2 antibody (ab96097) at 1/5000 dilution

Lane 1 : A431 whole cell lysate

Lane 2 : HepG2 whole cell lysate

Lysates/proteins at 30 µg per lane.

Predicted band size: 97 kDa

7.5% SDS PAGE

Please note: All products are "FOR RESEARCH USE ONLY. NOT FOR USE IN DIAGNOSTIC PROCEDURES"

Our Abpromise to you: Quality guaranteed and expert technical support

- Replacement or refund for products not performing as stated on the datasheet

- Valid for 12 months from date of delivery
- Response to your inquiry within 24 hours
- We provide support in Chinese, English, French, German, Japanese and Spanish
- Extensive multi-media technical resources to help you
- We investigate all quality concerns to ensure our products perform to the highest standards

If the product does not perform as described on this datasheet, we will offer a refund or replacement. For full details of the Abpromise, please visit <https://www.abcam.co.jp/abpromise> or contact our technical team.

Terms and conditions

- Guarantee only valid for products bought direct from Abcam or one of our authorized distributors