

# Anti-IL-10RB/IL-10R2 antibody [MM0360-8R24] ab89884

**1 References** [画像数 2](#)

### 製品の概要

製品名	Anti-IL-10RB/IL-10R2 antibody [MM0360-8R24]
製品の詳細	Mouse monoclonal [MM0360-8R24] to IL-10RB/IL-10R2
由来種	Mouse
アプリケーション	<b>適用あり:</b> WB, Flow Cyt
種交差性	<b>交差種:</b> Human
免疫原	Recombinant fragment corresponding to Human IL-10RB/IL-10R2.
特記事項	<p>The Life Science industry has been in the grips of a reproducibility crisis for a number of years. Abcam is leading the way in addressing this with our range of recombinant monoclonal antibodies and knockout edited cell lines for gold-standard validation. Please check that this product meets your needs before purchasing.</p> <p>If you have any questions, special requirements or concerns, please send us an inquiry and/or contact our Support team ahead of purchase. Recommended alternatives for this product can be found below, along with publications, customer reviews and Q&amp;As</p>

### 製品の特性

製品の状態	Liquid
保存方法	Shipped at 4°C. Upon delivery aliquot and store at -20°C or -80°C. Avoid repeated freeze / thaw cycles.
バッファー	Constituent: PBS
精製度	Protein G purified
特記事項 (精製)	The IgG fraction of culture supernatant was purified by Protein G affinity chromatography and 0.2 µm filtered.
ポリ/モノ	モノクローナル
クローン名	MM0360-8R24
アイソタイプ	IgG1

### アプリケーション

The Abpromise guarantee

Abpromise保証は、次のテスト済みアプリケーションにおけるab89884の使用に適用されます

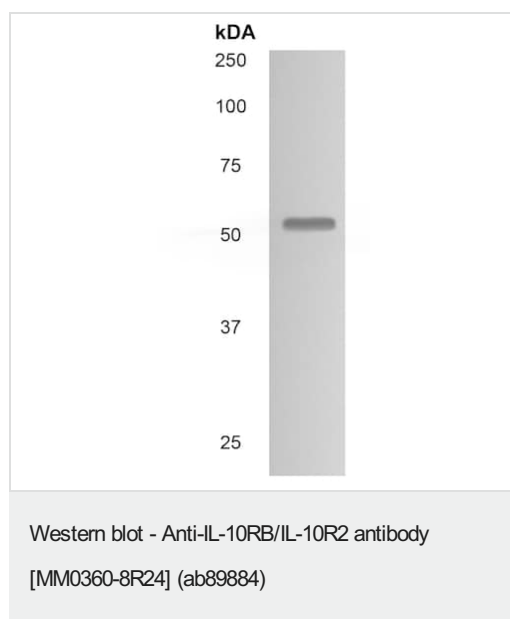
アプリケーションノートには、推奨の開始希釈率がありますが、適切な希釈率につきましてはご確認ください。

アプリケーション	Abreviews	特記事項
WB		1/500 - 1/2000. Detects a band of approximately 51 kDa (predicted molecular weight: 36 kDa).
Flow Cyt		Use 1µg for 10 <sup>6</sup> cells. <b>ab170190</b> - Mouse monoclonal IgG1, is suitable for use as an isotype control with this antibody.

## ターゲット情報

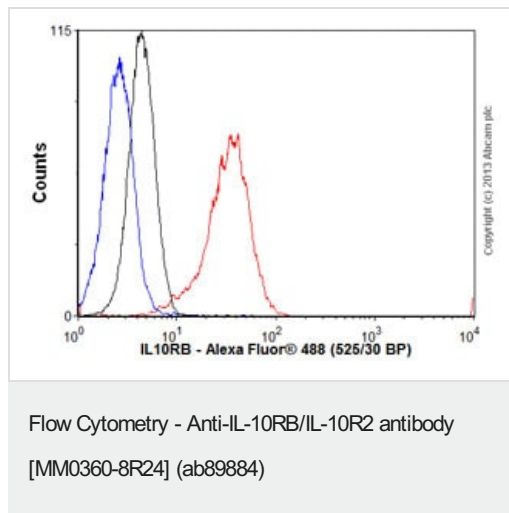
機能	Shared cell surface receptor required for the activation of five class 2 cytokines: IL10, IL22, IL26, IL28, and IL29.
関連疾患	Defects in IL10RB are the cause of inflammatory bowel disease type 25 (IBD25) [MIM:612567]. It is a chronic, relapsing inflammation of the gastrointestinal tract with a complex etiology. It is subdivided into Crohn disease and ulcerative colitis phenotypes. Crohn disease may affect any part of the gastrointestinal tract from the mouth to the anus, but most frequently it involves the terminal ileum and colon. Bowel inflammation is transmural and discontinuous; it may contain granulomas or be associated with intestinal or perianal fistulas. In contrast, in ulcerative colitis, the inflammation is continuous and limited to rectal and colonic mucosal layers; fistulas and granulomas are not observed. Both diseases include extraintestinal inflammation of the skin, eyes, or joints.
配列類似性	Belongs to the type II cytokine receptor family. Contains 2 fibronectin type-III domains.
細胞内局在	Membrane.

## 画像



Anti-IL-10RB/IL-10R2 antibody [MM0360-8R24] (ab89884) +  
Human Placenta Tissue Lysate

**Predicted band size:** 36 kDa



Overlay histogram showing Jurkat cells stained with ab89884 (red line). The cells were fixed with 80% methanol (5 min) and incubated in 1x PBS / 10% normal goat serum / 0.3M glycine to block non-specific protein-protein interactions. The cells were then incubated with the antibody (ab89884, 1 µg/1x10<sup>6</sup> cells) for 30 min at 22°C. The secondary antibody used was Alexa Fluor® 488 goat anti-mouse IgG (H&L) (**ab150113**) at 1/2000 dilution for 30 min at 22°C. Isotype control antibody (black line) was mouse IgG1 [ICIGG1] (**ab91353**, 1 µg/1x10<sup>6</sup> cells) used under the same conditions. Unlabelled sample (blue line) was also used as a control. Acquisition of >5,000 events were collected using a 20mW Argon ion laser (488nm) and 525/30 bandpass filter. Please note that Abcam do not have any data for use of this antibody on non-fixed cells. We welcome any customer feedback.

**Please note:** All products are "FOR RESEARCH USE ONLY. NOT FOR USE IN DIAGNOSTIC PROCEDURES"

### Our Abpromise to you: Quality guaranteed and expert technical support

- Replacement or refund for products not performing as stated on the datasheet
- Valid for 12 months from date of delivery
- Response to your inquiry within 24 hours
- We provide support in Chinese, English, French, German, Japanese and Spanish
- Extensive multi-media technical resources to help you
- We investigate all quality concerns to ensure our products perform to the highest standards

If the product does not perform as described on this datasheet, we will offer a refund or replacement. For full details of the Abpromise, please visit <https://www.abcam.co.jp/abpromise> or contact our technical team.

### Terms and conditions

- Guarantee only valid for products bought direct from Abcam or one of our authorized distributors